

Service Manual

AUTOMOTIVE MULTI-MEDIA



MAZDA CN-TM5290A

7" Color LCD Unit [Center Panel Module System]

PART No. : F151 66 DV0

VEHICLE : Mazda RX-8

DESTINATION : Europe

PRODUCED AFTER : Jan.,2003

CY-KM5290A

Remote Control

PART No. : GK3A 66 9L0

Specifications*

General

Power Supply DC 12V (11V - 16V)
Test Voltage 14.4V
Negative Ground

Current Consumption Less than 2A

Dimensions** (WxHxD) 446 x 200 x 353 (mm)
Weight** 1kg

* Specifications and the design are subject to possible modification without notice due to improvements.

** Dimensions and Weight shown are approximate.

Display Unit

Liquid Crystal Panel 7" wide

Screen Dimensions
Wide : 155mm
Height : 87.6mm
Diagonal : 177.8mm

Display Method Transparent color filter format

Drive Method TFT active matrix format

Light Source Internal light

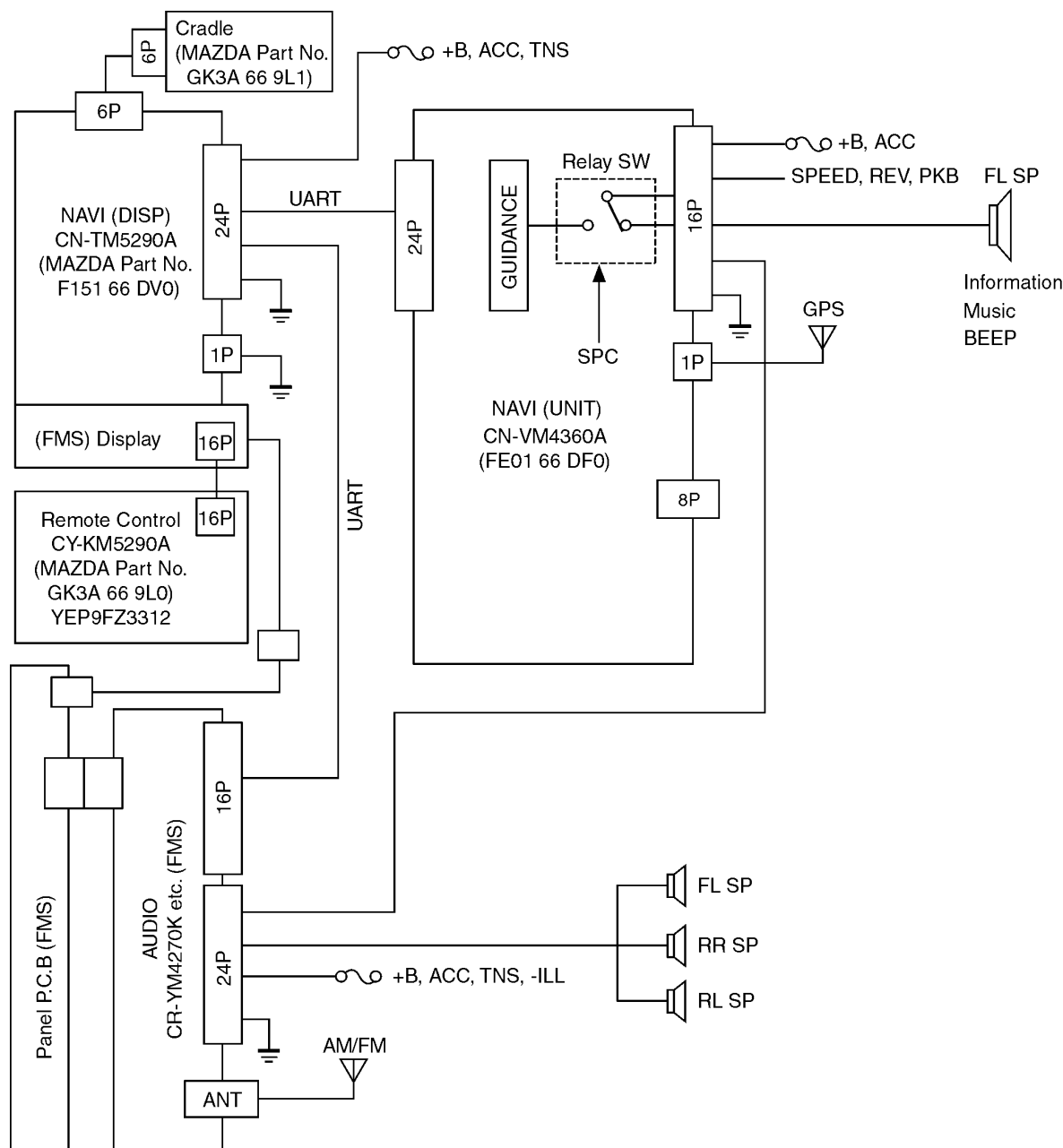
CONTENTS

	Page		Page
1 FEATUERS	2	7 IC BLOCK DIAGRAM	8
2 SYSTEM BLOCK DIAGRAM	2	8 REPLACEMENT PARTS LIST	11
3 NAME AND CONNECTOR	3	9 EXPLODED VIEW	16
4 WIRING CONNECTIONS	4	10 WIRING DIAGRAM	17
5 BLOCK DIAGRAM	5	11 SCHEMATIC DIAGRAM-1	21
6 TERMINALS DESCRIPTION	7	12 SCHEMATIC DIAGRAM-2	23

1 FEATUERS

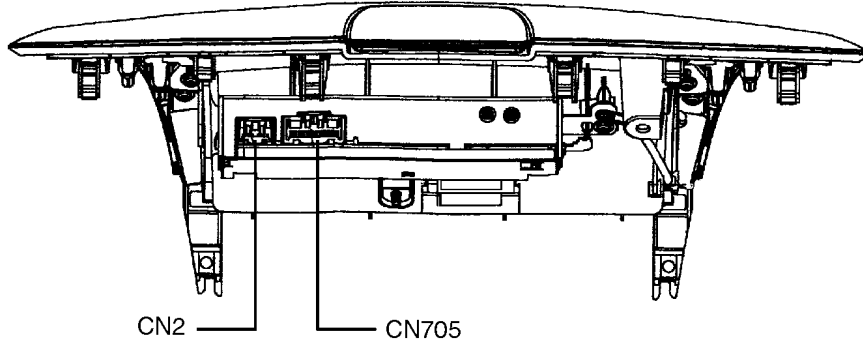
- 7 inch wide LCD monitor.
- TFT active matrix for accurate color reproduction.
- Open/Close function.
- 3 angles tilt function.
- Corresponding to infrared remote controller.
- Contrast adjustment function.

2 SYSTEM BLOCK DIAGRAM

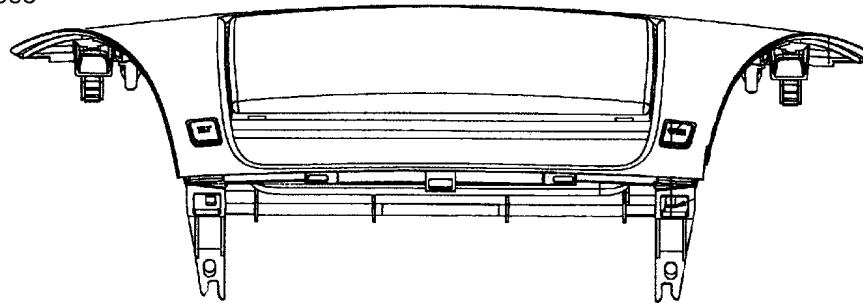


3 NAME AND CONNECTOR

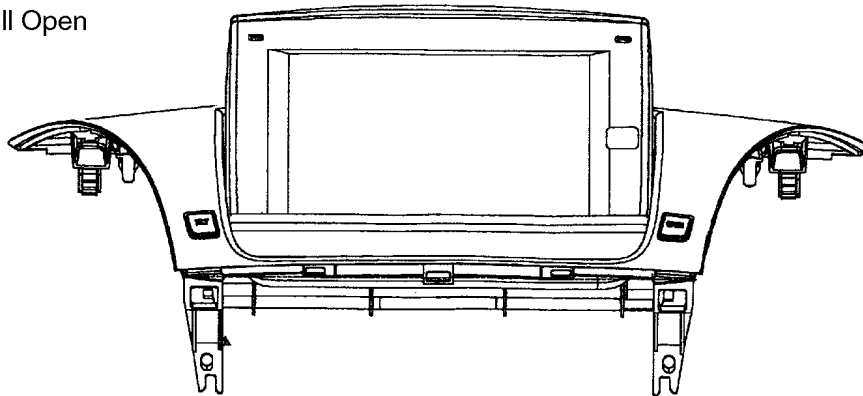
[Rear View]



[Top View] ■ Close



■ Full Open



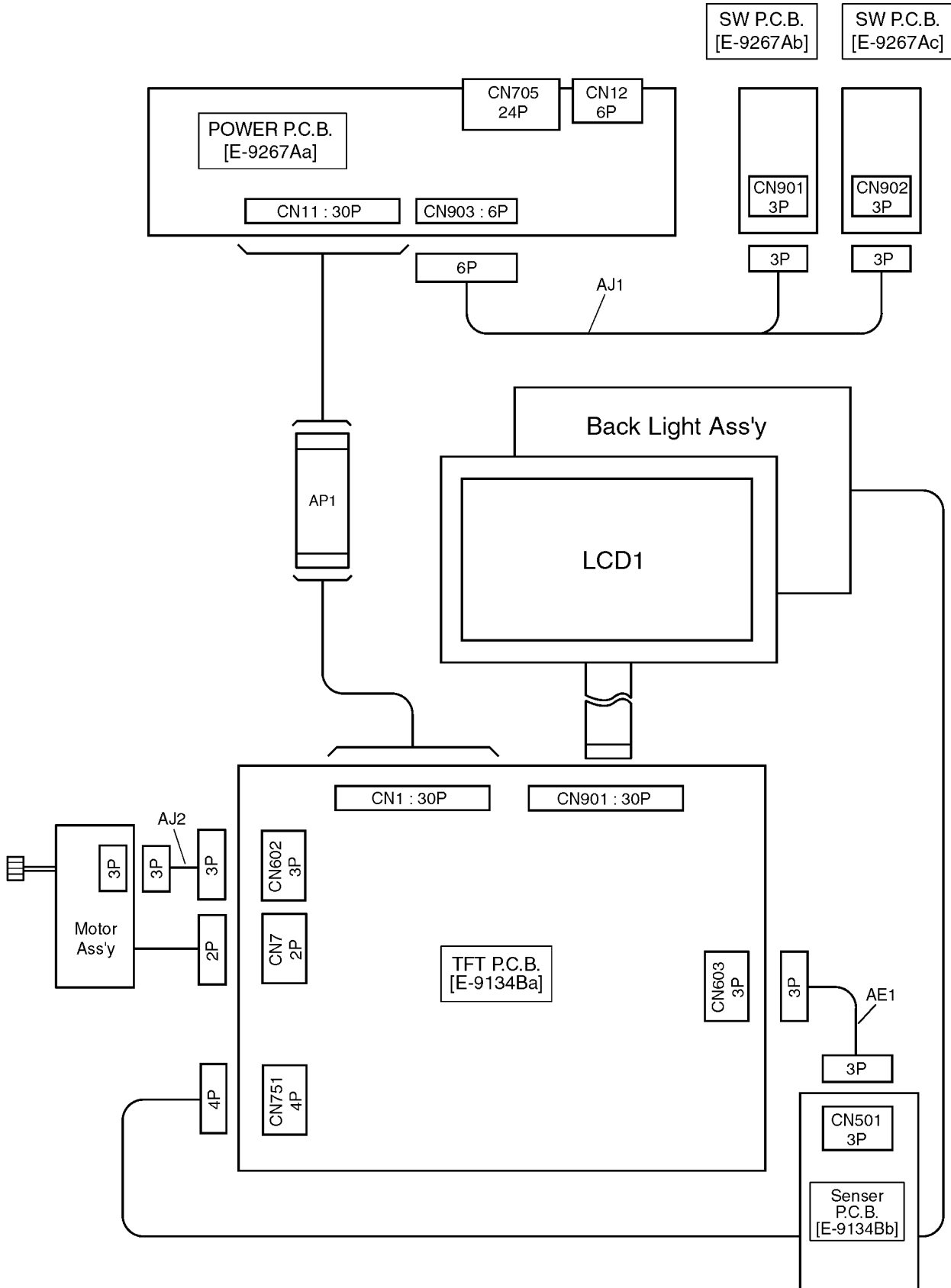
CN2 6P CONNECTOR

- a. ACC
- b. P.GND
- c. TNS⁺
- d. ILL⁻
- e. REM-DATA
- f. D.GND

CN705 24P CONNECTOR

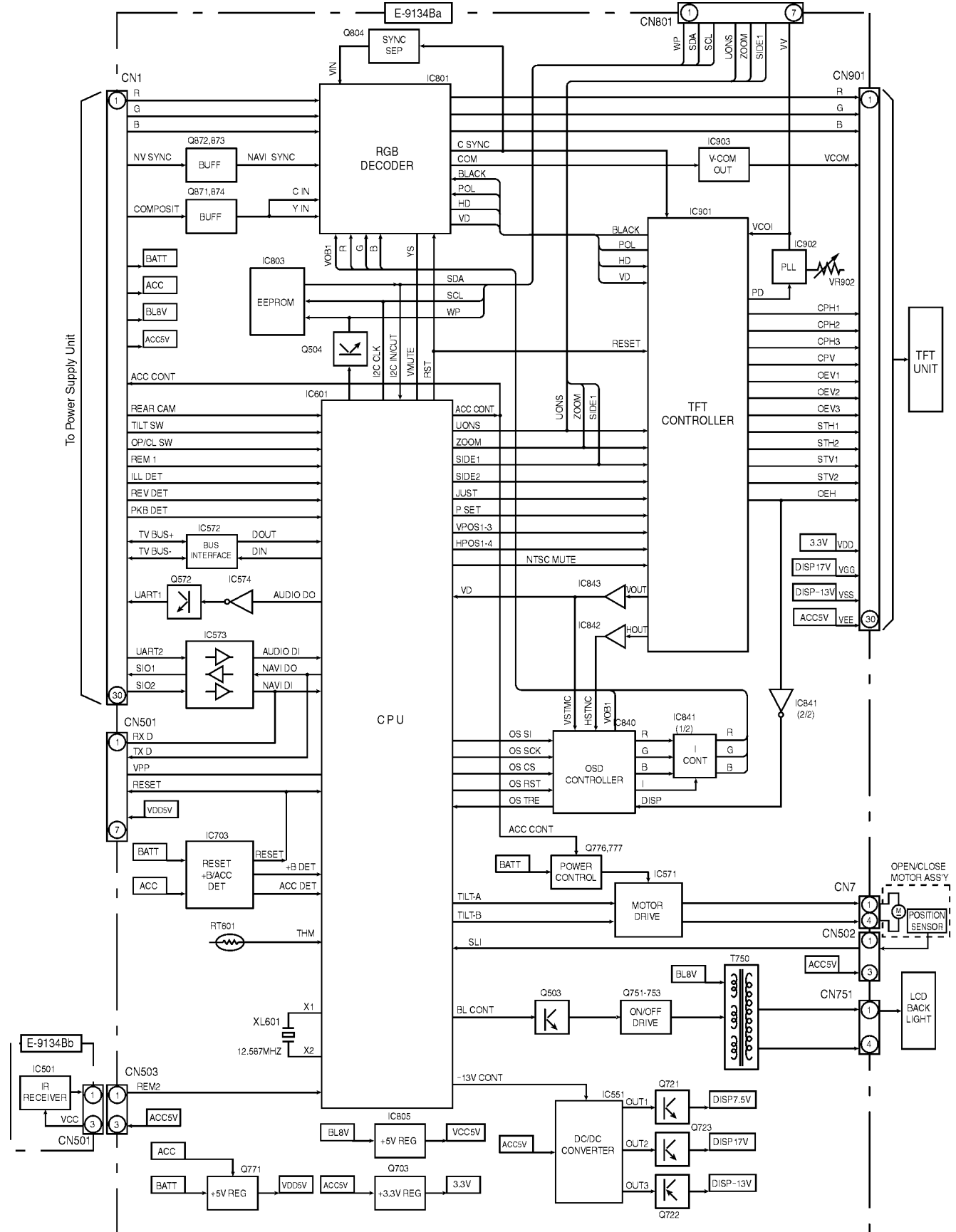
a. B SIG	m. REAR CAM
b. G SIG	n. TV BUS ⁺
c. NV.SYNC	o. ACC
d. R SIG	p. P.GND
e. V.GND	q. +B
f. CV.GND	r. PKB
g. D.GND	s. D.GND
h. COMPOSITE	t. REV
i. SI01	u. UART2
j. D.GND	v. TNS ⁺
k. SI02	w. UART1
l. TV BUS ⁻	x. ILL ⁻

4 WIRING CONNECTIONS



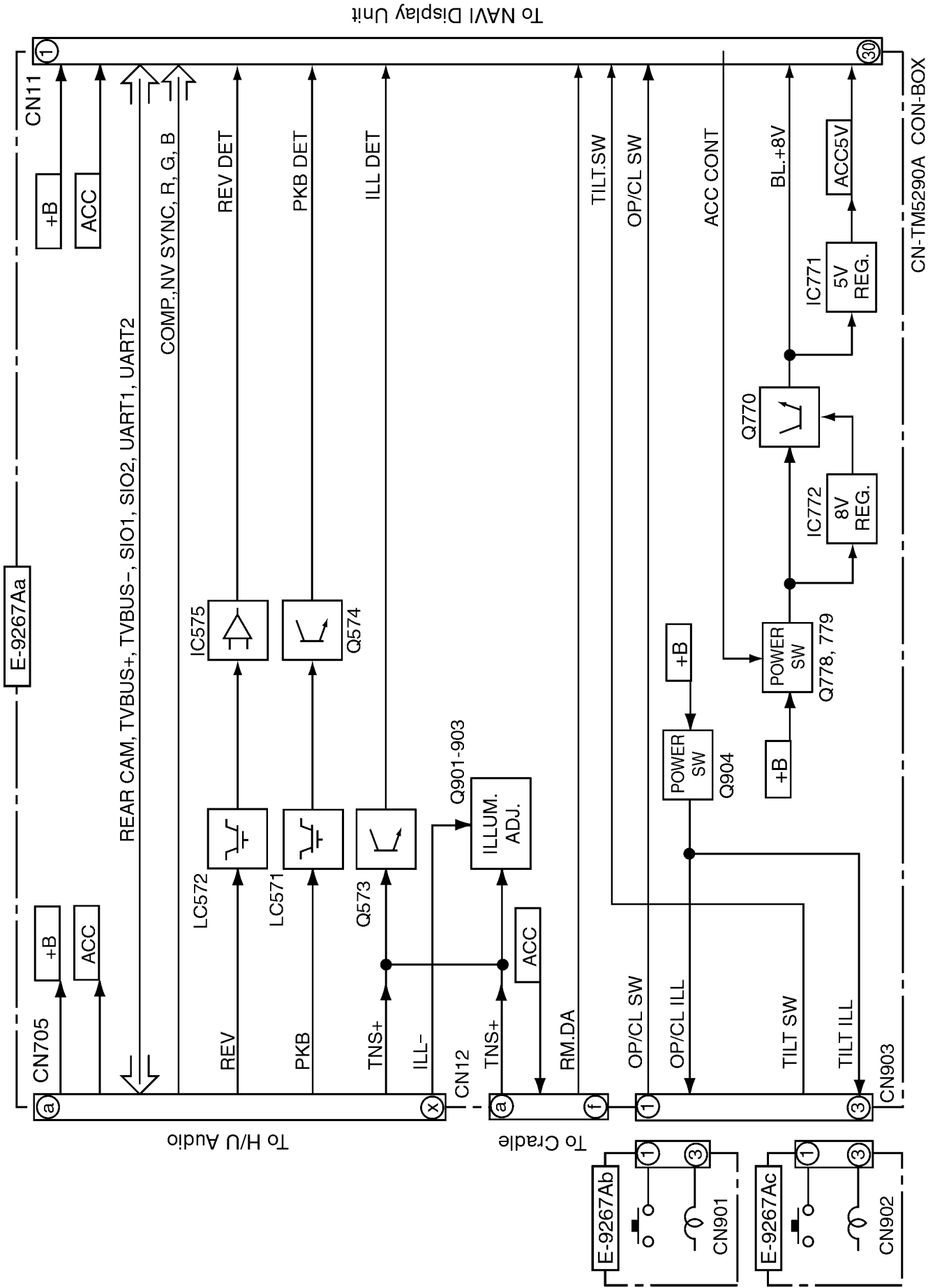
5 BLOCK DIAGRAM

5.1. Display Block



CN-TM5290A TFT

5.2. Connector/SW Block



6 TERMINALS DESCRIPTION

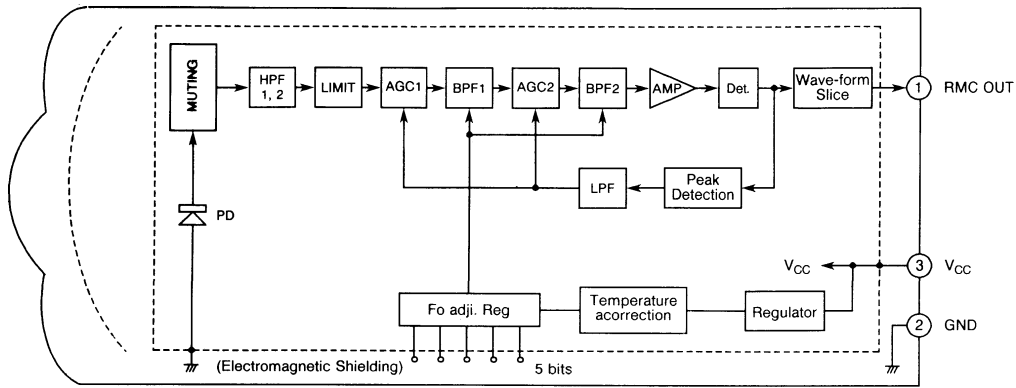
6.1. Main Block

IC601 C2CBJG000293

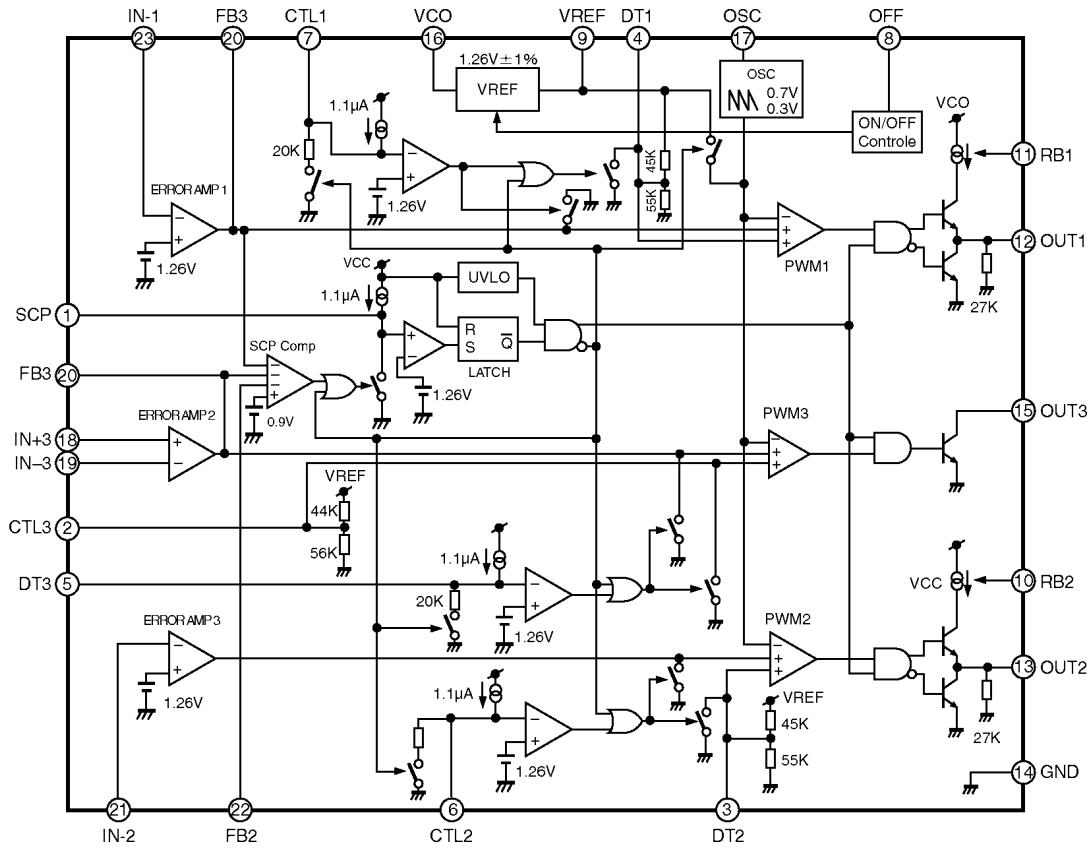
Pin No.	Port	Descriptions	I/O (V)	Vol (V)
1	BL-CONT	Back light brightness adjustment	O	3.3
2	ILL-CONT	Illumination control	O	0
3	TILT-A	Tilt motor control	O	0
4	TILT-B	Tilt motor control	O	0
5	OSDC-TRE	OSDC operating state flag	I	0.3
6	OSDC-RST	OSDC chip reset	O	5.1
7	OSDC-CS	OSDC chip select	O	3.9
8	OSDC-CLK	Shift clock for OSD control data	O	0.4
9	-	No connection	-	-
10	OSOC-SO	OSDC control data	O	1.6
11	RESET	System reset	I	5.1
12	XT2	Not used	-	-
13	XT1	Not used	-	-
14	GND	Ground	-	0
15	X2	Crystal oscillator terminal	-	1.9
16	X1	Crystal oscillator terminal	I	1.5
17	REGOFF	Not used	-	-
18	REGC	By-path capacitor terminal	-	3.7
19	VDD	+5V power supply	-	5.1
20	UDOS	Under-on-screen output control	O	0.2
21	TFT-RST	TFT controller reset	O	5.1
22	JUST	Screen size setting	O	0.2
23	SIDE1	Screen size setting	O	0.2
24	SIDE2	Screen size setting	O	0.2
25	ZOOM	Screen size setting	O	0.2
26	-	No connection	-	-
27	DISP-ON	Not used	-	-
28	-	No connection	-	-
29	NTSCMUTE	NTSC screen mute	O	5.1
30	-	-	-	-
31	ACC-CONT	ACC power control	O	5.1
32	-13V-CONT	LCD -13V power on/off	O	5.1
33	V-MUTE	Screen mute	O	0
34	DIAG	Diagnosis jig operation control	O	0
35	-	No connection	-	-
36	-	No connection	-	-
37	-	No connection	-	-
38	-	No connection	-	-
39	-	No connection	-	-
40	GND	Ground	-	0
41	VDD	+5V power supply	-	5.1
42	-	No connection	-	-
43	-	No connection	-	-
44	-	No connection	-	-
45	-	No connection	-	-
46	HPOS4	TFT horizontal display position setting	O	0
47	HPOS3	TFT horizontal display position setting	O	5.1
48	HPOS2	TFT horizontal display position setting	O	5.1
49	HPOS1	TFT horizontal display position setting	O	0
50	VPOS3	TFT vertical display position setting	O	5.1
51	VPOS2	TFT vertical display position setting	O	5.1
52	VPOS1	TFT vertical display position setting	O	0.2
53	PSET	TFT display position setting	O	5.1
54	SHIYOY-7	Operating specification setting	I	0
55	SHIYOY-6	Operating specification setting	I	0
56	SHIYOY-5	Operating specification setting	I	0
57	SHIYOY-4	Operating specification setting	I	0
58	SHIYOY-3	Operating specification setting	I	0
59	SHIYOY-2	Operating specification setting	I	0
60	SHIYOY-1	Operating specification setting	I	0
61	SHIYOY-0	Operating specification setting	I	0

Pin No.	Port	Descriptions	I/O (V)	Vol (V)
62	-	No connection	-	-
63	FAN-CONT	Not used	-	-
64	-	No connection	-	-
65	-	No connection	-	-
66	AUDIO-DI	Serial data from Head unit	I	4.9
67	AUDIO-DO	Serial data to Head unit	O	5.1
68	REAR-CAM	Vehicle revers signal	I	0
69	PKB	Parking break signal	I	0
70	REAR-CONT	Rear camera unit detection	I	0
71	-	No connection	-	-
72	OPEN	Not used	-	-
73	VPP	(Connecting to ground)	-	0
74	SLI	Monitor position detection	I	0.6
75	THM	Thermal sensor signal	I	1.9
76	-	No connection	-	-
77	-	No connection	-	-
78	-	No connection	-	-
79	-	No connection	-	-
80	-	No connection	-	-
81	-	No connection	-	-
82	AVDD	+5V power supply	-	5.1
83	AVREF	+5V power supply	-	4.9
84	GND	Ground	-	0
85	IE-BUS-	IE-BUS data	I	0
86	IE-BUS+	IE-BUS data	O	0
87	-	(Connecting to ground)	-	0
88	+B-DET	Battery level detection	I	5.1
89	REM-DA1	Remote control data	I	0.7
90	VD	Vertical sync signal	I	4.9
91	ILL-DET	ILL signal detection	I	4.9
92	ACC-DET	ACC level detection	I	5.0
93	OPEN-KEY	Open/Close button detection	I	4.9
94	I2C-IN	Serial data from Chroma/EEPROM IC	I	5.0
95	NAVI-DI	Serial data from NAVI	I	4.9
96	NAVI-DO	Serial data to NAVI	O	5.1
97	I2C-CLK	Shift clock for Chroma/EEPROM IC	O	5.1
98	I2C-OUT	Serial data to Chroma/EEPROM IC	O	5.1
99	REM-DA2	Remote control data	I	4.9
100	TILT-SW	Open/Close button detection	I	4.9

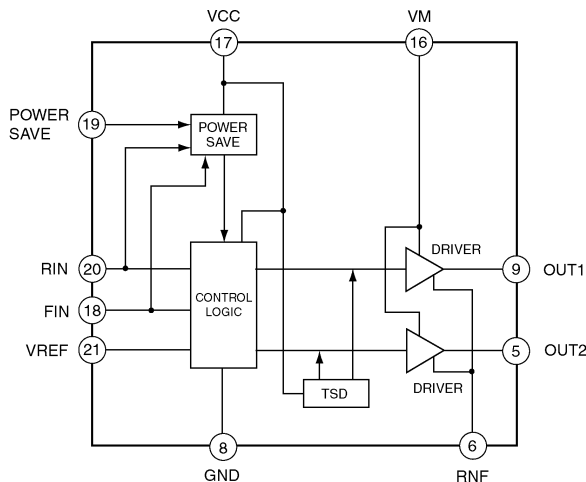
7 IC BLOCK DIAGRAM



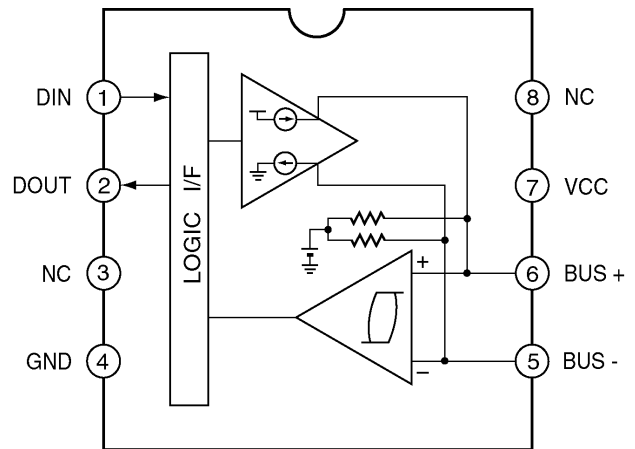
IC501 : YEAMSBX8035F



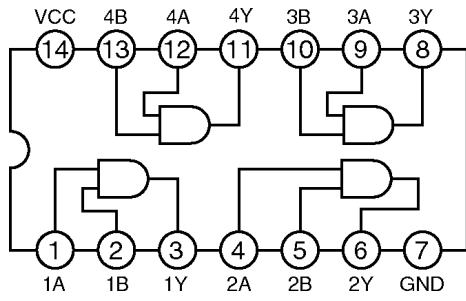
IC551 : AN8049SH-E1



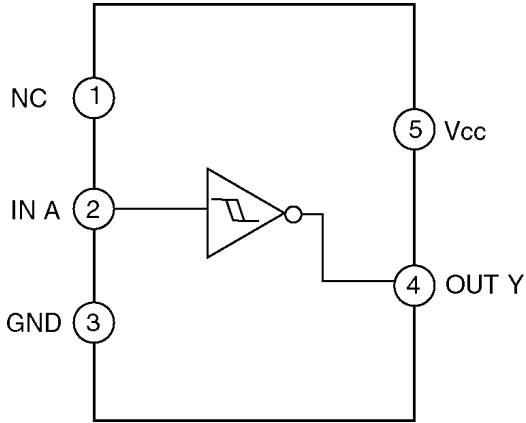
IC571 : C0GBG0000003



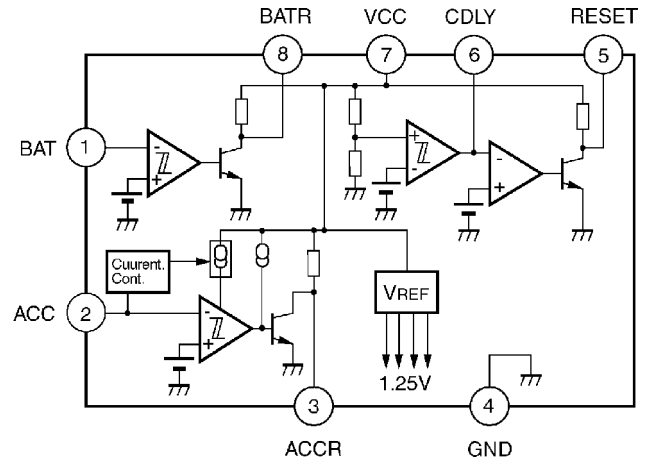
IC572 : YEAMPA0051AM



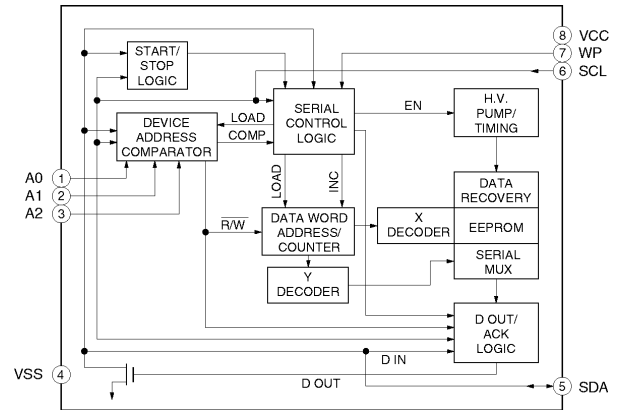
IC573 : C0JBAA000291



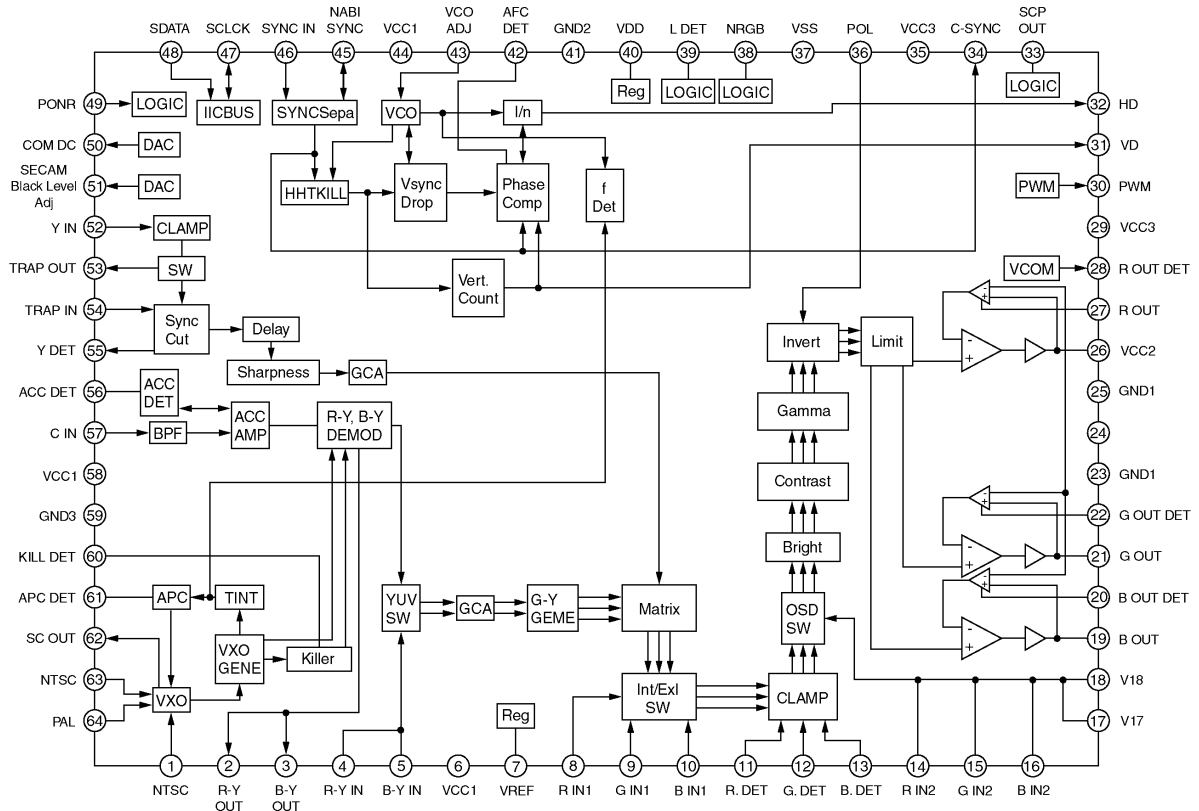
IC574 : YEAMTC7S14FL



IC703 : AN8065SE1

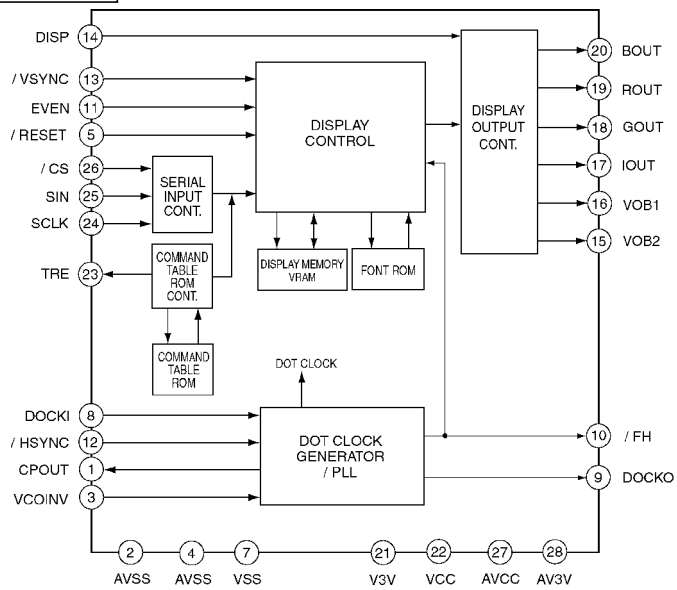


IC803 : YEAMS24C02A

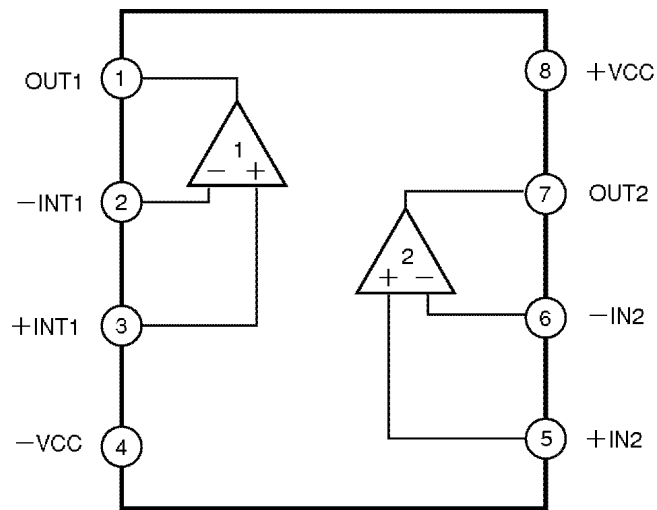


IC801 : AN2546FH-A

MAZDA / CN-TM5290A



IC840 : C1AB00001749



IC903 : YEAMM5216FP1

8 REPLACEMENT PARTS LIST

Notes :

1. Be sure to make your orders of replacement parts according to this list.
2. Important safety notice: Components, identified by Δ mark have special characteristics important for safety. When replacing any of these components, use only manufacturer's specified parts.
3. Location keys in the remarks column indicates the general location of the parts shown in the exploded drawing, as in a road map.
4. The marking (RTL) indicates that Retention Time is limited for this item. After the discontinuation of assembly in production, the item will continue to be available for a specific period of time. The retention period of availability is dependent on the type of assembly, and in accordance with the laws governing part and product retention. After the end of this period, the assembly will no longer be available.

Ref. No.	Part No.	Part Name & Description	Remarks
[E9134B] Display Block			
IC's and TRANSISTORS			
IC501	YEAMSBX8035F	IC	
IC551	AN8049SH-E1	IC	
IC571	C0GBG0000003	IC	
IC572	YEAMPA0051AM	IC	
IC573	C0JBAA000291	IC	
IC574	YEAMTC7S14FL	IC	
IC601	C2CBJG000293	IC	
IC703	AN8065SE1	IC	
IC801	AN2546FH-A	IC	
IC803	YEAMS24C02A	IC	
IC804	YEAMTC7W14FL	IC	
IC805	YEAMC78L05E2	IC	
IC840	C1AB00001749	IC	
IC841	C0JBAB000378	IC	
IC842	YEAMT7ST08UL	IC	
IC843	YEAMT7ST08UL	IC	
IC901	MN5814UB	IC	
IC902	YEAMM2115MT1	IC	
IC903	YEAMM5216FP1	IC	
Q503	B1GBCFNN0009	Transistor	
Q504	B1GBCFNN0009	Transistor	
Q572	YEANC2412KTX	Transistor	
Q703	B1ABCF000044	Transistor	
Q721	B1ABGE000003	Transistor	
Q722	B1ADDE000014	Transistor	
Q723	B1ABGE000003	Transistor	
Q751	B1GDCFGG0005	Transistor	
Q752	B1BBCL000002	Transistor	
Q753	B1BBCL000002	Transistor	
Q771	2SD1119TX	Transistor	
Q776	YEANFP1F3PT1	Transistor	
Q777	YEANC114YKX	Transistor	
Q802	B1ABCF000044	Transistor	
Q871	B1ABCF000044	Transistor	
Q872	B1ABCF000044	Transistor	
Q873	B1ABCF000044	Transistor	
Q874	B1ABCF000044	Transistor	
DIODES			
D571	YEADUZMA62T2	Diode	
D572	MA8056LMHTX	Diode	
D573	B0ACCK000005	Diode	
D577	YEADRD10M2T1	Diode	

Ref. No.	Part No.	Part Name & Description	Remarks
D578	B0ACCK000005	Diode	
D579	B0ACCK000005	Diode	
D583	B0ACCK000005	Diode	
D620	MA2J72900L	Diode	
D622	MA2J72900L	Diode	
D623	MA2J72900L	Diode	
D624	MA2J72900L	Diode	
D625	MA2J72900L	Diode	
D626	MA152WATX	Diode	
D629	MA2J72900L	Diode	
D646	MA2J72900L	Diode	
D647	MA2J72900L	Diode	
D648	MA2J72900L	Diode	
D649	MA2J72900L	Diode	
D650	MA2J72900L	Diode	
D651	MA2J72900L	Diode	
D652	MA2J72900L	Diode	
D653	MA2J72900L	Diode	
D701	MA8033LMHTX	Diode	
D702	B0ACCK000005	Diode	
D721	B0JCGD000002	Diode	
D722	B0JCGD000002	Diode	
D723	B0JCGD000002	Diode	
D771	MA736TX	Diode	
D772	B0ACCK000005	Diode	
D773	MA8051LTX	Diode	
D774	B0ACCK000005	Diode	
D801	MA152WKTX	Diode	
D936	MA2X33800L	Diode	
D938	MA2J72900L	Diode	
D939	MA2J72900L	Diode	
D951	MA2J72900L	Diode	
D952	MA2J72900L	Diode	
D962	MA8051LTX	Diode	
CAPACITORS			
C501	YECUS1C104KX	Ceramic, 0.1 μ F 16WV	
C572	YECUZ1H151JC	Ceramic, 150PF 50WV	
C573	YECUZ1H221JC	Ceramic, 220PF 50WV	
C574	YECUZ1H221JC	Ceramic, 220PF 50WV	
C578	FLH1H4710007	470PF, 50WV	
C579	FLH1H4710007	470PF, 50WV	
C580	YECUZ1C104KX	Ceramic, 0.1 μ F 16WV	
C583	YECUV1A475KX	Ceramic, 4.7 μ F 10WV	
C584	YECUZ1C104KX	Ceramic, 0.1 μ F 16WV	
C585	YECUZ1C104KX	Ceramic, 0.1 μ F 16WV	
C586	EEVFC1E330P	Electrolytic, 33 μ F 25WV	
C588	YECUV1H221JM	Ceramic, 220PF 50WV	
C589	YECUZ1H221JC	Ceramic, 220PF 50WV	
C591	YECUV1H221JM	Ceramic, 220PF 50WV	
C592	YECUV2A102KX	Ceramic, 1000PF 100WV	
C593	YECUV1A475KX	Ceramic, 4.7 μ F 10WV	
C601	YECUZ1C104KX	Ceramic, 0.1 μ F 16WV	
C603	YECUZ1H103KX	Ceramic, 0.01 μ F 50WV	
C614	EEVHA1C220R	Electrolytic, 22 μ F 16WV	
C615	FLH1H470A231	Ceramic, 47PF 50WV	
C616	FLH1H470A231	Ceramic, 47PF 50WV	
C618	FLJ1C1050013	Ceramic, 1 μ F 16WV	
C619	YECUZ1H102KX	Ceramic, 1000PF 50WV	
C620	YECUZ1H102KX	Ceramic, 1000PF 50WV	
C703	YECUZ1C104KX	Ceramic, 0.1 μ F 16WV	
C704	YECUZ1C104KX	Ceramic, 0.1 μ F 16WV	
C708	YECUZ1H102KX	Ceramic, 1000PF 50WV	
C709	FLJ1C1050013	Ceramic, 1 μ F 16WV	
C710	EEVHA0J470R	Electrolytic, 47 μ F 6.3WV	
C711	YECUZ1H103KX	Ceramic, 0.01 μ F 50WV	
C722	YECUS1C334KX	Ceramic, 0.33 μ F 16WV	
C723	YECUS1C334KX	Ceramic, 0.33 μ F 16WV	
C724	YECUS1A105KX	Ceramic, 1 μ F 10WV	
C725	YECUZ1C104KX	Ceramic, 0.1 μ F 16WV	
C726	FLH1H3310001	Ceramic, 330PF 50WV	
C728	FLH1C473A005	Ceramic, 0.047 μ F 16WV	

Ref. No.	Part No.	Part Name & Description	Remarks
C729	YECUZ1H472KX	Ceramic, 4700PF 50WV	
C731	YECUV1C225KX	Ceramic, 2.2μF 16WV	
C732	FL11E2250002	Ceramic, 2.2μF 25WV	
C733	YECUV1C225KX	Ceramic, 2.2μF 16WV	
C734	F2G1C4700007	Ceramic, 47PF 16WV	
C736	F2G1C1010011	Ceramic, 100PF 16WV	
C737	YECUZ1C104KX	Ceramic, 0.1μF 16WV	
C751	F2G1A1510001	Ceramic, 150PF 10WV	
C752	F2G1A1510001	Ceramic, 150PF 10WV	
C753	F2G1A1510001	Ceramic, 150PF 10WV	
C755	F0F2A1540001	0.15μF	
C756	ECCT3G120JG	12PF	
C757	ECCT3G120JG	12PF	
C773	EEVHA0J101P	100μF 6.3WV	
C774	EEVHA1A101WP	100μF 10WV	
C778	YECUZ1C104KX	Ceramic, 0.1μF 16WV	
C782	YECUS2A103KX	0.01μF	
C801	EEVFC0J470R	Electrolytic, 47μF 6.3WV	
C802	YECUZ1C104KX	Ceramic, 0.1μF 16WV	
C803	EEVHA1C220R	22μF 16WV	
C804	YECUZ1C104KX	Ceramic, 0.1μF 16WV	
C805	YECUZ1C104KX	Ceramic, 0.1μF 16WV	
C806	YECUZ1C104KX	Ceramic, 0.1μF 16WV	
C807	FLJ1C1050013	Ceramic, 1μF 16WV	
C808	FLJ1C1050013	Ceramic, 1μF 16WV	
C809	FLJ1C1050013	Ceramic, 1μF 16WV	
C810	YECUZ1H103KX	Ceramic, 0.01μF 50WV	
C811	YECUV1A225KX	Ceramic, 2.2μF 10WV	
C812	YECUV1A225KX	Ceramic, 2.2μF 10WV	
C813	EEVFC1A330R	33μF 10WV	
C814	YECUZ1H103KX	Ceramic, 0.01μF 50WV	
C815	YECUV1A225KX	Ceramic, 2.2μF 10WV	
C816	EEVFC1A330R	33μF 10WV	
C817	FLH1H681A021	680PF, 50WV	
C819	YECUZ1E223KX	Ceramic, 0.022μF 25WV	
C820	EEVHA1A330R	33μF 10WV	
C821	YECUZ1C104KX	Ceramic, 0.1μF 16WV	
C822	YECUS1C104KX	Ceramic, 0.1μF 16WV	
C823	EEVHA0J470R	47μF 6.3WV	
C824	YECUZ1H390JC	Ceramic, 39PF 50WV	
C825	YECUZ1C104KX	Ceramic, 0.1μF 16WV	
C826	YECUZ1C104KX	Ceramic, 0.1μF 16WV	
C827	YECUZ1C104KX	Ceramic, 0.1μF 16WV	
C828	EEVFC1A330R	33μF 10WV	
C829	YECUZ1C104KX	Ceramic, 0.1μF 16WV	
C830	YECUZ1E223KX	Ceramic, 0.022μF 25WV	
C831	FLJ1C1050013	Ceramic, 1μF 16WV	
C832	YECUZ1C104KX	Ceramic, 0.1μF 16WV	
C833	FLH1H8R0A226	Ceramic, 8PF 50WV	
C834	FL11C4750006	4.7μF 16WV	
C836	YECUZ1C104KX	Ceramic, 0.1μF 16WV	
C837	FLH1H152A021	1500PF, 50WV	
C838	FLH1A4740004	Ceramic, 0.47μF 10WV	
C839	YECUZ1E223KX	Ceramic, 0.022μF 25WV	
C840	YECUZ1C104KX	Ceramic, 0.1μF 16WV	
C841	YECUZ1C104KX	Ceramic, 0.1μF 16WV	
C842	YECUZ1H182KX	1800PF	
C843	FLJ1A2250004	2.2μF	
C845	YECUZ1H102KX	Ceramic, 1000PF 50WV	
C846	YECUZ1C104KX	Ceramic, 0.1μF 16WV	
C847	YECUZ1C104KX	Ceramic, 0.1μF 16WV	
C848	YECUZ1C104KX	Ceramic, 0.1μF 16WV	
C849	YECUZ1C104KX	Ceramic, 0.1μF 16WV	
C850	YECUZ1C104KX	Ceramic, 0.1μF 16WV	
C851	EEVHA1C220R	22μF 16WV	
C852	YECUZ1C104KX	Ceramic, 0.1μF 16WV	
C853	YECUZ1C104KX	Ceramic, 0.1μF 16WV	
C854	YECUZ1C104KX	Ceramic, 0.1μF 16WV	
C872	YECUZ1C104KX	Ceramic, 0.1μF 16WV	
C873	FLJ1C1050013	Ceramic, 1μF 16WV	
C880	EEVHA1C100R	10μF 16WV	
C884	YECUZ1C104KX	Ceramic, 0.1μF 16WV	
C913	YECUZ1C104KX	Ceramic, 0.1μF 16WV	

Ref. No.	Part No.	Part Name & Description	Remarks
C916	YECUZ1H330JC	Ceramic, 33PF 50WV	
C917	YECUZ1H330JC	Ceramic, 33PF 50WV	
C918	YECUZ1H330JC	Ceramic, 33PF 50WV	
C919	YECUZ1H330JC	Ceramic, 33PF 50WV	
C920	YECUZ1H330JC	Ceramic, 33PF 50WV	
C921	YECUZ1H330JC	Ceramic, 33PF 50WV	
C923	YECUZ1H330JC	Ceramic, 33PF 50WV	
C924	YECUZ1H330JC	Ceramic, 33PF 50WV	
C925	YECUZ1H330JC	Ceramic, 33PF 50WV	
C926	YECUZ1H330JC	Ceramic, 33PF 50WV	
C927	YECUZ1H330JC	Ceramic, 33PF 50WV	
C929	YECUZ1H330JC	Ceramic, 33PF 50WV	
C930	YECUZ1C104KX	Ceramic, 0.1μF 16WV	
C934	YECUZ1C104KX	Ceramic, 0.1μF 16WV	
C935	YECUZ1H103KX	Ceramic, 0.01μF 50WV	
C936	YECUZ1H102KX	Ceramic, 1000PF 50WV	
C937	YECUZ1H471KX	Ceramic, 470PF 50WV	
C939	FLH0J1050010	Ceramic, 1μF 6.3WV	
C941	YECUZ1C104KX	Ceramic, 0.1μF 16WV	
C946	YECUZ1C104KX	Ceramic, 0.1μF 16WV	
C951	FLJ1C1050013	Ceramic, 1μF 16WV	
C952	YECUB1H104KX	0.1μF 50WV	
C953	EEVHA1E100R	10μF 25WV	
C954	EEVHA1C100R	10μF 16WV	
C955	EEVHA0J470R	47μF 6.4WV	
C957	EEVHA0J101P	100μF 6.4WV	
C958	YECUZ1C104KX	Ceramic, 0.1μF 16WV	
C961	FLH1H3310001	Ceramic, 330PF 50WV	
C962	FLH1A4740004	Ceramic, 0.47μF 10WV	
C964	YECUZ1C104KX	Ceramic, 0.1μF 16WV	
C967	YECUZ1H103KX	Ceramic, 0.01μF 50WV	
C968	FLJ1C1050013	Ceramic, 1μF 16WV	
C970	YECUZ1C104KX	Ceramic, 0.1μF 16WV	
C971	YECUS1C334KX	Ceramic, 0.33μF 16WV	
C972	YECUB1H104KX	0.1μF 50WV	
RESISTORS			
R501	ERJ6GEYJ470	Chip, 47Ω 1/10W	
R507	ERJ3GEY0R00V	Chip, 0Ω 1/16W	
R514	ERJ3GEYJ103V	Chip, 10kΩ 1/16W	
R515	ERJ3GEYJ103V	Chip, 10kΩ 1/16W	
R516	ERJ3GEYJ103V	Chip, 10kΩ 1/16W	
R517	ERJ3GEYJ103V	Chip, 10kΩ 1/16W	
R518	ERJ3GEYJ103V	Chip, 10kΩ 1/16W	
R520	ERJ3GEYJ103V	Chip, 10kΩ 1/16W	
R521	ERJ3GEYJ103V	Chip, 10kΩ 1/16W	
R567	ERJ6GEYJ680	Chip, 68Ω 1/10W	
R572	ERJ3GEY0R00V	Chip, 0Ω 1/16W	
R573	ERJ12YJ101H	100Ω 1/2W	
R574	ERJ12YJ101H	100Ω 1/2W	
R575	ERJ6GEY0R00V	Chip, 0Ω 1/10W	
R576	ERJ6GEY0R00V	Chip, 0Ω 1/10W	
R577	ERJ3GEY0R00V	Chip, 0Ω 1/16W	
R578	ERJ3GEYJ223V	Chip, 22kΩ 1/16W	
R579	ERJ3GEYJ223V	Chip, 22kΩ 1/16W	
R580	ERJ3GEYJ103V	Chip, 10kΩ 1/16W	
R581	ERJ3GEYJ103V	Chip, 10kΩ 1/16W	
R582	ERJ3GEYJ104V	Chip, 100kΩ 1/16W	
R583	ERJ3GEYJ471V	Chip, 470Ω 1/16W	
R584	ERJ3GEYJ101V	Chip, 100Ω 1/16W	
R585	ERJ3GEYJ104V	Chip, 100kΩ 1/16W	
R586	ERJ3GEYJ473V	Chip, 47kΩ 1/16W	
R589	ERJ3GEYJ473V	Chip, 47kΩ 1/16W	
R591	ERJ3GEYJ103V	Chip, 10kΩ 1/16W	
R592	ERJ3GEYJ472V	Chip, 4.7kΩ 1/16W	
R593	ERJ12YJ3R9H	Chip, 3.9Ω 1/2W	
R594	ERJ3GEYJ103V	Chip, 10kΩ 1/16W	
R595	ERJ3GEYJ473V	Chip, 47kΩ 1/16W	
R600	ERJ3GEYJ102V	Chip, 1kΩ 1/16W	
R610	ERJ3GEYJ102V	Chip, 1kΩ 1/16W	
R615	ERJ3GEYJ101V	Chip, 100Ω 1/16W	
R620	ERJ3GEYJ101V	Chip, 100Ω 1/16W	

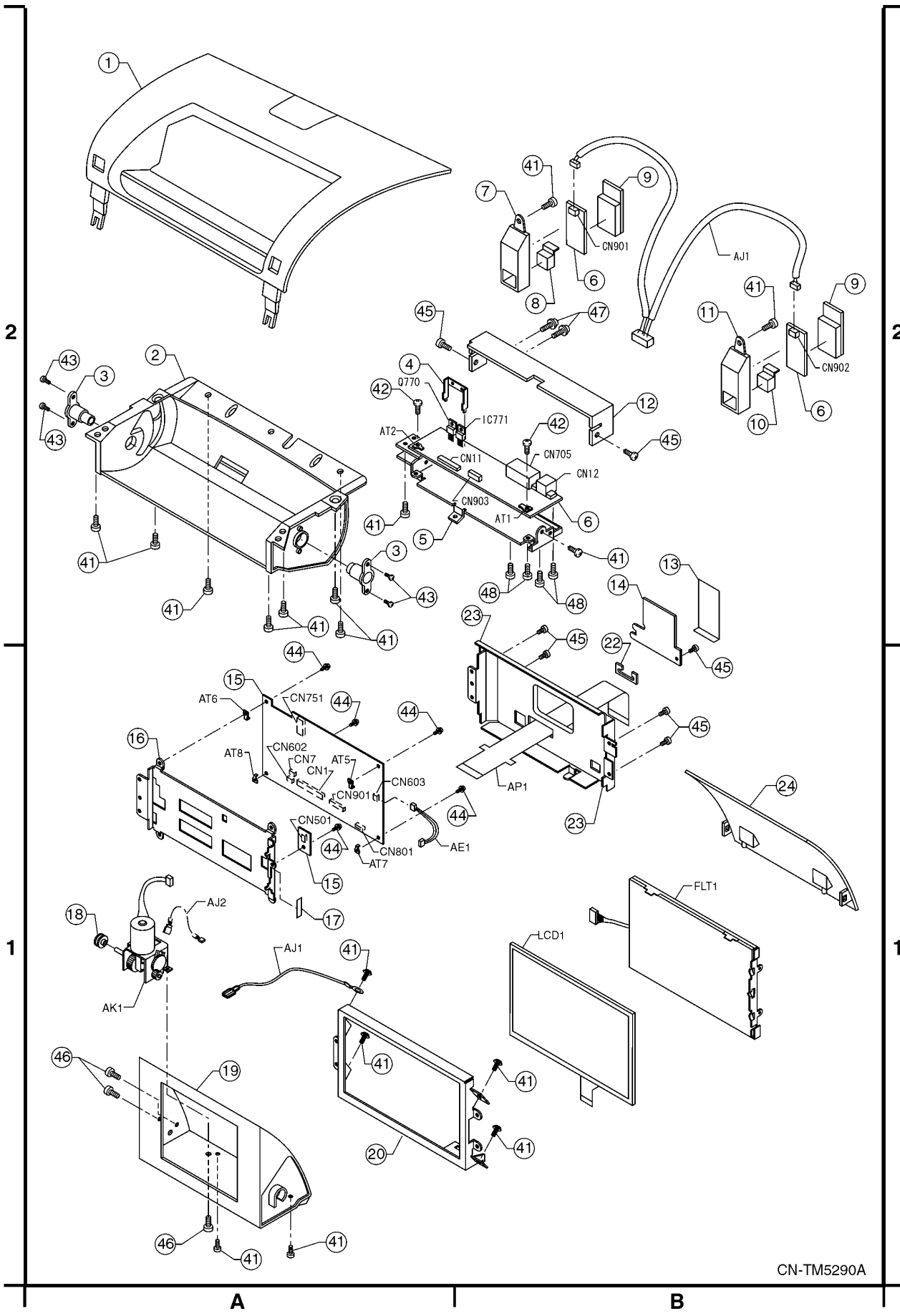
Ref. No.	Part No.	Part Name & Description	Remarks
R621	ERJ3GEYJ102V	Chip, 1kΩ 1/16W	
R629	ERJ3GEYJ101V	Chip, 100Ω 1/16W	
R634	ERJ6GEYJ103	Chip, 10kΩ 1/10W	
R659	ERJ3GEYJ103V	Chip, 10kΩ 1/16W	
R670	ERJ3GEYJ102V	Chip, 1kΩ 1/16W	
R673	ERJ3GEYJ473V	Chip, 47kΩ 1/16W	
R674	ERJ3GEYJ102V	Chip, 1kΩ 1/16W	
R675	ERJ3GEYJ473V	Chip, 47kΩ 1/16W	
R683	ERJ3GEY0R00V	Chip, 0Ω 1/16W	
R685	ERJ3GEYJ102V	Chip, 1kΩ 1/16W	
R686	ERJ3GEYJ102V	Chip, 1kΩ 1/16W	
R687	ERJ3GEYJ473V	Chip, 47kΩ 1/16W	
R689	ERJ3GEYJ102V	Chip, 1kΩ 1/16W	
R690	ERJ3GEYJ102V	Chip, 1kΩ 1/16W	
R693	ERJ3GEYJ103V	Chip, 10kΩ 1/16W	
R694	ERJ3GEYJ103V	Chip, 10kΩ 1/16W	
R695	ERJ3GEY0R00V	Chip, 0Ω 1/16W	
R697	ERJ3GEY0R00V	Chip, 0Ω 1/16W	
R698	ERJ3GEYJ102V	Chip, 1kΩ 1/16W	
R699	ERJ3GEYJ102V	Chip, 1kΩ 1/16W	
R703	ERJ3GEYJ221V	Chip, 220Ω 1/16W	
R704	ERJ6RED274V	Metal Film, 270kΩ 1/10W	
R705	ERJ6RBD433V	Metal Film, 43kΩ 1/10W	
R706	ERJ6RBD273V	Metal Film, 27kΩ 1/10W	
R707	ERJ6RBD472V	Metal Film, 4.7kΩ 1/10W	
R708	ERJ3GEYJ473V	Chip, 47kΩ 1/16W	
R723	ERJ3GEYJ100V	Chip, 10Ω 1/16W	
R724	ERJ3GEYJ104V	Chip, 100kΩ 1/16W	
R725	ERJ3GEYJ223V	Chip, 22kΩ 1/16W	
R726	ERJ3GEYJ102V	Chip, 1kΩ 1/16W	
R727	ERJ3GEYJ821V	Chip, 820Ω 1/16W	
R728	ERJ3GEYJ821V	Chip, 820Ω 1/16W	
R729	ERJ3GEYJ104V	Chip, 100kΩ 1/16W	
R730	ERJ3GEYJ472V	Chip, 4.7kΩ 1/16W	
R731	ERJ3GEY0R00V	Chip, 0Ω 1/16W	
R732	ERJ6GEYJ200	20Ω 1/10W	
R733	ERJ3GEYJ104V	Chip, 100kΩ 1/16W	
R734	ERJ3GEYJ822V	Chip, 8.2kΩ 1/16W	
R735	ERJ3GEYJ822V	Chip, 8.2kΩ 1/16W	
R738	ERJ3GEYJ222V	Chip, 2.2kΩ 1/16W	
R739	ERJ3GEYJ682V	Chip, 6.8kΩ 1/16W	
R751	ERJ3GEYJ273V	Chip, 27kΩ 1/16W	
R752	ERJ12YJ331H	330ohm; 1/2W	
R771	ERJ8GEYJ2R2V	Chip, 2.2Ω 1/8W	
R772	ERJ3GEYJ223V	Chip, 22kΩ 1/16W	
R773	ERJ3GEYJ102V	Chip, 1kΩ 1/16W	
R791	ERJ6GEY0R00V	Chip, 0Ω 1/10W	
R793	ERJ6GEY0R00V	Chip, 0Ω 1/10W	
R794	ERJ6GEY0R00V	Chip, 0Ω 1/10W	
R807	ERJ3GEYJ823V	Chip, 82kΩ 1/16W	
R808	ERJ3GEYJ104V	Chip, 100kΩ 1/16W	
R810	ERJ3GEYJ473V	Chip, 47kΩ 1/16W	
R811	ERJ3GEYJ105V	Chip, 1MΩ 1/16W	
R812	YER816P1002D	Chip, 10kΩ 1/16W	
R815	ERJ3GEYJ202V	Chip, 2kΩ 1/16W	
R816	ERJ3GEYJ512V	Chip, 5.1kΩ 1/16W	
R818	ERJ3GEYJ102V	Chip, 1kΩ 1/16W	
R819	ERJ3GEYJ104V	Chip, 100kΩ 1/16W	
R820	ERJ3GEYJ331V	Chip, 330Ω 1/16W	
R822	ERJ3GEYJ683V	Chip, 68kΩ 1/16W	
R826	ERJ3GEYJ332V	Chip, 3.3kΩ 1/16W	
R829	ERJ3GEY0R00V	Chip, 0Ω 1/16W	
R830	ERJ3GEY0R00V	Chip, 0Ω 1/16W	
R841	ERJ3GEYJ471V	Chip, 470Ω 1/16W	
R842	ERJ3GEYJ560V	Chip, 56Ω 1/16W	
R844	ERJ3GEYJ562V	Chip, 5.6kΩ 1/16W	
R845	ERJ3GEYJ102V	Chip, 1kΩ 1/16W	
R846	ERJ3GEYJ562V	Chip, 5.6kΩ 1/16W	
R847	ERJ3GEYJ102V	Chip, 1kΩ 1/16W	
R848	ERJ3GEYJ562V	Chip, 5.6kΩ 1/16W	
R849	ERJ3GEYJ102V	Chip, 1kΩ 1/16W	
R856	ERJ3GEYJ222V	Chip, 2.2kΩ 1/16W	
R857	ERJ3GEYJ471V	Chip, 470Ω 1/16W	

Ref. No.	Part No.	Part Name & Description	Remarks
R858	ERJ3GEYJ471V	Chip, 470Ω 1/16W	
R859	ERJ3GEYJ471V	Chip, 470Ω 1/16W	
R860	ERJ3GEYJ102V	Chip, 1kΩ 1/16W	
R861	ERJ3GEYJ102V	Chip, 1kΩ 1/16W	
R864	ERJ3GEYJ222V	Chip, 2.2kΩ 1/16W	
R867	ERJ3GEYJ683V	Chip, 68kΩ 1/16W	
R868	ERJ3GEYJ223V	Chip, 22kΩ 1/16W	
R869	ERJ3GEYJ561V	Chip, 560Ω 1/16W	
R872	ERJ6GEYJ333	Chip, 33kΩ 1/10W	
R874	ERJ3GEYJ153V	Chip, 15kΩ 1/16W	
R881	ERJ3GEYJ102V	Chip, 1kΩ 1/16W	
R883	ERJ3GEYJ223V	Chip, 22kΩ 1/16W	
R884	ERJ3GEYJ561V	Chip, 560Ω 1/16W	
R885	ERJ3GEYJ393V	Chip, 39kΩ 1/16W	
R886	ERJ3GEY0R00V	Chip, 0Ω 1/16W	
R901	ERJ3GEY0R00V	Chip, 0Ω 1/16W	
R902	ERJ3GEY0R00V	Chip, 0Ω 1/16W	
R903	ERJ3GEYJ102V	Chip, 1kΩ 1/16W	
R904	ERJ3GEYJ102V	Chip, 1kΩ 1/16W	
R905	ERJ3GEY0R00V	Chip, 0Ω 1/16W	
R906	ERJ3GEY0R00V	Chip, 0Ω 1/16W	
R907	ERJ3GEY0R00V	Chip, 0Ω 1/16W	
R908	ERJ3GEY0R00V	Chip, 0Ω 1/16W	
R909	ERJ3GEYJ102V	Chip, 1kΩ 1/16W	
R910	ERJ3GEYJ102V	Chip, 1kΩ 1/16W	
R911	ERJ3GEYJ102V	Chip, 1kΩ 1/16W	
R912	ERJ3GEYJ102V	Chip, 1kΩ 1/16W	
R922	ERJ3GEY0R00V	Chip, 0Ω 1/16W	
R928	ERJ3GEY0R00V	Chip, 0Ω 1/16W	
R931	ERJ3GEYJ102V	Chip, 1kΩ 1/16W	
R932	ERJ3GEYJ102V	Chip, 1kΩ 1/16W	
R936	ERJ3GEYJ104V	Chip, 100kΩ 1/16W	
R937	ERJ3GEY0R00V	Chip, 0Ω 1/16W	
R941	ERJ3GEYJ102V	Chip, 1kΩ 1/16W	
R942	ERJ3GEYJ102V	Chip, 1kΩ 1/16W	
R943	ERJ3GEYJ102V	Chip, 1kΩ 1/16W	
R944	ERJ3GEYJ102V	Chip, 1kΩ 1/16W	
R945	ERJ3GEYJ102V	Chip, 1kΩ 1/16W	
R947	ERJ3GEYJ103V	Chip, 10kΩ 1/16W	
R948	ERJ3GEY0R00V	Chip, 0Ω 1/16W	
R951	ERJ3GEYJ333V	Chip, 33kΩ 1/16W	
R953	ERJ3GEYJ123V	Chip, 12kΩ 1/16W	
R954	ERJ3GEYJ274V	Chip, 270kΩ 1/16W	
R955	ERJ8GEYJ470V	Chip, 47Ω 1/8W	
R956	ERJ3GEYJ152V	Chip, 1.5kΩ 1/16W	
R957	ERJ3GEYJ122V	Chip, 1.2kΩ 1/16W	
R958	ERJ3GEYJ680V	Chip, 68Ω 1/16W	
R959	ERJ3GEY0R00V	Chip, 0Ω 1/16W	
R960	ERJ3GEYJ104V	Chip, 100kΩ 1/16W	
R961	ERJ3GEYJ103V	Chip, 10kΩ 1/16W	
R962	ERJ3GEYJ184V	Chip, 180kΩ 1/16W	
R963	ERJ3GEYJ105V	Chip, 1MΩ 1/16W	
R964	ERJ3GEYJ473V	Chip, 47kΩ 1/16W	
R965	ERJ3GEYJ683V	Chip, 68kΩ 1/16W	
R966	ERJ3GEYJ472V	Chip, 4.7kΩ 1/16W	
R967	ERJ3GEYJ683V	Chip, 68kΩ 1/16W	
R968	ERJ3GEYJ472V	Chip, 4.7kΩ 1/16W	
R969	ERJ3GEY0R00V	Chip, 0Ω 1/16W	
R970	ERJ3GEY0R00V	Chip, 0Ω 1/16W	
R985	ERJ3GEY0R00V	Chip, 0Ω 1/16W	
R986	ERJ3GEYJ223V	Chip, 22kΩ 1/16W	
CONNECTORS			
CN1	K1MN30B00008	Connector, 30P	
CN7	YEAES339802	Connector, 2P	
CN501	YEAES326103	Connector, 3P	
CN601	YEAEBM07BSRS	Connector, 7P	
CN602	YEAES339803	Connector, 3P	
CN603	YEAES326103	Connector, 3P	
CN751	K1KA04B00104	Connector, 4P	
CN801	YEAEBM07BSRS	Connector, 7P	
CN901	YEAES243730	Connector, 30P	

Ref. No.	Part No.	Part Name & Description	Remarks
COILS			
L601	YELTBLM21A10	Coil	
L602	YELTBLM21A10	Coil	
L700	YELTBLM21A10	Coil	
L707	YELTBLM21A10	Coil	
L708	YELTBLM21A10	Coil	
L720	YELTBLM21A10	Coil	
L721	GLA101D00007	Coil	
L722	GLA680E00002	Coil	
L723	GLA331C00002	Coil	
L725	G1C330K00010	Coil	
L751	GLA390G00003	Coil	
L752	GLA390G00003	Coil	
L753	YELTBLM2A102	Coil	
L771	YELTBLM21A10	Coil	
L801	YELTBLM21A10	Coil	
L802	YELT03N470JT	Coil	
L803	YELT03N470JT	Coil	
L804	YELT03N470JT	Coil	
L805	YELT03N470JT	Coil	
L807	YELTBLM21A10	Coil	
L808	YELTBLM2B222	Coil	
L809	YELTBLM2B222	Coil	
L810	YELTBLM2B222	Coil	
L811	YELTBLM21A10	Coil	
L843	YELTBLM21A10	Coil	
L845	YELTBLM21A10	Coil	
L846	YELTBLM2B222	Coil	
L847	YELTBLM2B222	Coil	
L849	YELTBLM2B222	Coil	
L854	YELTBLM21A10	Coil	
L904	JOJBD0000026	Coil	
L937	G1C1R0J00003	Coil	
L941	G1C101K00009	Coil	
L942	YELTBLM21A10	Coil	
L943	G1C101K00009	Coil	
L946	YELTBLM21A10	Coil	
L947	YELTBLM21A10	Coil	
L952	YELTBLM21A10	Coil	
CRYSTALS			
XL601	YEXLCSAC125T	Crystal	
XL801	YEXL49FW3579	Crystal	
VARIABLE RESISTORS			
VR901	EVM7JSX30B54	Variablr resistor	
VR902	EVM7JSX30B54	Variablr resistor	
NETWORK RESISTORS			
RA601	EXBV8V102JV	Network Resistor	
RA602	EXBV8V102JV	Network Resistor	
RA603	EXBV8V101JV	Network Resistor	
RA605	EXBV8V102JV	Network Resistor	
RA606	EXBV8V102JV	Network Resistor	
RA607	EXBV8V102JV	Network Resistor	
RA646	EXBV8V101JV	Network Resistor	
RA650	EXBV8V101JV	Network Resistor	
RA721	EXBV8V334JV	Network Resistor	
RA722	EXBV8V103JV	Network Resistor	
RA901	EXBV8V101JV	Network Resistor	
RA902	EXBV8V101JV	Network Resistor	
RA903	EXBV8V101JV	Network Resistor	
TRANSFORMERS			
T750	ETJ20K12AM	TRANSFORMER	

Ref. No.	Part No.	Part Name & Description	Remarks
[E9267A] Connector/SW Block			
IC's and TRANSISTORS			
IC575	C0BBBA000024	IC	
IC771	AN7805F	IC	
IC772	YEAM78L08T3	IC	
IC872	B0BD6R800002	IC	
Q573	YEANC114WKTX	Transistor	
Q574	B1ABCF000044	Transistor	
Q770	2SD1265A	Transistor	
Q778	2SB1398TA	Transistor	
Q779	YEANC114YKX	Transistor	
Q901	B1GDCFJJ0002	Transistor	
Q902	B1ABCF000044	Transistor	
Q903	B1ABCF000044	Transistor	
Q904	2SD2139TA	Transistor	
DIODES			
D573	MA8068MTX	Diode	
D574	YEADDEC10DS1	Diode	
D575	MA153TX	Diode	
D576	MA3X152K0L	Diode	
D580	YEADUZMA62T2	Diode	
D777	MA3X152K0L	Diode	
D795	YEADZSA5A27F	Diode	
D871	YEADUZMA62T2	Diode	
D901	B0ACCK000005	Diode	
D902	YEARDR56M2T1	Diode	
D903	B0ACCK000005	Diode	
D904	MA2J72900L	Diode	
CAPACITORS			
C571	F1J1H102A394	1000PF 50WV	
C572	YECUS1H103ZF	Ceramic, 0.01µF 50WV	
C573	YECUS1C104KX	Ceramic, 0.1µF 16WV	
C574	YECUB1H104KX	0.1µF 50WV	
C577	YECUS1C104KX	Ceramic, 0.1µF 16WV	
C587	YECUS1C104KX	Ceramic, 0.1µF 16WV	
C771	YECUS1C334KX	Ceramic, 0.33µF 16WV	
C772	ECA1EHG102B	1000PF 25WV	
C775	YECUS1C334KX	Ceramic, 0.33µF 16WV	
C776	EEUFC1A221H	Electrolytic, 220µF 16WV	
C783	YECUS1C334KX	Ceramic, 0.33µF 16WV	
C784	YECUS1C104KX	Ceramic, 0.1µF 16WV	
C785	YECUS1C104KX	Ceramic, 0.1µF 16WV	
C786	EEUFC1A221H	Electrolytic, 220µF 16WV	
C787	EEUFC1A470H	Electrolytic, 47µF 10WV	
C789	ECA1EHG102B	Electrolytic, 1000µF 25WV	
C790	YECUB1H104KX	0.1µF 50WV	
C791	YECUB1H104KX	0.1µF 50WV	
C794	ECA1EHG102B	Electrolytic, 1000µF 25WV	
C795	ECA1EHG102B	Electrolytic, 1000µF 25WV	
C796	YECUB1H104KX	0.1µF 50WV	
C797	YECUB1H104KX	0.1µF 50WV	
C871	YECUS1H220JC	Ceramic, 22PF 50WV	
C874	YECUS1H220JC	Ceramic, 22PF 50WV	
C875	YECUS1H220JC	Ceramic, 22PF 50WV	
C876	YECUS1H220JC	Ceramic, 22PF 50WV	
C877	YECUS1H220JC	Ceramic, 22PF 50WV	
C878	YECUB1H104KX	0.1µF 50WV	
C879	YECUB1H104KX	0.1µF 50WV	
C901	YECUS1C104KX	Ceramic, 0.1µF 16WV	
C902	EEAGA1C100H	10µF 16WV	
RESISTORS			
R563	ERJ6GEYJ101	Chip, 100Ω 1/10W	
R565	ERJ6GEYJ153	Chip, 15kΩ 1/10W	
R568	ERJ6GEYJ103	Chip, 10kΩ 1/10W	
R569	ERJ6GEYJ273	Chip, 27kΩ 1/10W	
R571	ERJ6GEYJ473	Chip, 47kΩ 1/10W	

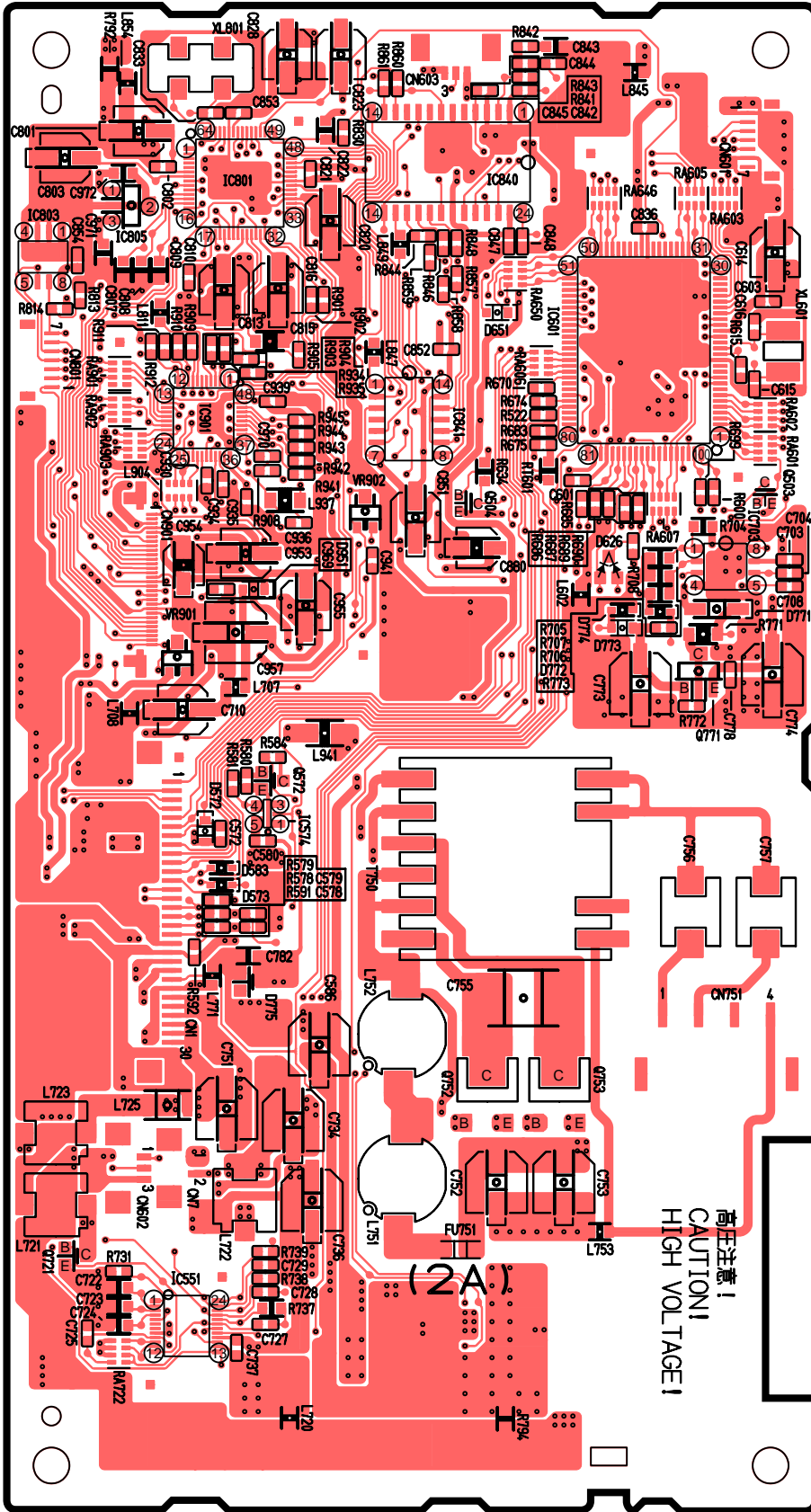
9 EXPLODED VIEW



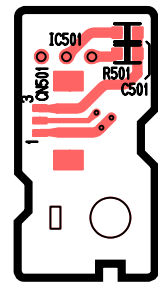
CN-TM5290A

10 WIRING DIAGRAM

10.1. Display Block (Top View)

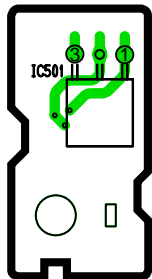
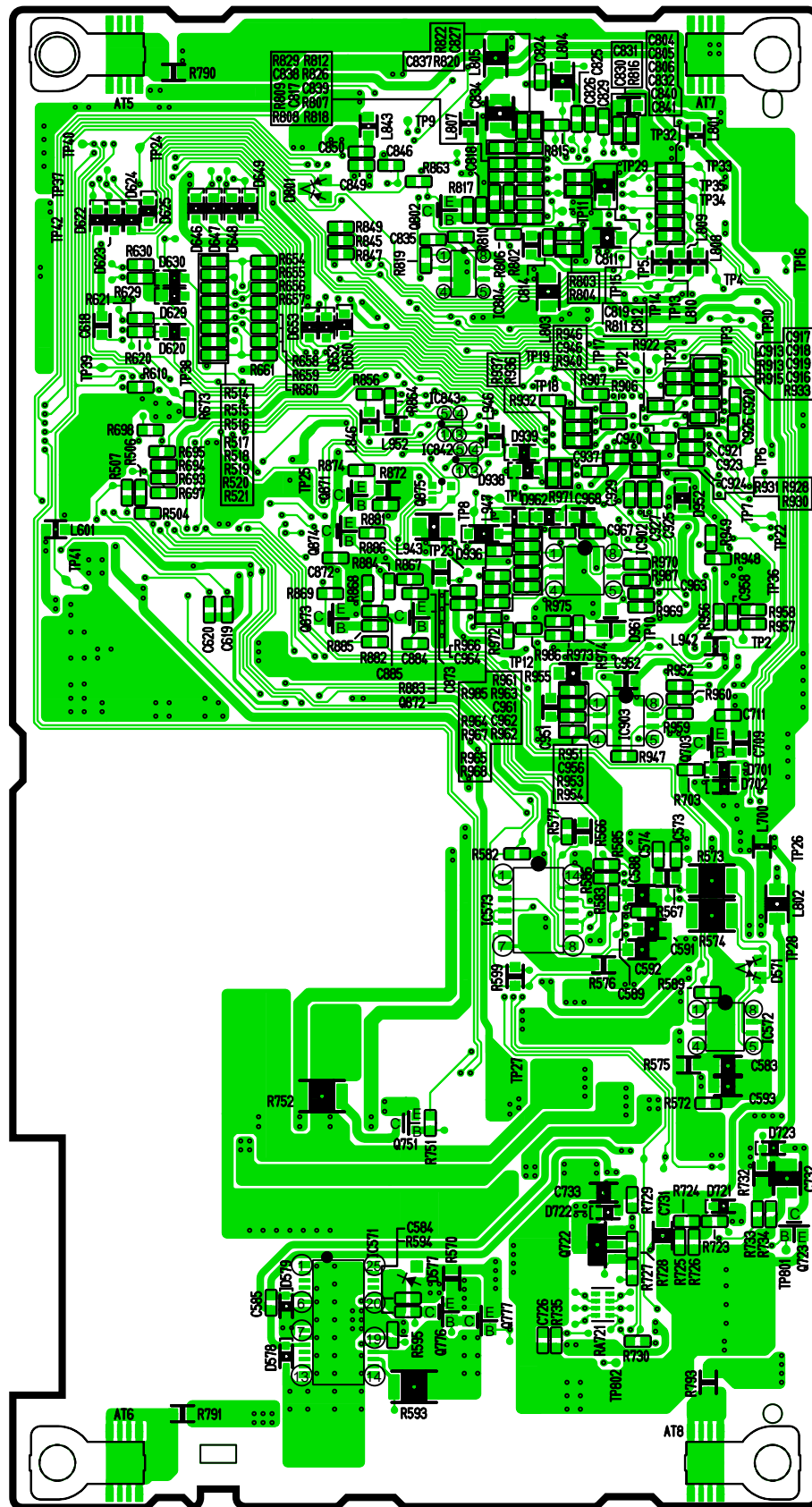


[E-9134Ba] [Top View]



[E-9134Bb]
[Top View]

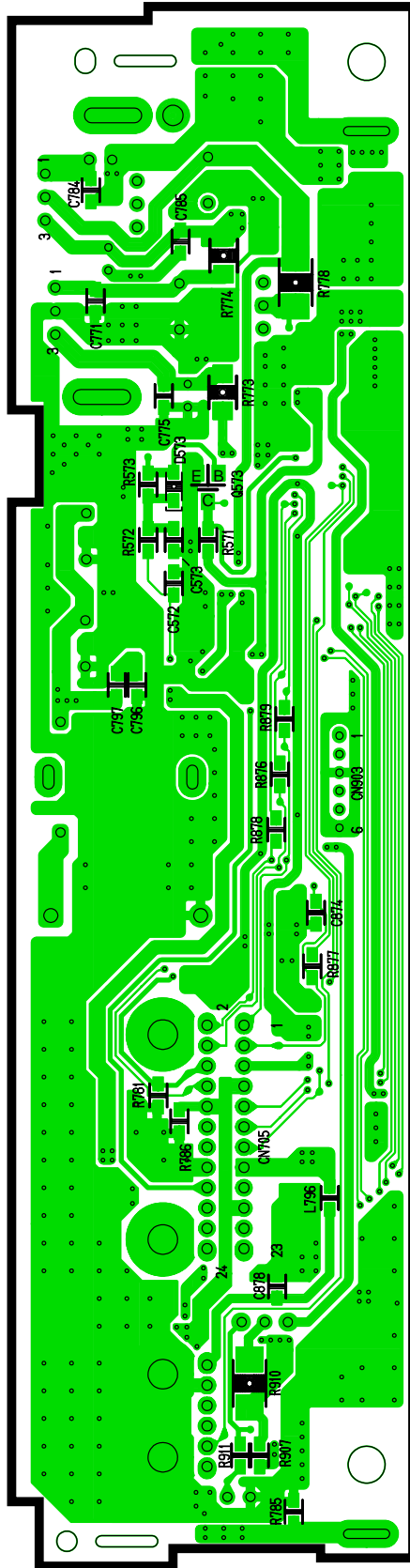
10.2. Display Block (Bottom View)



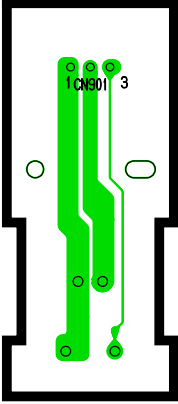
[E-9134Bb]
[Bottom View]

[E-9134Ba] [Bottom View]

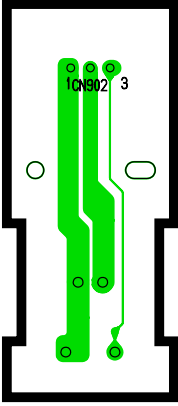
10.4. Connector/SW Block (Bottom View)



[E-9267Aa][Bottom View]



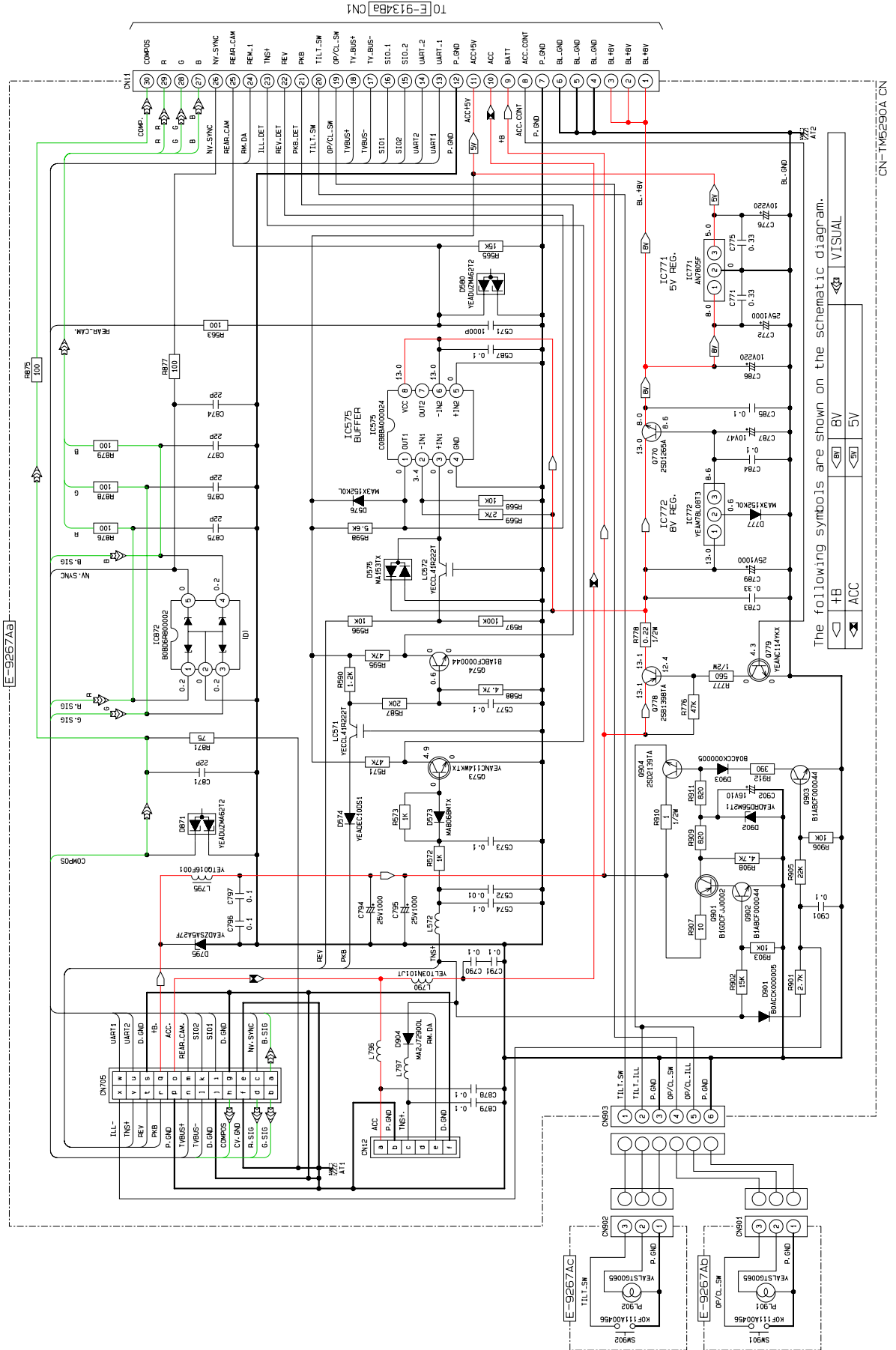
[E-9267Ab]
[Bottom View]



[E-9267Ac]
[Bottom View]

11 SCHEMATIC DIAGRAM-1

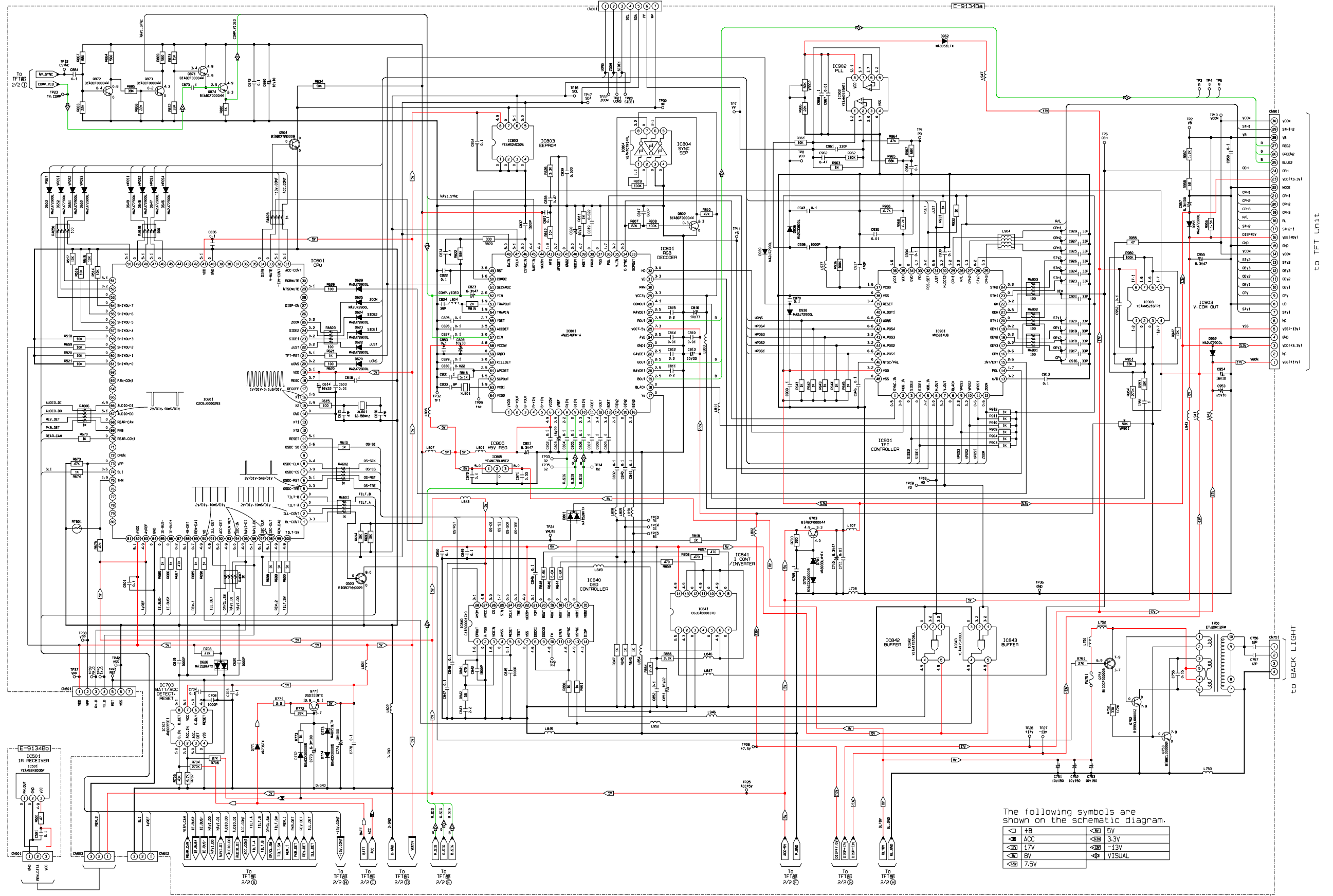
11.1. Connector/SW Block



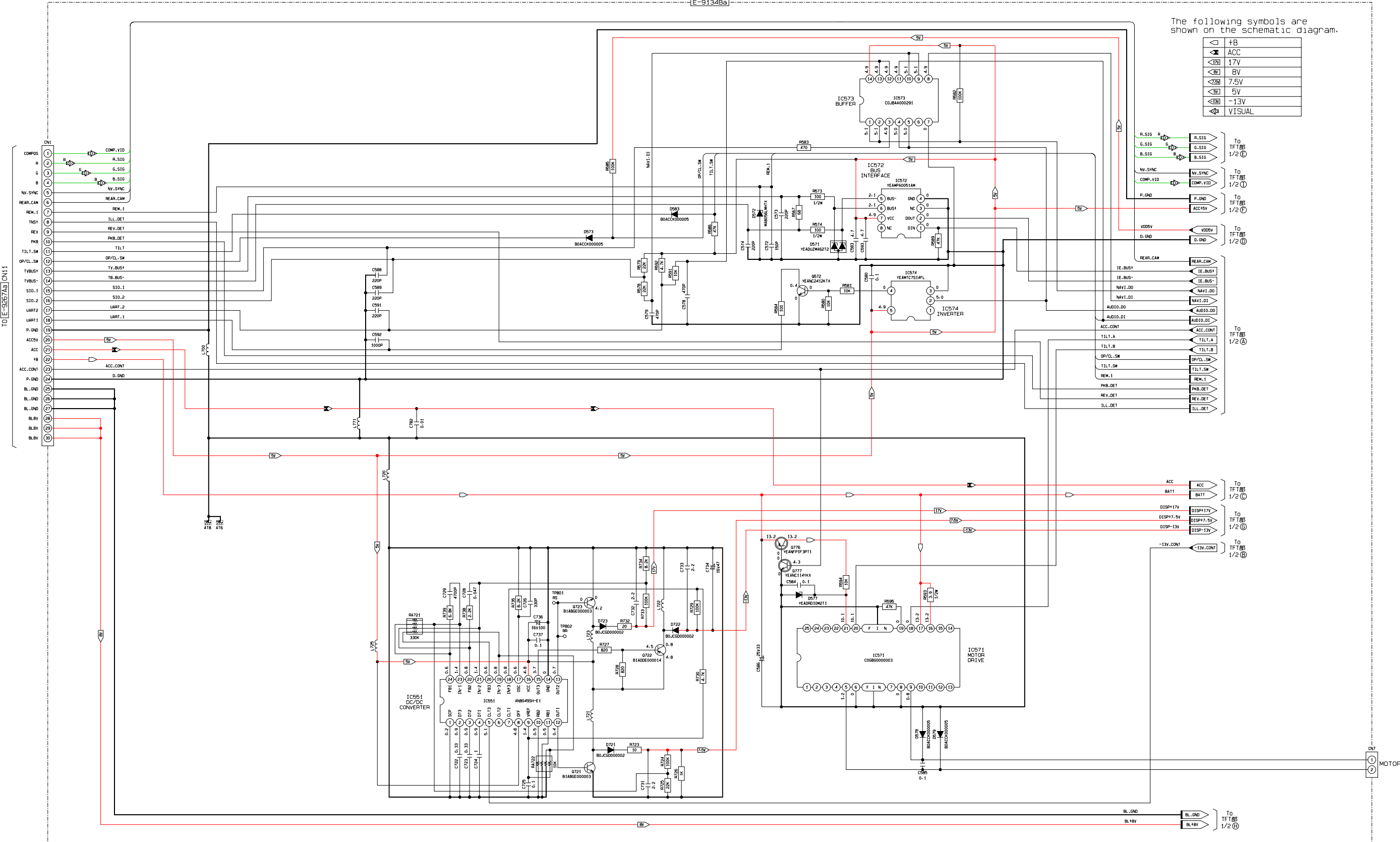
**THIS PAGE IS JUST FOR
THE PAGE LAYOUT USE
ONLY.**

12 SCHEMATIC DIAGRAM-2

12.1. Display Block -1



12.2. Display Block -2



The following symbols are shown on the schematic diagram.

	+B
	ACC
	17V
	BV
	7.5V
	5V
	-13V
	VISUAL

R.SIG → To TFT部 1/2 (E)
 G.SIG → To TFT部 1/2 (E)
 B.SIG → To TFT部 1/2 (E)
 NY_SYNC → To TFT部 1/2 (E)
 COMP_VID → To TFT部 1/2 (E)
 P.GND → To TFT部 1/2 (E)
 ACC15V → To TFT部 1/2 (E)
 VDD5V → To TFT部 1/2 (E)
 D.GND → To TFT部 1/2 (E)

REAR_CAM → To TFT部 1/2 (A)
 IE_BUS+ → To TFT部 1/2 (A)
 IE_BUS- → To TFT部 1/2 (A)
 NAVI_DD → To TFT部 1/2 (A)
 NAVI_DI → To TFT部 1/2 (A)
 AUDIO_DD → To TFT部 1/2 (A)
 AUDIO_DI → To TFT部 1/2 (A)
 ACC_CONT → To TFT部 1/2 (A)
 TILT_A → To TFT部 1/2 (A)
 TILT_B → To TFT部 1/2 (A)
 OP/CL_SW → To TFT部 1/2 (A)
 TILT_SW → To TFT部 1/2 (A)
 REM_1 → To TFT部 1/2 (A)
 PKB_DET → To TFT部 1/2 (A)
 REV_DET → To TFT部 1/2 (A)
 ILL_DET → To TFT部 1/2 (A)

ACC → To TFT部 1/2 (C)
 BATT → To TFT部 1/2 (C)
 DISP+17V → To TFT部 1/2 (C)
 DISP+7.5V → To TFT部 1/2 (C)
 DISP+5V → To TFT部 1/2 (C)
 DISP-13V → To TFT部 1/2 (C)

-13V_CONT → To TFT部 1/2 (D)
 -13V_CONT → To TFT部 1/2 (D)

BL_GND → To TFT部 1/2 (Z)
 BL_17V → To TFT部 1/2 (Z)