

- E0003-042
E0003-042.sch
- ABILTAAUX
 - VBYP
 - RELEBYPKO
 - VOUT
 - IOUTR
 - IOUT
 - RELEINVKO
 - VINVBIL
 - VOUTREG
 - VOUTCURPROT
 - VING
 - IAC+
 - IAC-
 - SURUP
 - +400V
 - NEUTRO
 - SURDW
 - 400V
 - PLUSPFC
 - PLUSMICRO
 - PLUSPROT
 - ABILTAAUX
 - MINUSMICRO
 - MINUSPROT
 - MINUSPFC
 - NEUTRO
 - BATTSURDW
 - BATT
 - +BATT
 - 400V
 - NEUTRO
 - +400V
 - GND
 - LEM+
 - NEUTRO
 - RELEBAT1
 - 8V
 - +BATTCB
 - GND
 - SURDW
 - BATTBOX+
 - BATTBOX-
 - RELEING1
 - RELEING2
 - +13V
 - RELEINV1
 - RELEINV2
 - RELEBYP1
 - RELEBYP2
 - RELEBAT2
 - IOUT
 - LEM-
 - LEMINV
 - 13V

- E0003-043
E0003-043.sch
- /RELEINGOPEN
 - RELEING2
 - RELEING1
 - +13V
 - /RELEINV
 - RELEINV2
 - RELEINV1
 - /RELEBYP
 - RELEBYP2
 - RELEBYP1
 - /RELEBATON
 - RELEBAT2
 - RELEBAT1
 - +400V
 - 400V
 - GINVUP
 - EINVUP
 - GINVDW
 - EINVVDW
 - IOUT
 - PIL_BACKLIGHT
 - A_BACKLIGHT
 - K_BACKLIGHT

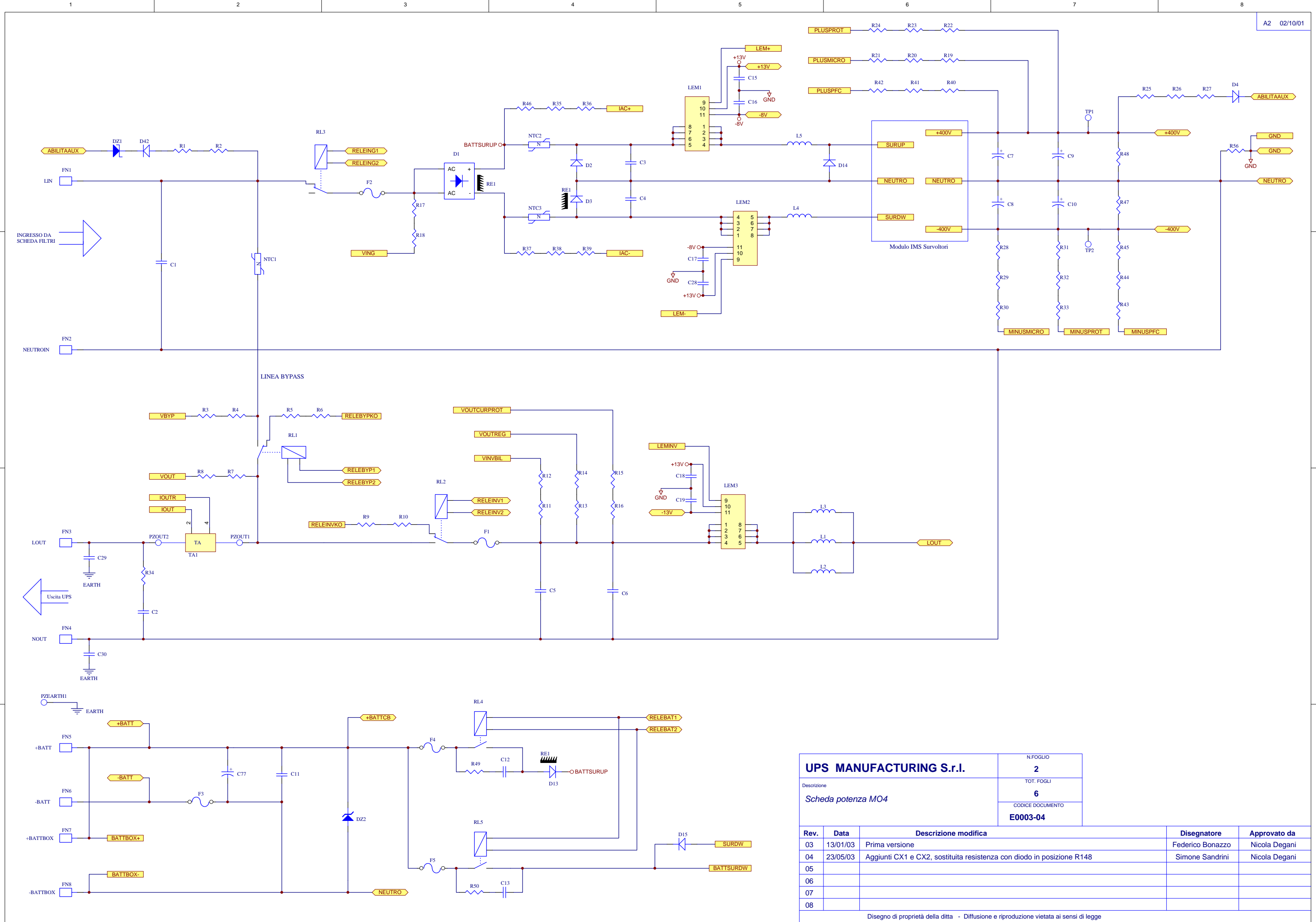
- E0003-044
E0003-044.sch
- +400V
 - NEUTRO
 - CBON
 - CBV
 - +BATTCB
 - NEUTRO
 - 400V
 - +8V
 - +17VINVDW
 - GND

- E0003-045
E0003-045.sch
- +BATT
 - NEUTRO
 - ONUPS
 - BT1
 - ABILTAAUX
 - +13V
 - GND
 - +17VINVUP
 - 10VSURDW
 - +17VINVUP
 - 10VINVUP
 - +17VINVDW
 - 10VINVDW
 - +8V
 - 8V
 - INT1
 - INT2
 - GND
 - +13V
 - 13V
 - +8V
 - 8V
 - VBATMICRO
 - +17VSURDW

- E0003-046
E0003-046.sch
- PILSURUP
 - GSURUP
 - ESURUP
 - PILINVUP
 - PILSURDW
 - GSURDW
 - ESURDW
 - PILINVDW
 - IAC+
 - LEM+
 - PLUSPFC
 - PLUSMICRO
 - PLUSPROT
 - MINUSPROT
 - MINUSMICRO
 - MINUSPFC
 - GND
 - IAC-
 - GND
 - LEM-
 - GND
 - GND
 - PILSURUP
 - GND
 - PILINVUP
 - PILSURDW
 - CBON
 - CBV
 - VOUTREG
 - VINVBIL
 - IOUT
 - IOUTR
 - /RELEINV
 - RELEINVKO
 - /RELEBYP
 - /RELEINGOPEN
 - VOUTCURPROT
 - RELEBYPKO
 - PILINVDW
 - /RELEBATON
 - VBYP
 - VOUT
 - VING
 - BT1
 - VBATMICRO
 - ONUPS
 - +8V
 - +13V
 - PIL_BACKLIGHT
 - GND
 - GND
 - 8V
 - 8V
 - KEY
 - /PWMVENT
 - TEMP1RT
 - +8V
 - TEMP1
 - TEMP2
 - TEMP2RT
 - K_BACKLIGHT
 - A_BACKLIGHT
 - GND
 - LEMINV
 - CONTAUS
 - +13VENT
 - /VENT
 - INT1
 - INT2
 - TEMP2RT
 - TEMP2
 - /PWMVENT
 - +13VENT
 - /VENT
 - INT1
 - INT2
 - +13V
 - +17VSURDW
 - 10VSURDW
 - +17VINVDW
 - 10VINVDW
 - +17VINVUP
 - 10VINVUP
 - 8V
 - CONTAUS
 - BATTBOX+
 - BATTBOX-
 - EINVVDW
 - GINVDW
 - GINVUP
 - EINVUP
 - SURUP
 - SURUP
 - +400V
 - +400V
 - GSURUP
 - ESURUP
 - BATTSURDW
 - BATTSURDW
 - GSURDW
 - ESURDW
 - NEUTRO
 - SURDW
 - SURDW
 - 400V
 - 400V
 - NEUTRO
 - SURUP
 - NEUTRO
 - TEMP1
 - TEMP1RT
 - BATTSURDW
 - NEUTRO
 - NEUTRO
 - SURDW

UPS MANUFACTURING S.r.l.		N.FOGLIO 1
Descrizione <i>Scheda di potenza MO4</i>		TOT. FOGLI 6
		CODICE DOCUMENTO E0003-04

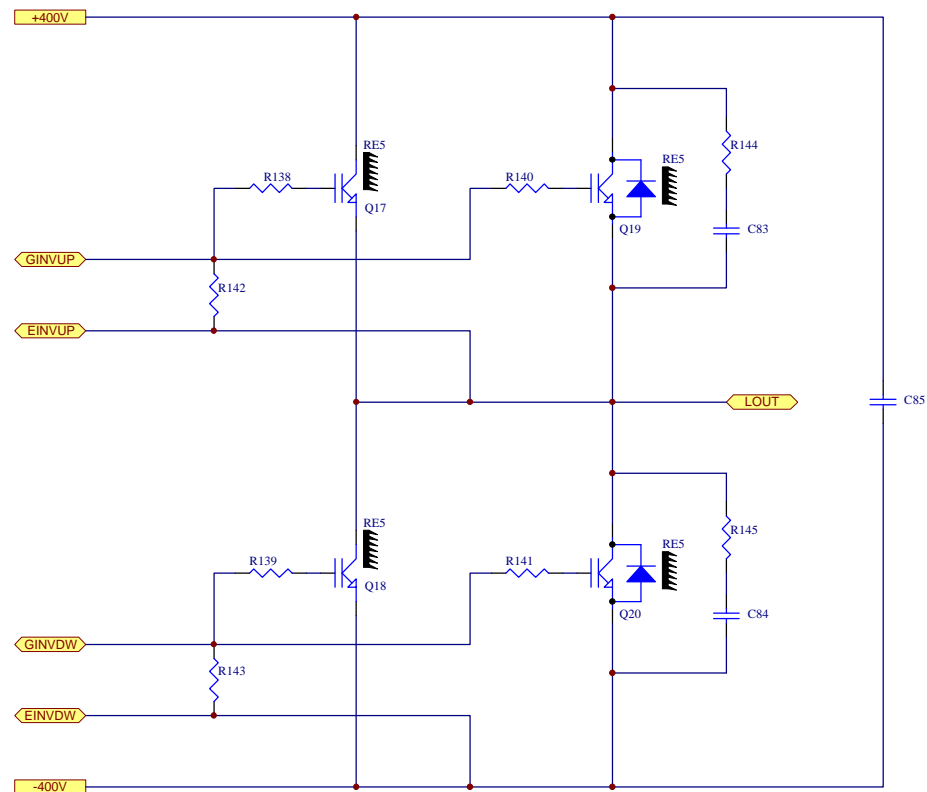
Rev.	Data	Descrizione modifica	Disegnatore	Approvato da
03	13/01/03	Prima versione	Federico Bonazzo	Nicola Degani
04	23/05/03	Aggiunti CX1 e CX2, sostituita resistenza con diodo in posizione R148	Simone Sandrini	Nicola Degani
05				
06				
07				
08				



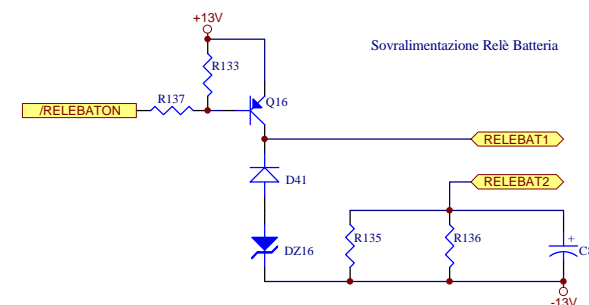
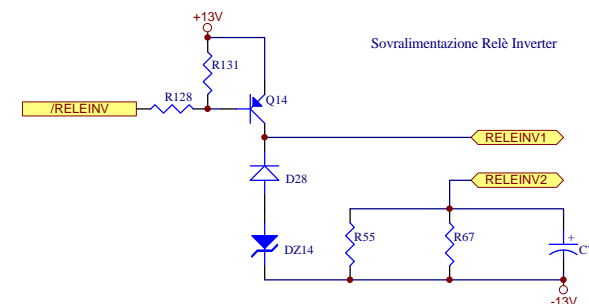
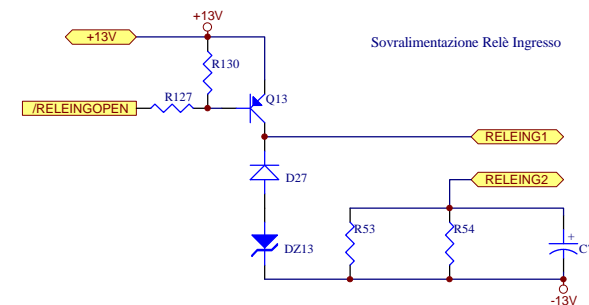
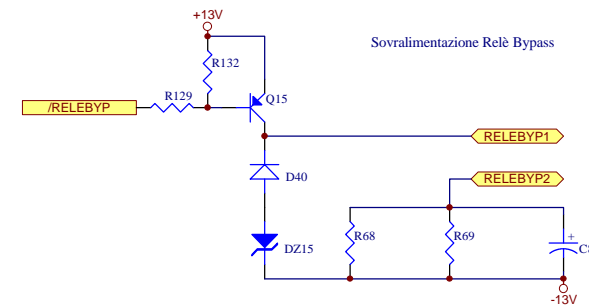
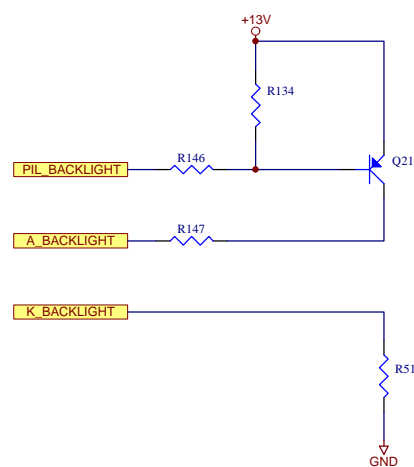
UPS MANUFACTURING S.r.l.		N.FOGLIO 2
Descrizione <i>Scheda potenza MO4</i>		TOT. FOGLI 6
		CODICE DOCUMENTO E0003-04

Rev.	Data	Descrizione modifica	Disegnatore	Approvato da
03	13/01/03	Prima versione	Federico Bonazzo	Nicola Degani
04	23/05/03	Aggiunti CX1 e CX2, sostituita resistenza con diodo in posizione R148	Simone Sandrini	Nicola Degani
05				
06				
07				
08				

STADIO INVERTER

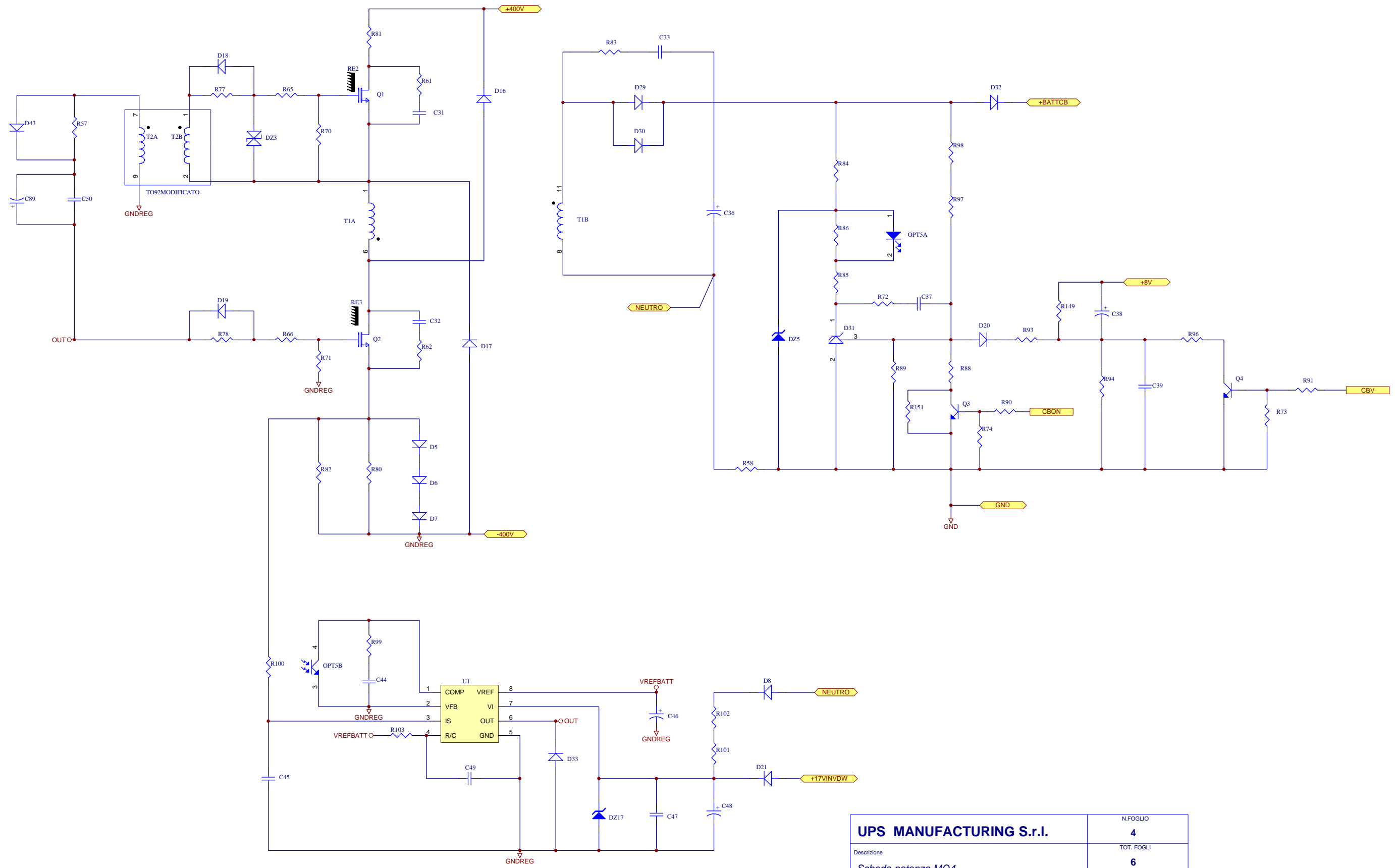


REGOLAZIONE BACKLIGHT



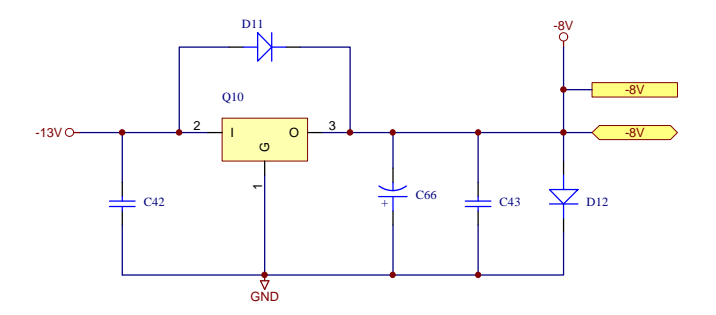
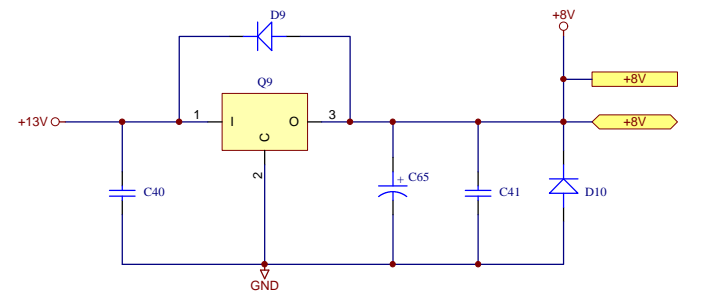
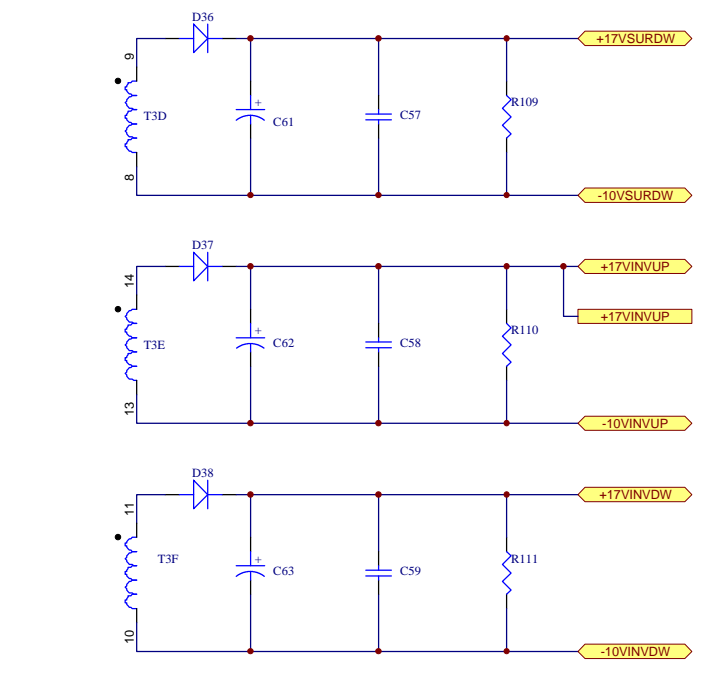
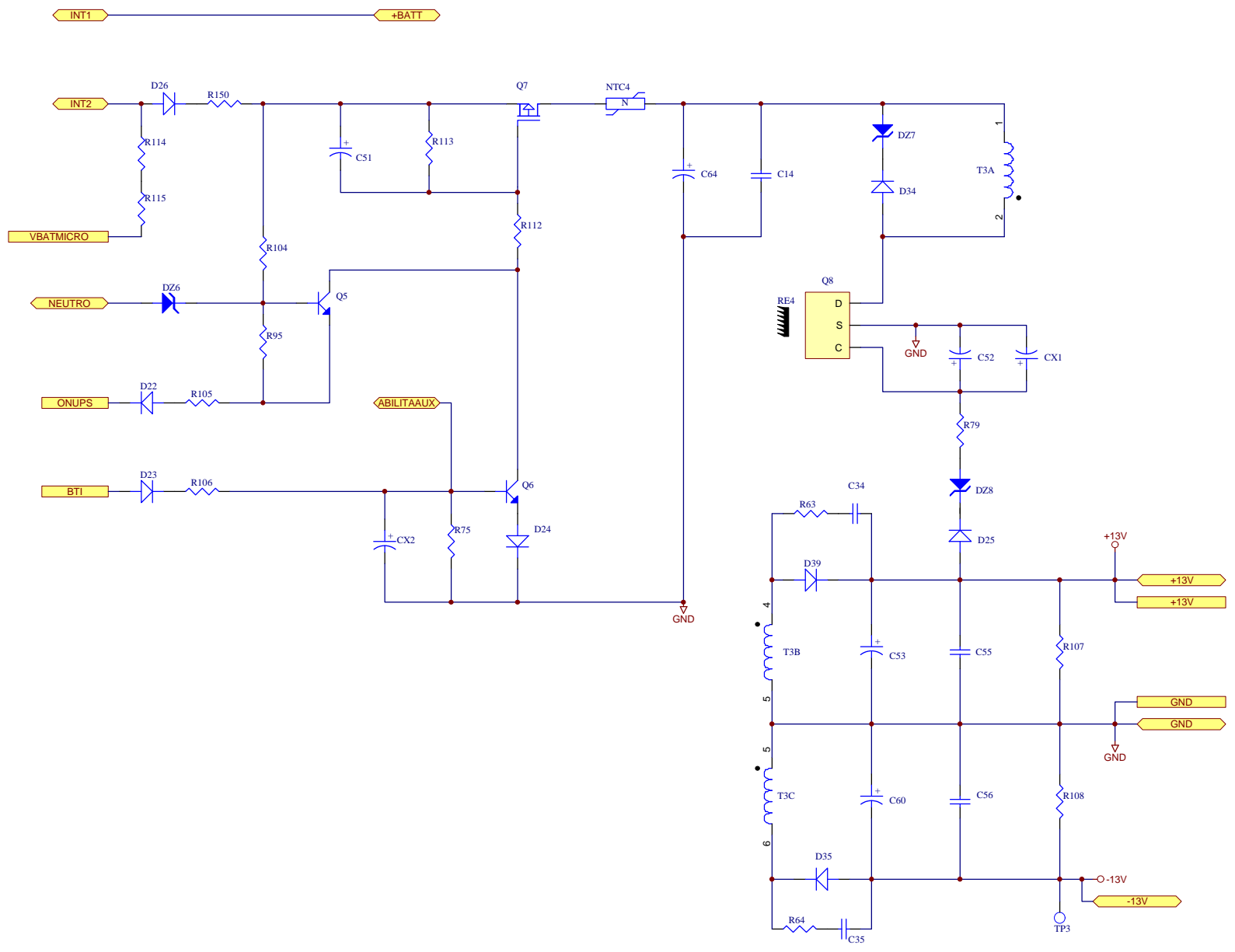
UPS MANUFACTURING S.r.l.		N.FOGLIO 3
Descrizione <i>Scheda potenza MO4</i>		TOT. FOGLI 6
		CODICE DOCUMENTO E0003-04

Rev.	Data	Descrizione modifica	Disegnatore	Approvato da
03	13/01/03	Prima versione	Federico Bonazzo	Nicola Degani
04	23/05/03	Aggiunti CX1 e CX2, sostituita resistenza con diodo in posizione R148	Simone Sandrini	Nicola Degani
05				
06				
07				
08				



UPS MANUFACTURING S.r.l.		N.FOGLIO
		4
Descrizione		TOT. FOGLI
<i>Scheda potenza MO4</i>		6
		CODICE DOCUMENTO
		E0003-04

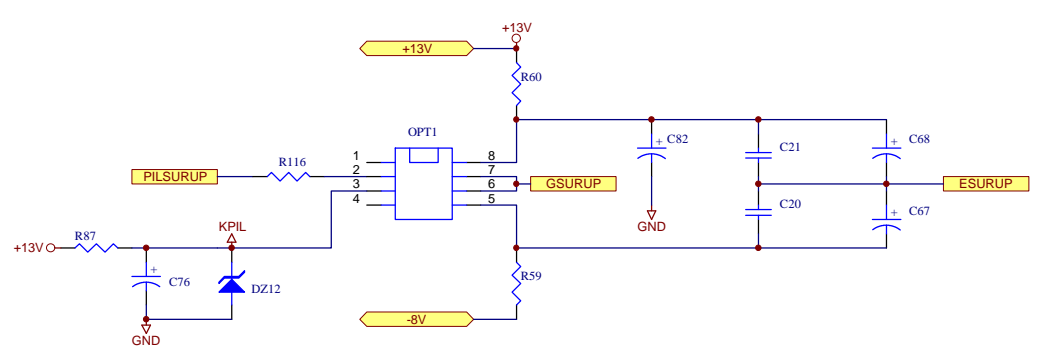
Rev.	Data	Descrizione modifica	Disegnatore	Approvato da
03	13/01/03	Prima versione	Federico Bonazzo	Nicola Degani
04	23/05/03	Aggiunti CX1 e CX2, sostituita resistenza con diodo in posizione R148	Simone Sandrini	Nicola Degani
05				
06				
07				
08				



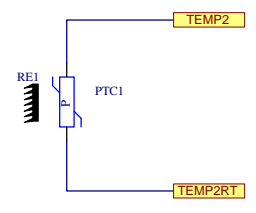
UPS MANUFACTURING S.r.l.		N. FOGLIO 5
Descrizione <i>Scheda potenza MO4</i>		TOT. FOGLI 6
		CODICE DOCUMENTO E0003-04

Rev.	Data	Descrizione modifica	Disegnatore	Approvato da
03	13/01/03	Prima versione	Federico Bonazzo	Nicola Degani
04	23/05/03	Aggiunti CX1 e CX2, sostituita resistenza con diodo in posizione R148	Simone Sandrini	Nicola Degani
05				
06				
07				
08				

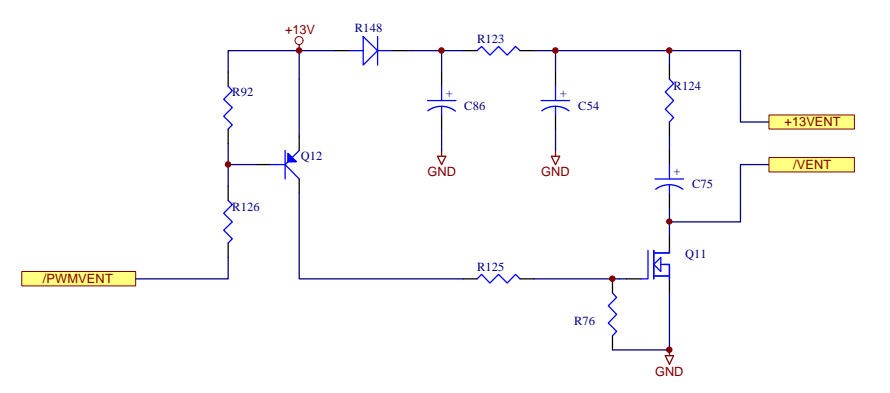
PILOTAGGI SURUP



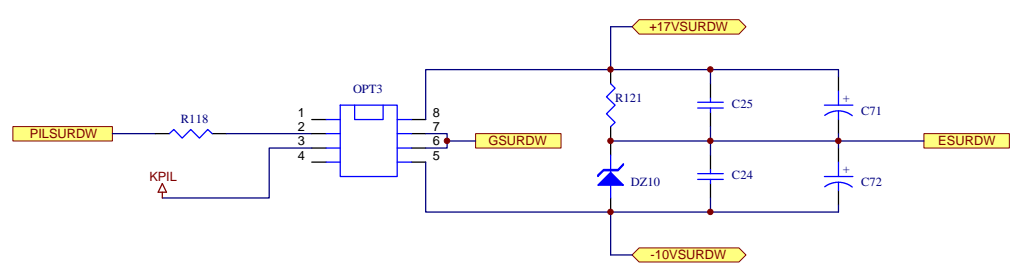
SENSORE TEMPERATURA PER DISS. BATTERIA



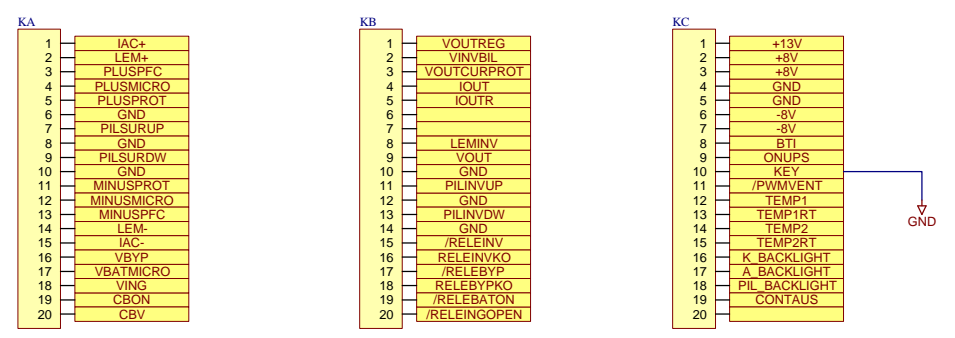
PILOTAGGIO ALIMENTAZIONI VENTOLE



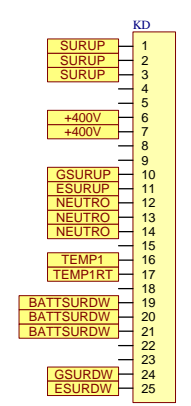
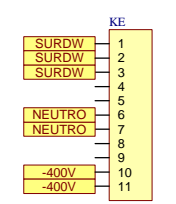
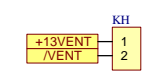
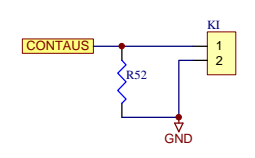
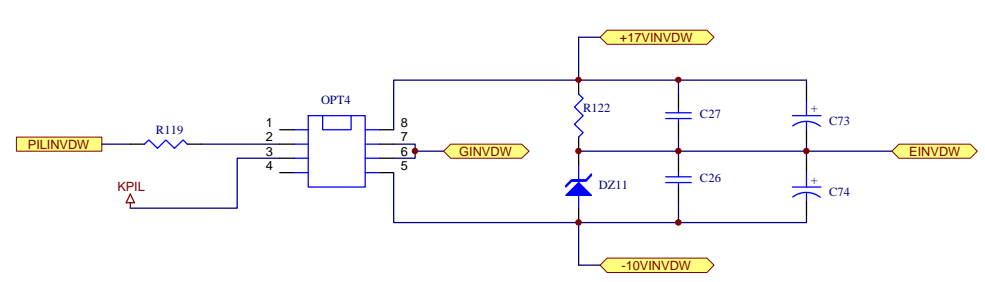
PILOTAGGI SURDW



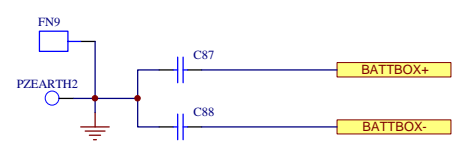
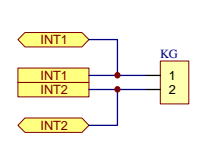
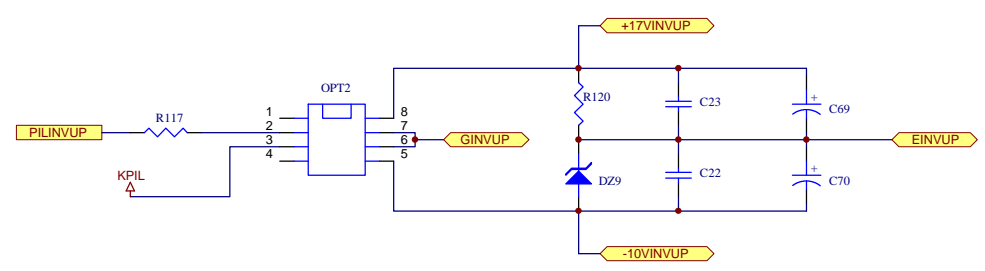
CONNETTORI



PILOTAGGI INVVDW



PILOTAGGI INVUP



UPS MANUFACTURING S.r.l.		N.FOGLIO 6
Descrizione Scheda potenza MO4		TOT. FOGLI 6
		CODICE DOCUMENTO E0003-04

Rev.	Data	Descrizione modifica	Disegnatore	Approvato da
03	13/01/03	Prima versione	Federico Bonazzo	Nicola Degani
04	23/05/03	Aggiunti CX1 e CX2, sostituita resistenza con diodo in posizione R148	Simone Sandrini	Nicola Degani
05				
06				
07				
08				