

Low Cost Green PWM Controlled Power Switch

One way to reduce system cost in the field of low power is to use low-cost power transistors (Power BJT), for which a highly integrated PWM controller for driving BJT is introduced: SL2128/2128C. The chip adopts optimized base current drive, and has built-in BJT drive capability, as well as internal frequency expansion 置 and various protection functions, so that system design can easily achieve high cost performance.

model	Applicable output power	On-off level	Switch tube Vcb	Stand-by power consumption	work protection mode	encapsulation
LY2117	18.0W	62KHz	>720V	<300mW	OVP SPP	DIP8
SL2128	18.0W	CT: 680PF 65KHz	>700V	<300mW	OVP SPP	DIP8
SL2128C	18.0W	65KHz	>700V	<300mW	OVP SPP	DIP8

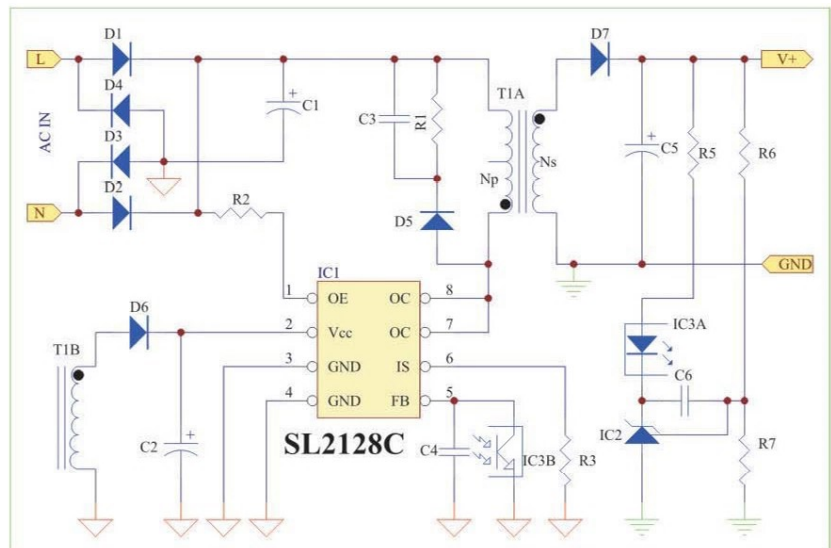
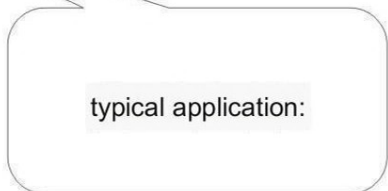
Features:

- Built-in 700V high-voltage power switch tube, very few peripheral devices
- Latch pulse width modulation, pulse-by-pulse current limit detection
- Low output frequency reduction function, no output power consumption can be lower than 0.3W Independent upper limit current detection controller, real-time processing controller
- overcurrent, overload built-in current limiting resistor with temperature compensation, accurate current limit using the amplification effect of switching power tube Complete start-up, the power consumption of the start-up resistor is reduced by more than 10 times Few peripheral components, low start-up and operating current,
- VCC overvoltage automatic limit Wide voltage continuous output power up to 15W, peak output
- Built-in CT capacitor. Solve the CT capacitor air welding fryer.
- power up to 18W Currently available in DIP8 package form , RoHS Compliant

Applications:

- Low power adapter
- Low power DVB, DVD power board

typical application:



低成本绿色PWM控制功率开关

在小功率领域降低系统成本的一种方式是使用低成本的功率三极管(Power BJT)，对此推出了高集成的驱动BJT的PWM控制器:SL2128/2128C。该芯片采用优化的基极电流驱动,并具有内置BJT 驱动能力,以及内置频率扩展和各种保护功能,使系统设计能够轻易实现高性价比。

型号	适用输出功率	开关频率	开关管 Vcb	待机功耗	工作保护模式	封装
LY2117	18.0W	62KHz	>720V	<300mW	OVP SPP	DIP8
SL2128	18.0W	CT:680PF 65KHz	>700V	<300mW	OVP SPP	DIP8
SL2128C	18.0W	65KHz	>700V	<300mW	OVP SPP	DIP8

特点:

- 内置700V高压功率开关管,极少的外围器件
- 锁存脉宽调制,逐脉冲限流检测
- 低输出降频功能,无输出功率可低于0.3W
- 独立上限电流检测控制器,实时处理控制器的过流、过载
- 内置具有温度补偿的电流限制电阻,精确电流限制
- 利用开关功率管的放大作用完成启动,启动电阻的功耗减少10倍以上
- 极少的外围元器件,低启动和工作电流,VCC过压自动限制
- 宽电压连续输出功率可达15W,峰值输出功率可达18W
- 内置CT电容。解决CT电容空焊炸机。
- 目前提供DIP8封装形式,符合RoHS标准

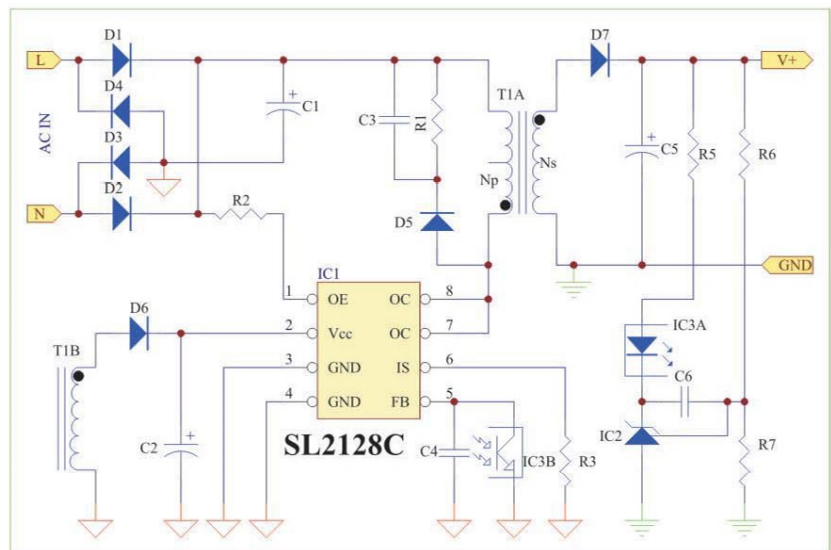
应用范围:

- 小功率适配器
- 小功率DVB、DVD电源板

典型应用:

典型应用:

www.DatasheetCatalog.com



Flyback PWM +BJT Switch Controller

Product Number	Max Pout (W)	Operation Frequency	BJT V _{bs}	Max V _{cc}	Standby Power	V _{cc} OVP/SVP	SPP	Package
LY2117	18.0W	62KHz	>720V	8.7V	<300mW	A	A	DIP8
SL2128	18.0W	CT:680PF 65KHz	>700V	8.8V	<300mW	A	A	DIP8
SL2128C	18.0W	65KHz	>700V	8.8V	<300mW	A	A	DIP8

Primary Side Regulation Power Switch Controller

Product Number	Max Oper. Frequency	MOSFET V _{ds}	R _{ds(on)}	Max V _{dd}	Frequency Shuffling	Standby Power	CV	CC	Cable compensation	Inductance compensation	Power on Soft-start	VDD OVP	OLP /SCP	Package
LY1043	65KHz	>600V	9.0 Ω	26V	Y	<200mW	5%	5%	Y	Y	Y	A	A	DIP8
LY1045	65KHz	>600V	5.0 Ω	26V	Y	<200mW	5%	5%	Y	Y	Y	A	A	DIP8
LY1046	65KHz	>600V	4.4 Ω	26V	Y	<200mW	5%	5%	Y	Y	Y	A	A	DIP8
LY1047	65KHz	>600V	3.3 Ω	26V	Y	<200mW	5%	5%	Y	Y	Y	A	A	DIP8
LY1048	65KHz	>600V	2.2 Ω	26V	Y	<300mW	5%	5%	Y	Y	Y	A	A	DIP8

www.DatasheetCatalog.com

Product Number	Max Oper. Frequency	MOSFET V _{ds}	R _{ds(on)}	Max V _{dd}	Frequency Shuffling	Standby Power	CV	CC	Cable compensation	Inductance compensation	Power on Soft-start	VDD OVP	OLP /SCP	Package
SL2903	55KHz	>600V	12.0 Ω	26V	Y	<200mW	5%	10%	Y	Y	Y	A	A	SOP8
SL2909	55KHz	>600V	9.0 Ω	26V	Y	<200mW	5%	10%	Y	Y	Y	A	A	DIP8
SL2911	55KHz	>600V	5.0 Ω	26V	Y	<200mW	5%	10%	Y	Y	Y	A	A	DIP8
SL2912	55KHz	>600V	3.3 Ω	26V	Y	<300mW	5%	10%	Y	Y	Y	A	A	DIP8
SL2917	55KHz	>600V	2.2 Ω	26V	Y	<300mW	5%	10%	Y	Y	Y	A	A	DIP8

Product Number	Max Oper. Frequency	BJT V _{cb}	Max V _{dd}	Frequency Shuffling	Standby Power	CV	CC	Cable compensation	Inductance compensation	Power on Soft-start	VDD OVP	OLP /SCP	Package
LY2973	100KHz	>700V	25V	Y	<100mW	5%	10%	Y	Y	Y	A	A	SOP8
LY2975	100KHz	>700V	25V	Y	<100mW	5%	10%	Y	Y	Y	A	A	SOP8
LY2976	100KHz	>700V	25V	Y	<100mW	5%	10%	Y	Y	Y	A	A	DIP8
LY2977	100KHz	>700V	25V	Y	<100mW	5%	10%	Y	Y	Y	A	A	DIP8
LY2978	100KHz	>700V	25V	Y	<100mW	5%	10%	Y	Y	Y	A	A	DIP8