



# Service Manual

## PARTYBOX 110

### Party Speaker

**SKU:** JBLPARTYBOX110AM, JBLPARTYBOX110CN, JBLPARTYBOX110AS, JBLPARTYBOX110EU,  
JBLPARTYBOX110IN, JBLPARTYBOX110UK, JBLPARTYBOX110JN, JBLPARTYBOX110BR, JBLPARTYBOX110RU



## CONTENTS

|  |    |
|--|----|
| Safety Instruction . . . . .                             | 2  |
| Technical Specifications . . . . .                       | 5  |
| Software upgrade Instruction & Reset Procedure . . . . . | 6  |
| Troubleshooting Charts . . . . .                         | 7  |
| Disassembly Instruction . . . . .                        | 8  |
| Block Diagram. . . . .                                   | 16 |
| Wiring Diagram . . . . .                                 | 18 |
| Circuit Diagrams & PCBA Layout . . . . .                 | 19 |
| Mechanical Exploded View.....                            | 41 |
| Spare Parts List ... . . . .                             | 42 |
| S/N Modification Instructions . . . . .                  | 44 |
| Revision List . . . . .                                  | 49 |

## Important Safety Instructions

1. Read these instructions.
2. Keep these instructions.
3. Heed all warnings.
4. Follow all instructions.
5. Do not use this apparatus near water.
6. Clean only with a dry cloth.
7. Do not block any ventilation openings. Install in accordance with the manufacturer's instructions.
8. Do not install near any heat sources such as radiators, heat registers, stoves or other apparatus (including amplifiers) that produce heat.
9. Do not defeat the safety purpose of the polarized or grounding-type plug. A polarized plug has two blades with one wider than the other. A grounding-type plug has two blades and a third grounding prong. The wide blade or the third prong is provided for your safety. If the provided plug does not fit into your outlet, consult an electrician for replacement of the obsolete outlet.
10. Protect the power cord from being walked on or pinched, particularly at plugs, convenience receptacles and the point where they exit from the apparatus.
11. Only use attachments/accessories specified by the manufacturer.
12. Use only with the cart, stand, tripod, bracket or table specified by the manufacturer or sold with the apparatus. When a cart is used, use caution when moving the cart/apparatus combination to avoid injury from tip-over.
13. Unplug this apparatus during lightning storms or when unused for long periods of time.
14. Refer all servicing to qualified service personnel. Servicing is required when the apparatus has been damaged in any way, such as power supply cord or plug is damaged, liquid has been spilled or objects have fallen into the apparatus, or the apparatus has been exposed to rain or moisture, does not operate normally or has been dropped.
15. Do not expose this apparatus to dripping or splashing and ensure that no objects filled with liquids, such as vases, are placed on the apparatus.
16. To completely disconnect this apparatus from the AC Mains, disconnect the power supply cord plug from the AC receptacle.
17. The mains plug of the power supply cord shall remain readily operable.
18. Do not expose batteries to excessive heat such as sunshine, fire or the like.



## For Products That Transmit and Receive RF Energy:

### FCC Regulations (USA Only)

### FCC Information For Users

This device complies with Part 15 of the FCC Rules. Operation is subject to the following two conditions: (1) This device may not cause harmful interference; and (2) this device must accept any interference received, including interference that may cause undesired operation.

### Radio and Television Interference

This equipment has been tested and found to comply with the limits for a Class B digital device, pursuant to Part 15 of the FCC Rules. These limits are designed to provide reasonable protection against harmful interference in a residential installation. This equipment generates, uses and can radiate radio frequency energy and, if not installed and used in accordance with the instructions, may cause harmful interference to radio communications. However, there is no guarantee that interference will not occur in a particular installation. If this equipment does cause interference to radio or television reception, which can be determined by turning the equipment off and then on, the user is encouraged to try to correct the interference by one or more of the following measures:

- Increase the separation between the equipment and receiver.
- Connect the equipment to a different outlet so that the equipment and receiver are on different branch circuits.
- Consult the dealer or an experienced radio/TV technician for help.

NOTE: Changes or modifications not expressly approved by Harman could void the user's authority to operate the equipment.

### IC Statement and Warning (Canada Only)

This Class B digital apparatus complies with Canadian ICES-003. Cet appareil numérique de la classe B est conforme à la norme NMB-003 du Canada.

### For Canadian Model

This Class B digital apparatus complies with Canadian ICES-003.

### Modèle pour les Canadien

Cet appareil numérique de la classe B est conforme à la norme NMB-003 du Canada.

## For Products with Radio Receivers That Can Use an External Antenna:

### CATV or Antenna Grounding

If an outside antenna or cable system is connected to this product, be certain that it is grounded so as to provide some protection against voltage surges and static charges. Section 810 of the National Electrical Code, ANSI/NFPA No. 70-1984, provides information with respect to proper grounding of the mast and supporting structure, grounding of the lead-in wire to an antenna discharge unit, size of grounding conductors, location of antenna discharge unit, connection to grounding electrodes and requirements of the grounding electrode.

### Note to CATV System Installer:

This reminder is provided to call the CATV (cable TV) system installer's attention to article 820-40 of the NEC, which provides guidelines for proper grounding and, in particular, specifies that the cable ground shall be connected to the grounding system of the building, as close to the point of cable entry as possible.

### For CD/DVD/Blu-ray Disc™ Players:

CLASS 1 LASER PRODUCT  
KLASSE 1 LASER PRODUKT  
LUOKAN 1 LASER LAITE  
KLASS 1 LASER APPARAT  
CLASSE 1 PRODUIT LASER

## CAUTION

RISK OF ELECTRIC SHOCK. DO NOT OPEN.



THE LIGHTNING FLASH WITH AN ARROWHEAD SYMBOL, WITHIN AN EQUILATERAL TRIANGLE, IS INTENDED TO ALERT THE USER TO THE PRESENCE OF UNINSULATED "DANGEROUS VOLTAGE" WITHIN THE PRODUCT'S ENCLOSURE THAT MAY BE OF SUFFICIENT MAGNITUDE TO CONSTITUTE A RISK OF ELECTRIC SHOCK TO PERSONS.



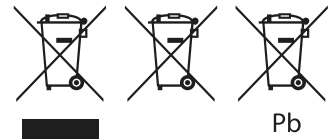
THE EXCLAMATION POINT WITHIN AN EQUILATERAL TRIANGLE IS INTENDED TO ALERT THE USER TO THE PRESENCE OF IMPORTANT OPERATING AND MAINTENANCE (SERVICING) INSTRUCTIONS IN THE LITERATURE ACCOMPANYING THE PRODUCT.

WARNING: TO REDUCE THE RISK OF FIRE OR ELECTRIC SHOCK, DO NOT EXPOSE THIS APPARATUS TO RAIN OR MOISTURE.

### Caution:

This product uses a laser system. To prevent direct exposure to the laser beam, do not open the cabinet enclosure or defeat any of the safety mechanisms provided for your protection. DO NOT STARE INTO THE LASER BEAM. To ensure proper use of this product, please read the owner's manual carefully and retain it for future use. Should the unit require maintenance or repair, please contact your local Harman Kardon service center. Refer servicing to qualified personnel only.

### For Products That Include Batteries:



Instructions for Users on Removal and Disposal of Used Batteries.

### CAUTION

Risk of explosion if battery is incorrectly replaced. Replace only with the same or equivalent type.

Alkaline batteries are considered nonhazardous. Rechargeable batteries (i.e., nickel cadmium, nickel metal-hydride, lithium and lithium-ion) are considered hazardous household materials and may pose an unnecessary health and safety risk.

In the European Union and other locations, it is illegal to dispose of any battery with household trash. All batteries must be disposed of in an environmentally sound manner. Contact your local waste management officials for information regarding the environmentally sound collection, recycling and disposal of used batteries.

To remove the batteries from your equipment or remote control, reverse the procedure described for inserting batteries in the owner's manual.

For products with a built-in battery that lasts for the lifetime of the product, removal may not be possible for the user. In this case, recycling or recovery centers handle the dismantling of the product and the removal of the battery. If, for any reason, it becomes necessary to replace such a battery, this procedure must be performed by authorized service centers.

## ELECTROSTATICALLY SENSITIVE(ES) DEVICES

Some semiconductor (solid state) devices can be damaged easily by static electricity. Such components commonly are called Electrostatically Sensitive (ES) Devices. Examples of typical ES devices are integrated circuits and some field effect transistors and semiconductor "chip" components.

The following techniques should be used to help reduce the incidence of component damage caused by static electricity.



1. Immediately before handling any semiconductor component or semiconductor-equipped assembly, drain off any electrostatic charge on your body by touching a known earth ground. Alternatively, obtain and wear a commercially available discharging wrist strap device, which should be removed for potential shock reasons prior to applying power to the unit under test.
2. After removing an electrical assembly equipped with ES devices, place the assembly on a conductive surface such as aluminum foil, to prevent electrostatic charge build-up or exposure of the assembly.
3. Use only a grounded-tip soldering iron to solder or unsolder ES devices.
4. Use only an anti-static solder removal device. Some solder removal devices not classified as "anti-static" can generate electrical charges sufficient to damage ES devices.
5. Do not use freon-propelled chemicals. These can generate electrical charge sufficient to damage ES devices.
6. Do not remove a replacement ES device from its protective package until immediately before you are ready to install it. (Most replacement ES devices are packaged with leads electrically shorted together by conductive foam, aluminum foil or comparable conductive material.)
7. Immediately before removing the protective material from the leads of a replacement ES device, touch the protective material to the chassis or circuit assembly into which the device will be installed.

**CAUTION** : Be sure no power is applied to the chassis or circuit, and observe all other safety precautions.

8. Minimize bodily motions when handling unpackaged replacement ES devices. (Otherwise harmless motion such as the brushing together or your clothes fabric or the lifting of your foot from a carpeted floor can generate static electricity sufficient to damage an ES devices.

## POODUCT SAFETY NOTICE

Each precaution in this manual should be followed during servicing.

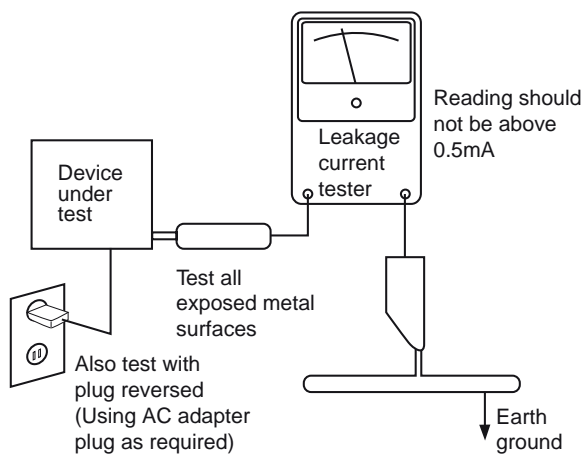
Components identified with the IEC symbol  in the parts list are special significance to safety. When replacing a component identified with , use only the replacement parts designated, or parts with the same ratings or resistance, wattage, or voltage that are designated in the parts list in this manual. Leakage-current or resistance measurements must be made to determine that exposed parts are acceptably insulated from the supply circuit before returning the product to the customer.

## SAFETY PRECAUTIONS

The following check should be performed for the continued protection of the customer and service technician.

### LEAKAGE CURRENT CHECK

Measure leakage current to a known earth ground (water pipe, conduit, etc.) by connecting a leakage current tester between the earth ground and all exposed metal parts of the appliance (input/output terminals, screwheads, metal overlays, control shaft, etc.). Plug the AC line cord of the appliance directly into a 120V AC 60Hz outlet and turn the AC power switch on. Any current measured must not exceed 0.5mA.



AC Leakage Test

ANY MEASUREMENTS NOT WITHIN THE LIMITS OUTLINED ABOVE ARE INDICATIVE OF A POTENTIAL SHOCK HAZARD AND MUST BE CORRECTED BEFORE RETURNING THE APPLIANCE TO THE CUSTOMER.

**General Specification**

Model No.: JBL PartyBox 110

Transducers: 2 x 154.6 mm / 5.25" woofer, 2 x 55 mm / 2.25" tweeter

Output power: 160 W RMS

Power input: 100 V - 240 V / 50/60 Hz

Frequency response: 45 Hz - 20 kHz (-6 dB)

Signal-to-noise ratio: > 80 dB

Battery type: Li-ion polymer 36 Wh

Battery charge time: 3.5 hours

\*Music play time: Up to 12 hours

**USB specification**

USB format: FAT16, FAT32

USB file format: .mp3, .wma, .wav

USB charge out: 5 V / 2.1 A (maximum)

Cable type: AC Power Cable

Cable length: 2000 mm / 78.7"

**Wireless specification**

Bluetooth® version: 5.1

Bluetooth® profile: A2DP 1.3, AVRCP 1.6

Bluetooth® transmitter frequency range: 2.4 GHz - 2.4835 GHz

Bluetooth® transmitter power: ≤ 15 dBm (EIRP)

Bluetooth® transmitter modulation: GFSK,  $\pi/4$  DQPSK, 8DPSK

**Dimensions**

Dimensions (W x H x D): 295 mm x 568 mm x 300 mm / 11.6" x 22.4" x 11.8"

Weight: 10.84 kg / 23 lbs

# Software upgrade Guide

1. Copy Software to USB
2. Set Power On
3. Press and hold Play & Bluetooth button over 10s at the same time, Set will be enter DFU mode and LED show Red Color
4. insert USB, then Set will start auto update
5. Main SOC and DSP Software will be updated. Top pannel LED will be blinking and Front LED will be all Off
6. Bluetooth Software will be updated.Top pannel LED will be all off and Front LED show white for percentage as follow
- 7.LED Show Green indication update finished , Please pull out USB, set will auto power off and on again

**TROUBLE SHOOTING**

| TROUBLE                               | CHECKING POINTS                  |
|---------------------------------------|----------------------------------|
| SPEAKER SYSTEM NO SOUND,NOT WORKING   | THE MAIN BOARD IN THE TOWER NG   |
|                                       | THE WIRE IN THE TOWER CONNECT NG |
|                                       | THE SPEAKER NG                   |
|                                       | THE AC SOCKET IS NG              |
|                                       | THE POWER BOARD IS NG            |
| SPEAKER SYSTEM CAN NOT CONNECT THE BT | THE BT ANTENNA IS NOT GOOD       |
|                                       | THE BT MODULE IS NOT GOOD        |
|                                       | THE MAIN BOARD NG                |
| THE KEY NOT WORK                      | THE KEY CONNECT WIRE NG          |
|                                       | THE KEY BOARD NG                 |
|                                       | THE MAIN BOARD NG                |
|                                       |                                  |
|                                       |                                  |

**Dismantling Video link as below :**

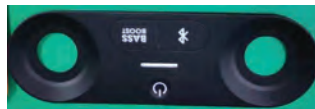
[https://teams.harman.com/div/lifestyle/Quality/LifestyleAudio/quality/\\_layouts/15/Lightbox.aspx?url=https%3A%2F%2Fteams.harman.com%2Fdiv%2Flifestyle%2FQuality%2FlifestyleAudio%2Fquality%2Ffile%2520Sharing1%2FService%2FDismantling%2520Instruction%2FJBL%2520Partybox%2520110%2520Disassembly%2520Instructions.mp4](https://teams.harman.com/div/lifestyle/Quality/LifestyleAudio/quality/_layouts/15/Lightbox.aspx?url=https%3A%2F%2Fteams.harman.com%2Fdiv%2Flifestyle%2FQuality%2FlifestyleAudio%2Fquality%2Ffile%2520Sharing1%2FService%2FDismantling%2520Instruction%2FJBL%2520Partybox%2520110%2520Disassembly%2520Instructions.mp4)

**PARTYBOX110 Disassembly Instructions**

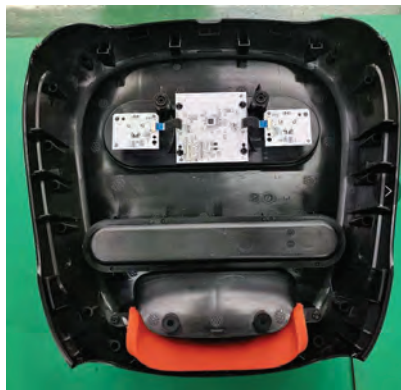
- 1、 Remove BUTTON COVER \*2、 KNOB BRACKET\*2、 SIDE FOOT\*2、 and PC Sheet



- 2、 Remove CONTROL PANEL

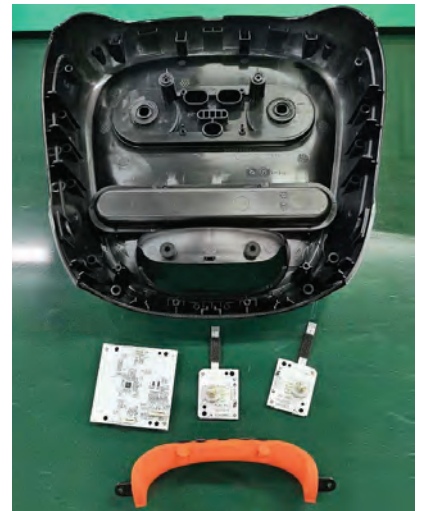


- 3、 Loosen screw \*8, remove the TOP COVER ASSEMBLY

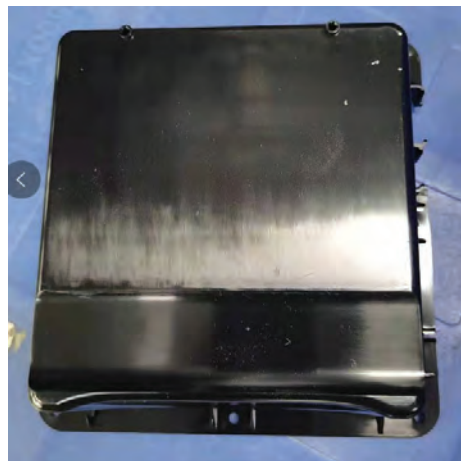




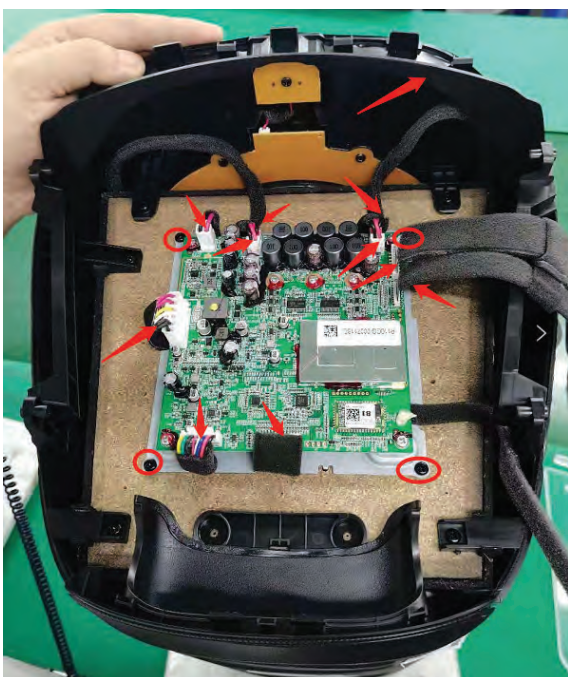
4、 Loosen the screw \*8、 Nut\*2 and gasket\*2, remove Key BOARD and the HANDLE ASSEMBLY



5、 Loosen screw \*14 , and remove the SEAL BOX of Main Board



6、 Pull out the wire\*11 and loosen the screw \*4, remove MAIN BOARD



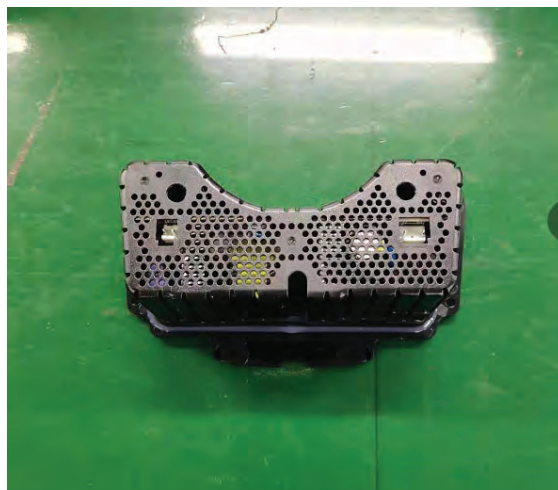
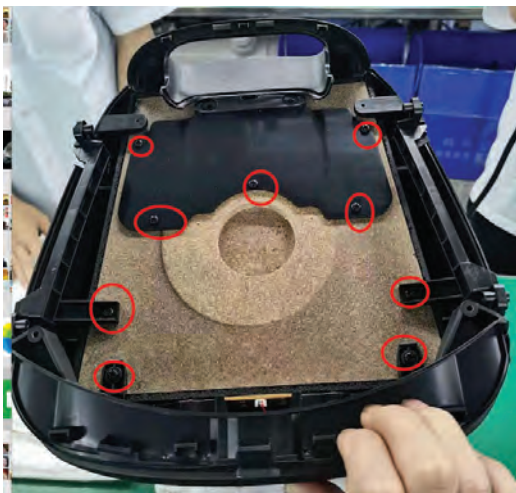
7、 Remove the FOOT\*4、 SIDE FOOT\*2、 PC SHEET 、and the BOTTOM COVER PLATE



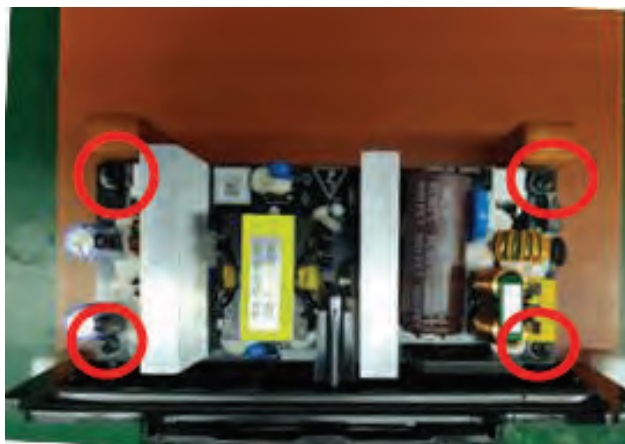
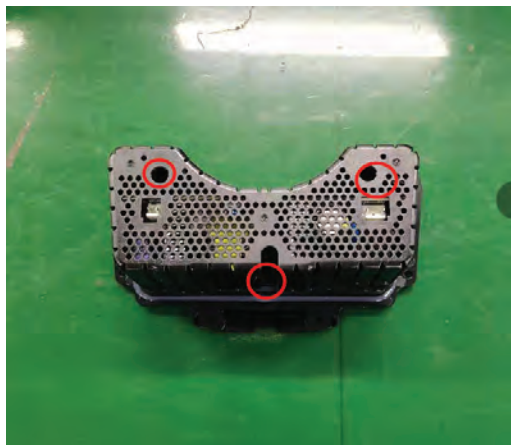
8、 Loosen the screw \*13 and RUBBER PLUG\*3 , remove BOTTOM COVER ASSEMBLY



9、 Loosen the screw \*9, remove POWER BOARD ASSEMBLY



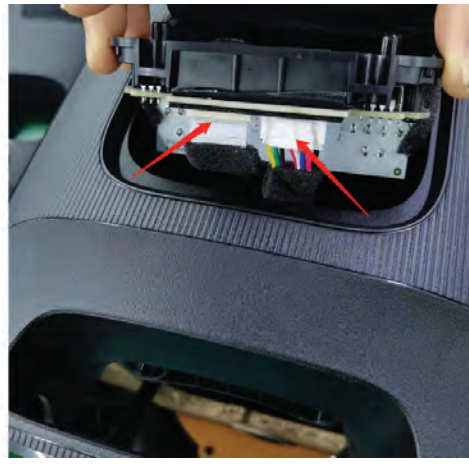
10、 Loosen screw \*7, remove POWER BOARD 、 POWER BOARD BRACKET and PROTECTIVE BOX



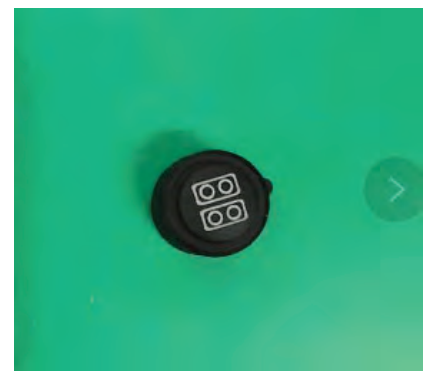
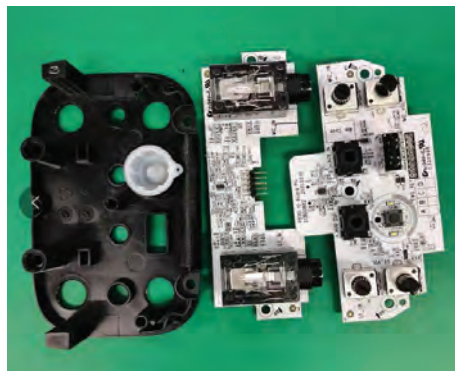
11、 Remove KNOB\*2 and PC SHEET



12、 Loosen screw \*4 and disconnect the wire\*2, remove IO BOARD ASSEMBLY



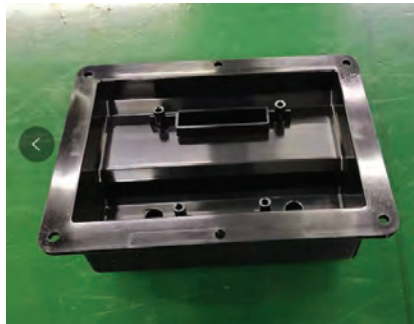
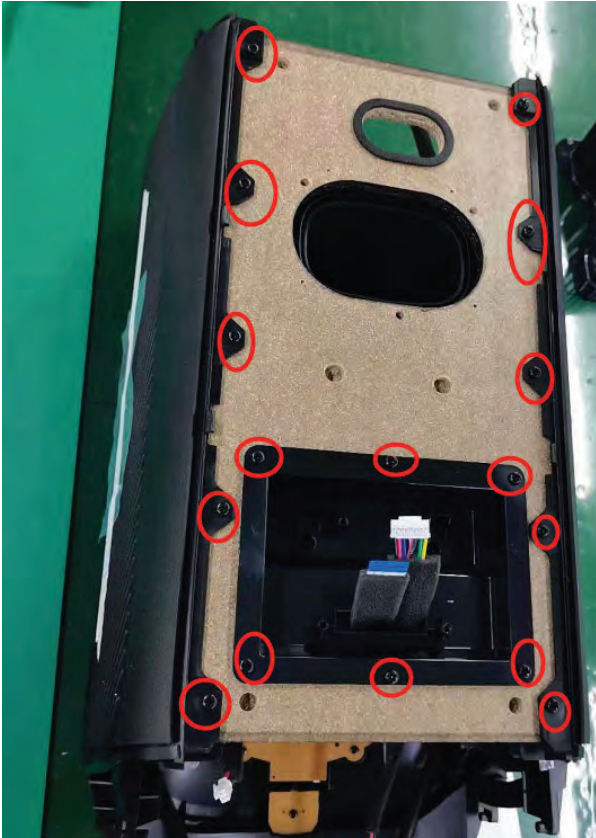
13、 Loosen screw \*5 , remove IO BOARD 、 IO COVER PLATE and the TWS BUTTON



14、 Remove REAR HOUSING



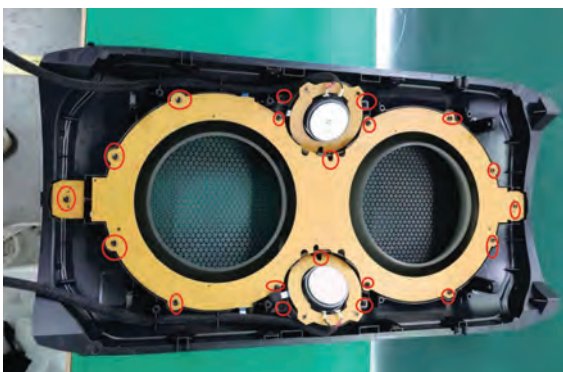
15、 Loosen screw \*16, remove SIDE COVER L/R and IO SEAL BOX



16、 Loosen screw \*4(Two side), move FRONT HOUSING ASSEMBLY



17、 Loosen screw \*20, remove RGB BOARD ASSEMBLY、TWEETER ASSEMBLY \*2 and LENS\*2



17、 Loosen screw \*4, remove RING



19、 Loosen screw \*22, remove WOOFER\*2 and TWEETER BRACKET\*2



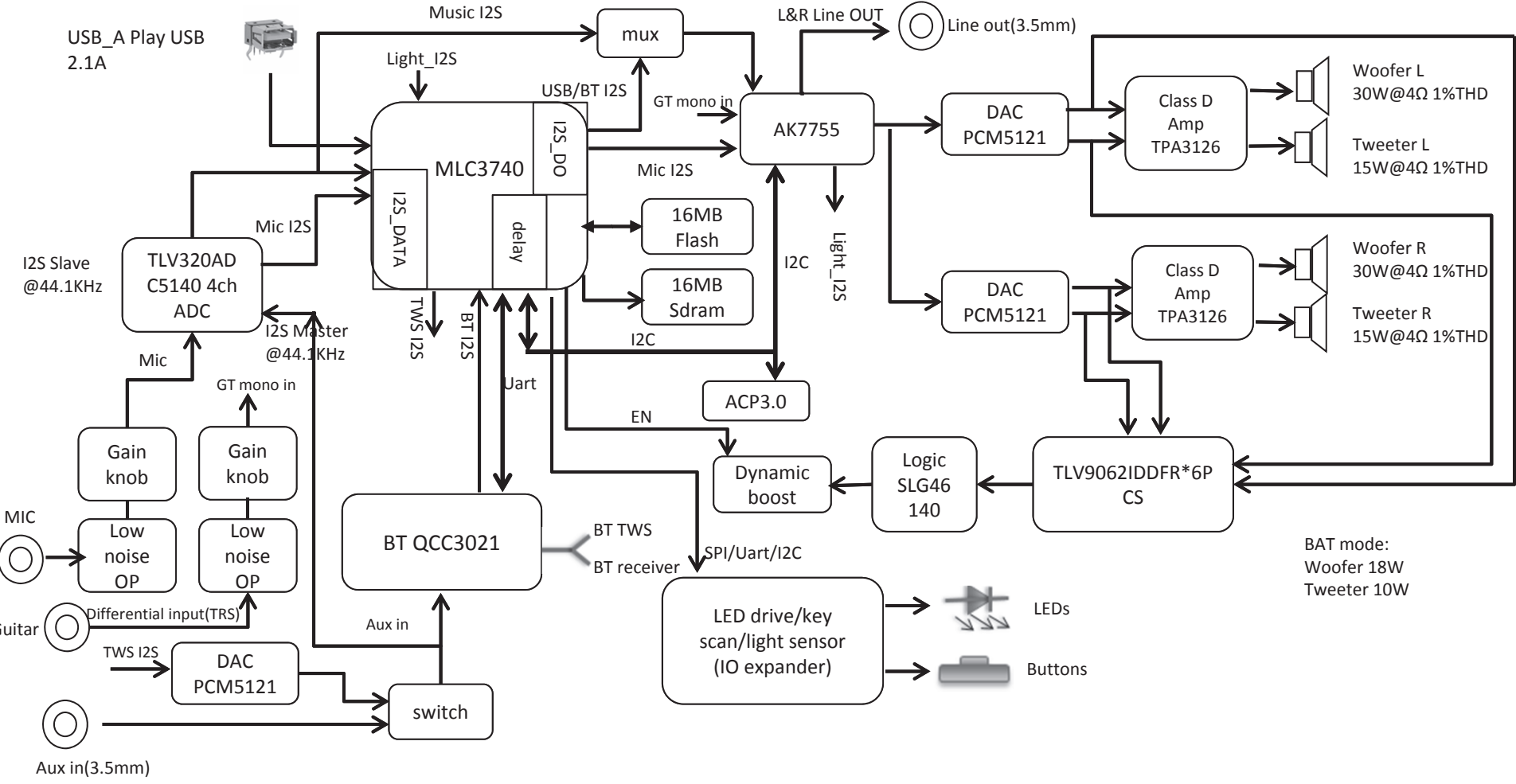
20、 Loosen screw \*4, remove BATTERY



21、 Loosen screw \*5, remove REAR HOUSING 、 AC POWER SEAL COVER、 IO SEAL COVER ASSEMBLY、 AC POWER CABLE ASSEMBLY and the AC POWER BRACKET

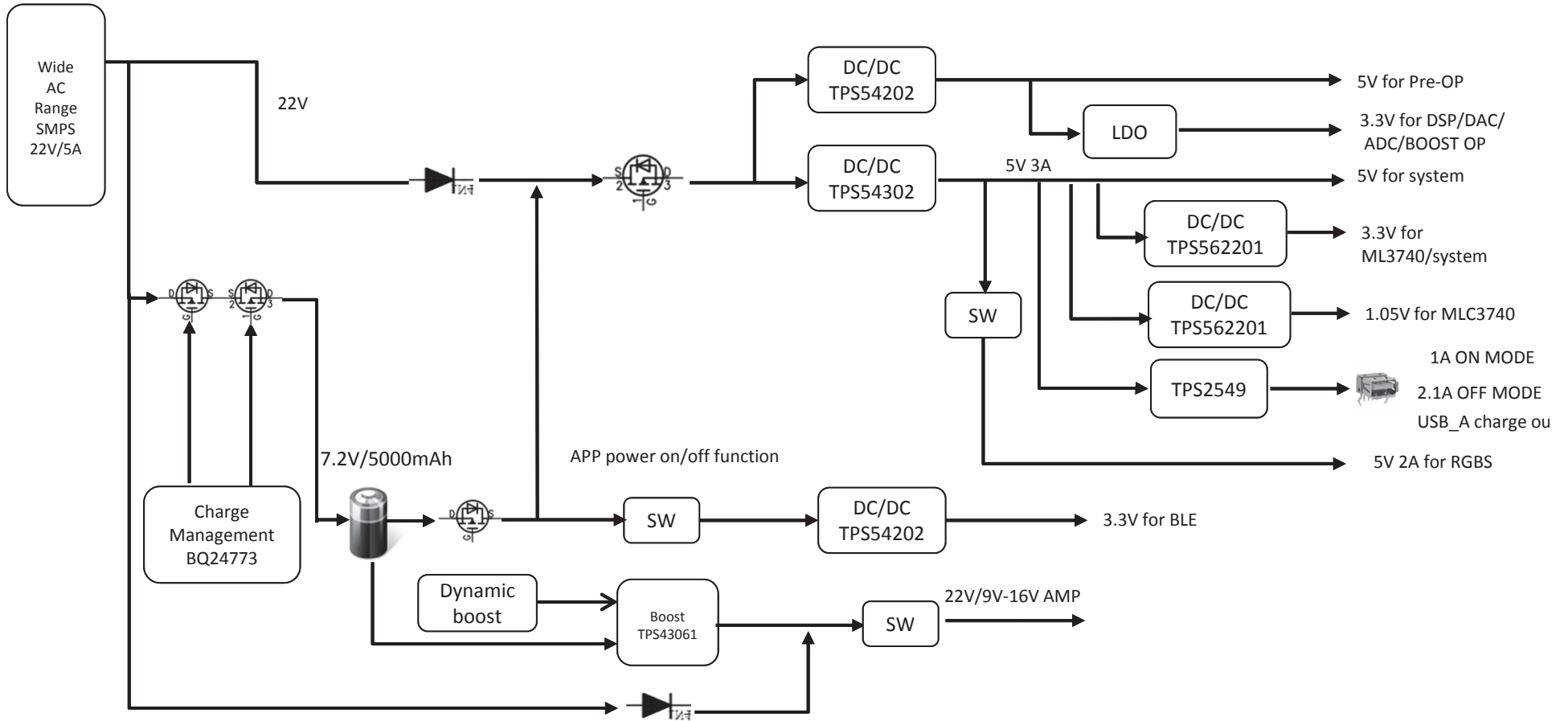


# Party Box 110 BLOCK DIAGRAM

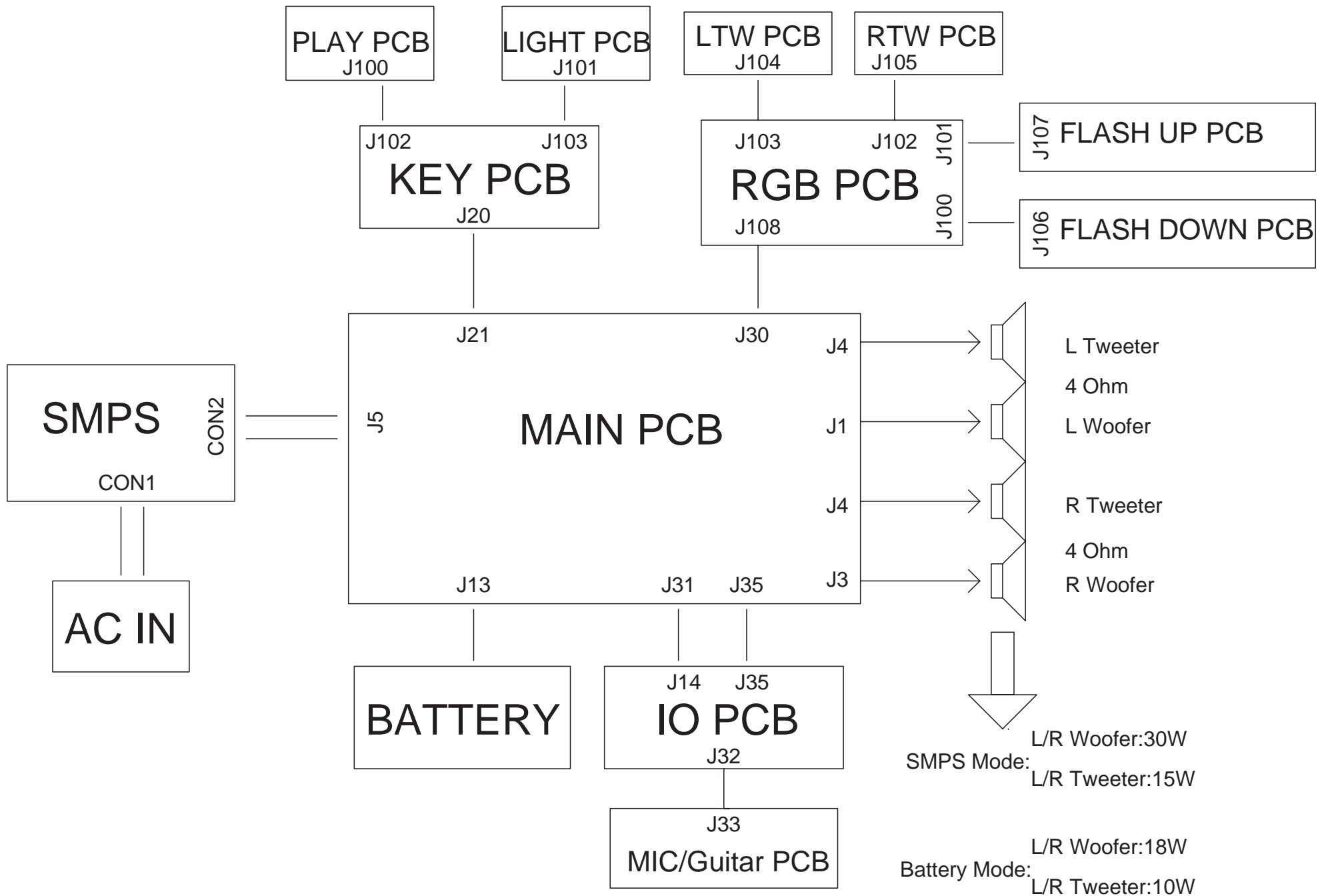




# Party Box 110 BLOCK DIAGRAM

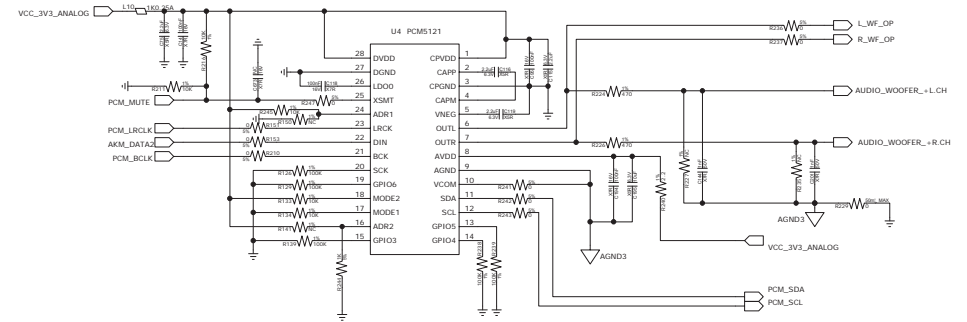
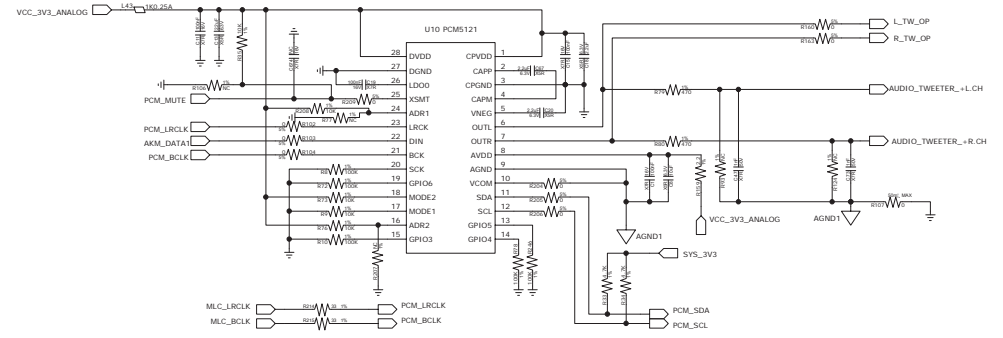
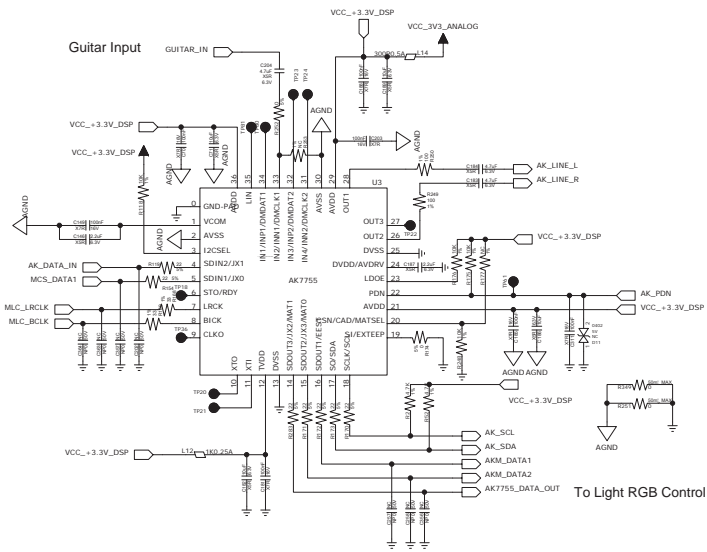
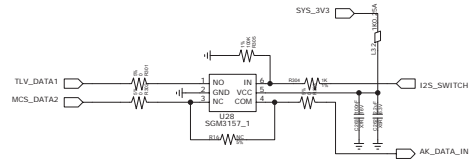


# Party Box 110 Wiring Diagram





MAIN BOARD



6

5

4

3

2

1

MAIN BOARD

D

D

C

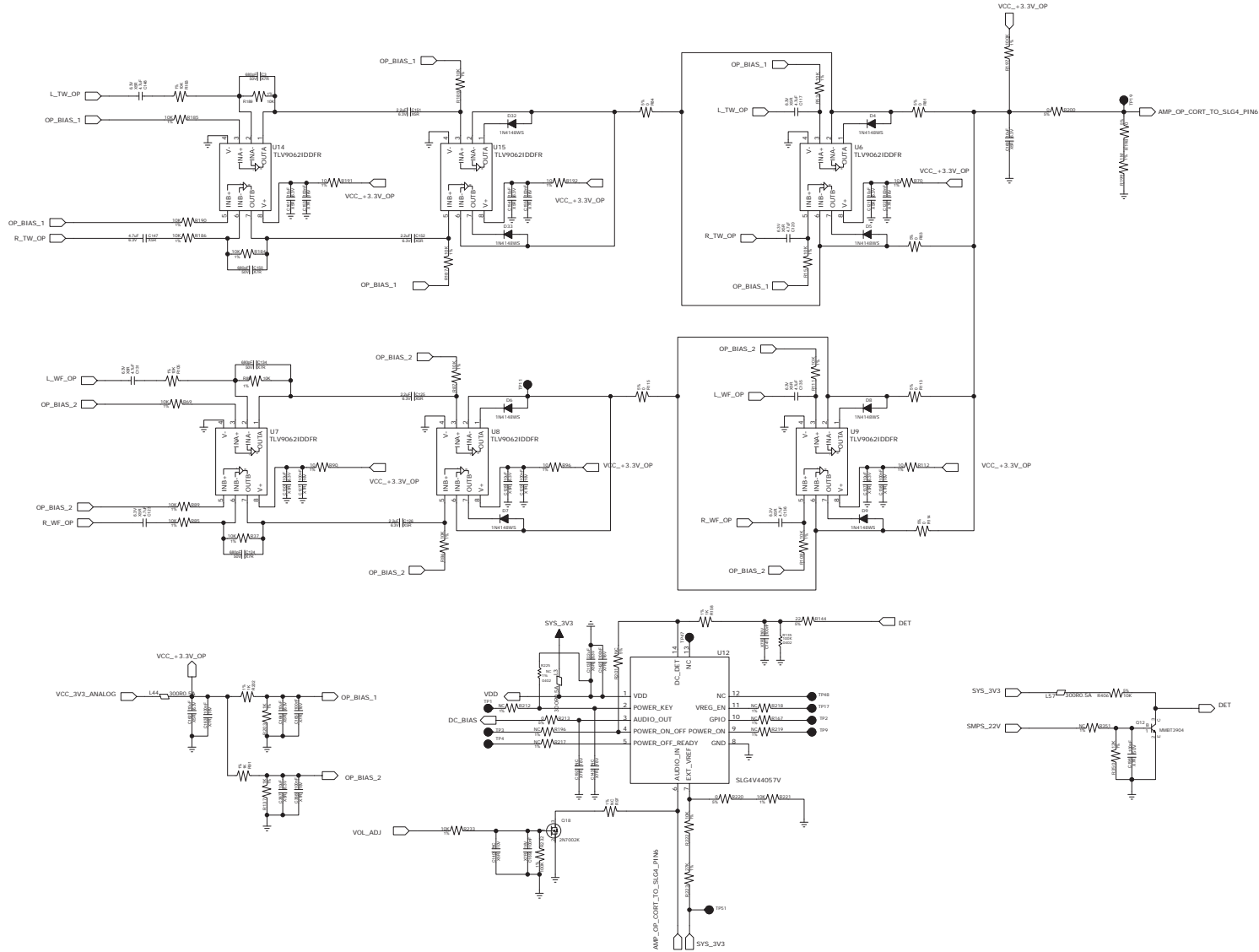
C

B

B

A

A



MAIN BOARD

D

D

C

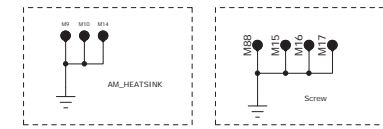
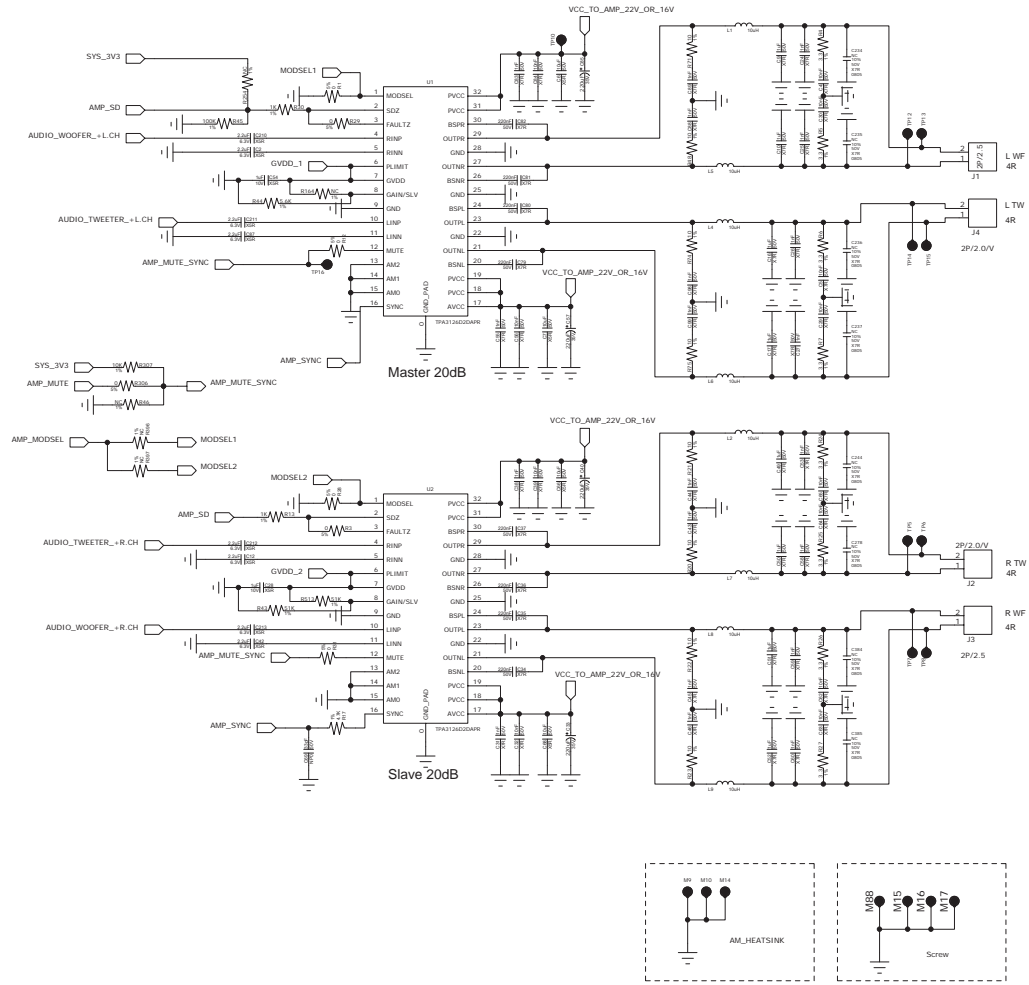
C

B

B

A

A



6

5

4

3

2

1

MAIN BOARD

D

D

C

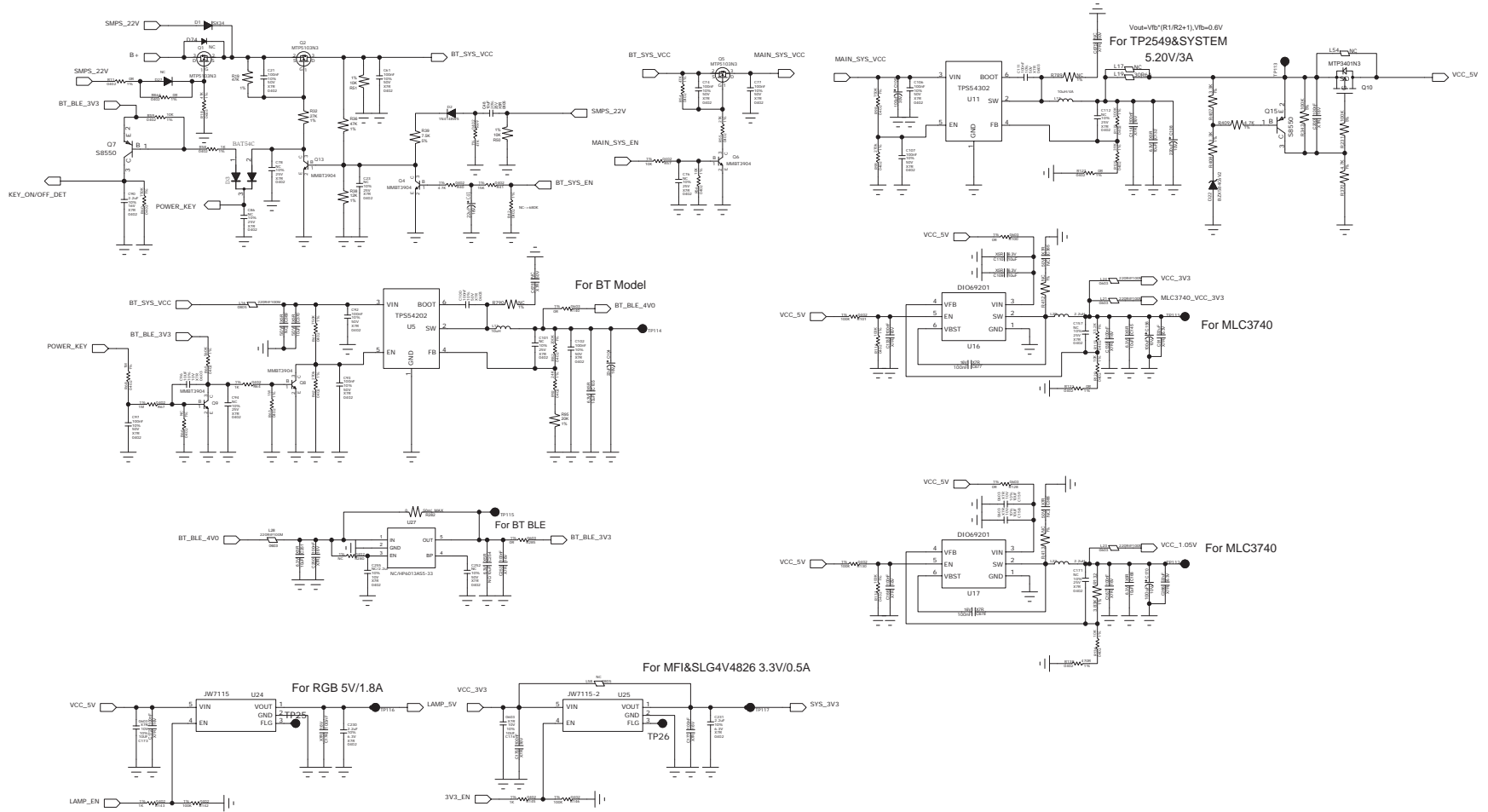
C

B

B

A

A

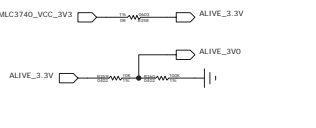
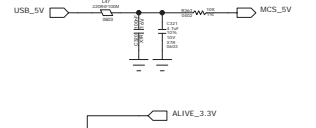
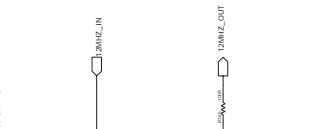
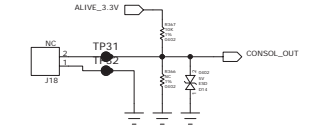
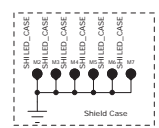
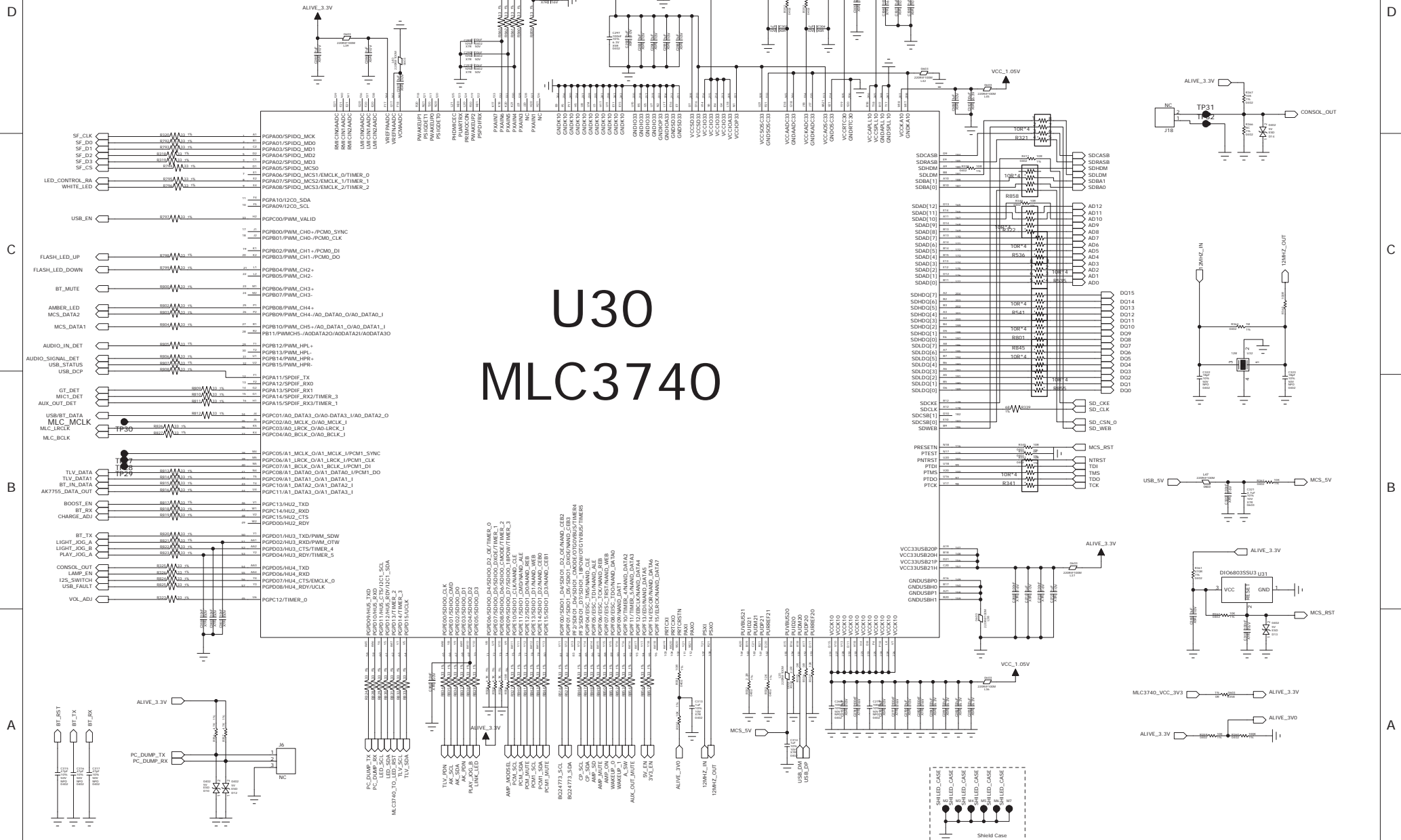






MAIN BOARD

U30  
MLC3740



MAIN BOARD

D

D

C

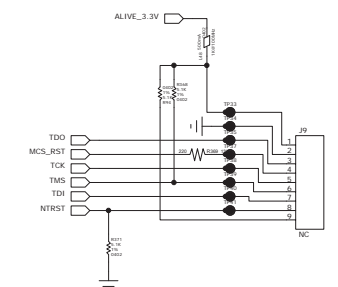
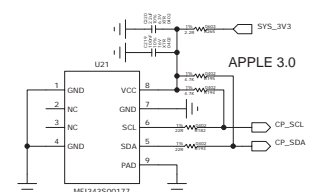
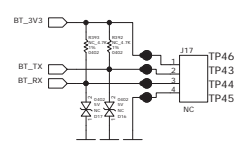
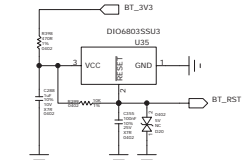
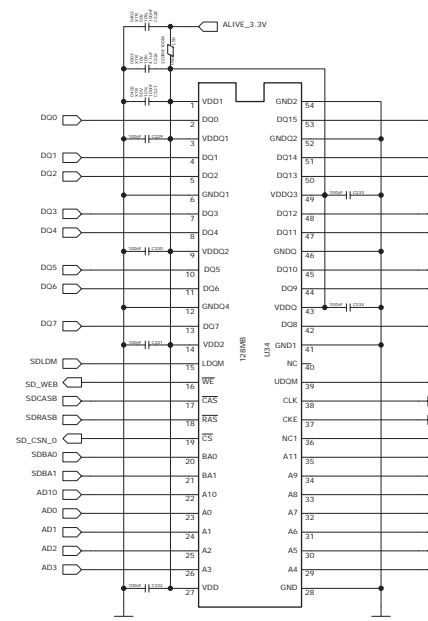
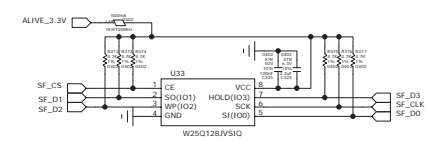
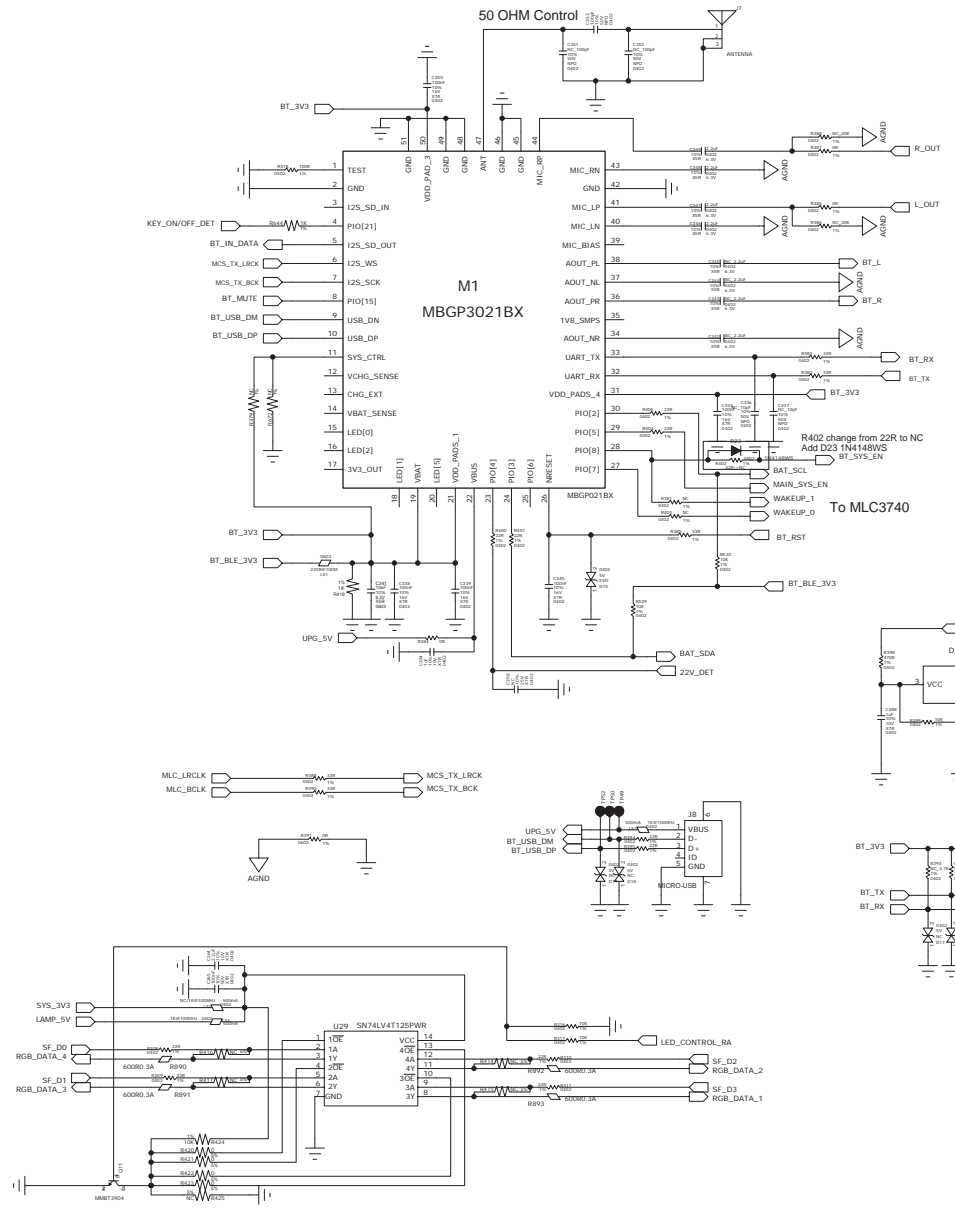
C

B

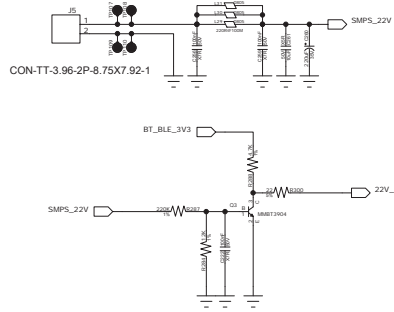
B

A

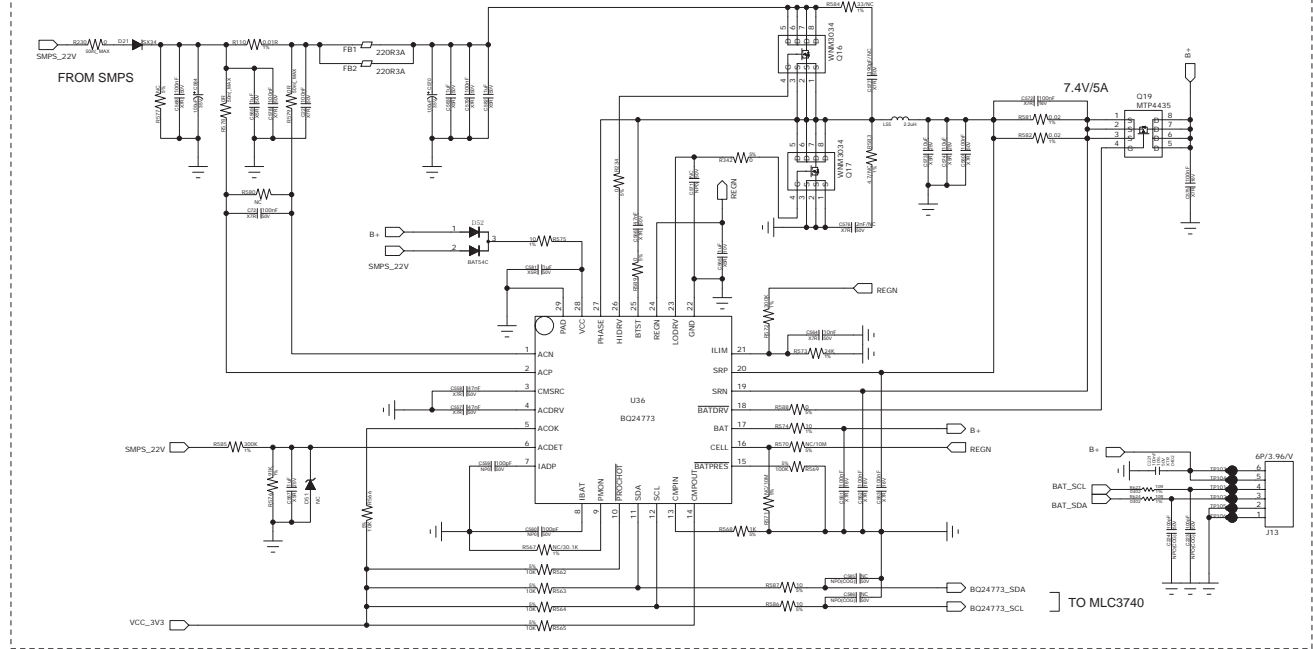
A



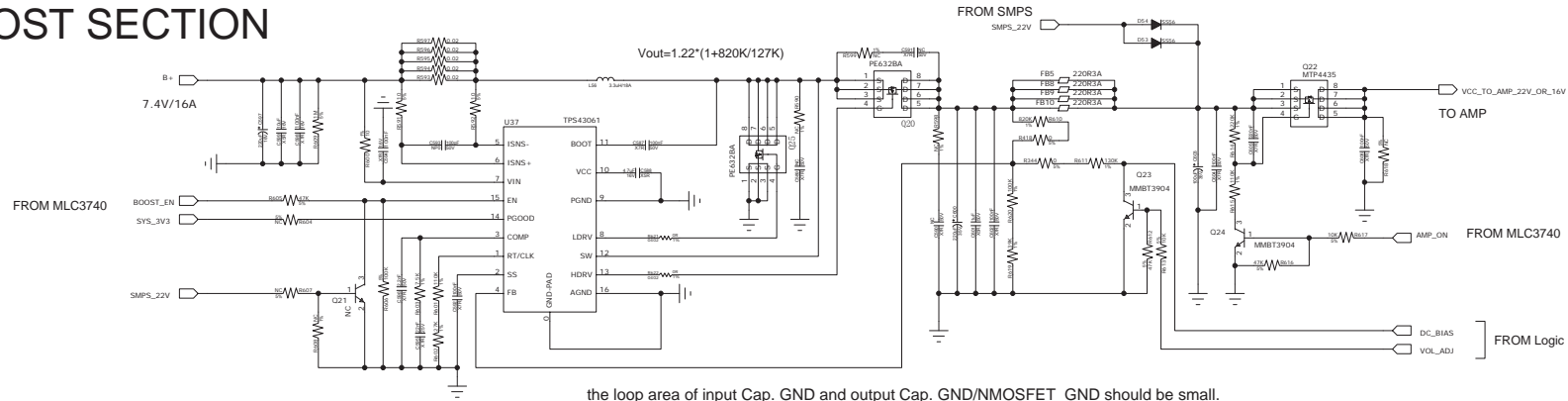
MAIN BOARD



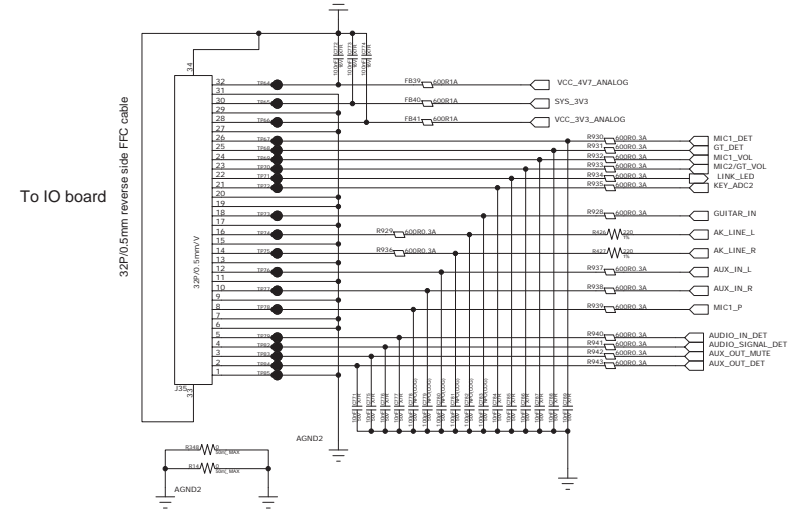
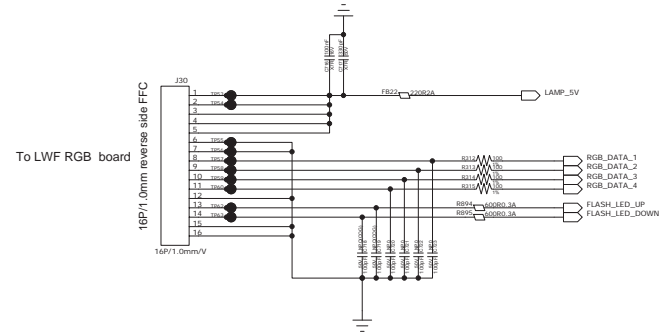
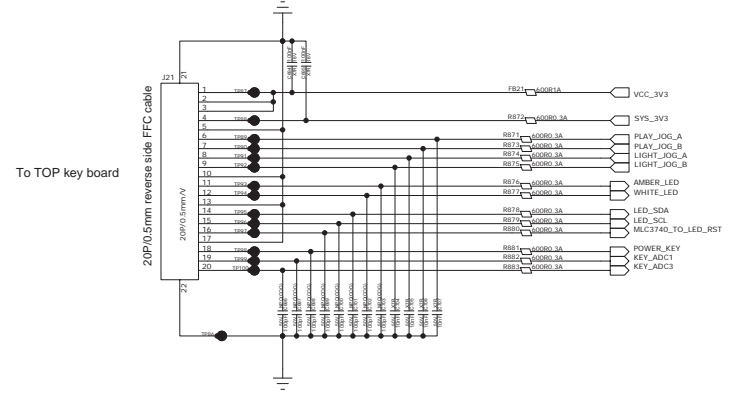
Battery Charge SECTION



BOOST SECTION



MAIN BOARD



D

D

C

C

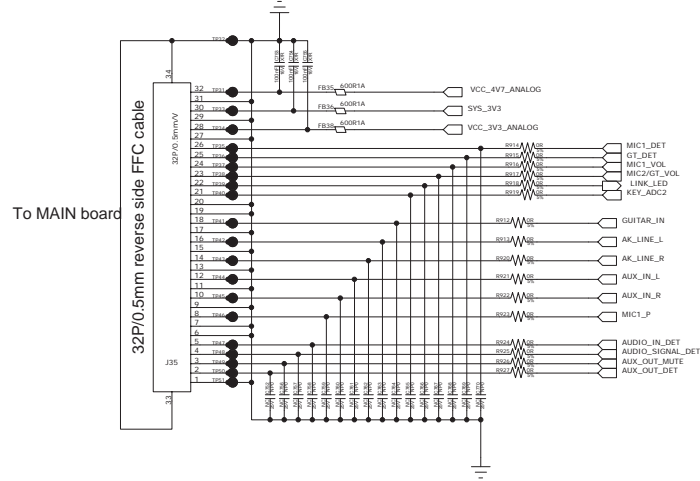
B

B

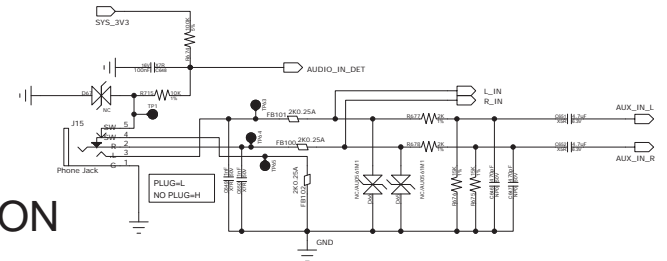
A

A

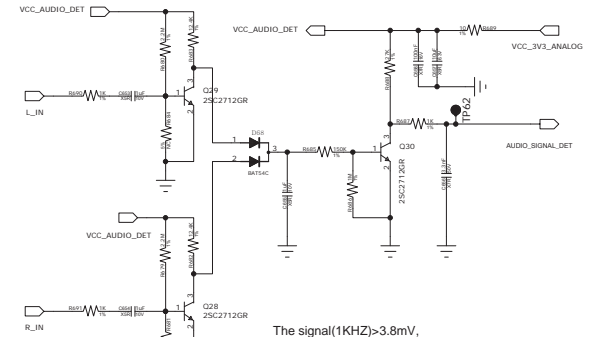
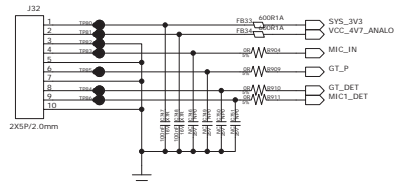
### IO BOARD



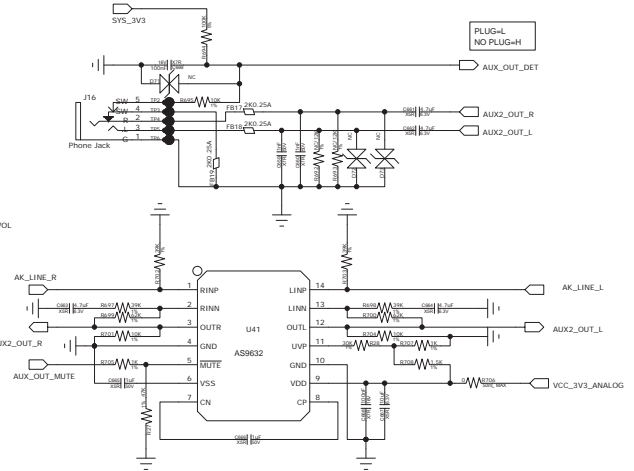
### AUX IN SECTION



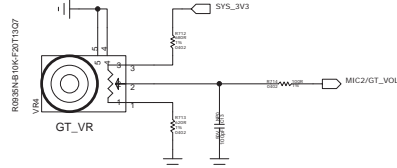
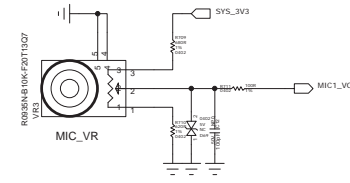
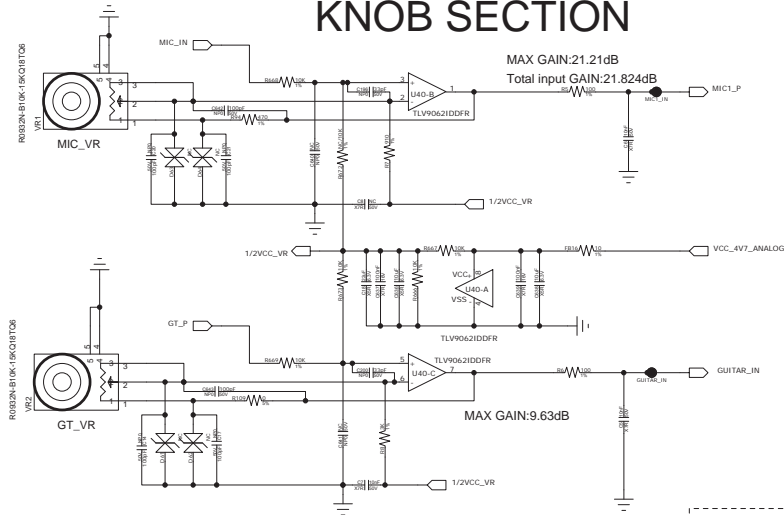
To MIC/GT IN board



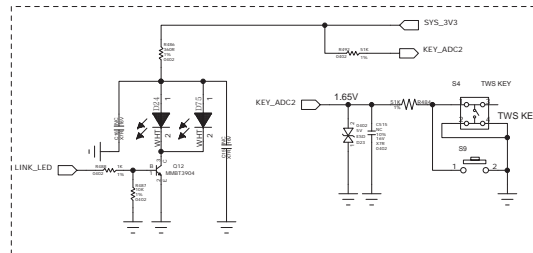
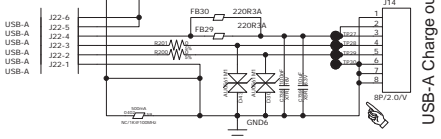
### AUX OUT SECTION



### KNOB SECTION



### USB-A JACK





IO BOARD

D

C

B

A

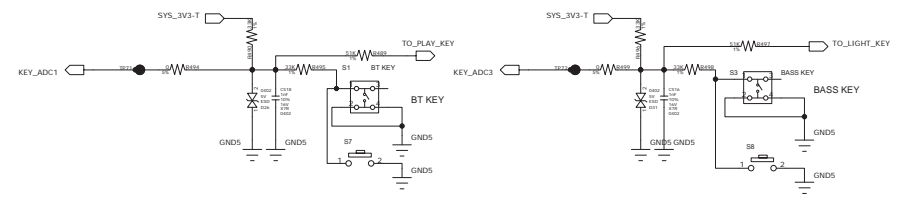
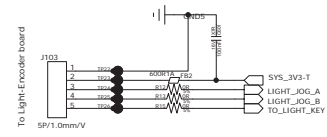
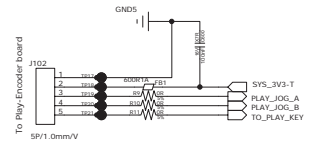
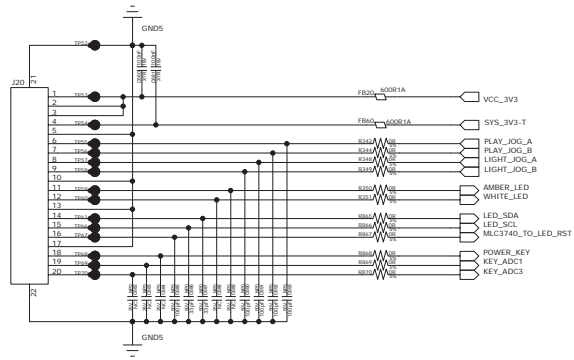
D

C

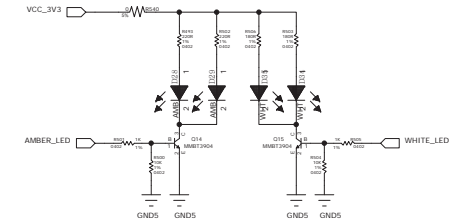
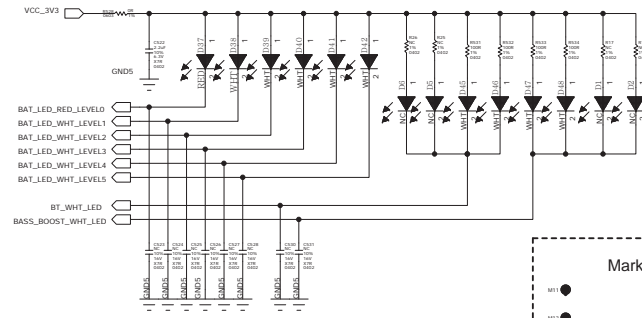
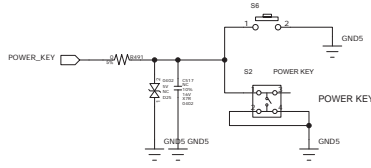
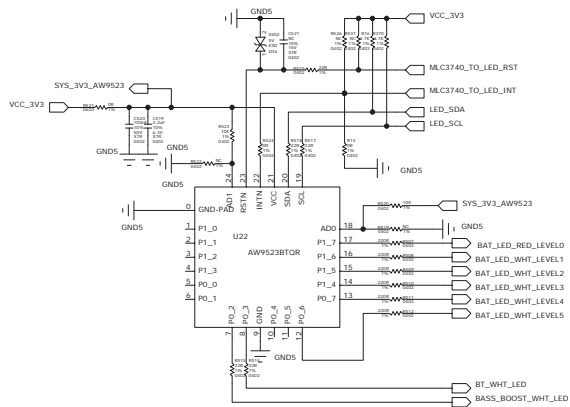
B

A

20P/0.5mm reverse side FFC cable  
20P/0.5mm/V



TOP KEY BUTTON



6

5

4

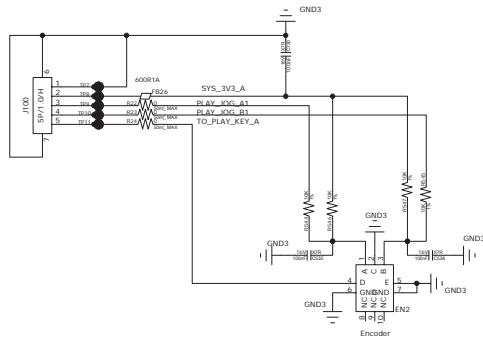
3

2

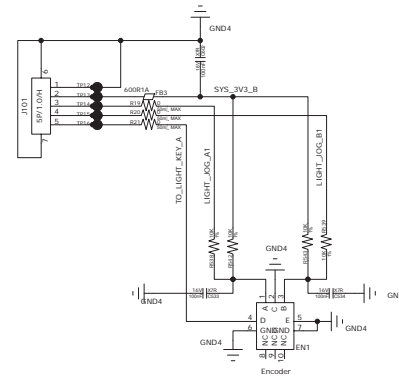
1

# IO BOARD

## Play Encoder



## Light Encoder



Mark



D

D

C

C

B

B

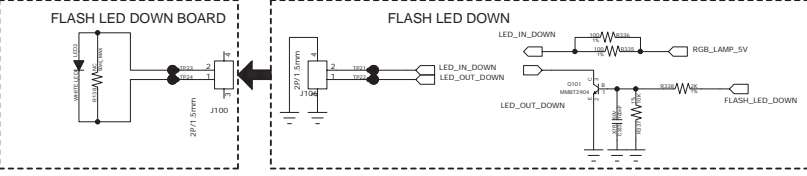
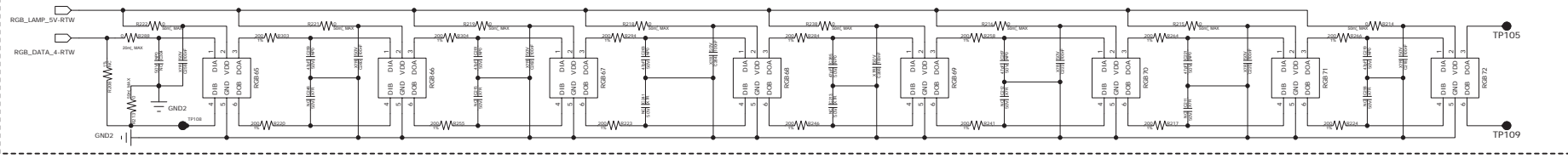
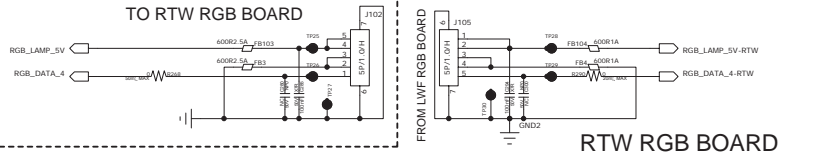
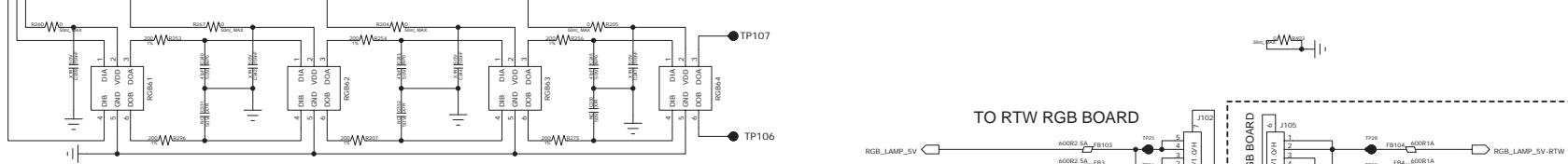
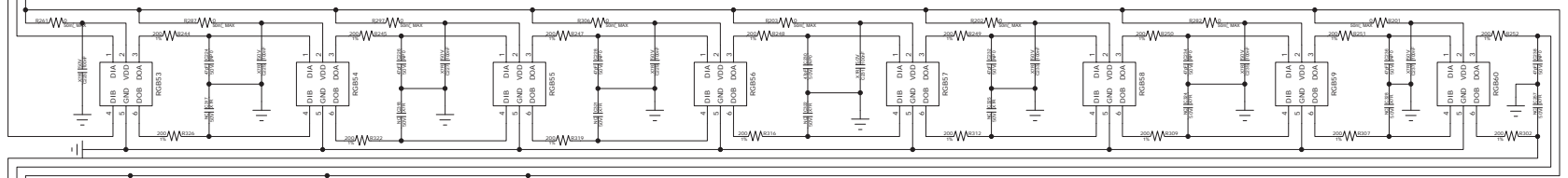
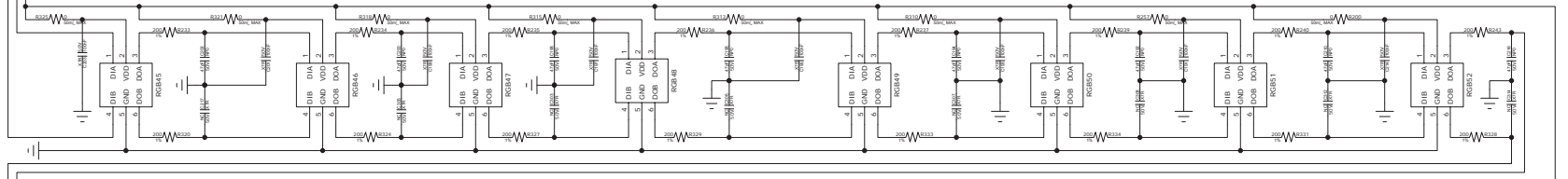
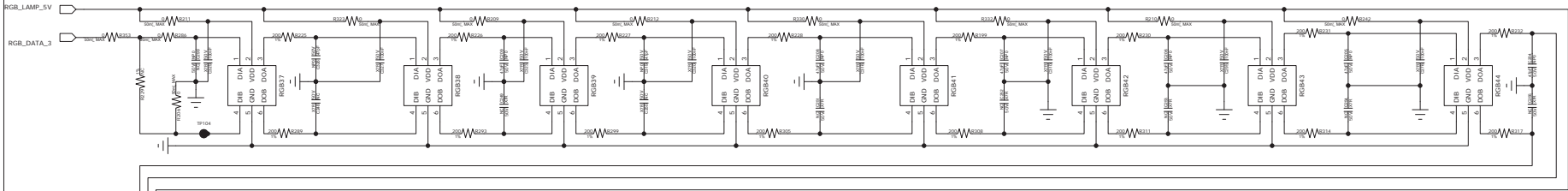
A

A

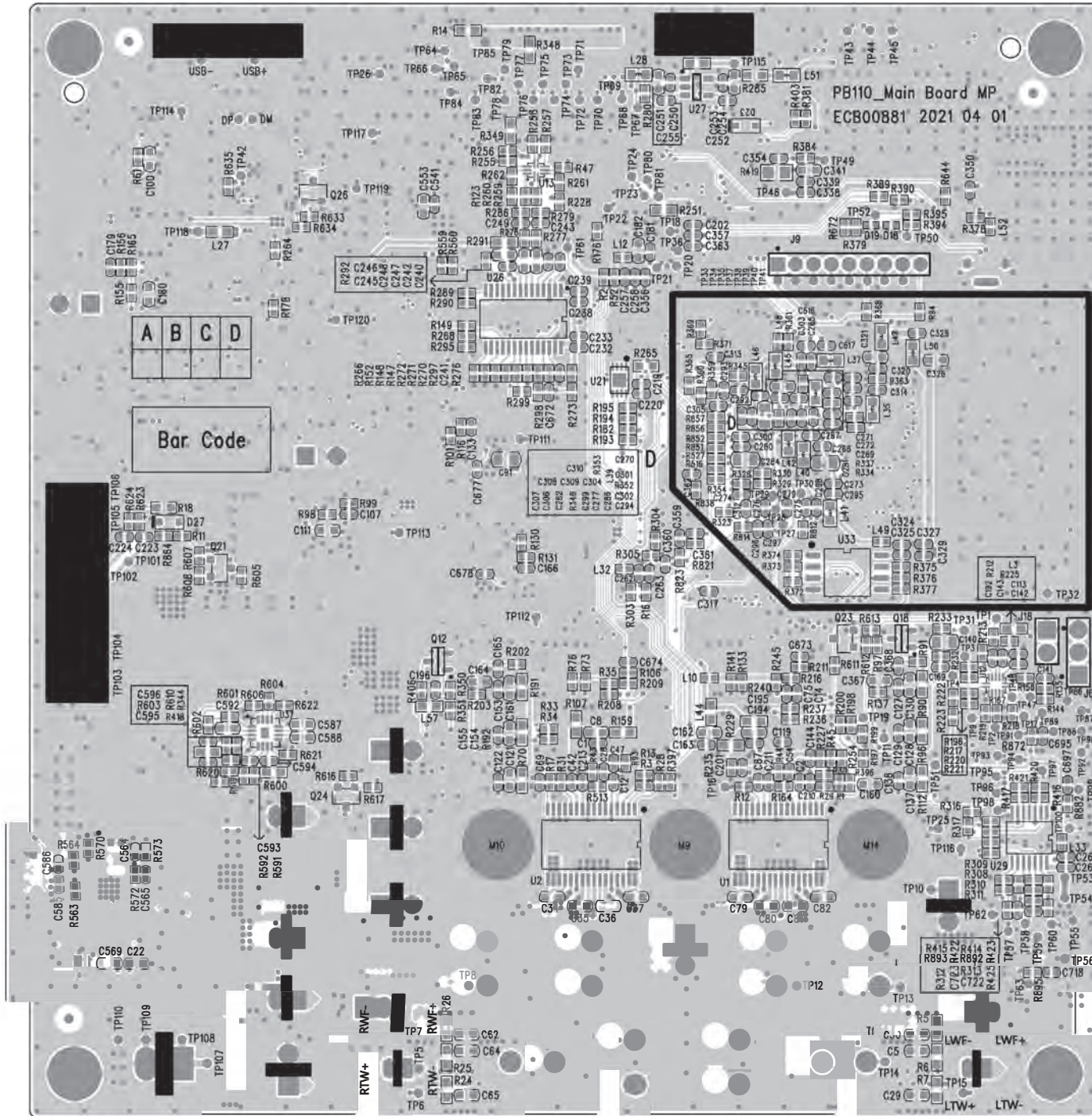




# RWF RGB BOARD



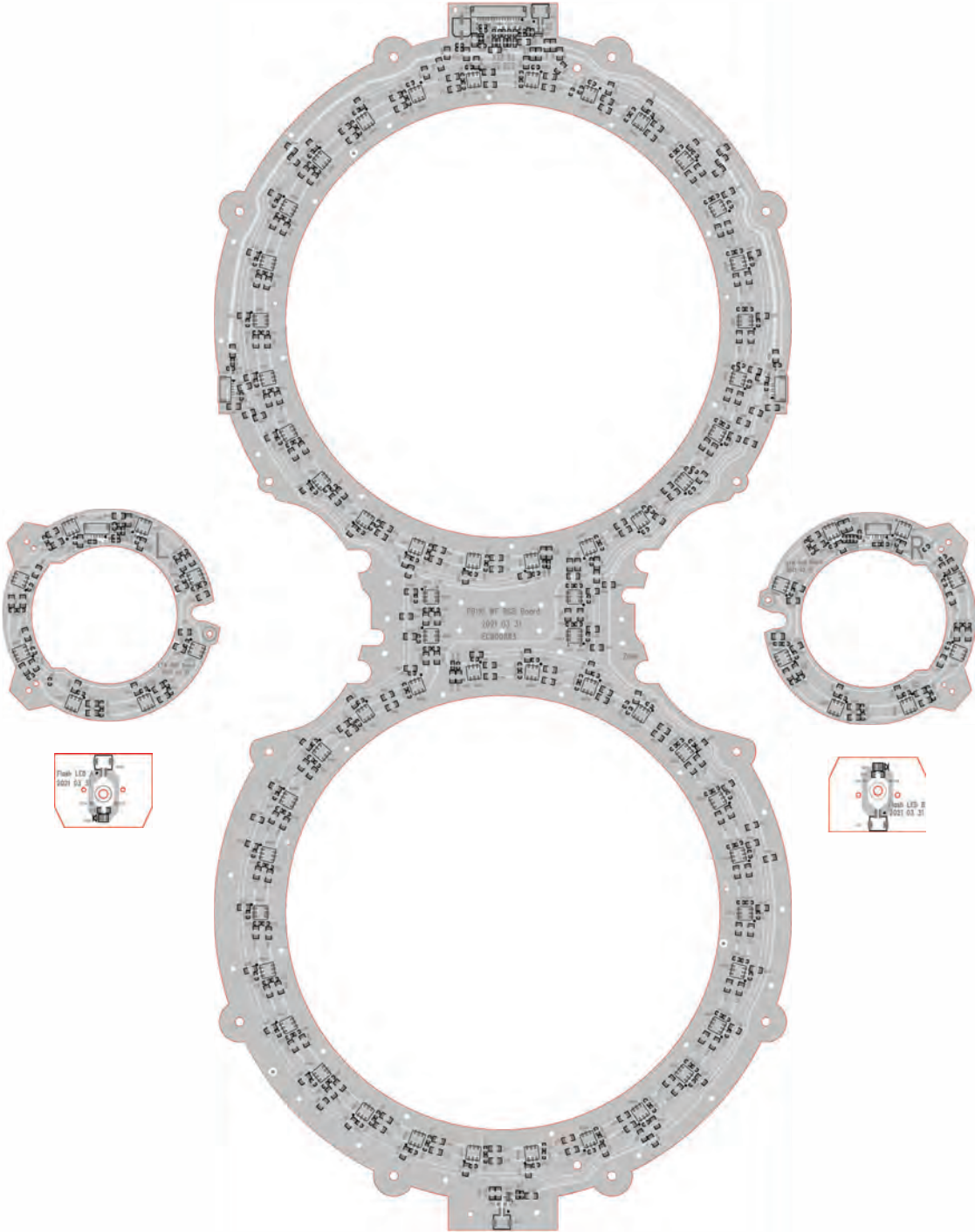
# MAIN BOARD



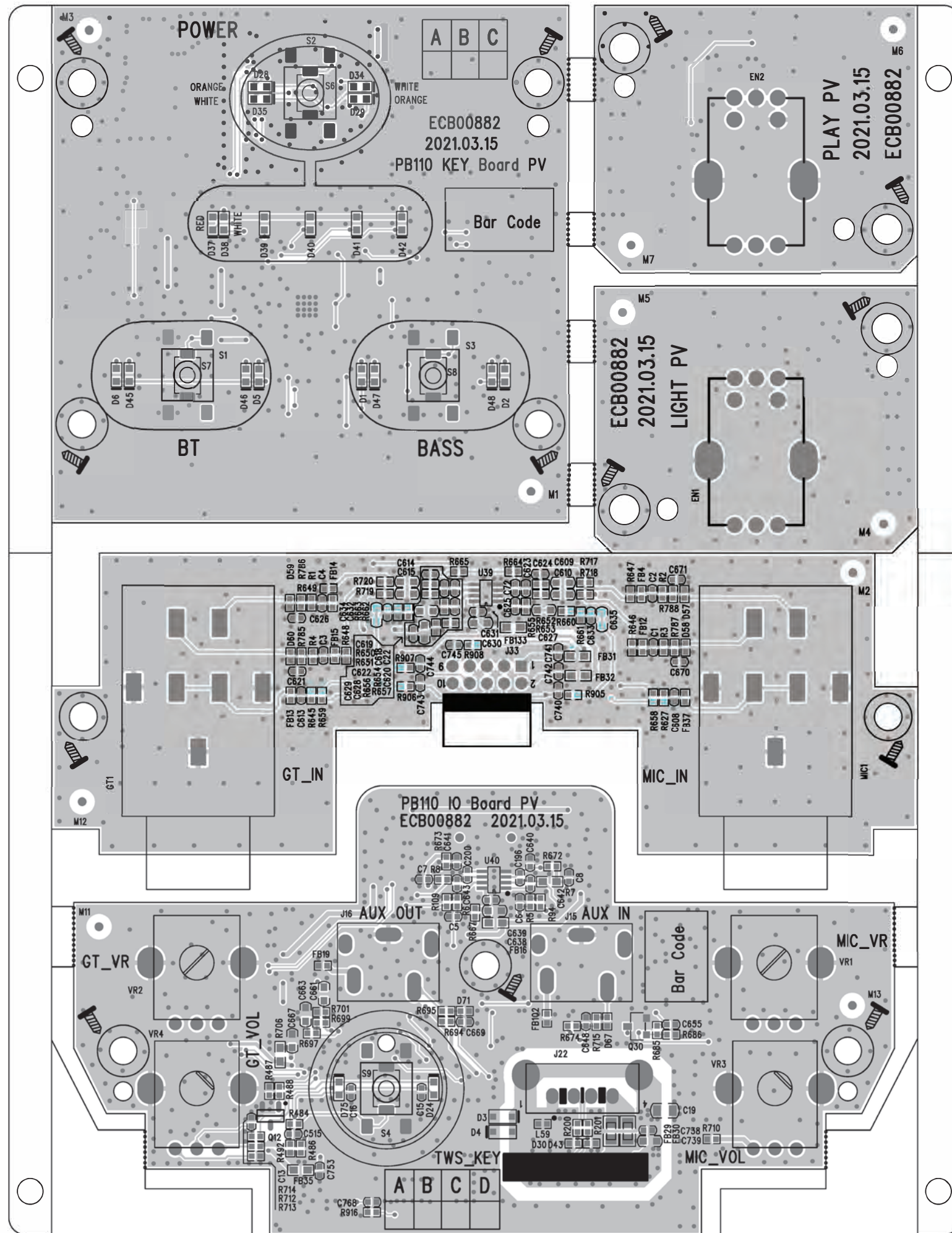
L1



RGB BOARD

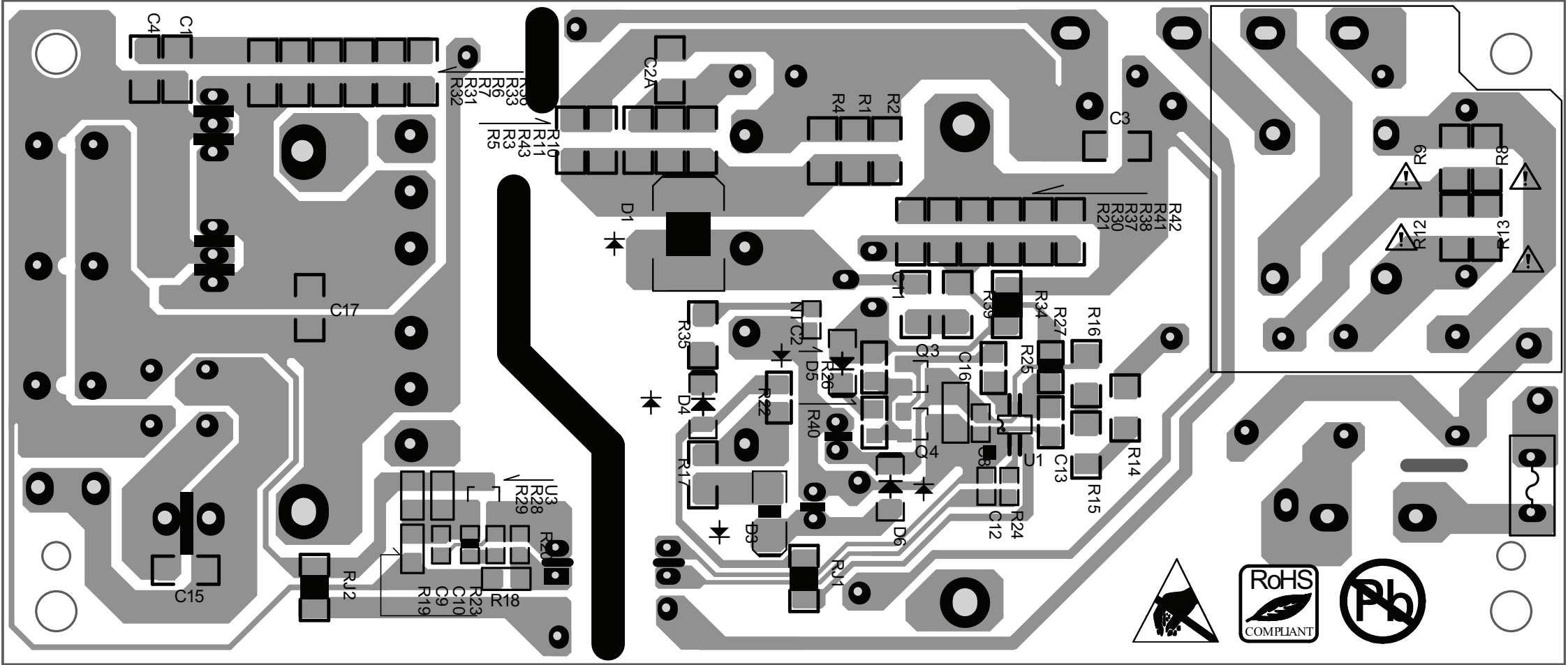


IO & Key & Mic & Light & Play Board (you have to order 2P/Ns together at same time) P/N: PAS02745077+PAS02745006



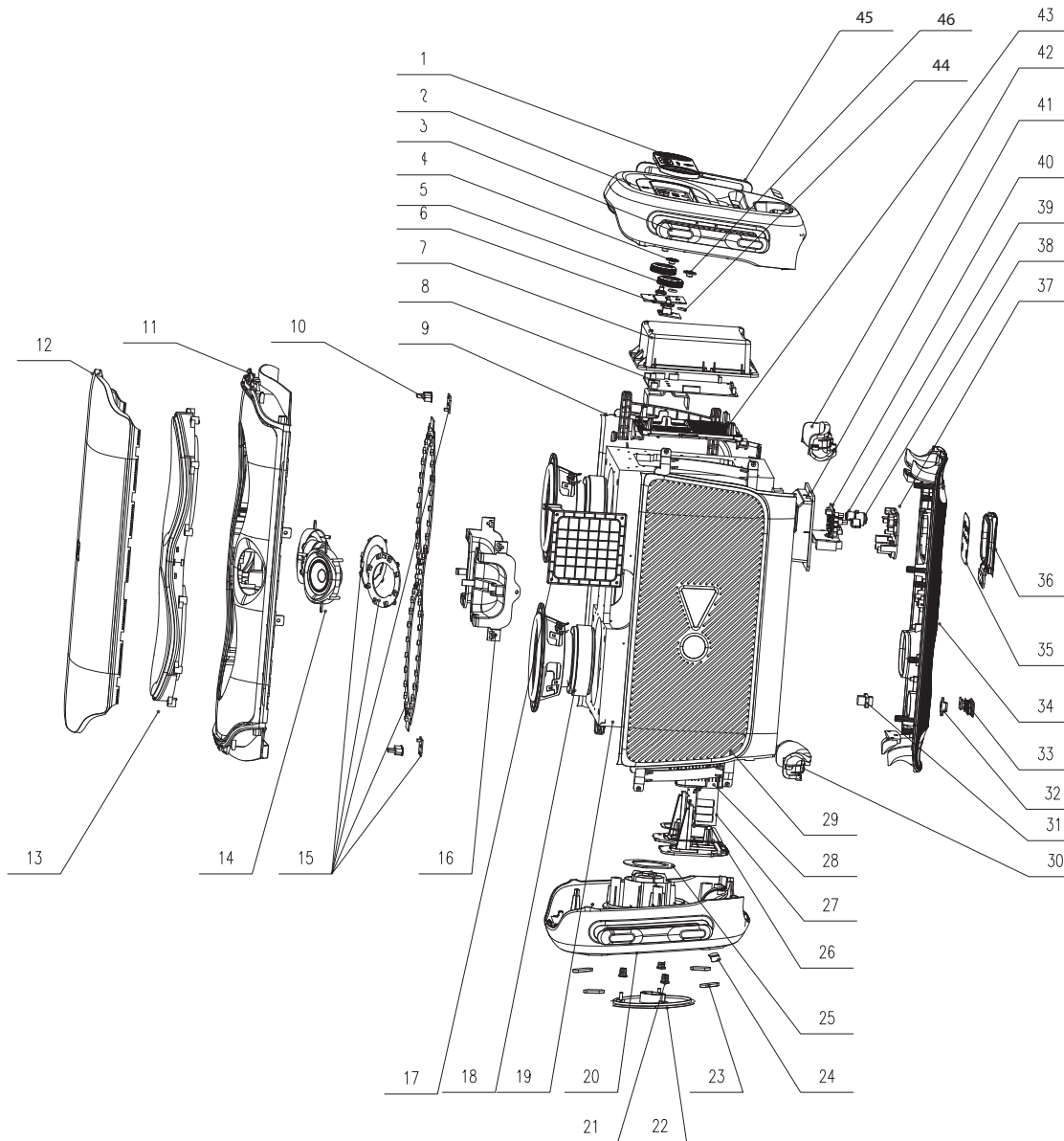


POWER BOARD





# MECHANICAL EXPLODED VIEW



| Pos. No. | P/N         | Description                        | UoM | Usage |
|----------|-------------|------------------------------------|-----|-------|
| 1        | PAS02745001 | CONTROL PANEL PARTYBOX110          | EA  | 1     |
| 2        | PAS02745002 | TOP COVER ASSEMBLY PARTYBOX110     | EA  | 1     |
| 3        | PAS02745003 | SIDE FOOT A PARTYBOX110            | EA  | 2     |
| 4        | PAS02745004 | LIGHT BUTTON COVER PARTYBOX110     | EA  | 1     |
| 5        | PAS02745005 | KNOB BRACKET PARTYBOX110           | EA  | 2     |
| 6+40     | PAS02745006 | IO+VOL+LED+PLAY+KEY BOARD          | SY  | 1     |
| 7        | PAS02745007 | MAIN BOARD SEAL BOX PARTYBOX110    | EA  | 1     |
| 8+43     | PAS02745008 | MAIN BOARD PARTYBOX110             | SY  | 1     |
| 9        | PAS02745009 | SIDE COVER L PARTYBOX110           | EA  | 1     |
| 10       | PAS02745010 | LENS PARTYBOX110                   | EA  | 2     |
| 11       | PAS02745011 | FRONT HOUSING PARTYBOX110          | EA  | 1     |
| 12       | PAS02745012 | GRILL ASSEMBLY PARTYBOX110         | EA  | 1     |
| 13       | PAS02745013 | RING PARTYBOX110                   | EA  | 1     |
| 14       | PAS02745014 | TWEETER PARTYBOX110                | EA  | 2     |
| 15       | PAS02745015 | RGB BOARD PARTYBOX110              | SY  | 1     |
| 16       | PAS02745016 | TWEETER BRACKET PARTYBOX110        | EA  | 2     |
| 17       | PAS02745017 | LI-ION BATTERY PARTYBOX110         | EA  | 1     |
| 18       | PAS02745018 | WOOFER PARTYBOX110                 | EA  | 2     |
| 19       | PAS02745019 | WOODEN BOX ASSEMBLY PARTYBOX110    | EA  | 1     |
| 20       | PAS02745020 | BOTTOM COVER ASSEMBLY PARTYBOX110  | EA  | 1     |
| 21       | PAS02745021 | RUBBER PLUG PARTYBOX110            | EA  | 3     |
| 22       | PAS02745022 | BOTTOM COVER PLATE PARTYBOX110     | EA  | 1     |
| 23       | PAS02745023 | FOOT PARTYBOX110                   | EA  | 4     |
| 24       | PAS02745024 | PC SCREW HOLE COVER PARTYBOX110    | EA  | 2     |
| 25       | PAS02745025 | PE GASKET PARTYBOX110              | EA  | 1     |
| 26       | PAS02745026 | POWER BOARD BRACKET PARTYBOX110    | EA  | 1     |
| 27       | PAS02745027 | POWER BOARD PARTYBOX110            | EA  | 1     |
| 28       | PAS02745028 | POWER BOARD BOX PARTYBOX110        | EA  | 1     |
| 29       | PAS02745029 | SIDE COVER R PARTYBOX110           | EA  | 1     |
| 30       | PAS02745030 | HANDLE BRACKET PARTYBOX110         | EA  | 2     |
| 31       | PAS02745031 | AC POWER JACK PARTYBOX110          | EA  | 1     |
| 32       | PAS02745032 | AC POWER BRACKET PARTYBOX110       | EA  | 1     |
| 33       | PAS02745033 | AC POWER SEAL COVER PARTYBOX110    | EA  | 1     |
| 34       | PAS02745034 | REAR HOUSING PARTYBOX110           | EA  | 1     |
| 35       | PAS02745035 | PC CHIP PARTYBOX110                | EA  | 1     |
| 36       | PAS02745036 | IO SEAL COVER ASSEMBLY PARTYBOX110 | EA  | 1     |
| 37       | PAS02745037 | IO COVER PLATE PARTYBOX110         | EA  | 1     |
| 38       | PAS02745038 | TWS BUTTON PARTYBOX110             | EA  | 1     |
| 39       | PAS02745039 | KNOB PARTYBOX110                   | EA  | 2     |
| 41       | PAS02745040 | IO SEAL BOX PARTYBOX110            | EA  | 1     |
| 42       | PAS02745041 | SILICONE HANDLE PARTYBOX110        | EA  | 2     |
| 44       | PAS02745043 | RUBBER RING COVER PARTYBOX110      | EA  | 2     |
| 45       | PAS02745044 | SIDE FOOT B PARTYBOX110            | EA  | 2     |
| 46       | PAS02745042 | PLAY BUTTON COVER PARTYBOX110      | EA  | 1     |

## JBL PARTYBOX 110 SPARE PARTS LIST V1.2

| Pos. No. | P/N         | Description                           | UoM | Usage |
|----------|-------------|---------------------------------------|-----|-------|
| 1        | PAS02745001 | CONTROL PANEL PARTYBOX110             | EA  | 1     |
| 2        | PAS02745002 | TOP COVER ASSEMBLY PARTYBOX110        | EA  | 1     |
| 3        | PAS02745003 | SIDE FOOT A PARTYBOX110               | EA  | 2     |
| 4        | PAS02745004 | LIGHT BUTTON COVER PARTYBOX110        | EA  | 1     |
| 5        | PAS02745005 | KNOB BRACKET PARTYBOX110              | EA  | 2     |
| 6        | PAS02745077 | KEY/MIC/LIGHT/PLAY BOARDS PARTYBOX110 | SY  | 1     |
| 7        | PAS02745007 | MAIN BOARD SEAL BOX PARTYBOX110       | EA  | 1     |
| 8+43     | PAS02745008 | MAIN BOARD PARTYBOX110                | SY  | 1     |
| 9        | PAS02745009 | SIDE COVER L PARTYBOX110              | EA  | 1     |
| 10       | PAS02745010 | LENS PARTYBOX110                      | EA  | 2     |
| 11+12    | PAS02745076 | FRONT HOUSING ASSY PARTYBOX110        | SY  | 1     |
| 13       | PAS02745013 | RING PARTYBOX110                      | EA  | 1     |
| 14       | PAS02745014 | TWEETER PARTYBOX110                   | EA  | 2     |
| 15       | PAS02745015 | RGB BOARD PARTYBOX110                 | EA  | 1     |
| 16       | PAS02745016 | TWEETER BRACKET PARTYBOX110           | EA  | 2     |
| 17       | PAS02745017 | LI-ION BATTERY PARTYBOX110            | EA  | 1     |
| 18       | PAS02745018 | WOOFER PARTYBOX110                    | EA  | 2     |
| 19       | PAS02745019 | WOODEN BOX ASSEMBLY PARTYBOX110       | EA  | 1     |
| 20       | PAS02745020 | BOTTOM COVER ASSEMBLY PARTYBOX110     | EA  | 1     |
| 21       | PAS00918176 | RUBBER PLUG CITATION200/PARTYBOX110   | EA  | 3     |
| 22       | PAS02745022 | BOTTOM COVER PLATE PARTYBOX110        | EA  | 1     |
| 23       | PAS02745023 | FOOT PARTYBOX110                      | EA  | 4     |
| 24       | PAS02745024 | PC SCREW HOLE COVER PARTYBOX110       | EA  | 2     |
| 25       | PAS02745025 | PE GASKET PARTYBOX110                 | EA  | 1     |
| 26       | PAS02745026 | POWER BOARD BRACKET PARTYBOX110       | EA  | 1     |
| 27       | PAS02745027 | POWER BOARD PARTYBOX110               | EA  | 1     |
| 28       | PAS02745028 | POWER BOARD BOX PARTYBOX110           | EA  | 1     |
| 29       | PAS02745029 | SIDE COVER R PARTYBOX110              | EA  | 1     |
| 30       | PAS02745030 | HANDLE BRACKET PARTYBOX110            | EA  | 2     |
| 31       | PAS02745031 | AC POWER JACK PARTYBOX110             | EA  | 1     |
| 32       | PAS02745032 | AC POWER BRACKET PARTYBOX110          | EA  | 1     |
| 33       | PAS02745033 | AC POWER SEAL COVER PARTYBOX110       | EA  | 1     |
| 34       | PAS02745034 | REAR HOUSING PARTYBOX110              | EA  | 1     |
| 35       | PAS02745035 | PC CHIP PARTYBOX110                   | EA  | 1     |
| 36       | PAS02745036 | IO SEAL COVER ASSEMBLY PARTYBOX110    | EA  | 1     |
| 37       | PAS02745037 | IO COVER PLATE PARTYBOX110            | EA  | 1     |
| 38       | PAS02745038 | TWS BUTTON PARTYBOX110                | EA  | 1     |
| 39       | PAS02745039 | KNOB PARTYBOX110                      | EA  | 2     |
| 40       |             | IO BOARDS PARTYBOX110                 | SY  | 1     |
| 41       | PAS02745040 | IO SEAL BOX PARTYBOX110               | EA  | 1     |
| 42       | PAS02745041 | SILICONE HANDLE PARTYBOX110           | EA  | 2     |
| 44       | PAS02745043 | RUBBER RING COVER PARTYBOX110         | EA  | 2     |
| 45       | PAS02745044 | SIDE FOOT B PARTYBOX110               | EA  | 2     |
| 46       | PAS02745042 | PLAY BUTTON COVER PARTYBOX110         | EA  | 1     |
|          | PAS02745064 | I/O FFC CABLE PARTYBOX110             | EA  | 1     |
|          | PAS02745065 | RGB FFC CABLE A PARTYBOX110           | EA  | 1     |
|          | PAS02745066 | RGB FFC CABLE B PARTYBOX110           | EA  | 2     |
|          | PAS02745067 | TWEETER CABLE PARTYBOX110             | EA  | 2     |
|          | PAS02745068 | WOOFER CABLE UP PARTYBOX110           | EA  | 1     |
|          | PAS02745069 | KNOB FFC CABLE PARTYBOX110            | EA  | 2     |

|             |                                 |    |   |
|-------------|---------------------------------|----|---|
| PAS02745070 | FLASH LAMP CABLE PARTYBOX110    | EA | 2 |
| PAS02745071 | KEY BOARD FFC CABLE PARTYBOX110 | EA | 1 |
| PAS02745072 | DC CABLE CABLE PARTYBOX110      | EA | 1 |
| PAS02745073 | WOOFER CABLE DOWN PARTYBOX110   | EA | 1 |
| PAS02745074 | CHARGING CABLE PARTYBOX110      | EA | 1 |
| PAS02745075 | AC WIRE CABLE PARTYBOX110       | EA | 1 |
| PAS02745045 | AC POWER CORD AM PARTYBOX110    | EA | 1 |
| PAS02745046 | AC POWER CORD CN PARTYBOX110    | EA | 1 |
| PAS02745047 | AC POWER CORD KO PARTYBOX110    | EA | 1 |
| PAS02745048 | AC POWER CORD AU PARTYBOX110    | EA | 1 |
| PAS02745049 | AC POWER CORD TH PARTYBOX110    | EA | 1 |
| PAS02745050 | AC POWER CORD EU PARTYBOX110    | EA | 1 |
| PAS02745051 | AC POWER CORD IN PARTYBOX110    | EA | 1 |
| PAS02745052 | AC POWER CORD UK PARTYBOX110    | EA | 1 |
| PAS02745053 | AC POWER CORD JN PARTYBOX110    | EA | 1 |
| PAS02745054 | AC POWER CORD BR PARTYBOX110    | EA | 1 |
| PAS02745055 | GIFT BOX AM PARTYBOX110         | EA | 1 |
| PAS02745056 | GIFT BOX CN PARTYBOX110         | EA | 1 |
| PAS02745057 | GIFT BOX AS PARTYBOX110         | EA | 1 |
| PAS02745058 | GIFT BOX EU PARTYBOX110         | EA | 1 |
| PAS02745059 | GIFT BOX IN PARTYBOX110         | EA | 1 |
| PAS02745060 | GIFT BOX UK PARTYBOX110         | EA | 1 |
| PAS02745061 | GIFT BOX JN PARTYBOX110         | EA | 1 |
| PAS02745062 | GIFT BOX BR PARTYBOX110         | EA | 1 |
| PAS02745063 | GIFT BOX RU PARTYBOX110         | EA | 1 |
| PAS02745078 | ANTENNA PARTYBOX110             | EA | 1 |

# PARTYBOX 110 S/N Modification Instructions

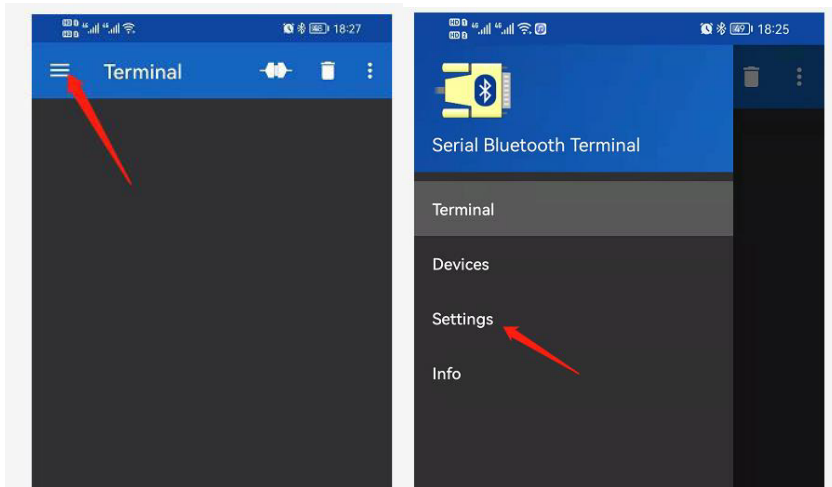
## Preparation:

Smartphone with Android OS 10

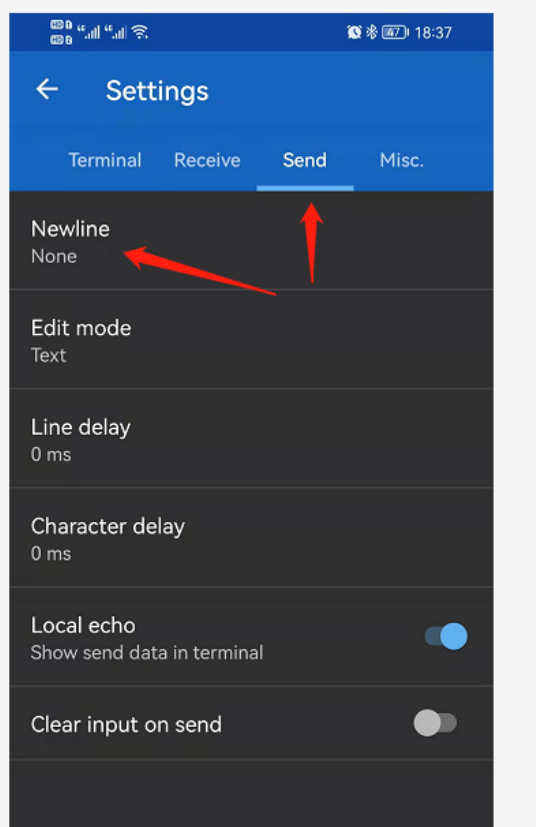
Partybox 110 device

## Steps:

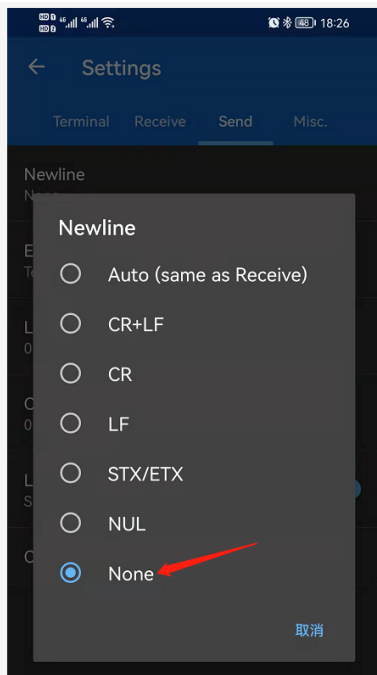
1. Download and install Serial Bluetooth Terminal APP from Google Play Store in the smartphone.
2. Connect PB110 via Bluetooth on the smartphone
3. Open the Serial Bluetooth Terminal APP on the smartphone
4. Click the “menu” icon, click “Settings”



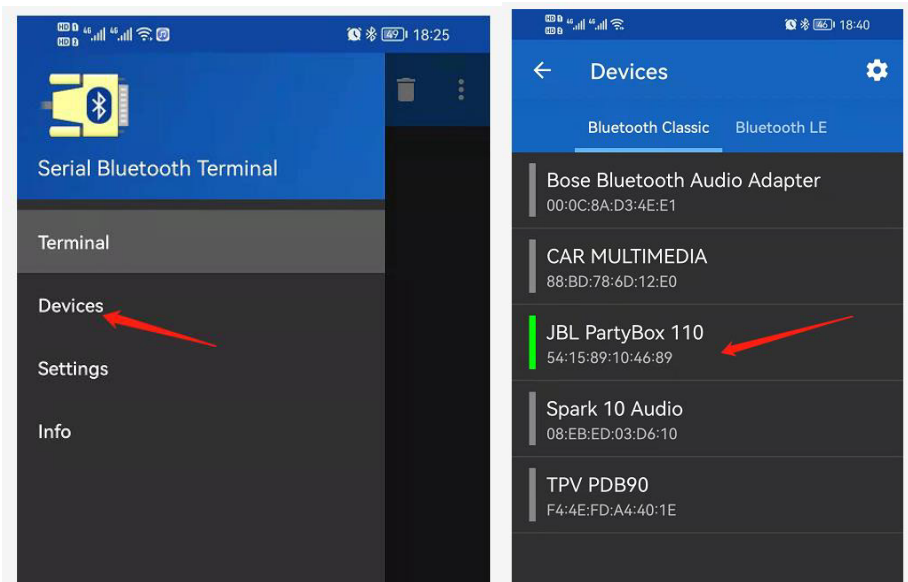
5. Select “Send” tab, then click “Newline” into newline settings



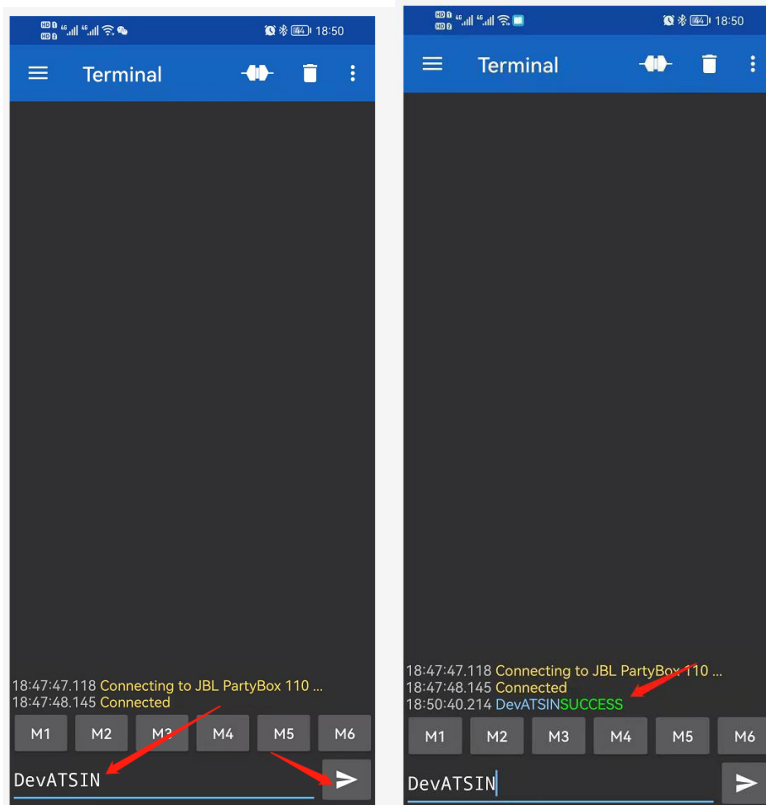
6. Select "None" for newline settings



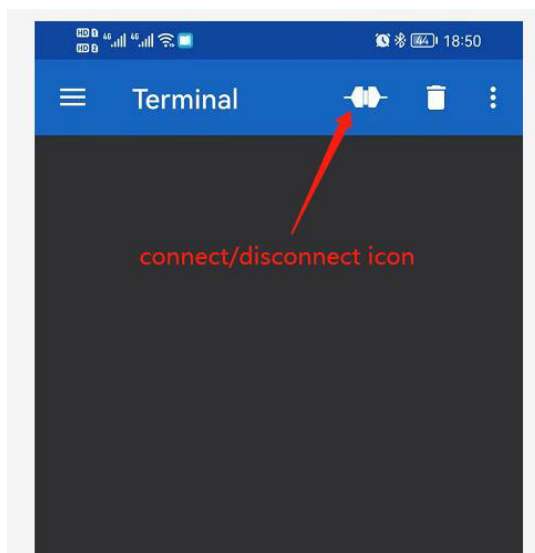
7. Click "Devices" to connect BT devices, select JBL PartBox 110



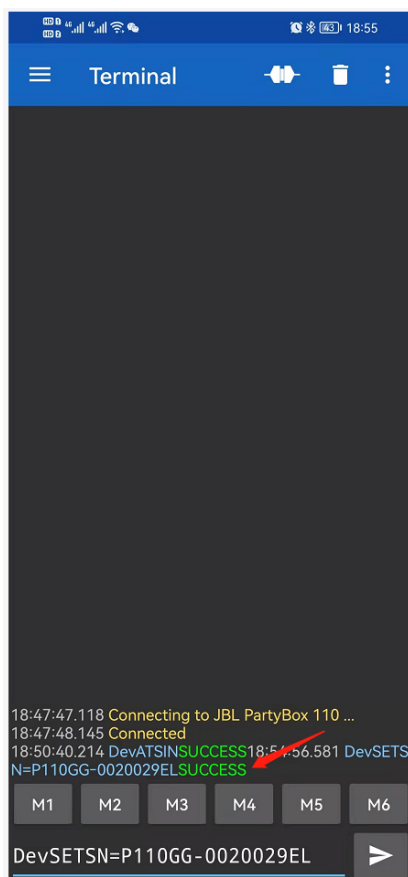
- Device connected and send “DevATSIN” command, JBL PartyBox 110 will response “SUCCESS” if connect successfully.



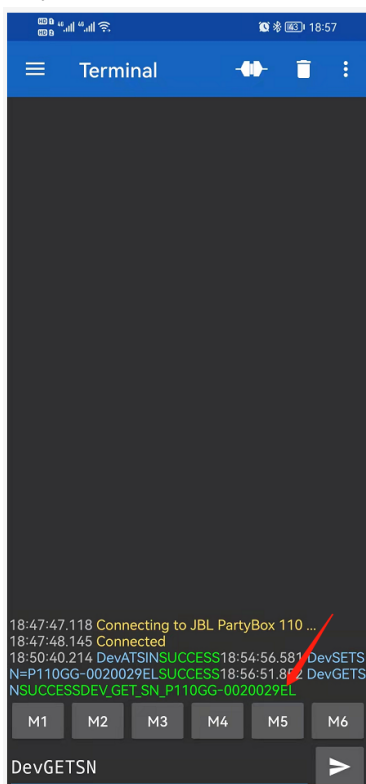
If no any response from the Device, please click “connect/disconnect” icon twice to disconnect then connect again. After reconnected, send “DevATSIN” command to check if the command available or not.



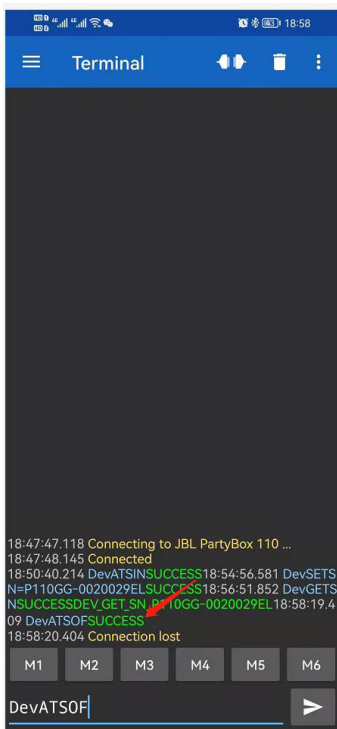
- Input command "DevSETSN=XXXXX" and then click "SEND" to modify the SN information. "XXXXX" is SN value. JBL PartyBox 110 will response "SUCCESS".



- Input command "DevGETSN" and then click "SEND" to verify the SN information.



11. Input command “DevATSOF” and then click “SEND” to quit SN modification operation.



12. Disconnected Bluetooth on the phone and reboot the PB110. Then reconnect Bluetooth and check the SN information by “PARTYBOX” APP on the smartphone.



## **Revision List**

### **Version 1.0**

\* Initial release. 2021-05

### **Version 1.1**

\* Add some missing cables and update 2 parts descriptions in Parts List 2021-06

### **Version 1.2**

\* Split a panel board into Pos. # 6, KEY/MIC/LIGHT/PLAY BOARDS and Pos. # 40, IO BOARDS (but must be ordered together, that is Pos# 6+40, total 5 PCBAs), add Antenna and update description for Pos.# 21 and Pos.# 24 in Parts List . 2021-06

### **Version 1.3**

\* Add Series Number modification instructions 2021-11