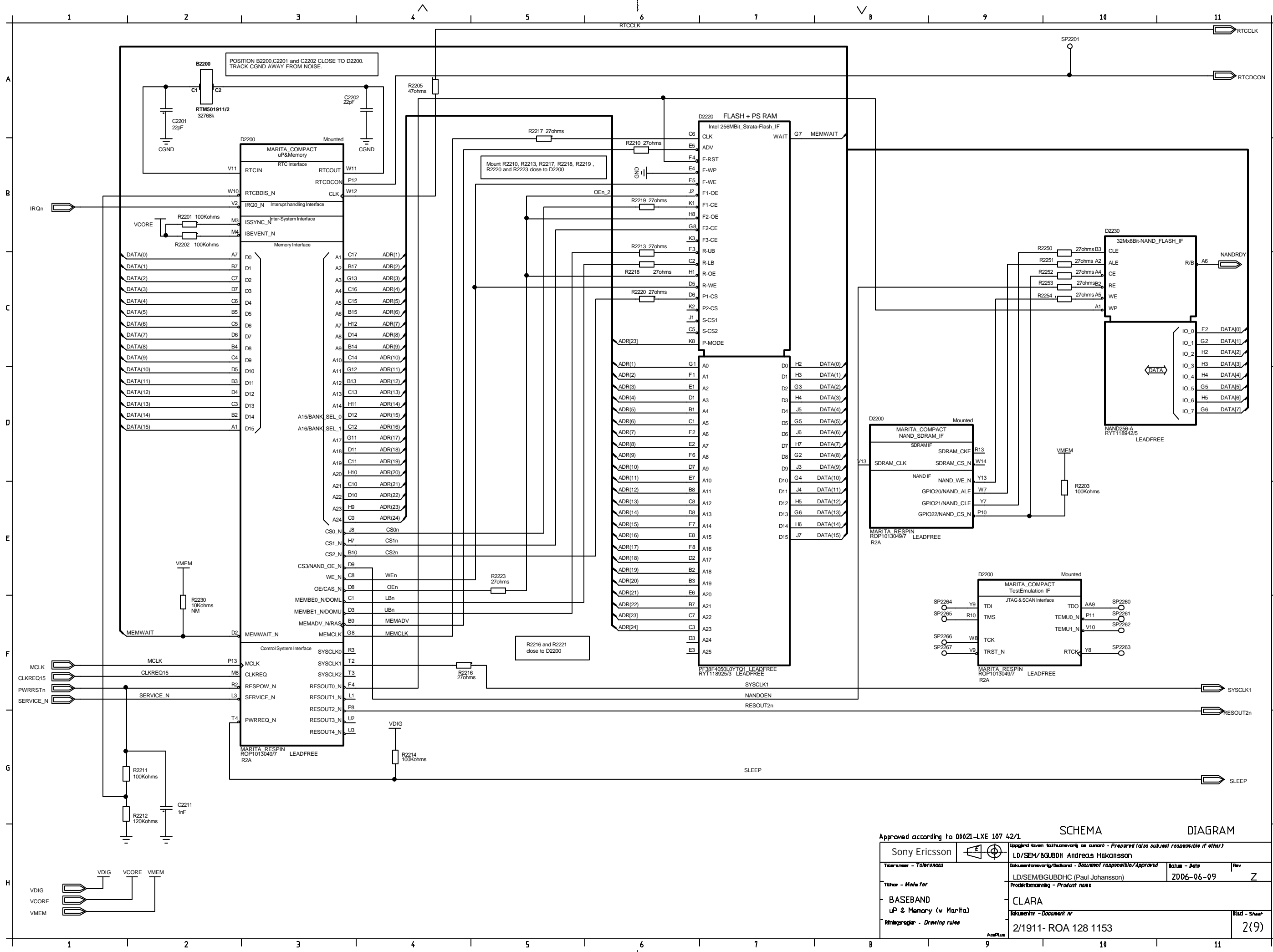


Approved according to 00021-LXE 107 42/1

**SCHEMA**  
**DIAGRAM**

<b>Sony Ericsson</b> <small>Tillämpad för: Tillämpningsområde - Prescribed (also sub-sect responsible if other?)</small> <small>Dokumentansvarig/Backend - Document responsible/Approved</small> <small>Tillver - Made for</small> <b>BASEBAND</b> <small>Produktbenämning - Product name</small> <b>Baseband Top</b> <small>Ändringsregler - Drawing rules</small>		<small>Uppgjord av: Subsystemansvarig ansvaret - Prepared (also sub-sect responsible if other?)</small> <b>LD/SEM/BGUBDH Andreas Hakansson</b> <small>Dokumentansvarig/Backend - Document responsible/Approved</small> <b>LD/SEM/BGUBDH (Paul Johansson)</b> <small>Produktbenämning - Product name</small> <b>CLARA</b> <small>Dokumentnr - Document nr</small> <b>Z/1911- ROA 128 1153</b>	
<small>Titelnummer - Title no</small>	<small>Datum - Date</small>	<small>Rev</small>	<small>Blad - Sheet</small>
	<b>2006-06-09</b>	<b>Z</b>	<b>1(9)</b>

LZF 030 107/F RB

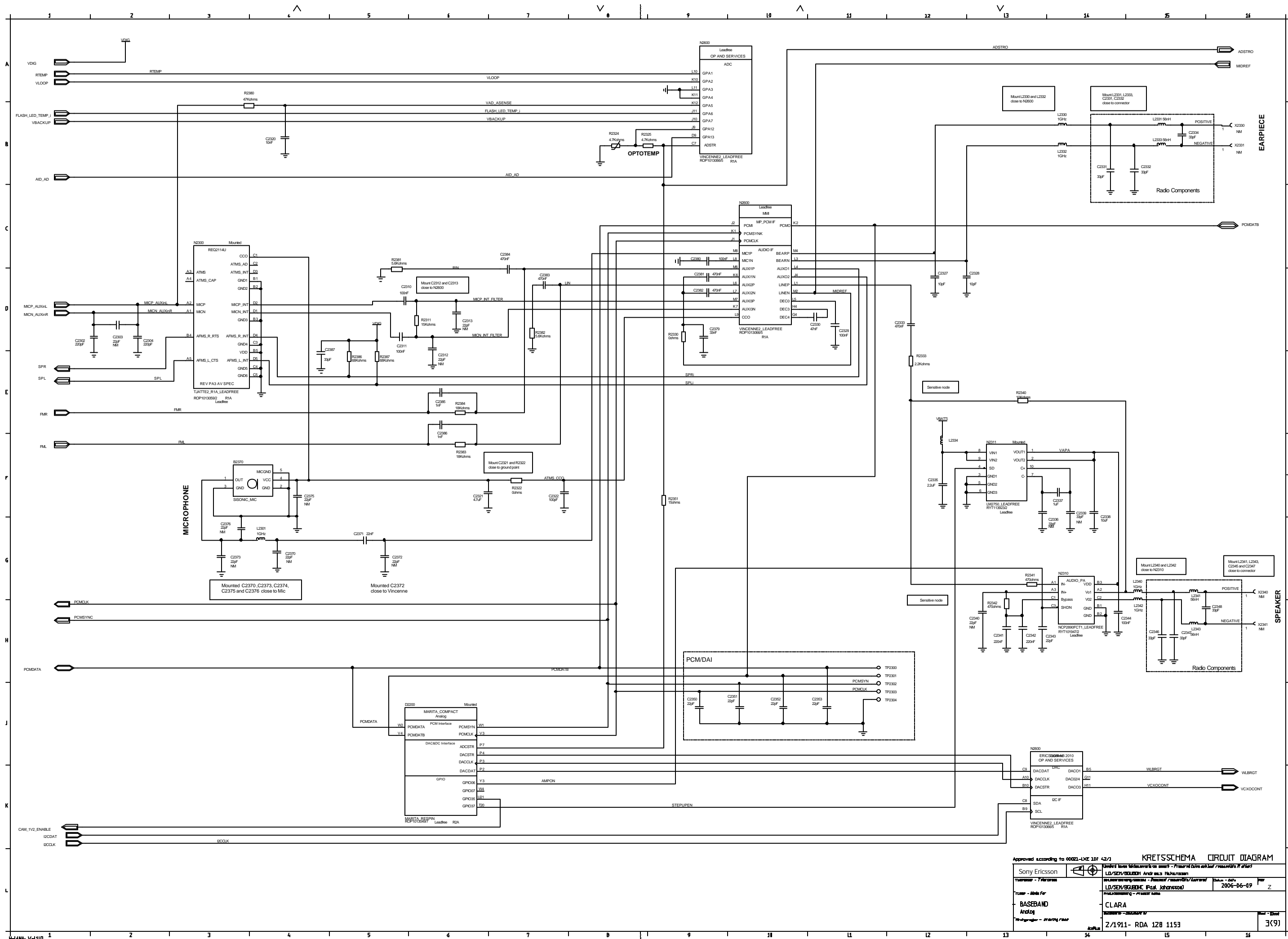


Approved according to 00021-LXE 107 42/1

SCHEMA DIAGRAM

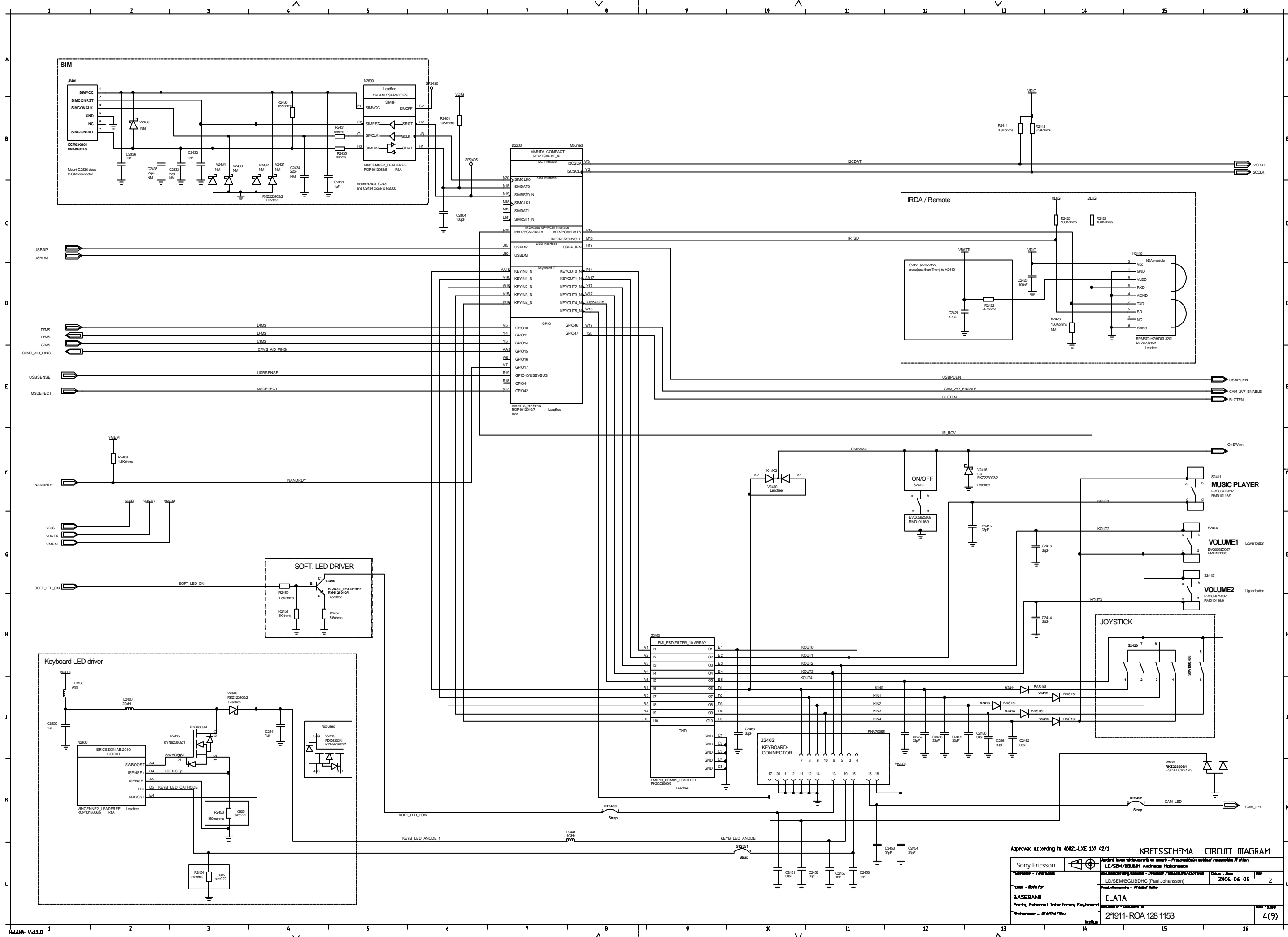
Sony Ericsson <small>Tillämpnings - Tillämpnings</small> <small>Tillämpnings - Tillämpnings</small> <b>BASEBAND</b> <small>uP &amp; Memory (v Marita)</small> <small>Tillämpnings - Tillämpnings</small>		Uppgjord över teknisk ansvar som ansvar - <i>Prepared (also sub-responsible if other)</i> LD/SEM/BGUBDH Andreas Hakansson <small>Dokumentations/Backend - Dokumentations/Backend</small> LD/SEM/BGUBDH (Paul Johansson) <small>Produktbenämning - Product name</small> <b>CLARA</b> <small>Dokumentnr - Document nr</small> 2/1911-ROA 128 1153	
<small>Titel - Title</small> <b>BASEBAND</b> <small>Tillämpnings - Tillämpnings</small>		<small>Datum - Date</small> 2006-06-09	<small>Rev</small> Z
<small>Blid - Sheet</small> 2(9)		<small>Blid - Sheet</small> 2(9)	

LZF 030 107/F RB



Approved according to 00021-LGE 107 42/3		KRETSCHEMA CIRCUIT DIAGRAM	
Sony Ericsson		L2/SCH/000001 Andrus Hultman	
TUM - Abt. für		L2/SCH/000001 Andrus Hultman	
BASEBAND		L2/SCH/000001 Andrus Hultman	
Andrus		L2/SCH/000001 Andrus Hultman	
2/1911- RDA 1Z8 1153		2006-06-09	
3(9)			

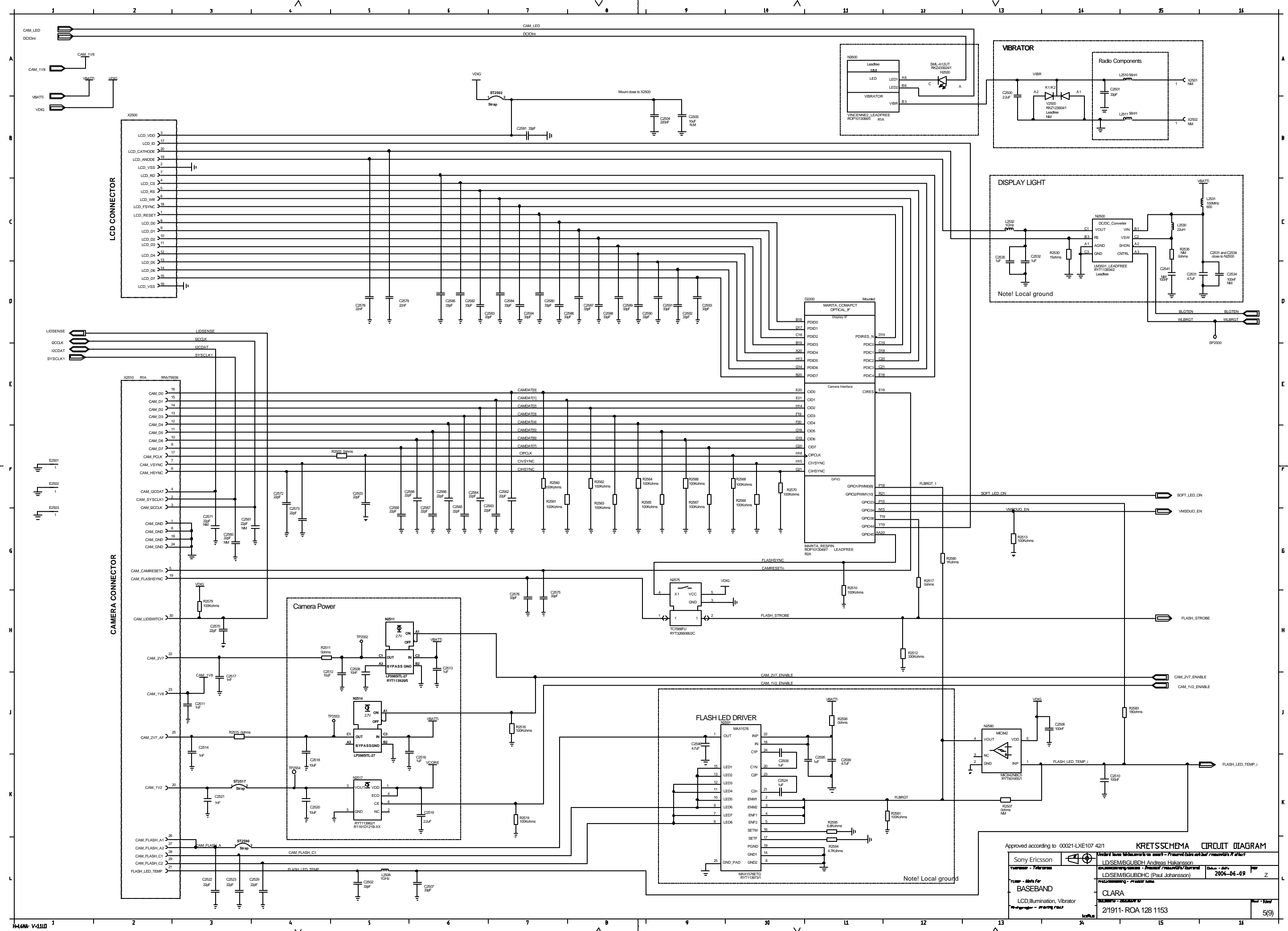
L2/SCH/000001



Approved according to 40821-LXE.107.42/1

KRETS SCHEMA		CIRCUIT DIAGRAM	
Sony Ericsson	Model: L210	Model: L210	Model: L210
Product - Version	LD/SEM/BUSSHD	LD/SEM/BUSSHD	LD/SEM/BUSSHD
Team - Built for	BASEBAND	CLARA	2/1911-ROA 128 1153
Project - Date	2006-06-09	4(9)	

L210 037.1 R1A

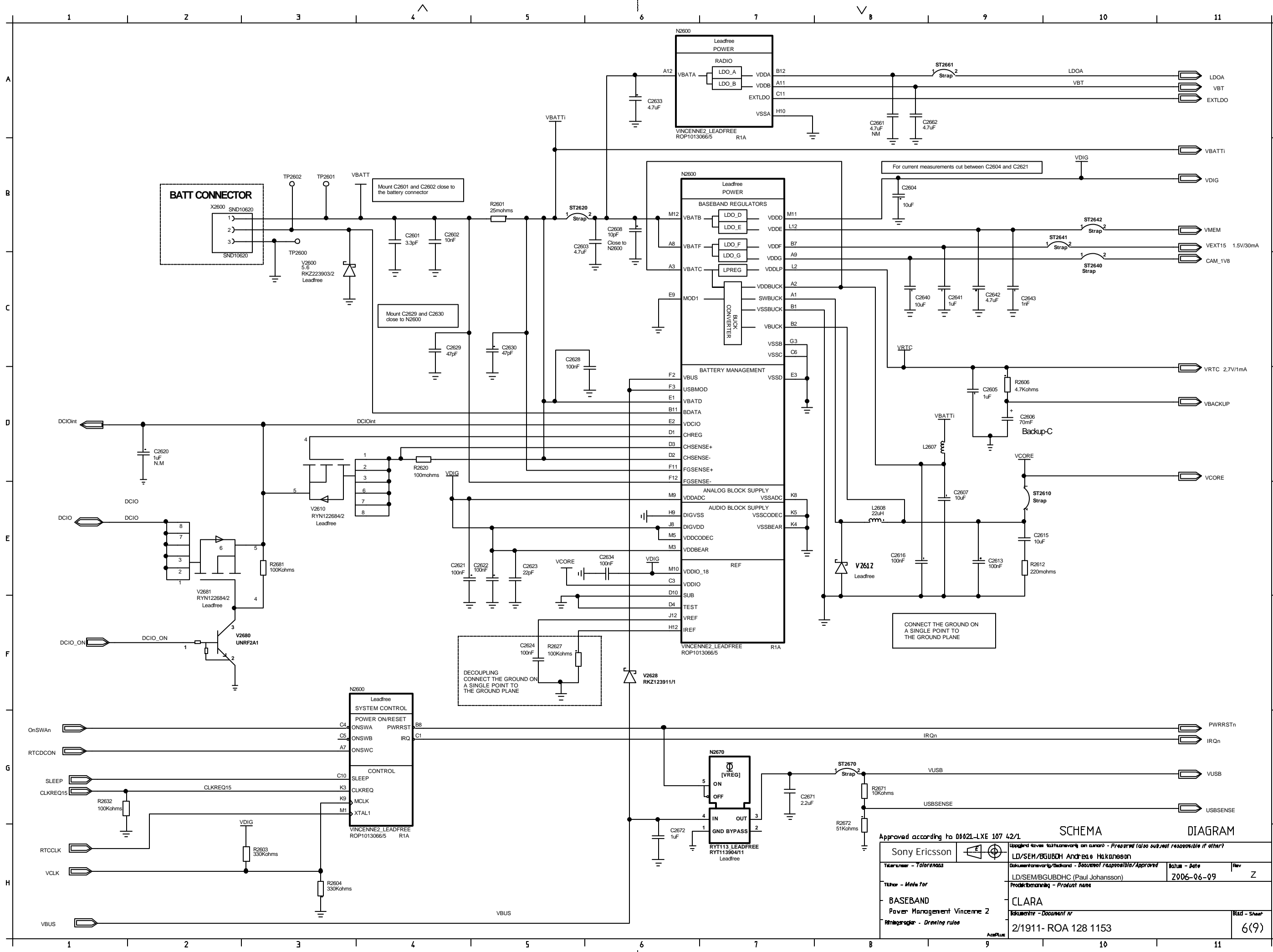


Approved according to 00021-LXE107 42/1

**KRETS SCHEMA**    **CIRCUIT DIAGRAM**

Sony Ericsson	LD/SEM/GUB/DH Andreas Hakansson	Date - 2006-06-09	Z
LD/SEM/GUB/DHC (Paul Johansson)	CLARA	2/1911-ROA 128 1153	5(9)

BASEBAND  
LCD Illumination, Vibrator

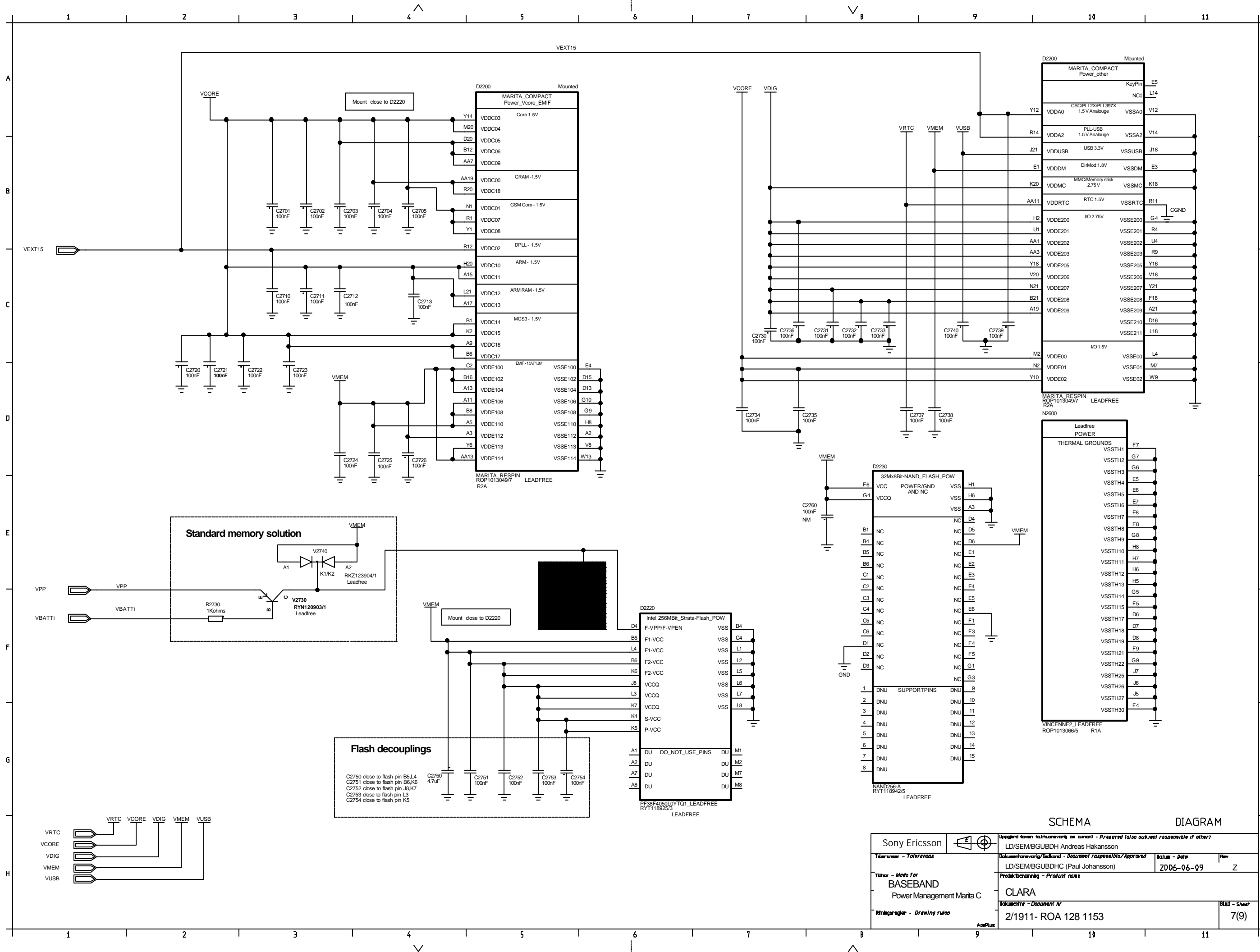


Approved according to 00621-LXE 107 42/1

**SCHEMA DIAGRAM**

<b>Sony Ericsson</b> Tillsvarare - Tolordnings Tillsvarare - Tillsvarare BASEBAND Power Management Vincenne 2 Ritningsregler - Drawing rules		Uppgjord av: <i>tshtuonvark on amano - Presorad (also sub real responsible if other?)</i> LD/SEM/BGUBDH Andrea Halkonen Dokumentations/Backend - <i>Document responsible/Approved</i> LD/SEM/BGUBDH (Paul Johansson) Produktbenämning - <i>Product name</i> CLARA Dokumentnr - <i>Document nr</i> 2/1911- ROA 128 1153	
		Datum - <i>Date</i> 2006-06-09	Rev Z
		Bild - <i>Sheet</i> 6(9)	

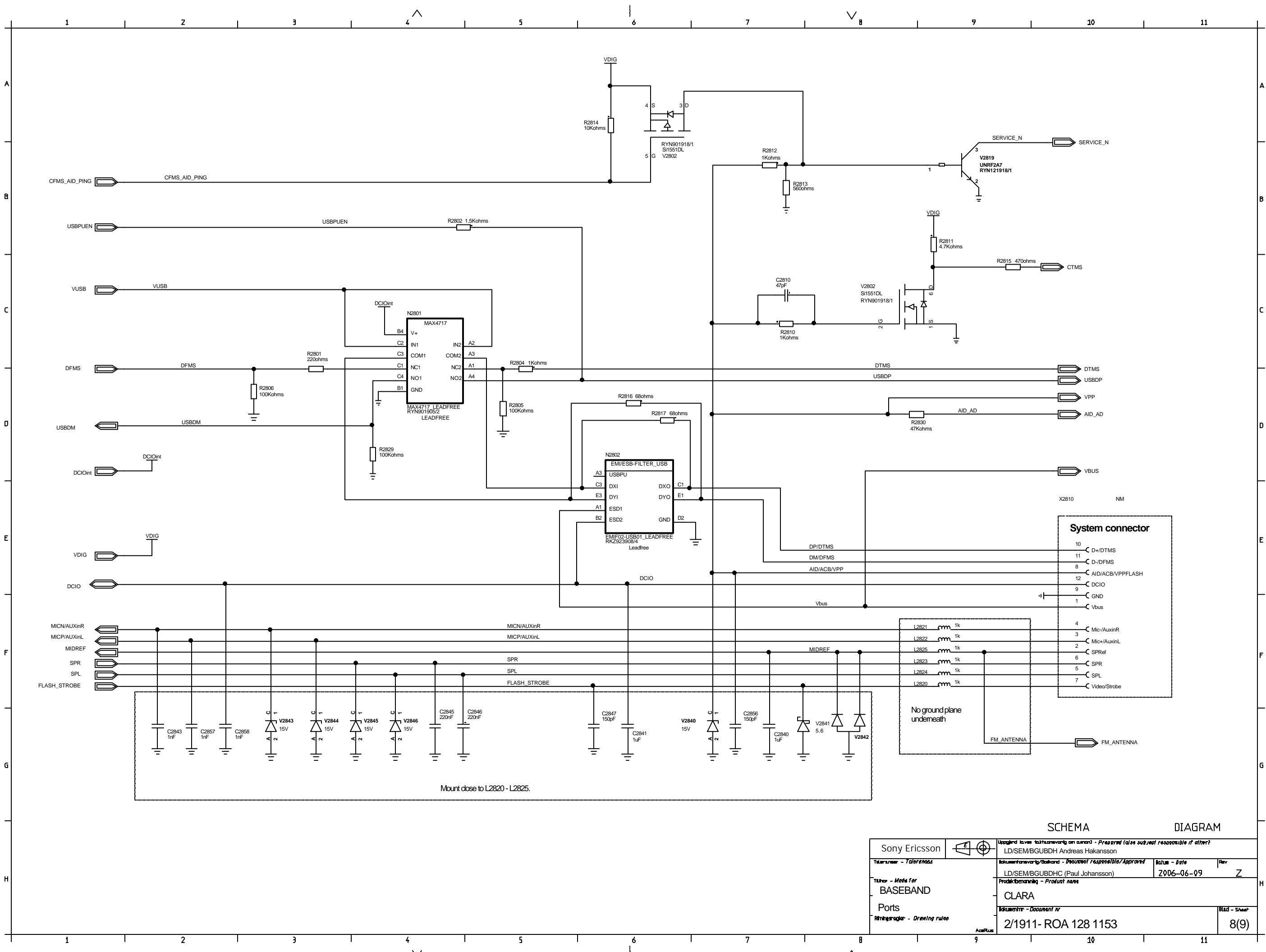
LZF 030 107/F RB



SCHEMA DIAGRAM

<b>Sony Ericsson</b>		Uppgärd över kulturarv är alltid - <i>Preserved (also subject responsible if other)</i> LD/SEMBGUBDH Andreas Hakansson	
Utvärdering - <i>Tolerance</i> Tillsyn - <i>Watch for</i> Basband Power Management Marita C Ritningsregler - <i>Drawing rules</i>	Dokumentations/Backup - <i>Document responsible/Approved</i> LD/SEMBGUBDHC (Paul Johansson)	Datum - <i>Date</i> 2006-06-09	Rev Z
Produktbenämning - <i>Product name</i> <b>CLARA</b>		Dokumentnr - <i>Document nr</i> 2/1911- ROA 128 1153	
Ritningsregler - <i>Drawing rules</i>		Bild - <i>Sheet</i> 7(9)	

LZF 030 102/F RB

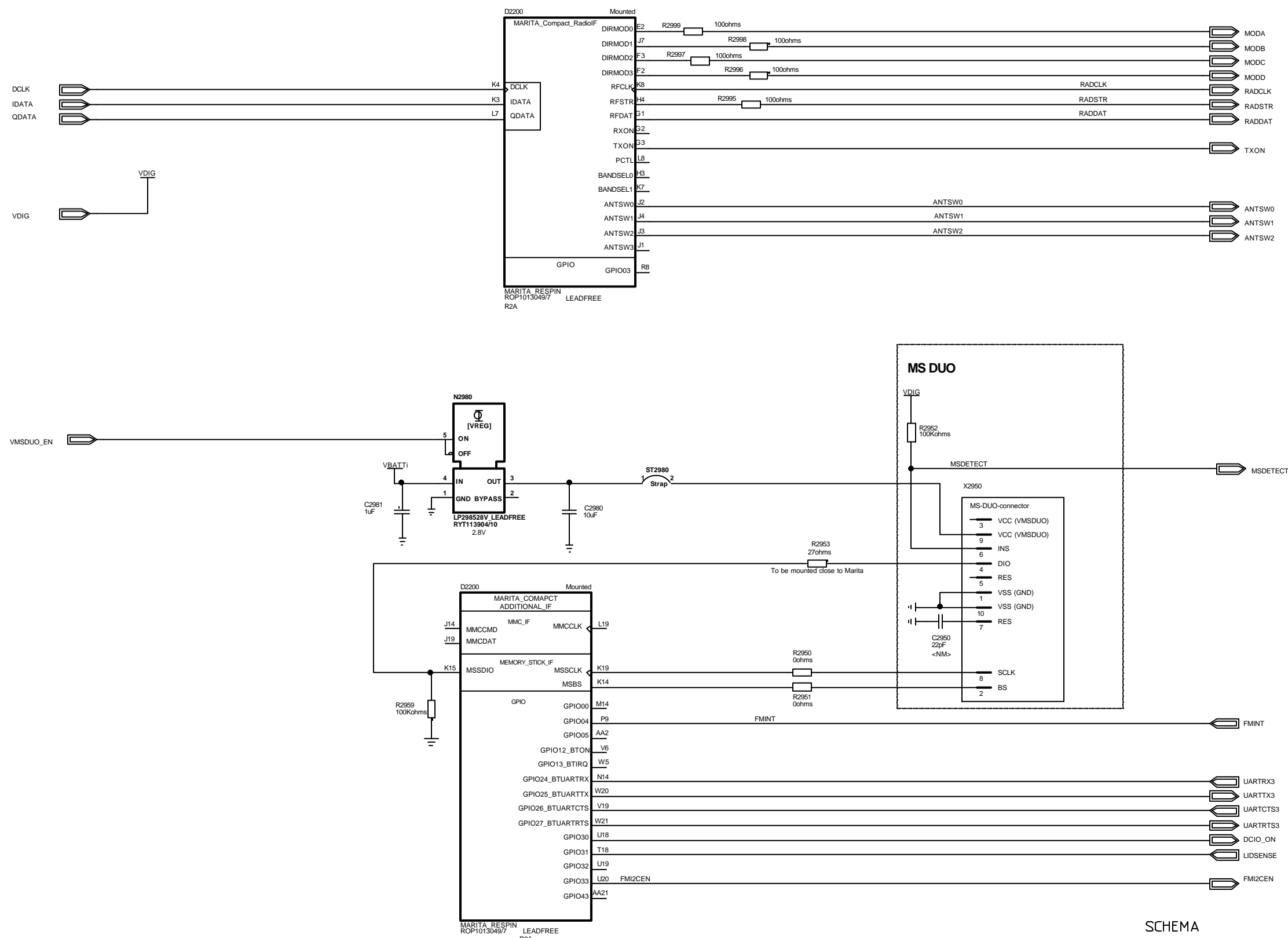


SCHEMA DIAGRAM

<b>Sony Ericsson</b>		Uppgjord lever tillställnings anmälan - <i>Prepared for submittal</i> responsible if other?	
Tillsvarare - <i>Tillställnings</i>		LD/SEMBGUBDH Andreas Hakansson	
Tillsvarare - <i>Modul</i>		Dokumentations/Bestånd - <i>Document responsible/Approved</i>	
Tillsvarare - <i>Modul</i>		LD/SEMBGUBDHC (Paul Johansson)	
Tillsvarare - <i>Modul</i>		Produktion/Anlägg - <i>Production</i>	
Tillsvarare - <i>Modul</i>		CLARA	
Tillsvarare - <i>Modul</i>		Dokument - <i>Document nr</i>	
Tillsvarare - <i>Modul</i>		2/1911- ROA 128 1153	
Tillsvarare - <i>Modul</i>		Bild - <i>Sheet</i>	
Tillsvarare - <i>Modul</i>		8(9)	

LZF 030 107/F RB





SCHEMA DIAGRAM

<b>Sony Ericsson</b>		Uppgjord över tillämpnings anordning - <i>Prepared (also subject responsible if other?)</i> LD/SEMBGUBDH Andreas Hakansson	
Tillsvar - <i>Tolerance</i> Tillsvar - <i>Meets for</i> BILDNINGEN - <i>Drawing rules</i>	Dokumentations/teckning - <i>Document responsible/Approved</i> LD/SEMBGUBDHC (Paul Johansson)	Datum - <i>Date</i> 2006-06-09	Rev Z
BASEBAND MSDUO/ RADIO		CLARA Dokument nr - <i>Document nr</i> 2/1911- ROA 128 1153	
		Bild - <i>Sheet</i> 9(9)	