

# ***SERVICE GUIDE***

**KYE** SYSTEMS CORP.



**SW-HF5.1 4000**

**Version:1.0**

**Total 18 Pages (Cover Page included)**

**Revision History**

Version	Date	Changes
1 . 0	Official Release	

**Table of Contents**

Revision History.....1

Table of Contents.....2

**Getting Started.....3**

    Conventions Used in this Guide.....3

    Safety Precautions.....3

**Chapter1. How to Handle Defective Returns.....4**

    1.1 Overview.....4

    1.2 Problems.....5

        1.2.1 Power LED (indicator) Unlight.....6

        1.2.2 Does not work or one channel no sound.....7

        1.2.3 Noise.....7

**Chapter2. Specifications.....8-9**

**Chapter3. Block Diagram.....10**

**Chapter4. Exploded View.....11-12**

**Chapter5. Part List.....13-14**

**Chapter6. Important Notes.....15**

    6.1 Packing Requirement for sending the PCB Assembly by post.....15

    6.2 Short of Spare Parts while Repairing a Speaker System.....15

**Chapter7. Circuit Schematic.....16-18**

## Getting Started

### Conventions Used in this Guide

---



**Attention**

**Pay Special Attention: Instructions that are important to remember and may prevent mistakes.**



**Caution: Information that, if not followed, may result in damage to the product.**

### Safety Precautions

---

The following precautions should be observed in handling the speaker described in this guide:

Place the speakers on a flat, level and stable surface.

Do not place the speakers in environments subject to mist, smoke, vibration, excessive dust, salty or greasy air, or other corrosive gases and fumes.

Do not drop or jolt the speakers.

Do not allow anything to drop into the subwoofer case through its ventilator, as it could result in fatal electric shock or fire.

Place the unit far enough from other equipments for good heat dissipation.

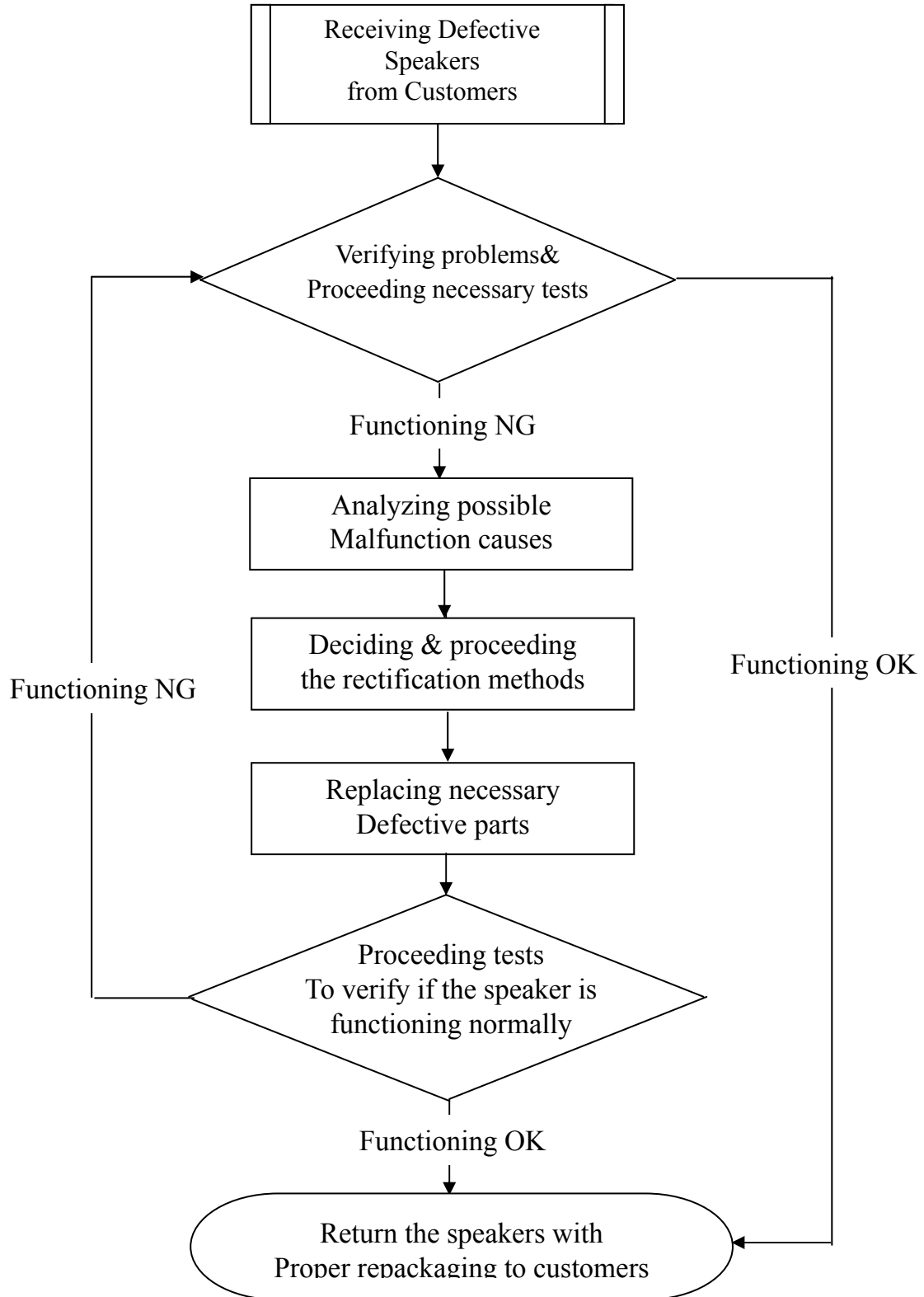
Disconnect the AC power cord from the AC outlet before performing any maintenance on the speakers.

Do not perform any maintenance with wet hand.

Prevent foreign substance, such as water, other liquids or chemicals, from entering the speakers while performing maintenance procedures on the speakers.

**Chapter 1. How to Handle Defective Returns**

**1.1 Overview**



## 1.2 Problems

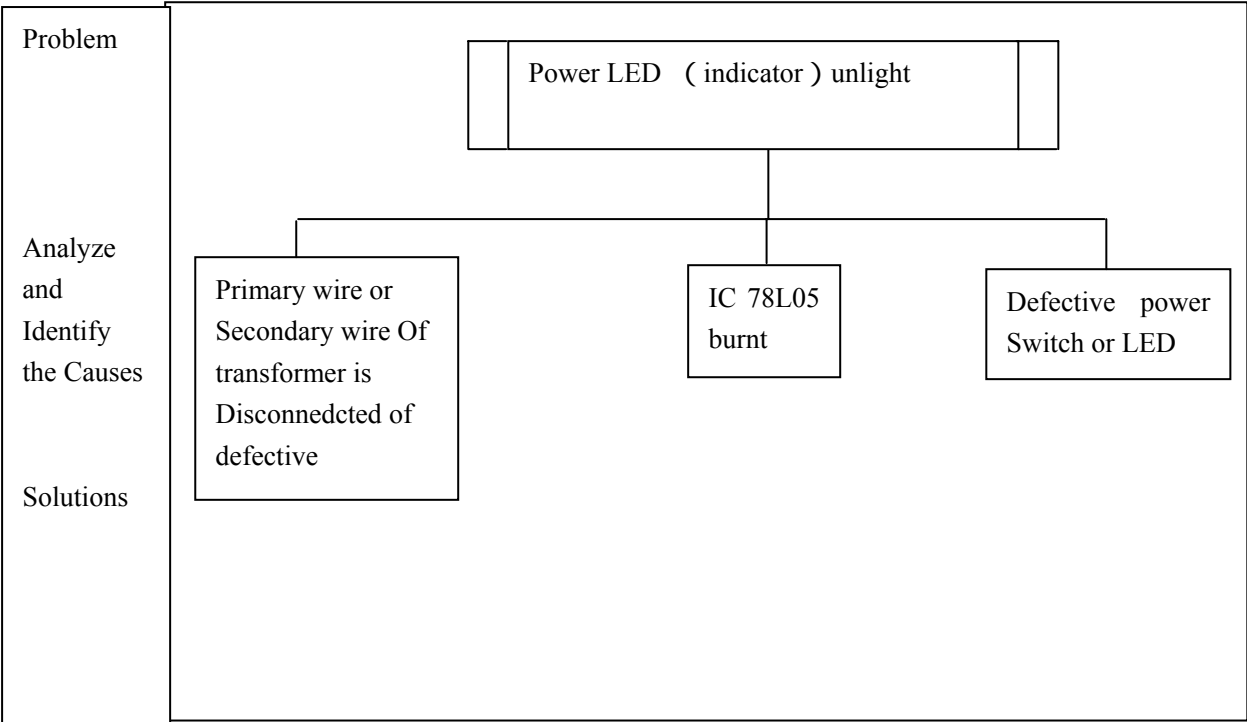
<b>Item</b>	<b>Problem descriptions</b>
1.2.1	<u>Power LED (indicator) unlight</u>
1.2.2	<u>Does not work or one channel no sound</u>
1.2.3	<u>Noise</u>

Please follow the numbered sequence marked withing parenthesis given in individual Flow chart, in that this is the best-recommended sequence to rectify the problems.

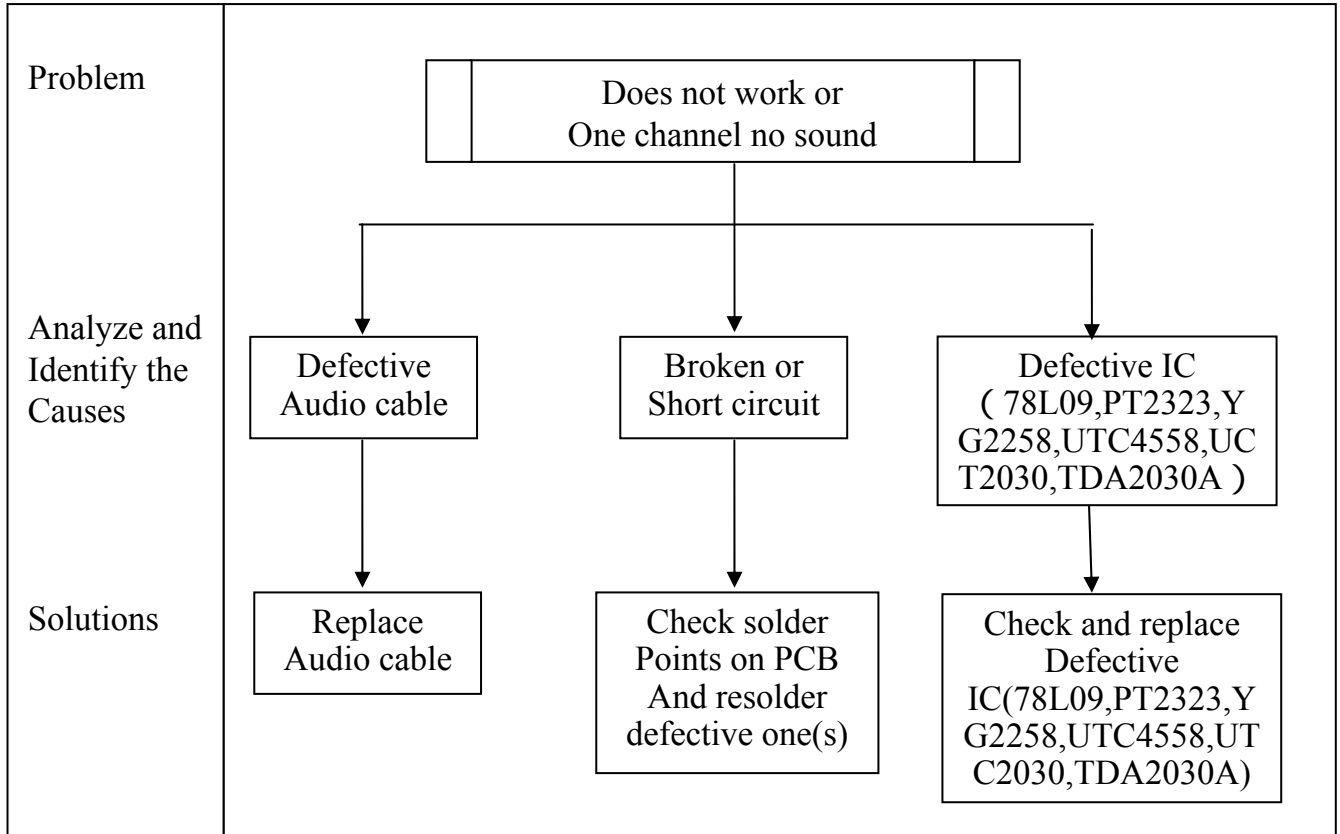


**Attention**

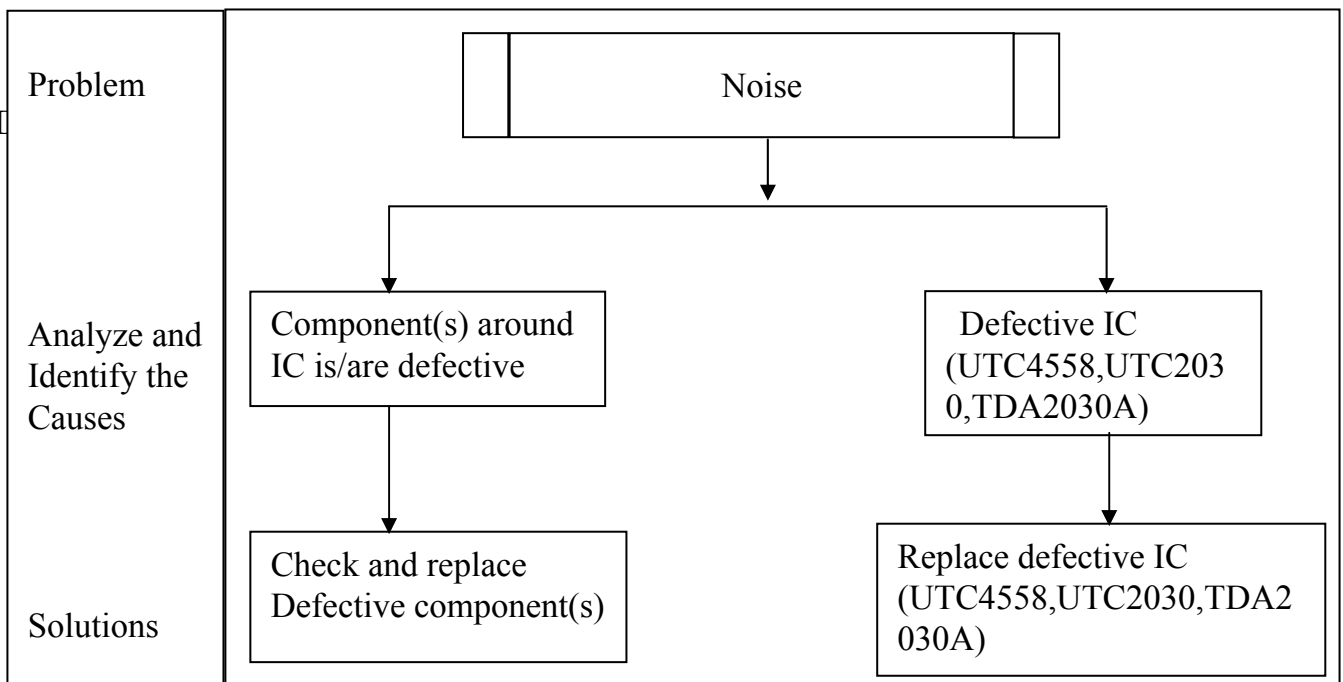
**1.2.1 Power LED (indicator) unlight**



1.2.2 Does not work jor jone channel no sound



1.2.3 Noise





**Chapter 2. Specifications**

**Satellite**

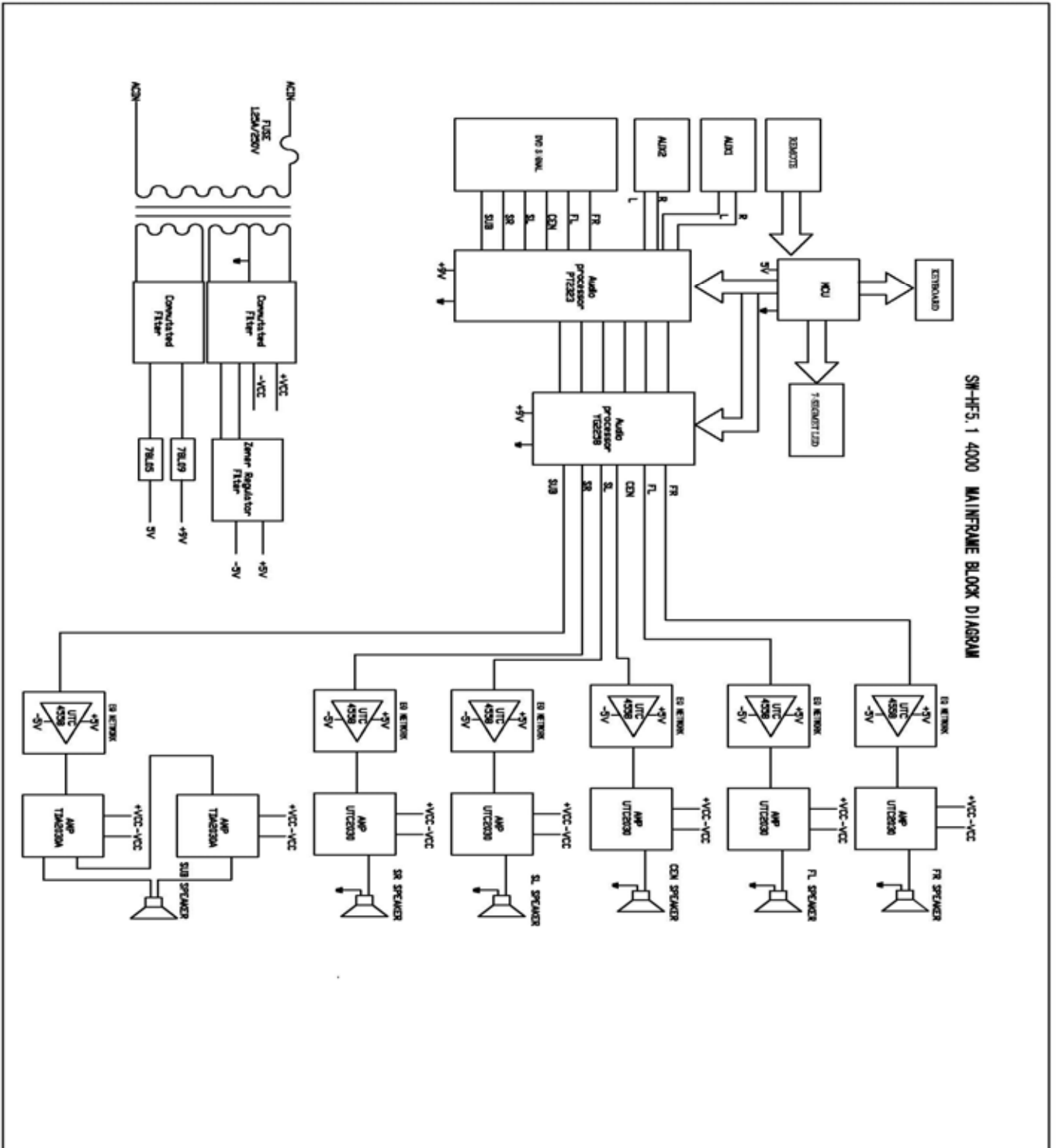
No	DESCRIPTION	UNIT	NOMINAL					LIMIT	
			CEN	FR	FL	SR	SL		
1.	RATED OUTPUT POWER @THD 10%	W	20	20	20	20	20	> 15	
2	SENSITIVITY ( 1KHz ) @RATED O/P POWER	mV	410	620	620	390	390	± 50	
3	SENSITIVITY(1KHz)@1W O/P POWER	mV	78	130	130	76	76	± 30	
4	MAX INPUT LEVEL@1% THD	mV	320	510	510	290	290	± 40	
5	FREQUENCY RESPONSE(1KHz=0dB)	+3 dB	Hz	127	120	120	130	130	± 20
		0 dB	KHz	1	1	1	1	1	
		-3 dB	KHz	60	95	95	70	70	> 20
6	S/N @RATED O/P POWER	dB	80	83	83	80	80	65	
7	CHANNEL UNBALANCE @REF O/P POWER	dB	0.2	0.2	0.2	0.2	0.2	0.5	
8	CHANNEL SEPARATION(ONE CHANNEL IN; OTHER CHANNEL INPUT SHORTING)	dB	55	55	55	55	55	40	
9	HUM NOISE (VR MAX) (VOLUME MAX; INPUT SHORTING)	mV	0.9	0.6	0.6	0.9	0.9	4	
10	HUM NOISE (VR MIN) (VOLUME MIN. INPUT SHORTING)	mV	0.5	0.4	0.4	0.5	0.5	3	

**Chapter 2. Specifications**

**Subwoofer**

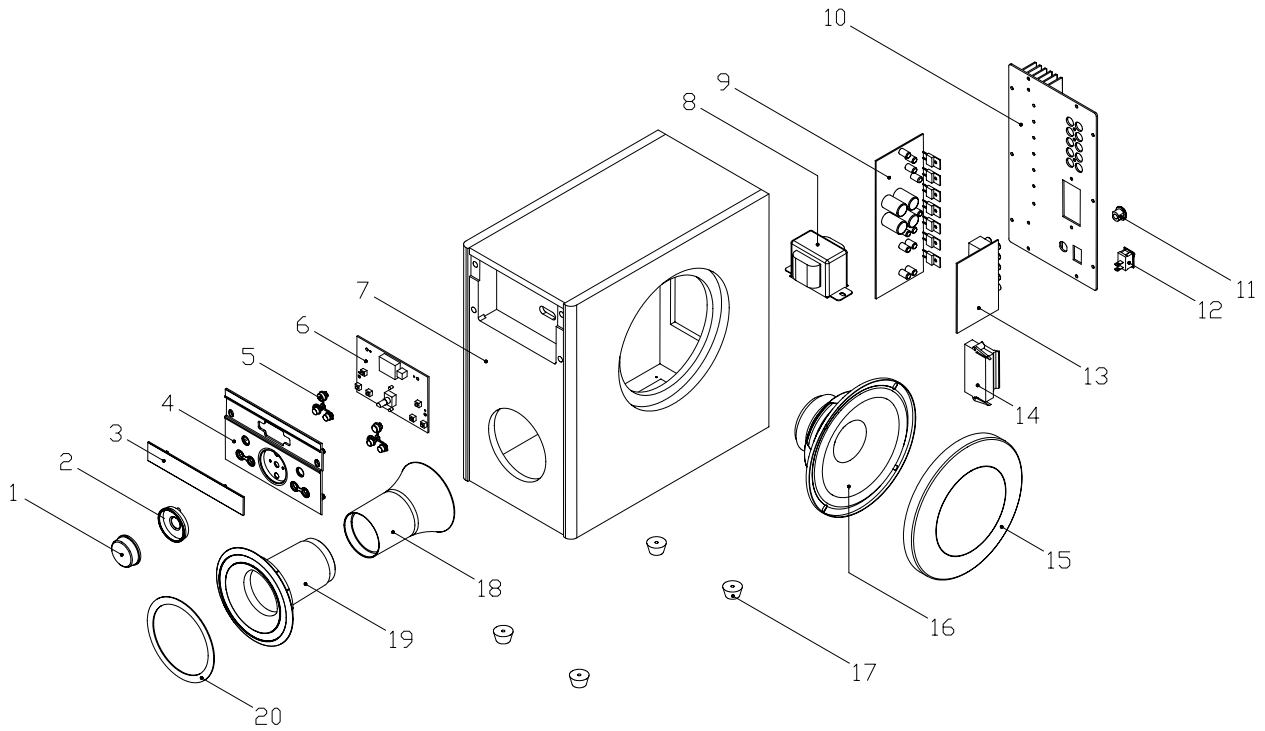
No.	DESCRIPTION	UNIT	NOMINAL	LIMIT
1.	RATED OUTPUT POWER @100Hz ( 10%THD)	W	38	25
2	SENSITIVITY ( 100Hz ) @RATED O/P POWER	mV	100	± 30
3	SENSITIVITY(1KHz)@1W O/P POWER	mV	14	± 20
4	MAX INPUT <a href="#">LEVEL @ 1%</a> THD	mV	76	± 30
5	DISTORTION @100Hz REF. O/P POWER	%	0.1	1
6	CROSSOVER FREQUENCY			
		LOW Hz	15	± 20
		HI Hz	209	± 30
7	S/N RATIO @100Hz RATED O/P POWER	dB	76.5	65
8	VR MIN NOISE	mV	1.5	3
9	VR MAX NOISE & HUM	mV	2.5	5

Chapter 3. Block Diagram

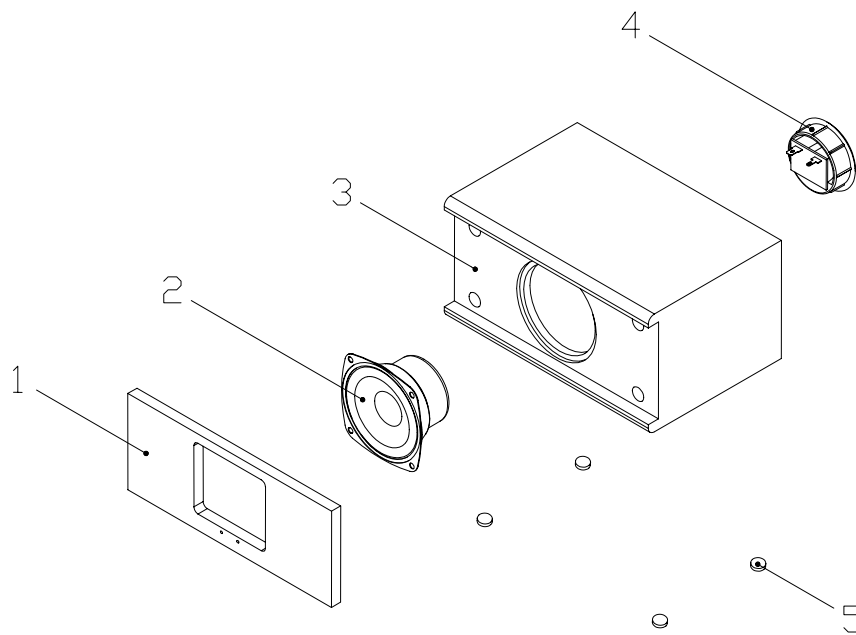


**Chapter 4. Exploded View**

**Subwoofer**

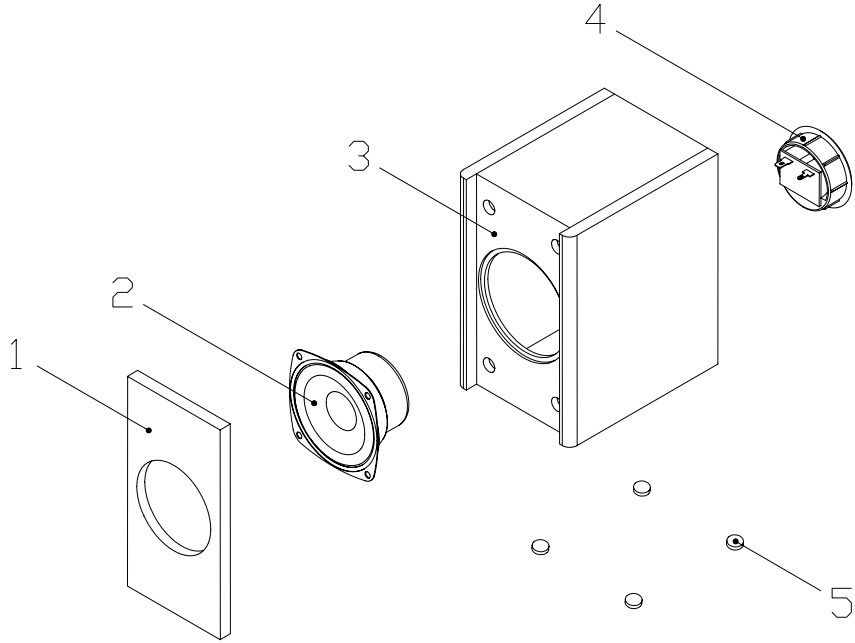


**Center-Satellite**

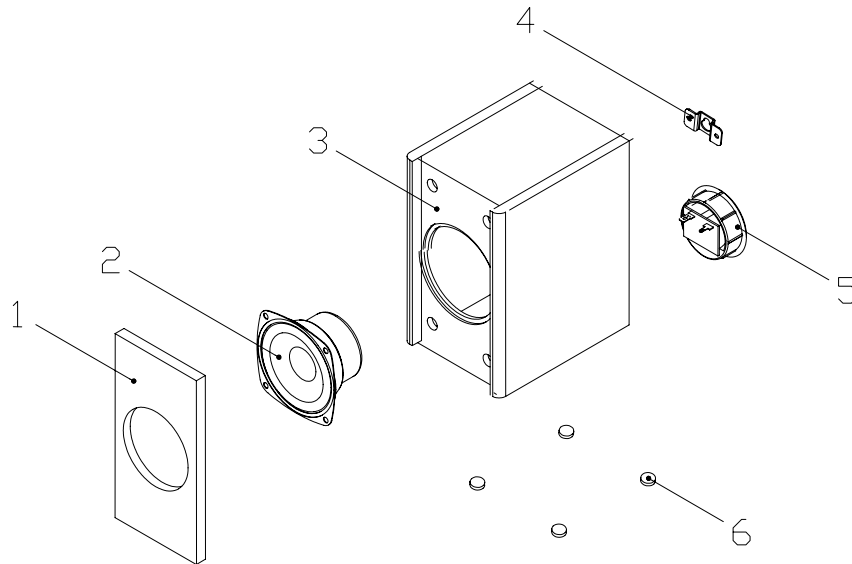


**Chapter 4. Exploded View**

**Front-Satellite**



**Back-Satellite**



**Chapter 5. Part List**

**Subwoofer**

Ref. No.	Description	RS Part No.	Part No.
1	Knob, ABS, Silver Color		01070ABS81005G38
2	Lead-Aperture, PMMA, Lucidity Color		0113PMMAA0006G01
3	Eyeglass, PMMA, Lucidity And Black Color		0113PMMAA0008G01
4	Panel, ABS, Black Color, White Silk-screen		01020ABS08035G01
5	Key press, ABS, Silver Color		01070ABS81005G37
6	Control PCBA		180200194V001G01
7	Wood-box, 9T MDF And 12T MDF, Grainy PVC		9401030012440G02
8	Transformer, I/P: 230V 50Hz, O/P: AC12.5V*2/3A		2226400020002G01
9	Power PCBA		180107594V001G01
10	Back board, AL, Black Color		0402031001296G01
11	Wire Buckle, 4K-4, Black Color		01160ABS00003G01
12	Switch, 2Pin, 250V/6A, Black Color		2460250060001G01
13	Input PCBA		180400294V001G01
14	Output PCBA		181012094V001G01
15	Metal Net, SPCC, Black Color		0601010607058G02
16	Speaker, 6.5" 8Ω 40W		084040086B212G02
17	Rubber Foot, Black Color		4210240001040G01
18	Wind-Pipe (Inside), HIPS, Black Color		0106HIPS00058G01
19	Wind-Pipe (Outside), HIPS, Black Color		0106HIPS01075G01
20	Adorning Ring, PMMA, Lucidity And Black Color		0113PMMAA0007G02
21	IC, SN8P 2613		210SN8P2613CHG01
22	IC, 78L05		21100078L05ABG01
23	IC, 78L09		21100078L09ABG01
24	IC, PT2323 SOP		21100PT2323ABG01
25	IC, YG2258 DIP		21100YG2258ABG01
26	IC, MC4558 (UTC)		21100MC4558CHG01
27	IC, TDA2030 (UTC)		2110TDA2030CHG01
28	IC, TDA2030A		211TDA2030ACHG01

**Chapter 5. Part List**

**Center-Satellite**

Ref. No.	Description	RS Part No.	Part No.
1	Net Board, MDF, Black Color		9110200082120G01
2	Speaker, 3" 4Ω 15W		0810150403112G05
3	Wood-box, 9T MDF And 5T MDF, Grainy PVC		9411040021500G01
4	Terminal, Red Color And Black Color		2032123016821G01
5	Rubber Foot, Black Color		4311015540004G01

**Front-Satellite**

Ref. No.	Description	RS Part No.	Part No.
1	Net Board, MDF, Black Color		9110160082100G01
2	Speaker, 3" 4Ω 15W		0810150403112G05
3	Wood-box, 9T MDF And 5T MDF, Grainy PVC		9411040021350G01
4	Terminal, Red Color And Black Color		2032123016821G01
5	Rubber Foot, Black Color		4311015540004G01

**Back-Satellite**

Ref. No.	Description	RS Part No.	Part No.
1	Net Board, MDF, Black Color		9110160082100G01
2	Speaker, 3" 4Ω 15W		0810150403312G01
3	Wood-box, 9T MDF And 5T MDF, Grainy PVC		9411040021350G02
4	Pothook Slice, SPCC, Black Color		0404010301004G01
5	Terminal, Red Color And Black Color		2032123016821G01
6	Rubber Foot, Black Color		4311015540004G01

## **Chapter 6. Important Notes**

### **6.1 Packing requirement for sending the PCB assembly by post**

PCB assembly is a kind of sophisticated electronic circuit board. Well packing Will be required when sending them by post.

\*Some sophisticated IC components are mounted on the PCB assembly, hence it is necessary to pack each PCB assembly with a separate static protecting bag, in order to avoid static electricity.

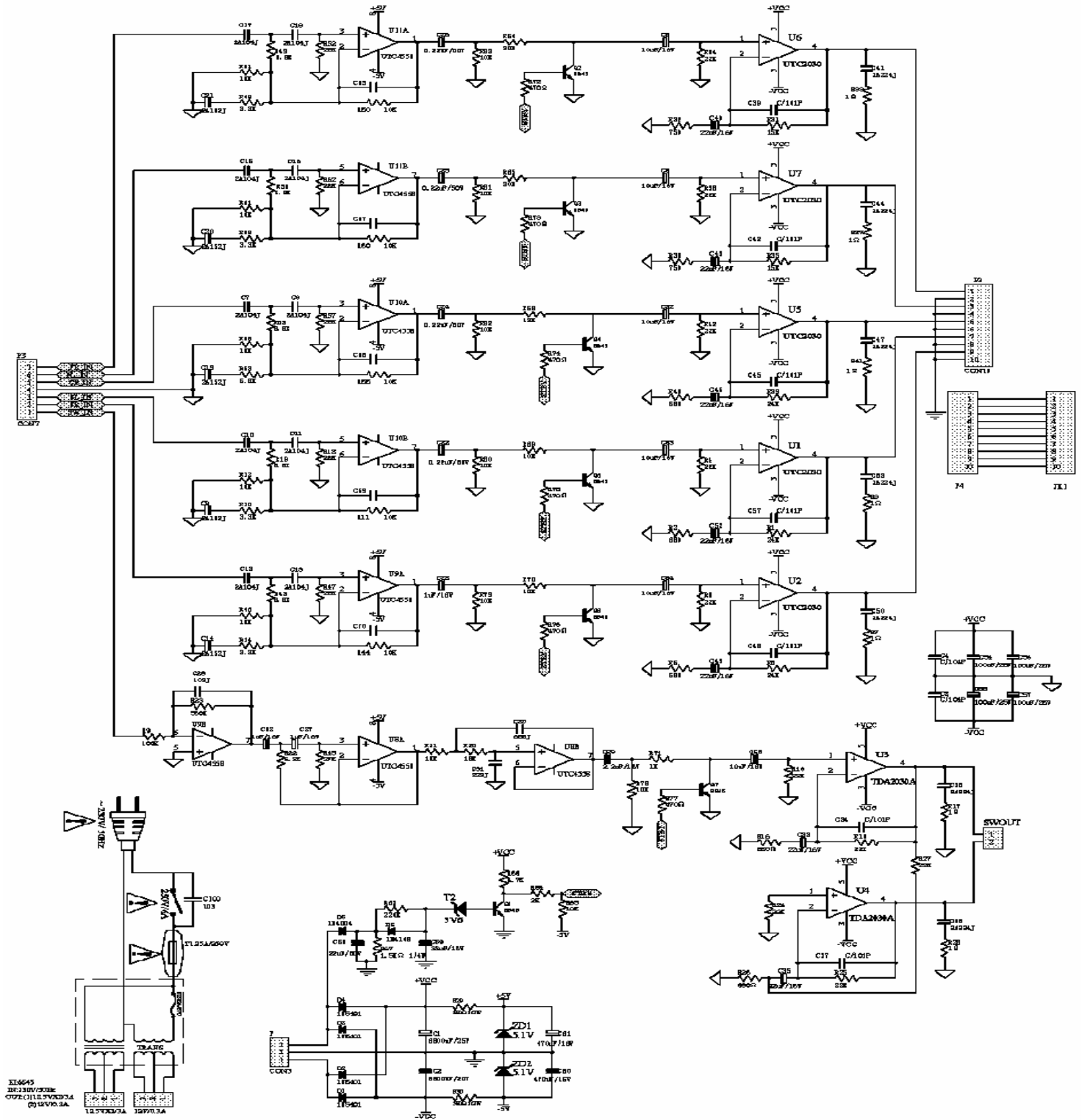
\*Reliable external packing is also very important when sending the PCB assembly by post, in that it would avoid unnecessarily lost or damage.

### **6.2 Short of spare parts while repairing a speaker system**

If you are short of spare parts when you have some speaker systems waiting to be repaired, it would be recommended to take the necessary parts from one Speaker system, so that you may have the as many speaker systems

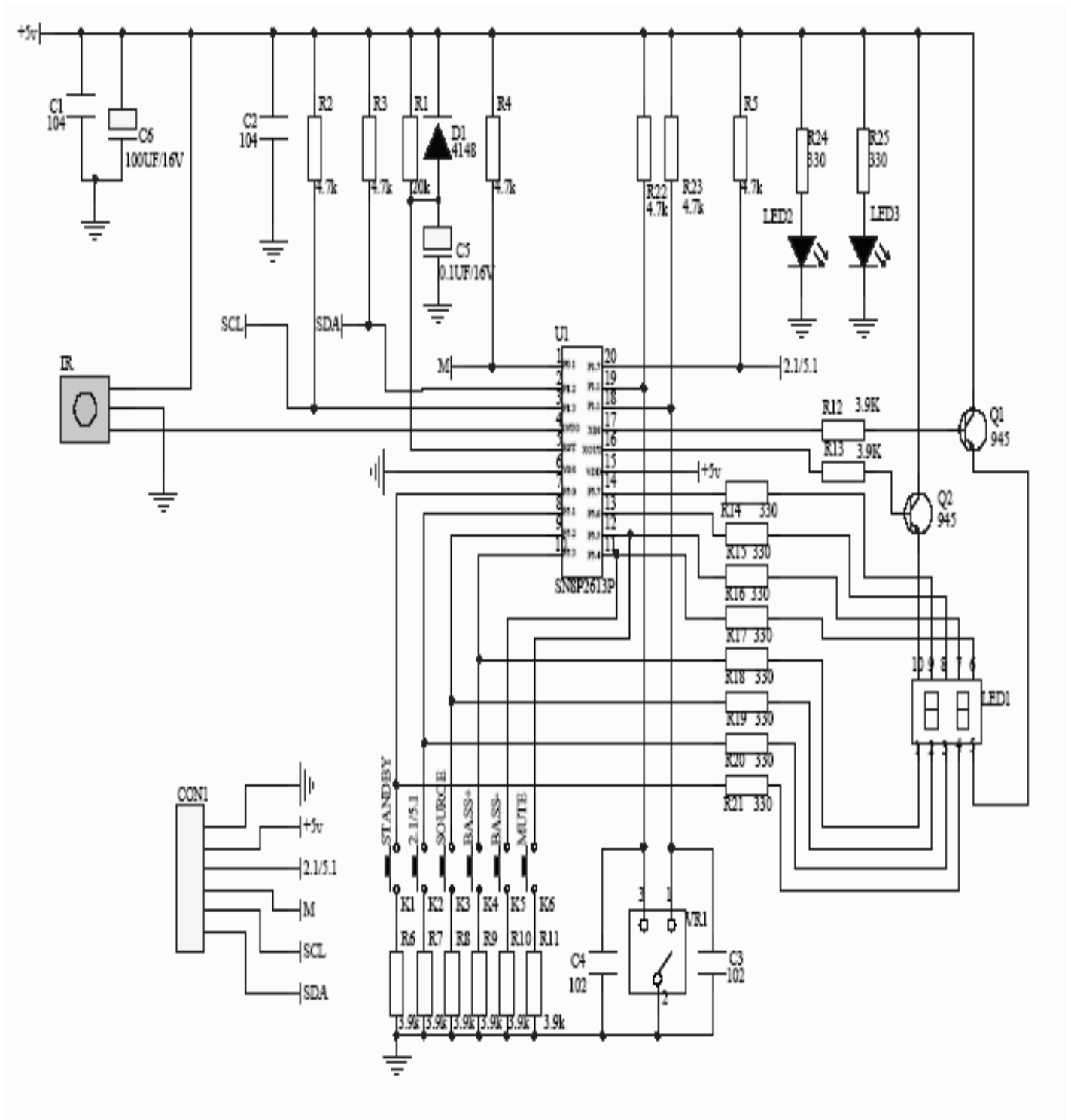


**Chapter 7. Circuit schematic**



**Chapter 7. Circuit schematic**

2



Chapter 7. Circuit schematic

3

