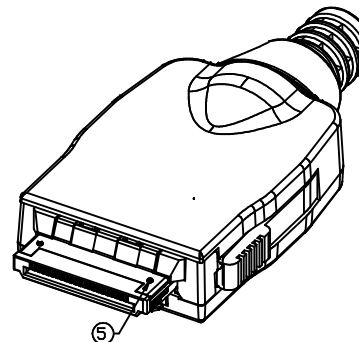
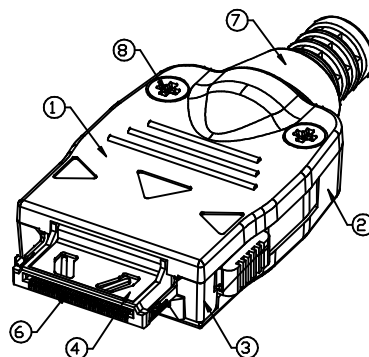
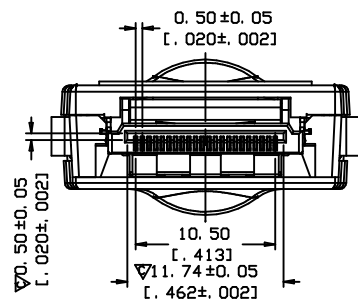
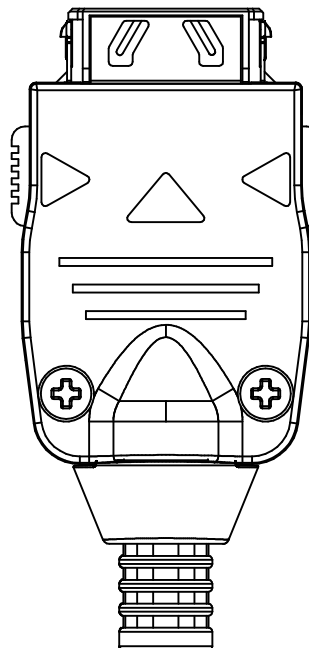
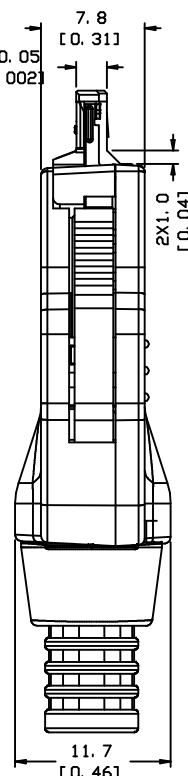
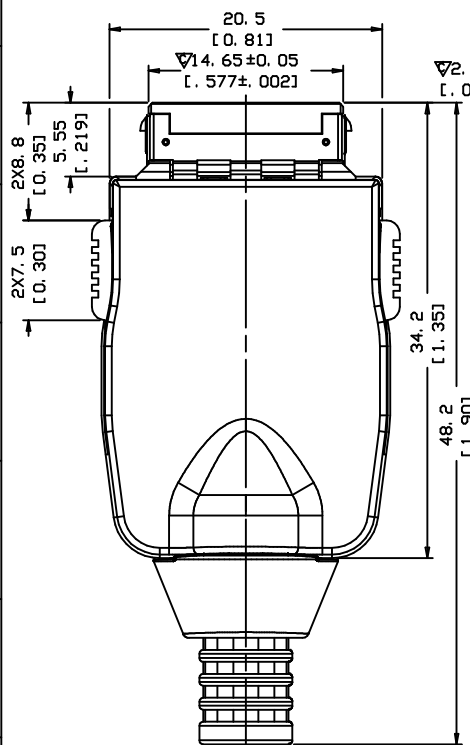


REV.	ECN. NO.	APPD.
A	IC014223	Chen Hu SHIH



NOTES:

1. ELECTRICAL CHARACTERISTICS:
 - 1-1. LOW LEVEL CONTACT RESISTANCE: 110 mΩHMS MAX. (INITIAL).
 - 1-2. INSULATION RESISTANCE: 1000 MΩHMS MIN. (INITIAL).
 - 1-3. DIELECTRIC WITHSTANDING VOLTAGE: 150 V AC MIN. FOR 1 MINUTE.
 - 1-4. CURRENT RANGE: 0.5 A MAX. PER CONTACT.
2. MECHANICAL CHARACTERISTICS:
 - 2-1. DURABILITY: 10,000 MATING/UNMATING CYCLES.
 - 2-2. UNMATING FORCE WITHOUT RELEASING HOOK: 5.0 Kgf MIN.
 - 2-3. OPERATING TEMPERATURE: -35°C TO +65°C.
 - 2-4. STORAGE TEMPERATURE: -40°C TO +70°C.
3. ▽CRITICAL DIMENSIONS, ▽MAJOR DIMENSIONS.



8	SCREW	2	STAINLESS STEEL C1006	COLOR: BLACK	
7	SR	1	THERMOPLASTIC UL 94V-0	MOLDED COLOR: BLACK	
6	CONTACT	22	PHOSPHOR BRONZE	NICKEL PLATING OVERALL, THICKNESS: 50~90 μ", TIN/LEAD PLATING OVER NICKEL AT SOLDER AREA THICKNESS: 100~200 μ", GOLD PLATING OVER NICKEL AT CONTACT AREA THICKNESS: 30 μ" MIN.	
5	BOTTOM SHELL	1	STAINLESS	TIN/LEAD PLATING AT SOLDER AREA THICKNESS: 100~200 μ",	
4	TOP SHELL	1	STAINLESS	TIN/LEAD PLATING AT SOLDER AREA THICKNESS: 100~200 μ",	
3	HOUSING	1	THERMOPLASTIC UL 94V-0	MOLDED COLOR: BLACK	
2	BOTTOM COVER	1	THERMOPLASTIC UL 94V-0	MOLDED COLOR: BLACK	
1	TOP COVER	1	THERMOPLASTIC UL 94V-0	MOLDED COLOR: BLACK	
ITEM	DESC.	Q'TY	MATERIAL	FINISH	REMARK
X. ±	X*. ±	UNITS [INCH]	NAME (INTENDED USE)	FOXCONN HON HAI PRECISION IND. CO., LTD. TAIPEI, TAIWAN, R.O.C.	
.X ± [0.30 [0.012]	.X* ±	MAT'L	CUSTOMER		
.XX ± [0.20 [0.007]	.XX* ±		PART NO. (INTENDED USE)	TITLE: CUSTOMER: 22 POS. CABLE END 0.50 PITCH CONNECTOR	
.XXX ±	.XXX* ±	FINISH	QV00223-A01		
THESE DRAWINGS AND SPECIFICATIONS ARE THE PROPERTY OF HON HAI PRECISION IND. CO., LTD. AND SHALL NOT BE REPRODUCED COPIED OR USED IN ANY MANNER WITHOUT THE PRIOR WRITTEN CONSENT OF HON HAI PRECISION IND. CO., LTD.			APPD: CHEN HU SHIH 09/26/01	DWG NO.: 373-0000-003	
			CHKD: H. GAO 09/25/01		
			DR: Kang Lee 09/24/01		
			Q'TY	SCALE	SHEET 1/1
				REV.	A