

**SOFTWARE OPERATION**  
**MANUAL FOR RATEX**  
**BOARD**

## Installation

After running the setup file, a RATEX file is installed in your Program Files. Click it to execute the program. A window with title “RateX” appears for your editing. The first thing to do is to set the parameters correspond to the model of your ratex board.

## Features

The software is with features introduced below.

*You can make a change with titles of EXCHANGE RATES, CURRENCY, WE BUY AT, WE SELL AT....*

*Rates edited area.*

*Point to the box and click for rates editing.*



*Open a new file.*

*Open a saved file.*

*Save an edited file.*

*Save an edited file with new file name.*

*Click this button to transmit data to the RateX Board.*

*Set the ComPort, baud rate, lock code and type of Model (described below).*

*Timer setting (described below)*

*Quit the software.*

*Once the necessary parameters are set, they will be shown here on the status bar.*

*You are also allowed to edit Currency column at any time you want. Just simply point to the box and start editing.*

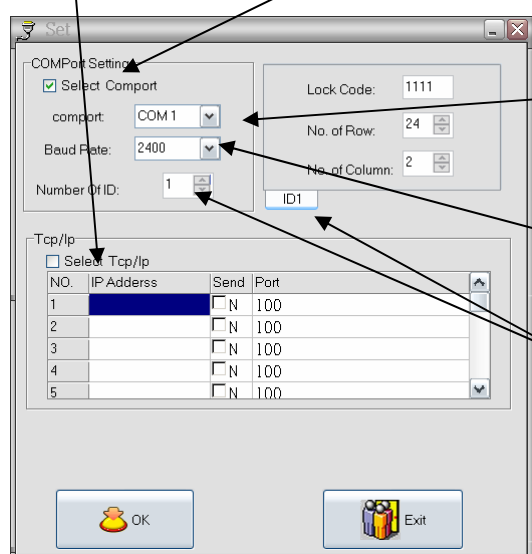
*You can only see 16 rows and 2 columns maximum on the edited screen. Use scroll bar to go further the number of rows in your model exceed 16.*

## Specify with Function Buttons

### Set

When click “Set” function button, the following window will appear for necessary information entering.

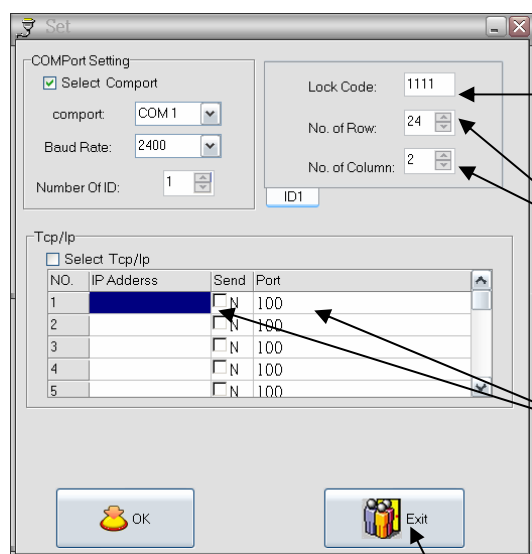
*You can transmit the data either via COMPort directly or TCP/IP Modules. If you transmit the data via TCP/IP, please go further with attached “TCP/IP Converter Operation Supplement”.*



*Drop down box for the selection of Comport, which should be the same as your PC.*

*Drop down box for the selection of baud rate, which should be the same as the one set for your Ratex Board.*

*The number of ID depends on the number of CPU Board inside the Ratex Board. Every CPU Board requires different Lock Code so that you can enter the rates individually. If you set the Number of ID more than 1, be sure to set the different lock code for them also.*



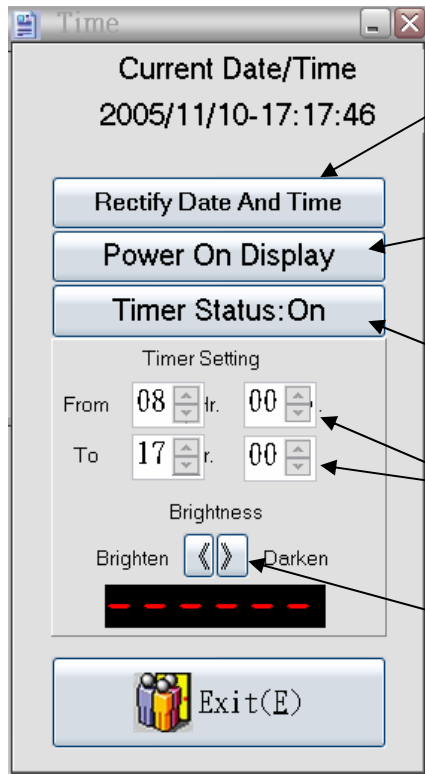
*Entering the lock code, which should be the same as the Ratex Board you are going to send the data to.*

*Entering the No. of row and column according to the format of Ratex (Model No.) For example, Ratex 2426 is formed by 24 rows and 2 columns, so you have to enter 24 for No. of Row and 2 for No. of Column.*

*If the data is going to be transmitted via TCP/IP, the IP address and Port have to be entered according to what you set for the TCP/IP module (see TCP/IP Converter Operation Supplement).*

*Once all the settings are done, click “Exit” to quit the*

## Timer



*Click the button to rectify the current date & time with the Ratex board immediately.*

*When the Ratex Board is on "OFF" status, you can Power it on from PC end immediately by clicking it to "Power On Display" and vice versa.*

*When it clicks to be "On", it will have Ratex Board with timer "On" status immediately and vice versa.*

*Entering the system's activated time based on 24 hours cycle, if you have the display with "Timer On" status.*

*There are six degrees of Brightness for your selection. Use { and } to adjust the brightness. When six short lines are fully lit as "-----", it presents the brightest digits in their brightest tones and vice versa.*

## Flash

To highlight specific items of data (rates), you can enable "flash" function by clicking the right button of mouse when entering with rates and click it again to disable it.