



SPARE PARTS LIST

Household washing machines

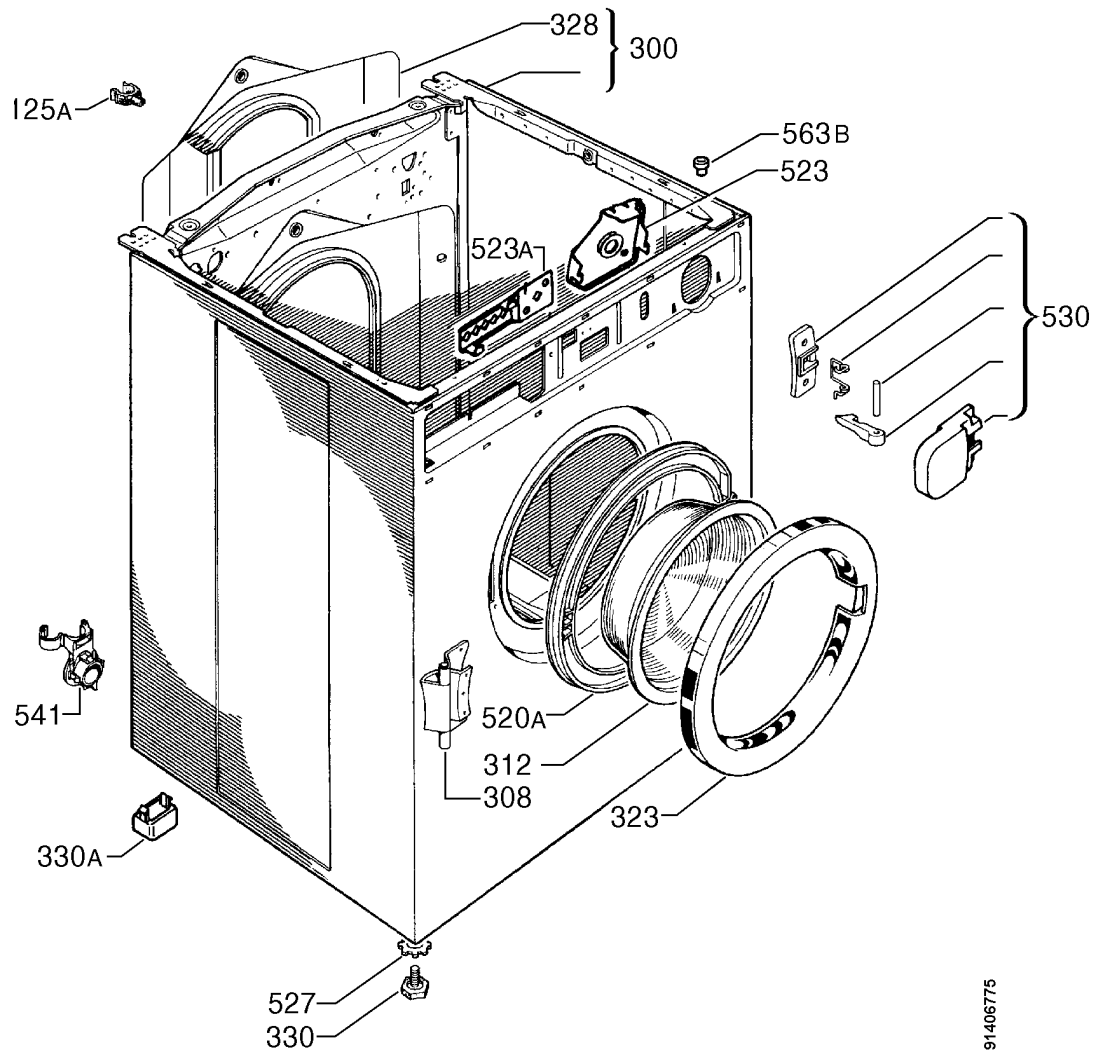
2520

	PNC	Brand	Model	Market
A	914280876	Zanussi	ADVANTAGE800	CZ - PL

AEG Hausgeräte GmbH
Muggenhofer Straße 135
D-90429 Nürnberg
Germany
Fax +49 (0)911 323 1420

Publ.No.
599342380
2000/5/17
ESA

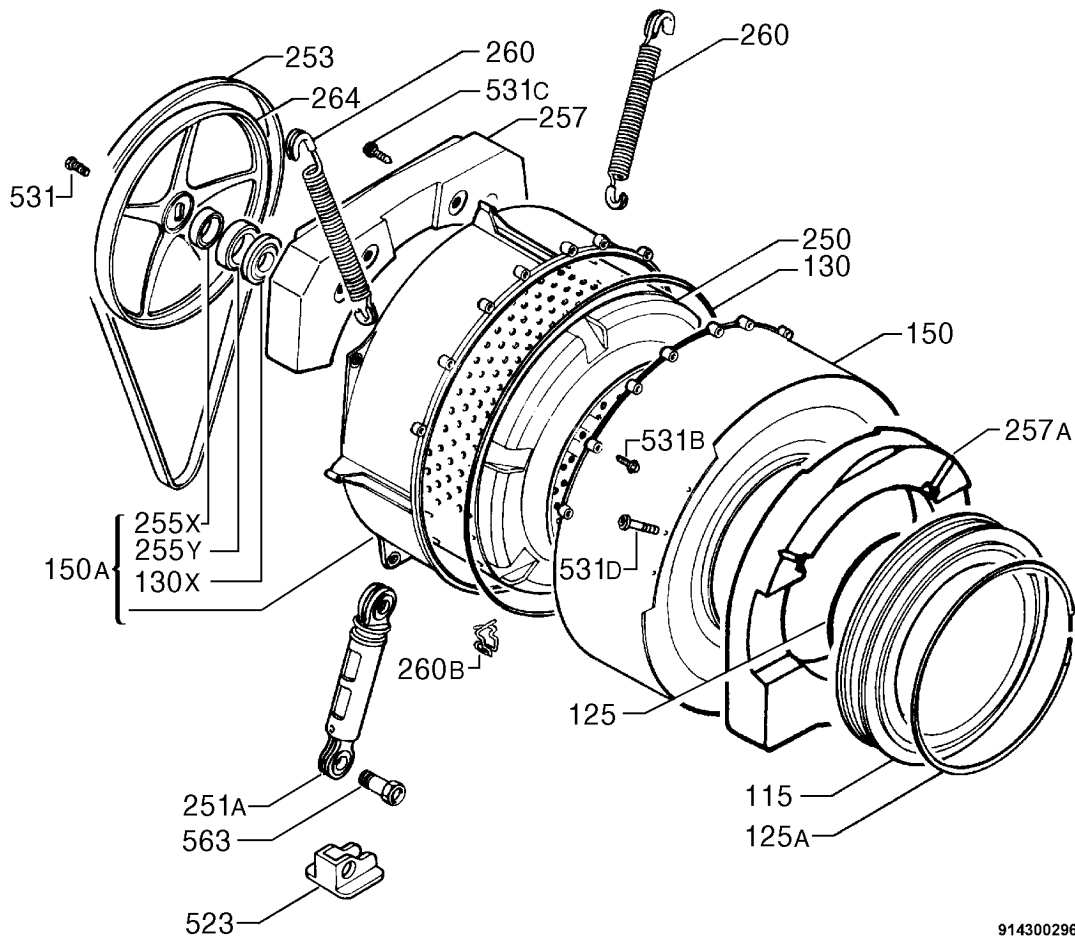
Washing machines,
front-loaded



91406775

A	PNC 914280876	Model ADVANTAGE800
----------	-------------------------	------------------------------

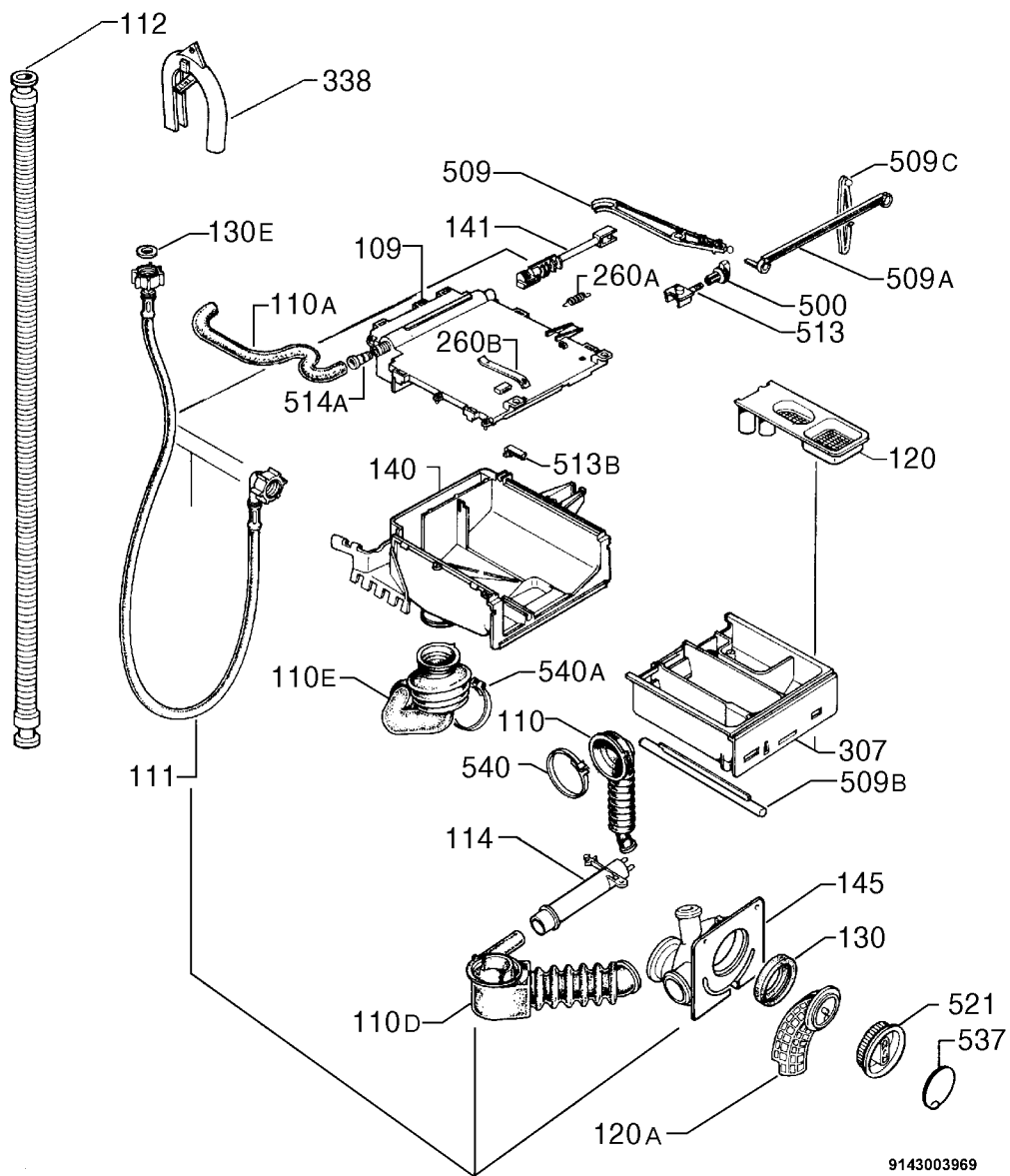
Pos	Part No.		Description
125A	3540 20 580 / 8	A	Ring,piple,drainage
300	3565 31 151 / 5	A	Cabinet
308	3565 10 130 / 4	A	Hinge,bull's eye
312	3426 30 012 / 9	A	porthole
323	3542 10 900 / 8	A	Door frame
328	3415 21 432 / 3	A	cover,behind
330	1260 41 710 / 8	A	Foot,front,adjustable
330A	3540 50 250 / 1	A	Foot,back,fix
520A	3541 20 060 / 0	A	flange,porthole,back
523	1260 42 800 / 6	A	retaining plate,(timer)
523A	1260 42 903 / 8	A	Holder,thermostat,switch
527	1246 21 000 / 7	A	ferrule,lock,Foot
530	50252 55 100 / 2	A	Handle,complet
541	3440 24 284 / 4	A	catch,Drainage hose
563B	3540 20 660 / 8	A	Distance-part,table top
999	3529 26 191 / 3	A	Instruction book,(en-hu-pl-cs)



9143002967

A	PNC 914280876	Model ADVANTAGE800
----------	-------------------------	------------------------------

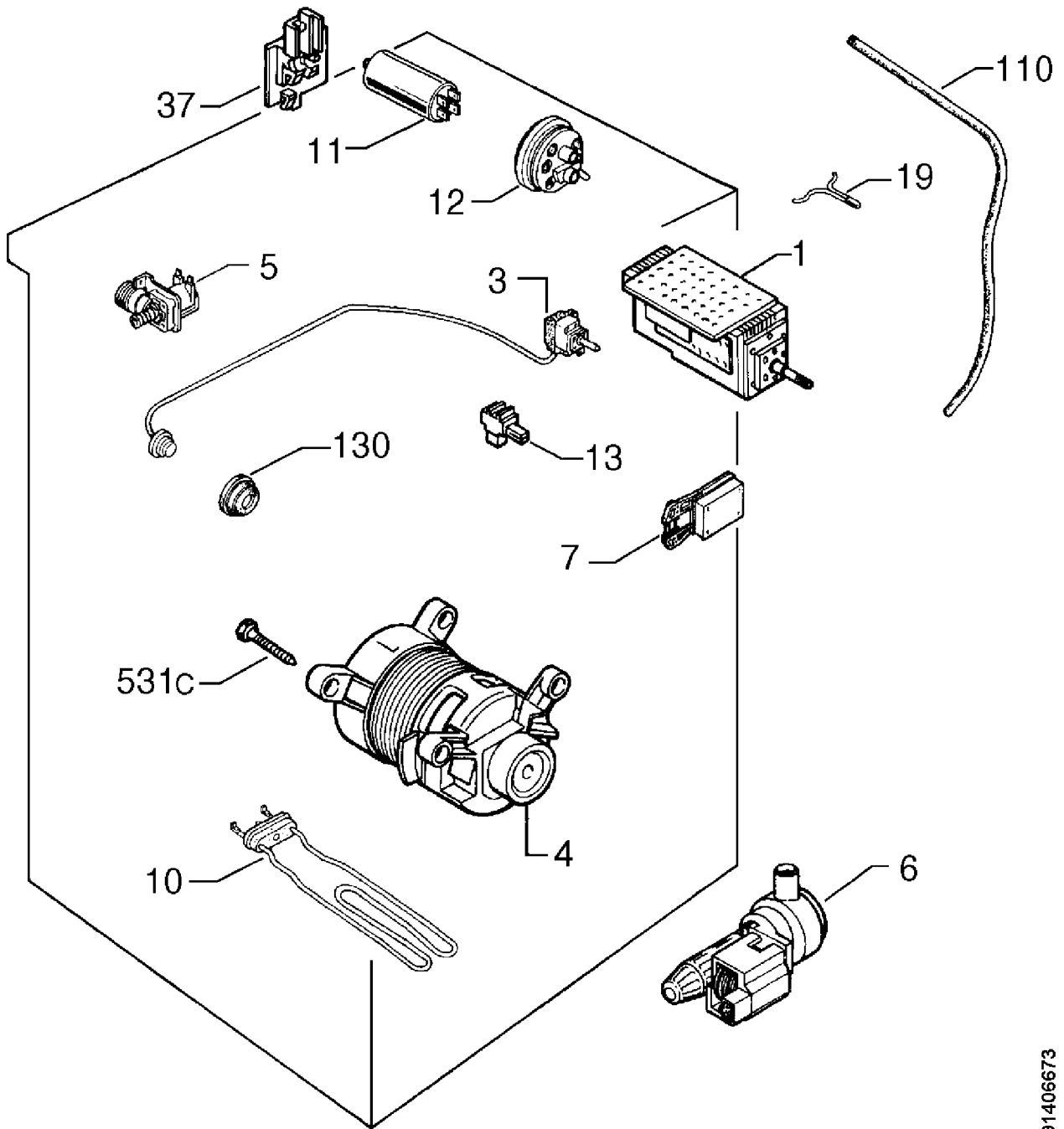
Pos	Part No.		Description
115	1260 41 605 / 0	A	Bellow
125	1260 53 900 / 0	A	lock ring,rubber bellow,tub
125A	50097 07 200 / 8	A	lock ring,rubber bellow,cabinet
130	1240 15 903 / 6	A	gasket,tub
130X	1246 14 900 / 7	A	Shaft packing
150	1260 49 122 / 8	A	tub,front
150A	3567 03 020 / 4	A	assembly,tub,back
250	1260 40 501 / 2	A	Drum
251A	1260 03 850 / 8	A	Shock absorber
253	3588 30 110 / 5	A	Belt
255X	50061 47 900 / 7	A	bearing,back,20x47x14
255Y	50215 93 800 / 7	A	Ball bearing,20x52x15,in front
257	1260 39 920 / 7	A	Yoke,behind
257A	1260 39 820 / 9	A	bob,front
260	1260 49 701 / 9	A	Spring,Tub
260B	1247 82 500 / 1	A	retaining spring,heater
264	1260 39 300 / 2	A	pulley
523	3540 20 720 / 0	A	Bracket,cushion
531	3522 00 810 / 5	A	Screw,bracket,M8x25,pulley
531B	1260 53 300 / 3	A	Screw,lock,tub
531C	3522 00 821 / 2	A	Screw,bracket,behind,yoke
531D	5111 66 846 / 2	A	Screw,bob,front,M6X68 AC10,9 ZN
563	1260 53 400 / 1	A	bolt,cushion
999	1260 39 401 / 8	A	assembly,cross piece,basket



9143003969

PNC	Model
A 914280876	ADVANTAGE800

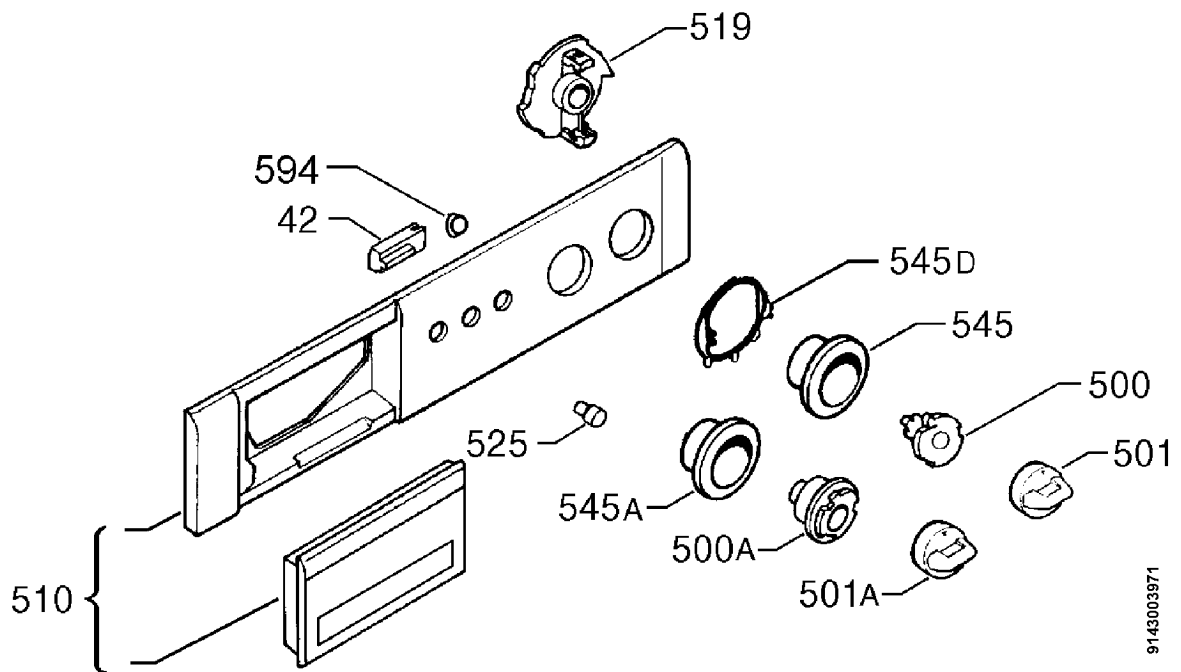
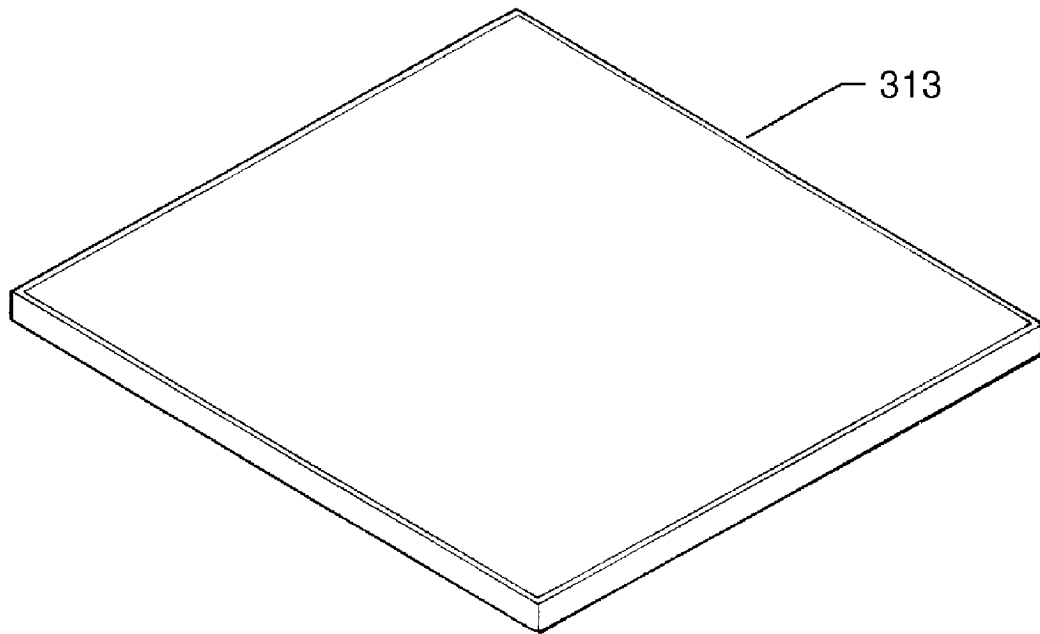
Pos	Part No.		Description
109	3566 10 250 / 9	A	Cover,conveyor,water,3SC. A/F
110	3548 30 090 / 8	A	Pipe,recirculation
110A	3548 40 400 / 7	A	Hose,electric valve,Container cup,L=420
110D	3548 30 120 / 3	A	Draining hose
110E	3548 30 200 / 3	A	Pipe
111	1260 48 800 / 0	A	Input hose
112	3566 80 160 / 5	A	Emptying hose
114	1260 50 001 / 0	A	bell,air chamber
120	3541 10 400 / 0	A	filter,drawer,detergent,3SC.
120A	3541 10 420 / 8	A	filter
130	3549 10 250 / 1	A	sieve seal
130E	50651 83 900 / 8	A	Sealing,Input hose
140	3541 00 400 / 2	A	Container cup,detergent,3SC.
141	3543 00 500 / 7	A	piston,water distributor
145	3541 10 450 / 5	A	filter body
260A	3522 40 310 / 8	A	Spring,Connecting rod
260B	3522 40 380 / 1	A	Spring,catch,detergent drawer
307	3541 00 430 / 9	A	detergent drawer,3SC
338	1260 43 100 / 0	A	Support,piple
500	3540 50 260 / 0	A	Knob,adjustable,piston
509	3543 00 540 / 3	A	Lever
509A	3543 00 530 / 4	A	Bar
509B	3540 40 020 / 1	A	guidance,detergent drawer
509C	3543 00 420 / 8	A	lever,piston
513	3540 20 700 / 2	A	bolt,Controller,piston
513B	3540 20 710 / 1	A	brake,detergent drawer
514A	3540 20 740 / 8	A	Bush,Container cup,detergent
521	3540 20 830 / 7	A	Bung,closure,filter
537	3540 10 060 / 3	A	Disk,lid,filter
540	5390 86 004 / 6	A	tube clip,circulation
540A	3540 60 310 / 1	A	Bell



91406673

A	PNC 914280876	Model ADVANTAGE800
----------	-------------------------	------------------------------

Pos	Part No.		Description
001	1249 21 402 / 2	A	Timer,VD51/53 AKO (0/I)
003	3588 30 360 / 6	A	Thermostat,adjustable
004	1247 01 000 / 0	A	commutator motor
005	3588 30 520 / 5	A	Electro-valve
006	3588 30 560 / 1	A	drain pump
007	3588 30 160 / 0	A	Switch door
010	3588 30 370 / 5	A	heater
011	3561 83 150 / 8	A	Capacitor
012	3588 30 381 / 2	A	Push-button switch,2N+1T,145mm
013	1249 27 100 / 6	A	Calipers
019	3567 55 510 / 1	A	Pilot light
037	1253 05 513 / 9	A	Terminal board
110	3548 40 440 / 3	A	Pipe
130	1260 53 800 / 2	A	gasket,temperature regulator
531C	1240 22 200 / 8	A	Screw,main motor,bob
999	3561 07 652 / 6	A	harness,main

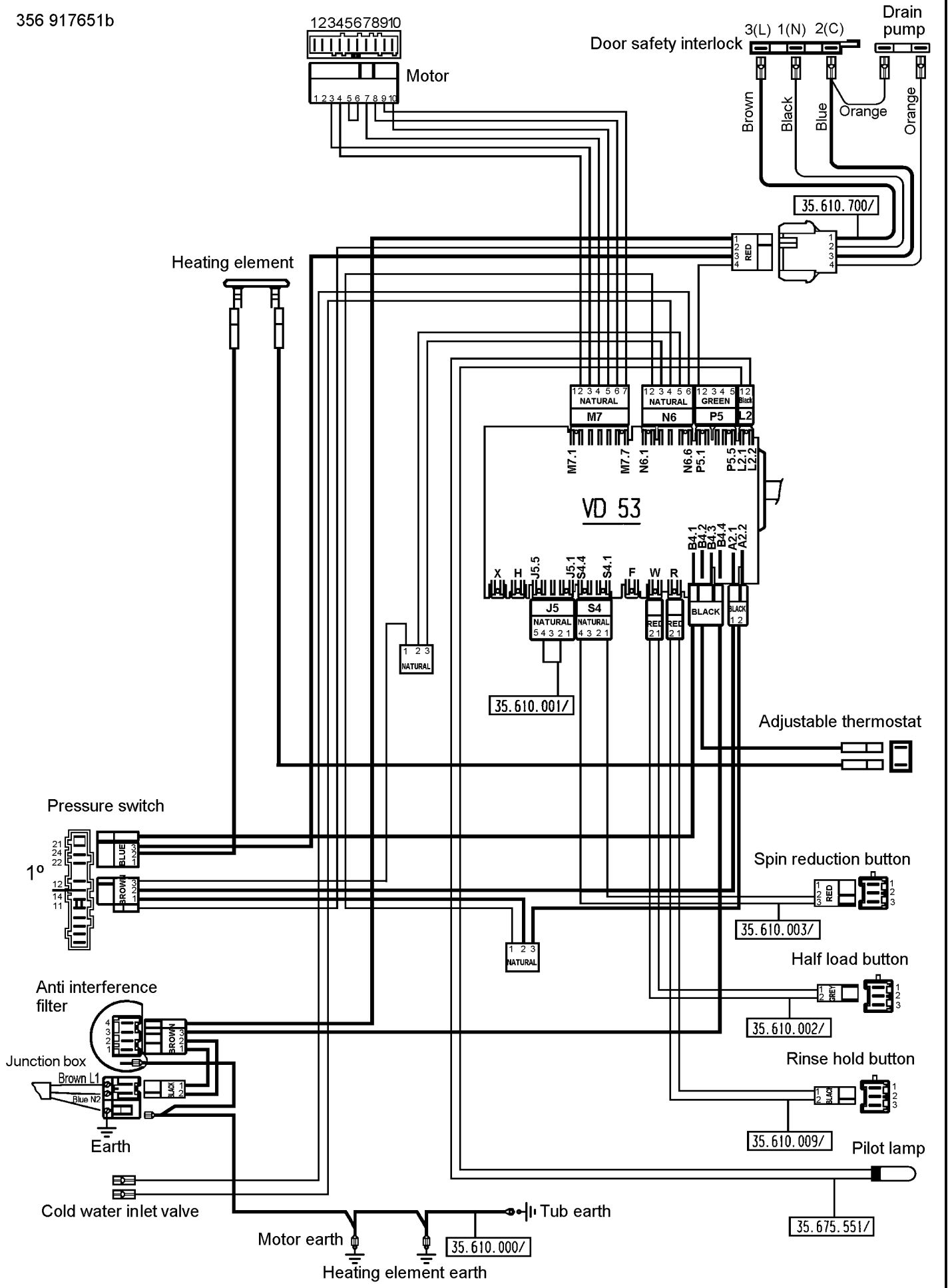


9143003971

A	PNC 914280876	Model ADVANTAGE800
----------	-------------------------	------------------------------

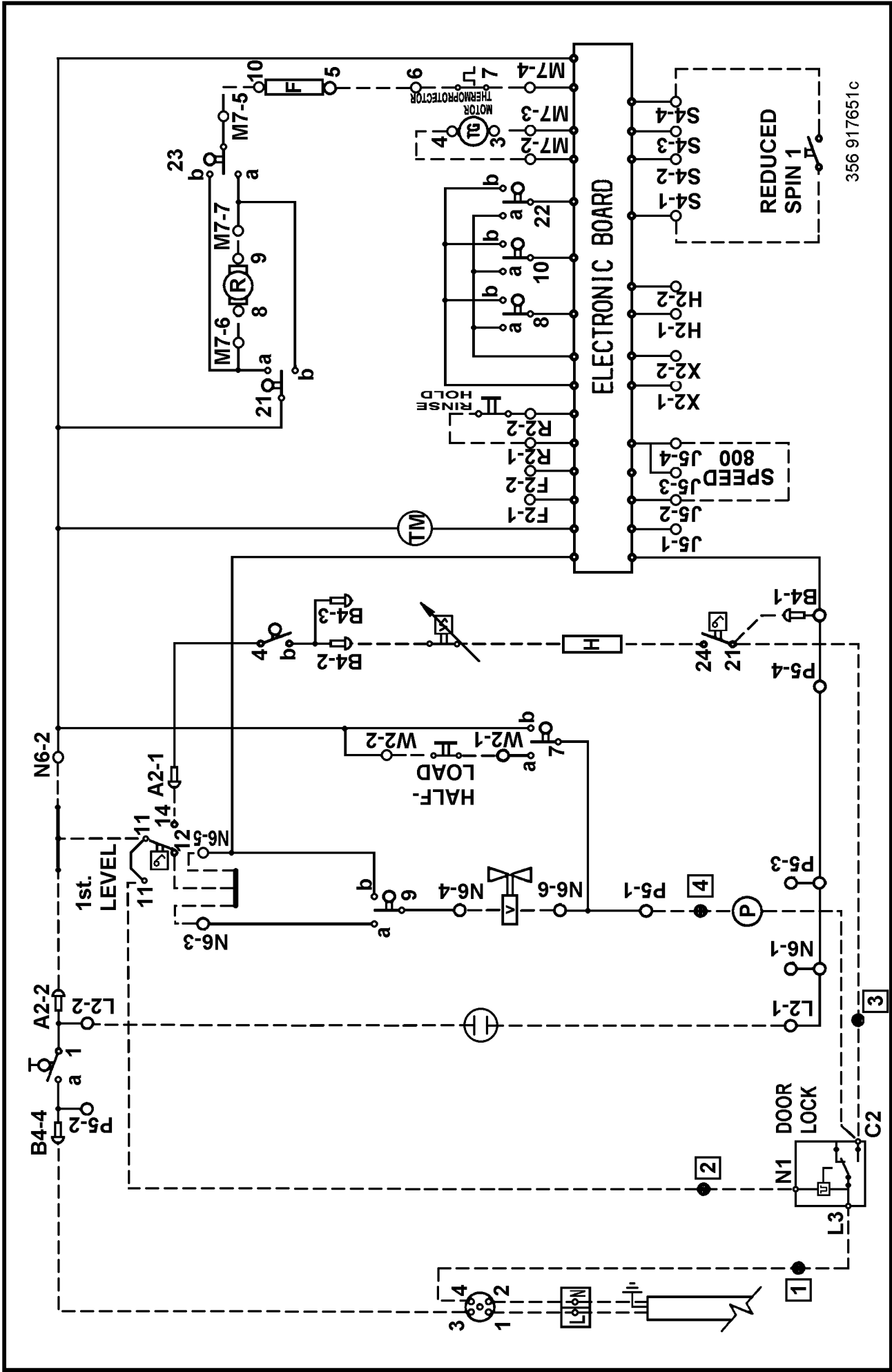
Pos	Part No.		Description
042	1260 49 800 / 9	A	LAMP SOCKET
313	3565 40 470 / 8	A	work top
500	1260 46 811 / 9	A	DRIVER
500A	1260 46 912 / 5	A	Knob thermostat
501	1260 46 501 / 6	A	Knob cap
501A	1260 46 601 / 4	A	Lid,knob thermostat
510	3567 65 480 / 5	A	Control panel,Handle,silkscreened
519	1260 48 911 / 5	A	cam
525	1260 46 400 / 1	A	Push button,keyboard
545	3542 54 920 / 3	A	cycle indicator,Timer,silkscreened
545A	3542 54 930 / 2	A	dial,temperature,silkscreened
545D	1260 49 500 / 5	A	Styredel
594	1260 46 700 / 4	A	LENS

356 917651b



POESA30000028

Door safety interlok	Door safety interlok
Drain pump	Drain pump
Adjustable thermostat	Adjustable thermostat
Spin reduction button	Spin reduction button
Half load button	Half load button
Rinse-hold button	Rinse-hold button
Pilot lamp	Pilot lamp
Tub earth	Tub earth
Heating element earth	Heating element earth
Motor earth	Motor earth
Cold water inlet valve	Cold water inlet valve
Earth	Earth
Anti-interference filter	Anti-interference filter
Pressure switch	Pressure switch
Heating elements	Heating elements
Motor	Motor
Junction box	Junction box
Brown	Brown
Black	Black
Blue	Blue
Orange	Orange



356 917651c

