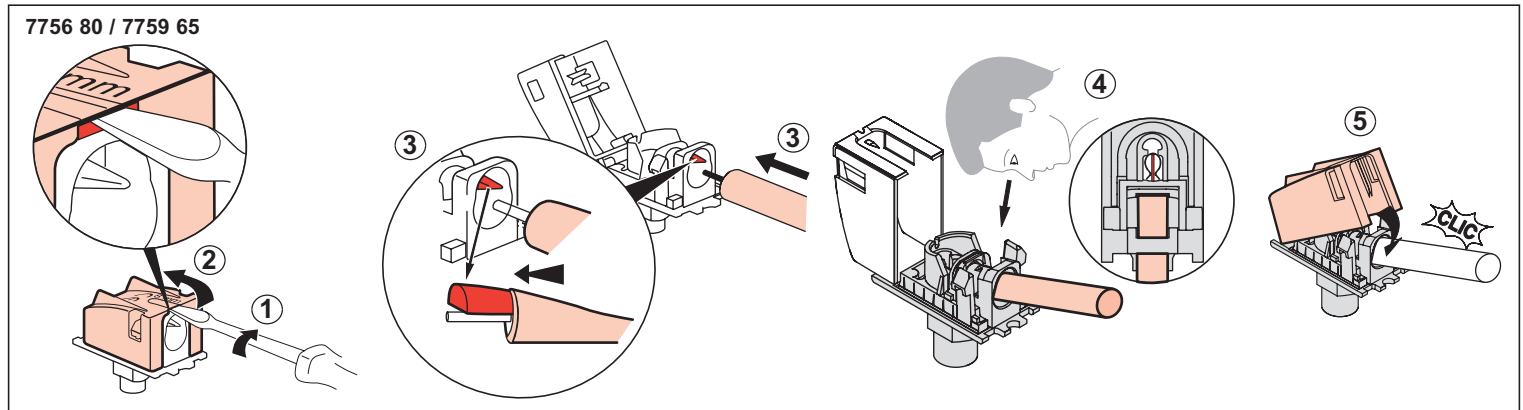
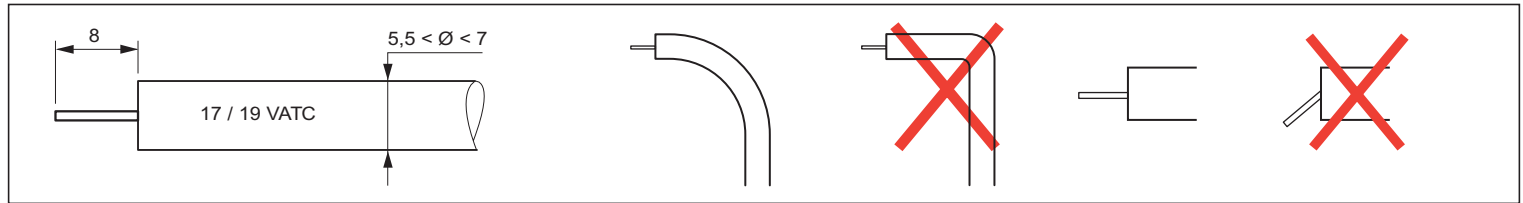


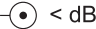
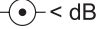
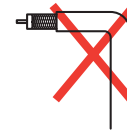
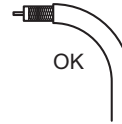
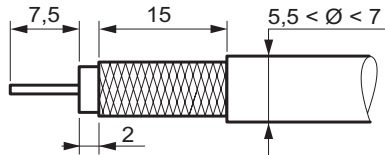


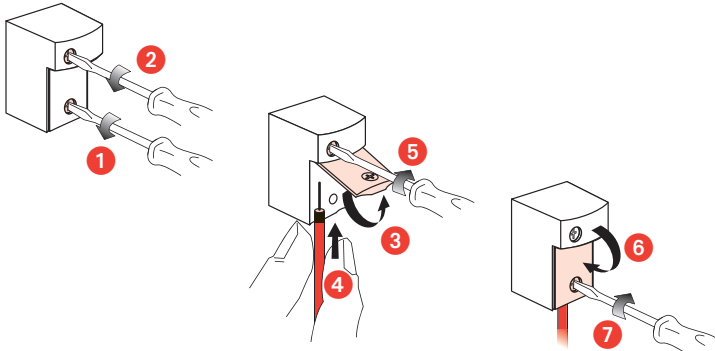
<p>7759 65</p>	Coax	Attenuation		Control	Return path	Channel 1	Channel FM	Channel VHF	Channel UHF	Channel SAT
	Z = 75 Ω		500 mA							
<p>7756 80</p>			—	22 / 0,6	4 – 30	47 – 68	87,5 – 108	120 – 470	470 – 862	950 – 2400
		dB	mA	KHz / V	MHz	MHz	MHz	MHz	MHz	MHz
	 	i < 1,5 dB								



	Coax	Attenuation		Control	Return Path	Channel 1	Channel FM	Channel VHF	Channel UHF	Channel SAT
	Z = 75 Ω		500 mA							
			—	22 / 0,6	4 – 30	47 – 68	87,5 – 108	120 – 470	470 – 862	950 – 2150
		dB	mA	KHz / V	MHz	MHz	MHz	MHz	MHz	MHz
7759 66	TV	 < dB i = 10 dB								
7759 67		 < dB i = 14 dB								



7759 66



7759 67

