

Box Properties

--Description--

Name:

Type: Vented Box

Shape: Prism, slanted front

--Box Parameters--

Vb = 40, liters

V(total) = 45,15 liters

Fb = 50, Hz

QL = 7,

F3 = 43,7 Hz

Fill = none

--Vents--

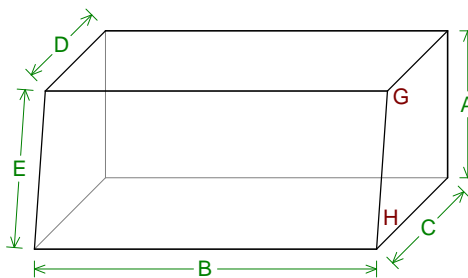
No. of Vents = 2

Vent shape = round

Vent ends = one flush

Dv = 66, mm

Lv = 143,9 mm



--External Dimensions--

A = 316, mm

B = 736, mm

C = 288,7 mm

D = 244,4 mm

E = 319,2 mm

--Internal Dimensions--

A = 280, mm

B = 700, mm

C = 250, mm

D = 210,7 mm

E = 282,7 mm

--Wall Thickness--

Front = 18, mm

Side = 18, mm

--Angles--

G = 97,98°

H = 82,02°

Driver Properties

--Description--

Name: AXX 1010

Type: Standard one-way driver

Company: Raveland

--Configuration--

No. of Drivers = 2

Mounting = Standard

Wiring = Series

Drivers sum coherently = Yes

--Mechanical Parameters--

Fs = 36, Hz

Qms = 4,65

Vas = 21,8 liters [43,6]

Cms = 0,138 mm/N [0,069]

Mms = 141,2 g [282,4]

Rms = 6,868 kg/s [13,74]

Xmax = 9, mm

Xmech = 13,5 mm

P-Dia = 205,9 mm [291,2]

Sd = 333, sq.cm [666,]

P-Vd = 0,3 liters [0,6]

--Electrical Parameters--

Qes = 0,37

Re = 3,2 ohms [6,4]

Z = 3,84 ohms [7,68]

BL = 16,62 Tm [33,24]

Pe = 200, watts [400,]

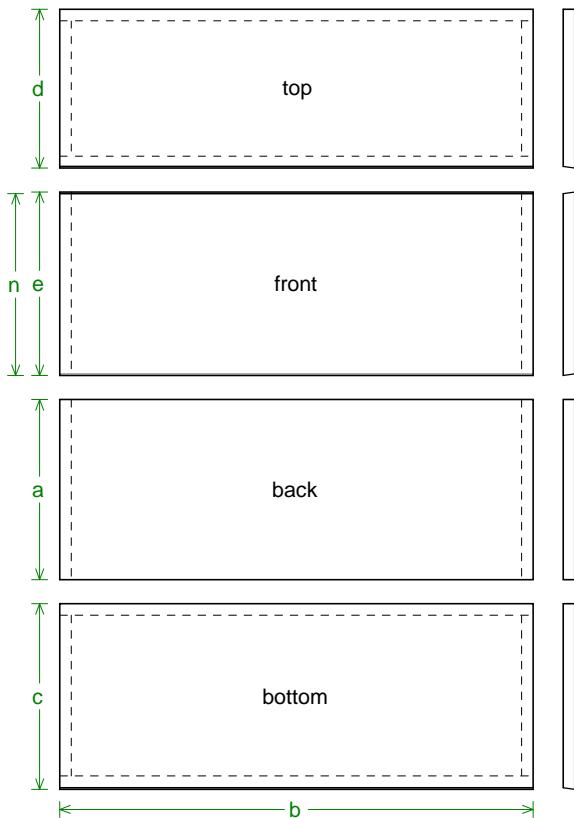
--Electromech. Parameters--

Qts = 0,34

no = 0,265 % [0,53]

1-W SPL = 86,38 dB [89,39]

2.83-V SPL = 90,36 dB [90,36]



Box Parts

Box Shape: Slanted Front Prism

- 1 Top: height (d) = 246,9 mm
width (b) = 736, mm
thickness = 18, mm
cut angle (front edge only) = 7,982°
- 1 Front: total height (e) = 285,3 mm
exposed surface height (n) = 282,7 mm
width (b) = 736,, thickness = 18, mm
top/bottom cut angles = ± 7,982°
- 1 Back: height (a) = 280, mm
width (b) = 736,, thickness = 18, mm
- 1 Bottom: height (c) = 288,7 mm
width (b) = 736,, thickness = 18, mm
cut angle (front edge only) = 7,982°
- 2 Sides: top depth (k) = 210,7 mm
height (a) = 280, mm
bottom depth (m) = 250, mm
front length (n) = 282,7 mm
thickness = 18, mm
Angle g = 97,98°, Angle h = 82,02°

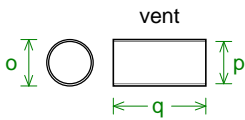
--Driver Mounting--

Mounting: Flush

Aim: All drivers face same direction

--Vent Parts--

- 2 Ducts: outside diameter (o) = 72,35 mm
inside diameter (p) = 66, mm
length (q) = 143,9 mm



Wiring Diagram

