

Component Placing, Electrical

Applicable for K320 and W200i

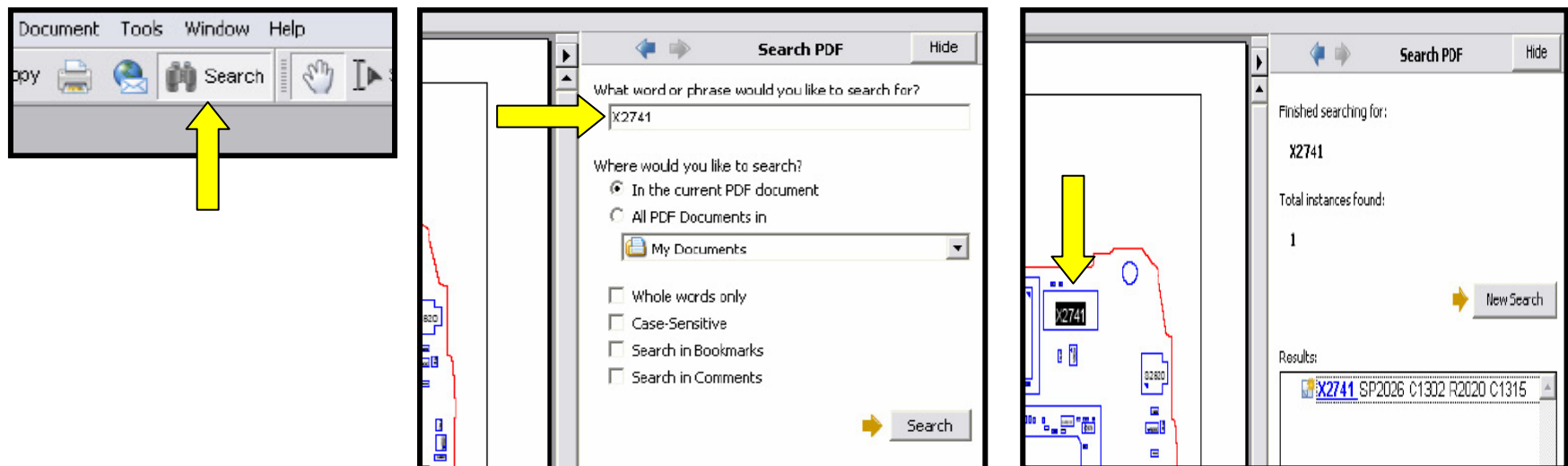
Contents

1	Mounting drawing table.....	2
2	Mounting drawing ODM900-50201153	3
3	Mounting drawing ODM650-50162550	6
4	Mounting drawing W200i, HW3101 (900MHz).....	8
5	Mounting drawing W200i, HW3151 (850MHz).....	11
6	Mounting drawing W200i Keyboard 20	14
7	Revision history	16

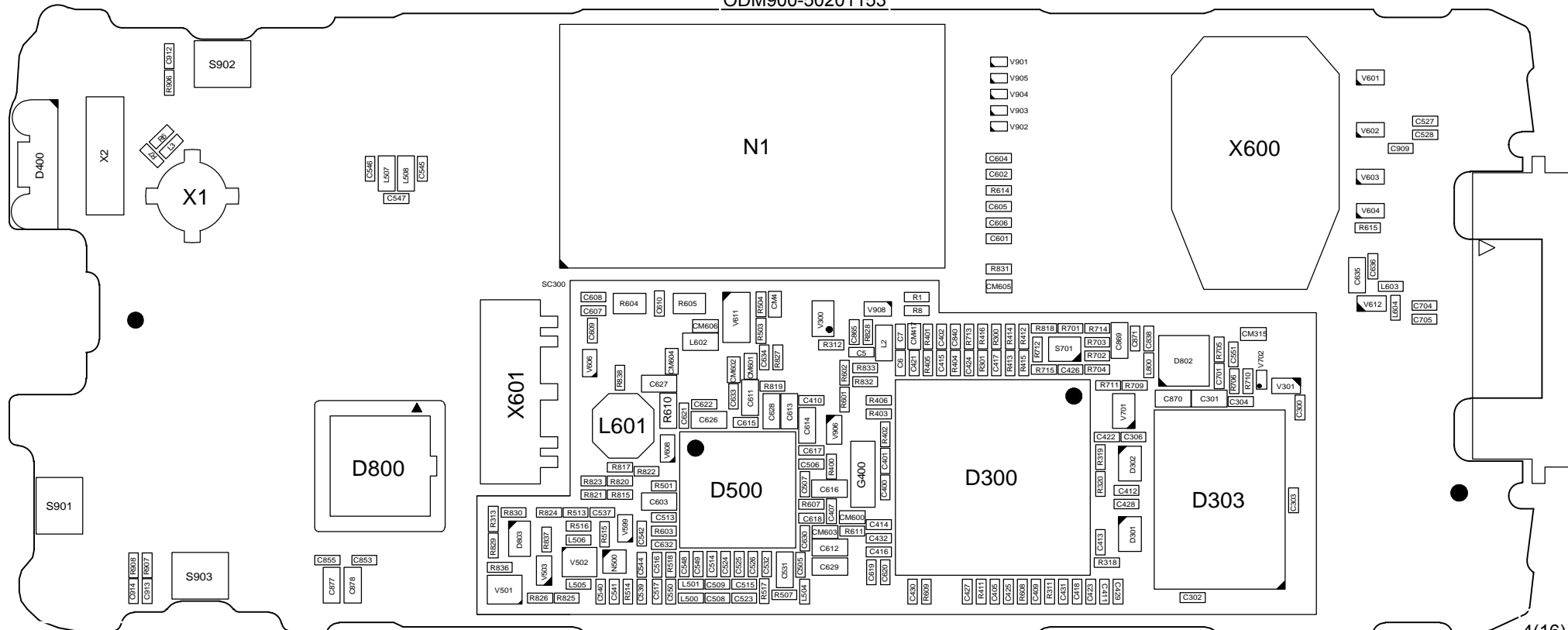
1 Mounting drawing table

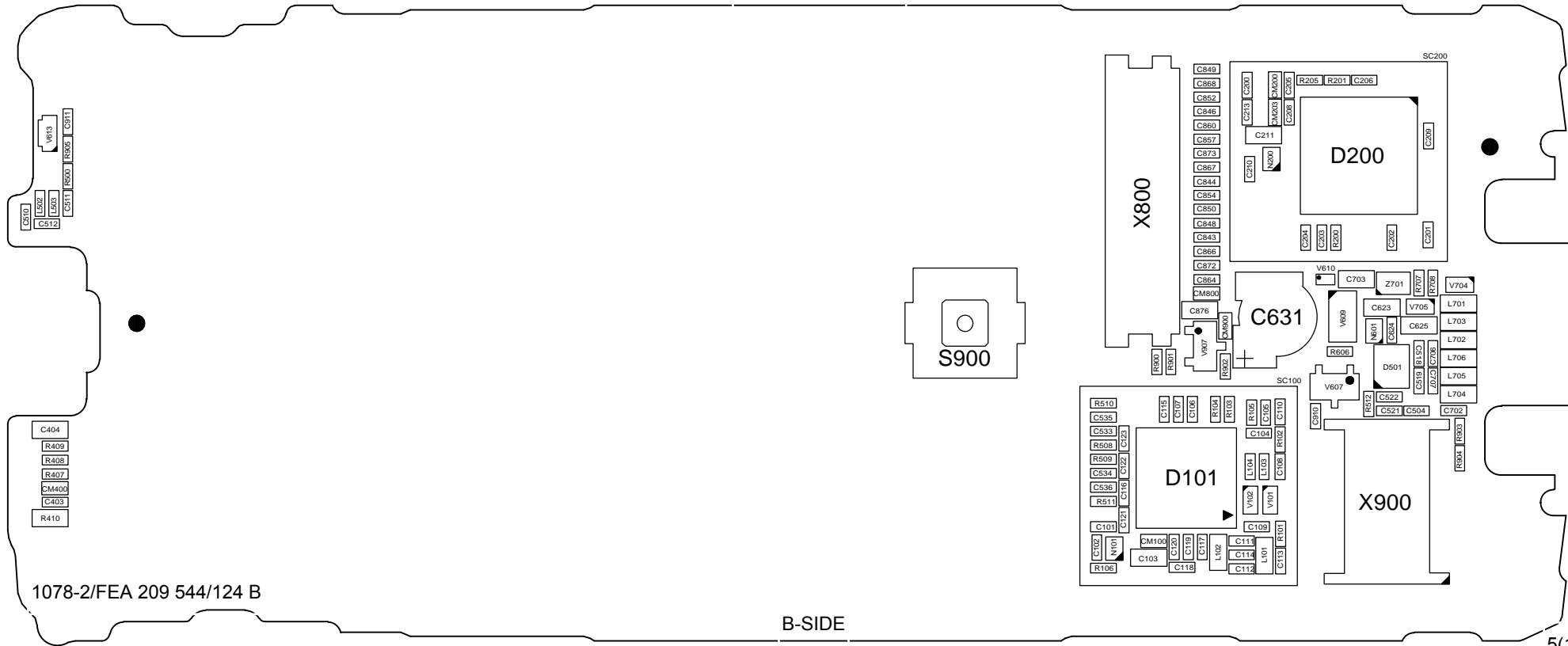
Board Number	Drawing	Comments
ODM900-50201153 (K320)	E3002_006_asmb_value_testpoints 01mar_2006.pdf	Main board
ODM650-50162550 (K320)	28_asmb_29dec2005.pdf	UI Board
Melinda HW3101 (W200i, 900MHz)	Melinda_Engine_3101_asmb_value _testp_05dec2006.pdf	Main Board
Melinda HW3151 (W200i, 850MHz)	Melinda_Engine_3151_asmb_value _testp_05dec2006.pdf	Main Board
Melinda Keyboard 20	Melinda_Keyboard_2001_asmb_va lue_28aug2006.pdf	UI-Board

By using the “Search” function and enter the component name you can find the position of the component.
You can see the component name “highlighted” on the circuit board (use zoom to enlarge).

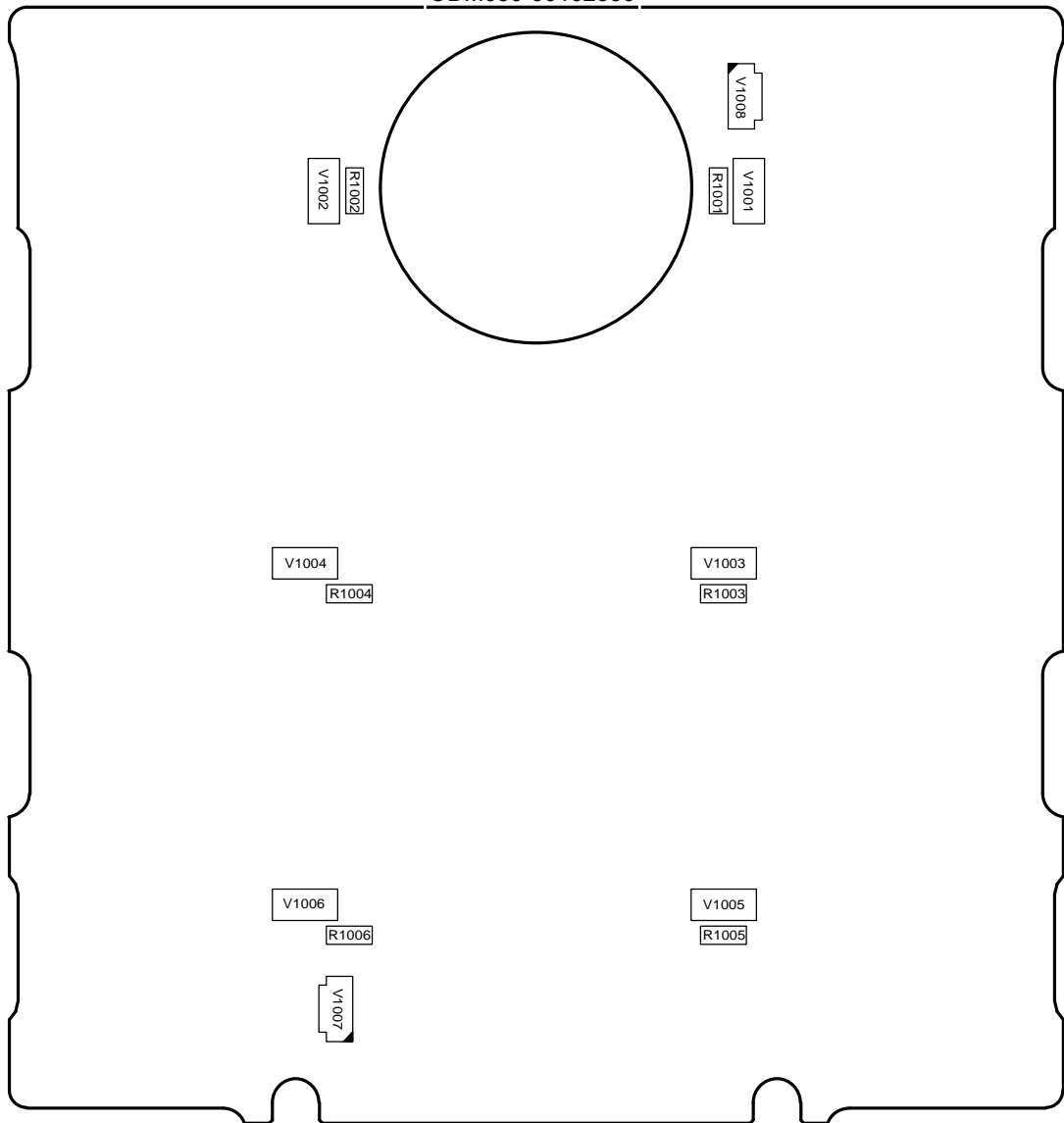


2 Mounting drawing ODM900-50201153

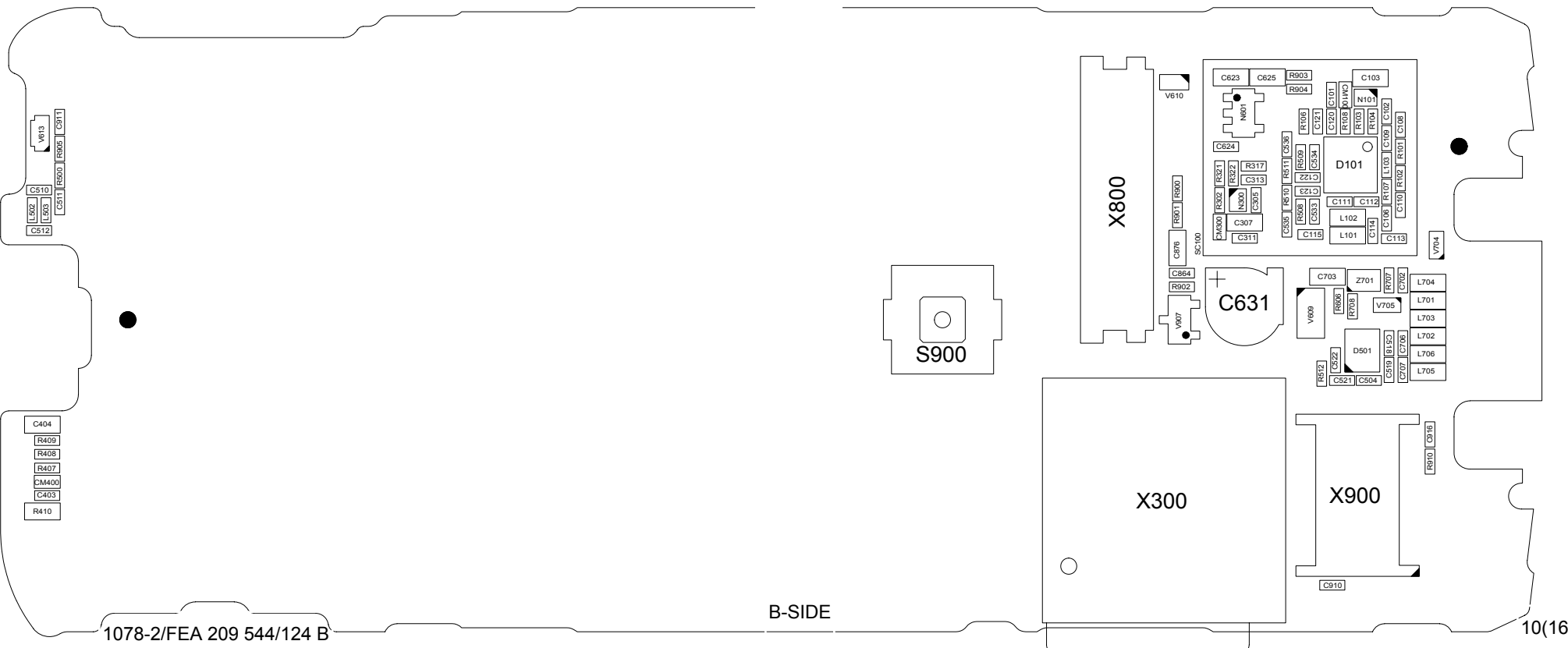




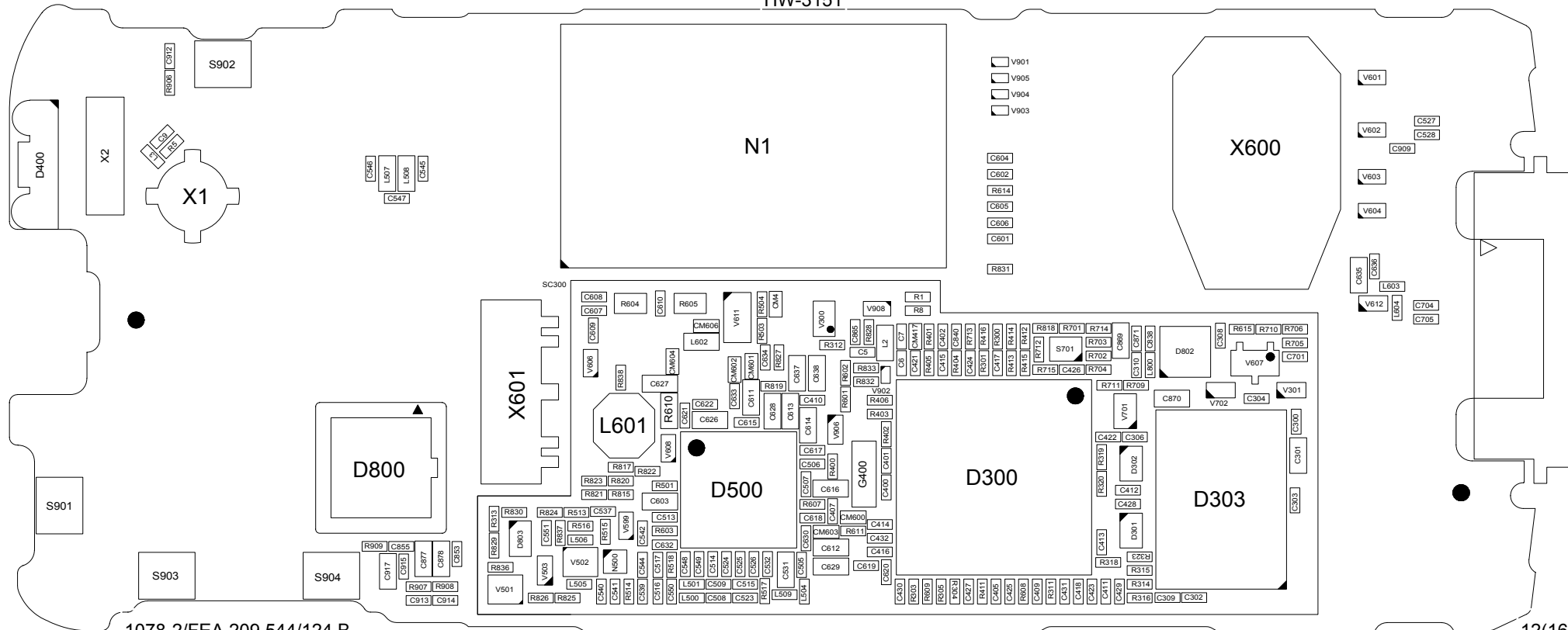
3 Mounting drawing ODM650-50162550

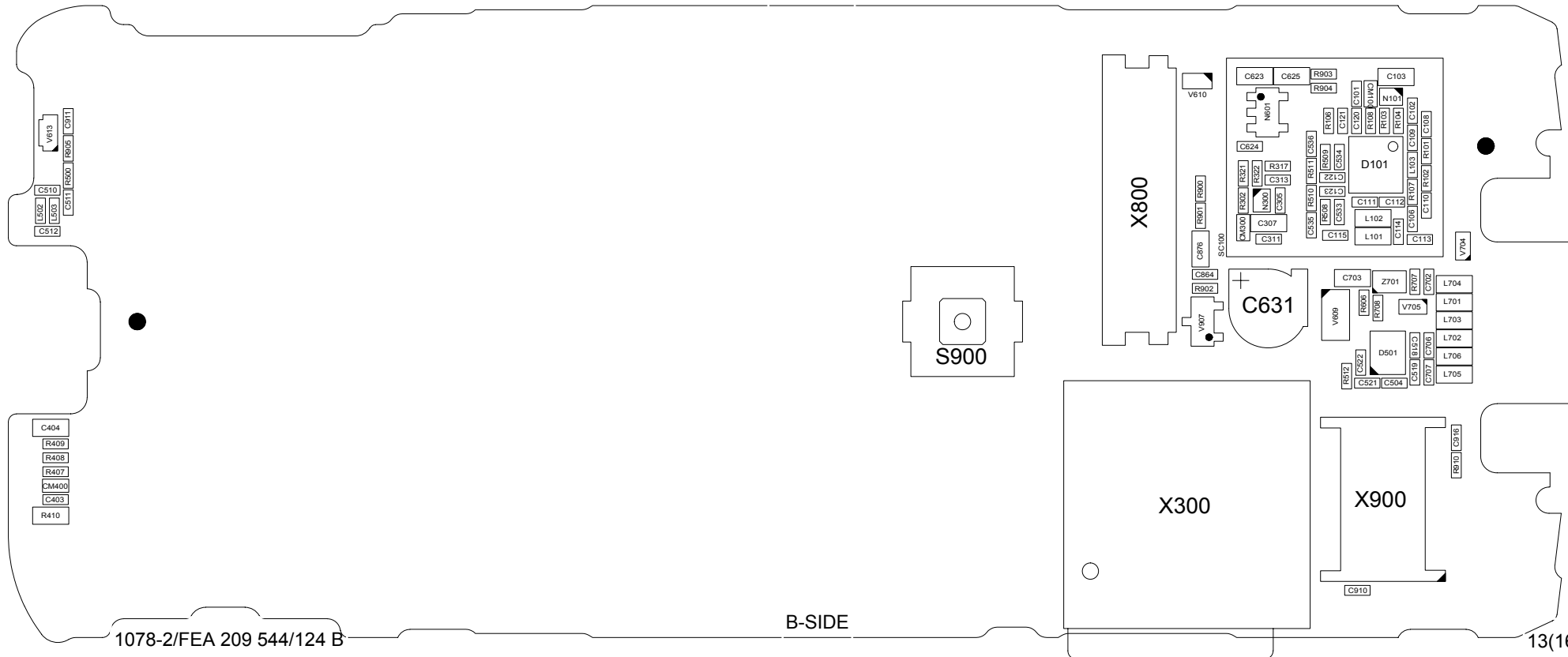


4 Mounting drawing W200i, HW3101 (900MHz)



5 Mounting drawing W200i, HW3151 (850MHz)





6 Mounting drawing W200i Keyboard 20

V1002
R1002

V1001
R1001

V1008

V1004
R1004

V1003
R1003

V1006
R1006

V1005
R1005

V1007

7 Revision history

rev.	date	Changes / Comments
A	2006-10-16	First draft.
B	2006-12-22	W200i phone added.