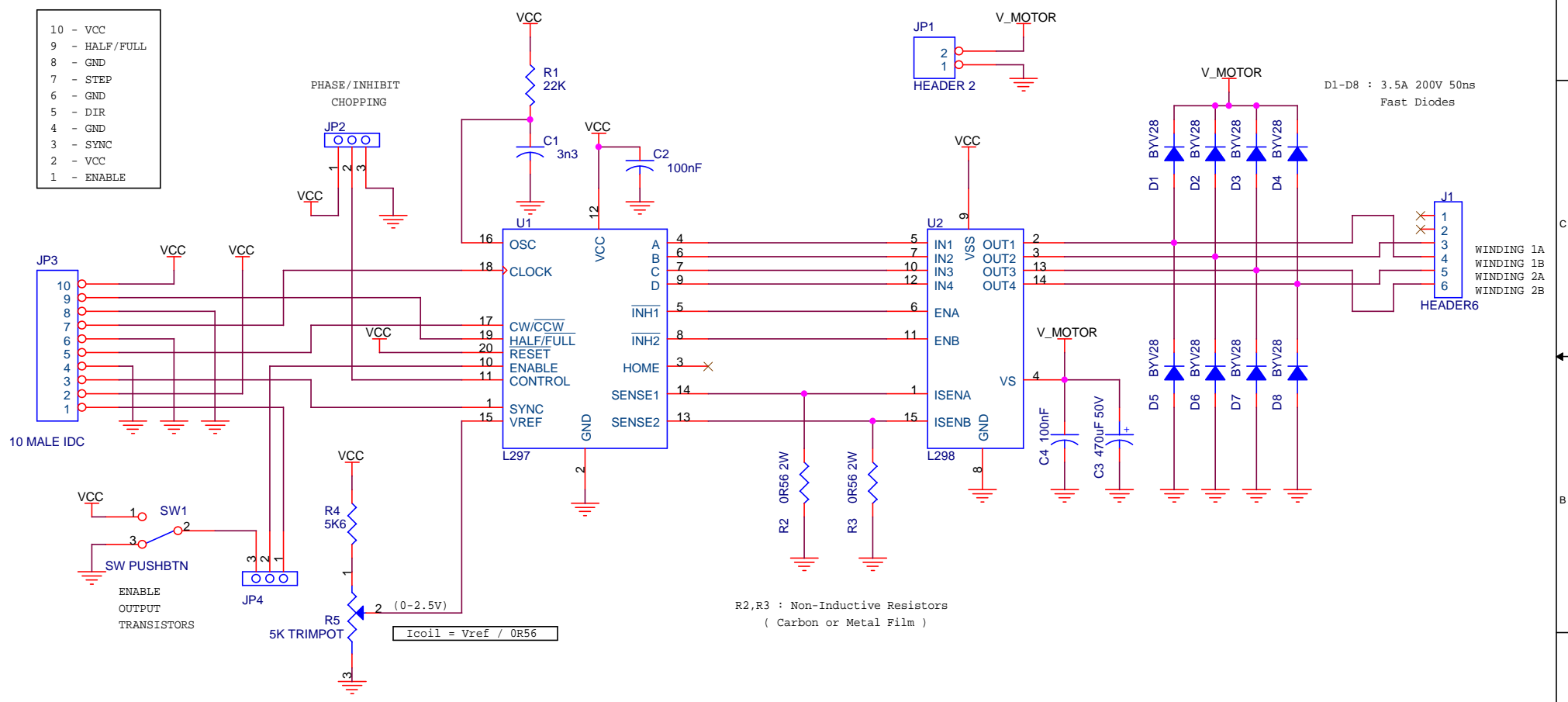


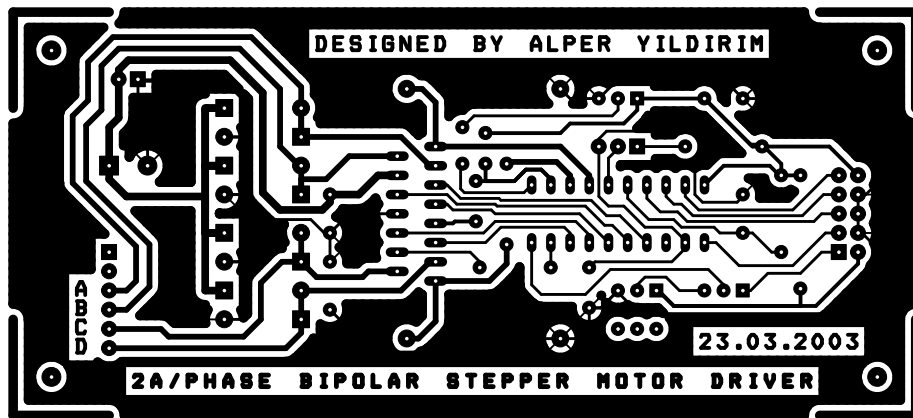
- 10 - VCC
- 9 - HALF/FULL
- 8 - GND
- 7 - STEP
- 6 - GND
- 5 - DIR
- 4 - GND
- 3 - SYNC
- 2 - VCC
- 1 - ENABLE

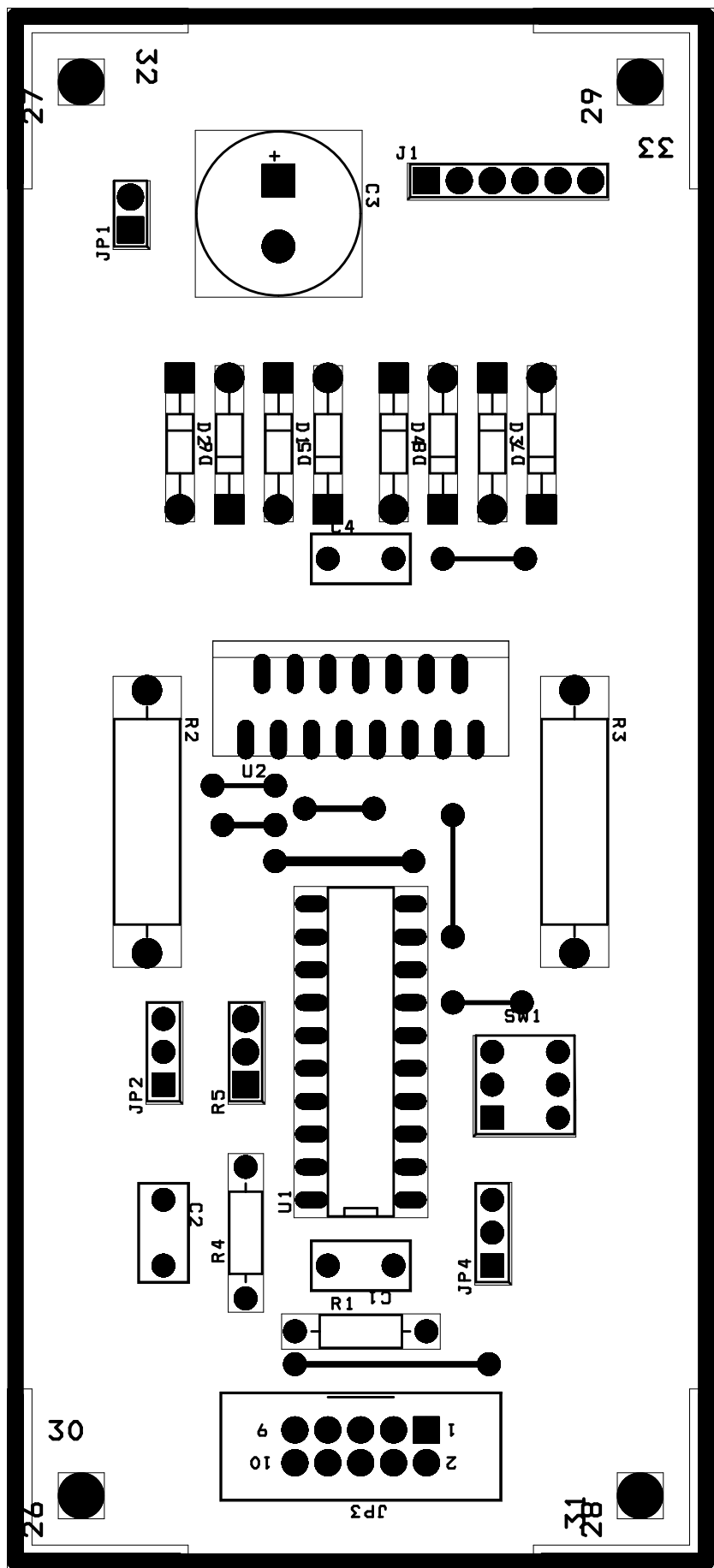


R2,R3 : Non-Inductive Resistors
(Carbon or Metal Film)

$$I_{coil} = V_{ref} / 0R56$$

Title		
2A/Phase Bipolar Stepper Motor Driver		
Size	Document Number	Rev
A4	DESIGNED BY ALPER YILDIRIM	D
Date:	Friday, March 21, 2003	Sheet 1 of 1





27

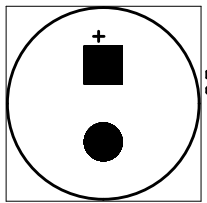
26

30

32

33

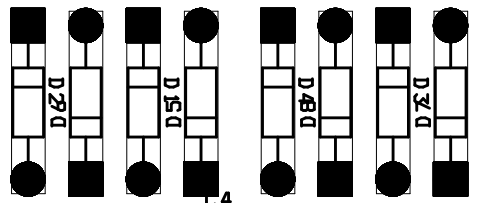
JP1



J1

29

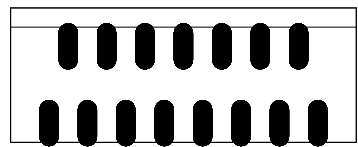
33



4



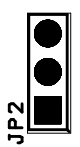
R2



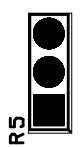
U2



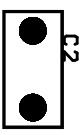
R3



JP2



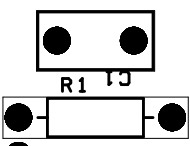
R5



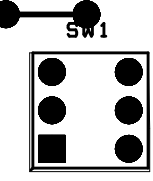
R4



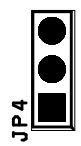
U1



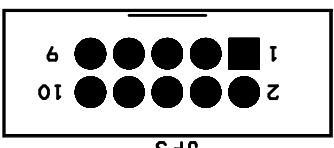
R1



SW1



JP4



JP3

31

32

Bill Of Materials April 3,2003 0:32:15 Page1

Item	Quantity	Reference	Part
1	1	C1	3n3
2	2	C4,C2	100nF
3	1	C3	470uF 50V
4	8	D1,D2,D3,D4,D5,D6,D7,D8	BYV28
5	1	JP1	HEADER 2
6	2	JP2,JP4	JUMPER3lü
7	1	JP3	10 MALE IDC
8	1	J1	HEADER6
9	1	R1	22K
10	2	R2,R3	0R56 2W
11	1	R4	5K6
12	1	R5	5K TRIMPOT
13	1	SW1	SW PUSHBTN
14	1	U1	L297
15	1	U2	L298